

SM 7085

2

S 5685

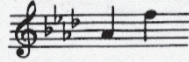
# O Lord Most Holy

*Panis Angelicus*

from "Messe Solennelle"

Solo for general use  
Alternate text for communion

High Voice



CÉSAR FRANCK

Arranged by Charles P. Scott

Andante con moto

Piano or Organ

*mp*

*p calmato*

O Lord most ho - ly, O Lord most ho - ly,  
 (Communion) Bread of ho - ly heav - en, From God to mor - tals giv'n,  
 Pa - nis an - gel - i - cus fit pa - nis ho - mi - num

*p a tempo*

\*) Prelude may be shortened by omitting ♠ to ♠  
Also published as an anthem for duet and mixed voices, Carl Fischer Choir Ed. No. 222

*mf*

O lov - ing Fa - ther, Thee would we be prais - ing al - way  
 Fill the hun - gry souls of men, — Strength - en and re - vive a - gain,  
*Dat pa - nis coe - li - cus fi - gu - ris ter - mi - num:*

*f*

Help us to know Thee, Know Thee and love — Thee,  
 O most mi - rac - u - lous, Thou dost come down to us,  
 O res mi - ra - bi - lis! Man - du - cat Do - mi - num

*p*

Fa - ther, Fa - ther, Grant us Thy truth and grace  
 Low - ly, low - ly Though we Thy ser - vants be,  
*Pau - per, pau - per, ser - vus, et hu - mi - lis,*

*p* *marcato*

Fa - ther, Fa - ther guide and de - fend — us. —  
 Low - ly, low - ly Though we Thy ser - vants be. —  
*Pau - per, pau - per, ser - vus, et hu - mi - lis.*

*espress.*

The first system shows the piano introduction. It consists of a treble and bass clef staff. The treble clef staff has a whole rest in the first measure, followed by a series of eighth and sixteenth notes in the second and third measures, and a half note in the fourth measure. The bass clef staff has a half note in the first measure, followed by a series of eighth and sixteenth notes in the second and third measures, and a half note in the fourth measure. The key signature is two flats (B-flat and E-flat), and the time signature is 2/4.

*p*

Rule Thou our wil-ful hearts, Keep Thee our wan-d'ring thought,  
 Bread that the an-gels ken, Now is the bread of men,  
*Te tri - na De - i - tas u - na - que po - sci - mus,*

*legato*

*p f*

The second system contains the first vocal entry. The vocal line is in the treble clef, starting with a half note 'Rule' and a quarter note 'Thou'. The piano accompaniment is in the grand staff, with the right hand playing a series of eighth notes and the left hand playing a series of eighth notes. The key signature is two flats, and the time signature is 2/4.

*f*

In all our sor - rows, let us find our rest in Thee:  
 Bread that the heav - ens send Makes all our sor - rows end.  
*Sic nos tu vi - si - ta, si - cut te co - li - mus:*

*mf*

The third system contains the second vocal entry. The vocal line is in the treble clef, starting with a half note 'In' and a quarter note 'all'. The piano accompaniment is in the grand staff, with the right hand playing a series of eighth notes and the left hand playing a series of eighth notes. The key signature is two flats, and the time signature is 2/4.

And in temp - ta - tion's hour Save through Thy might-y pow'r  
 O, most mi - rac - u - lous, Thou didst come down to us,  
*Per tu - as se - ni - tas duc nos quo ten - di - mus,*

The fourth system contains the third vocal entry. The vocal line is in the treble clef, starting with a half note 'And' and a quarter note 'in'. The piano accompaniment is in the grand staff, with the right hand playing a series of eighth notes and the left hand playing a series of eighth notes. The key signature is two flats, and the time signature is 2/4.

Thine aid, - O - send us, Hear us in mer - - cy.  
 Low - - ly, - low - ly Though we Thy ser - vants be,  
*Ad lu - cem quam in - ha - bi - tas,*

*p (f)*

Show us Thy fa - vor, So shall we live, and sing praise to  
 Low - - ly, low - ly, low - ly Though we Thy ser - vants  
*Ad lu - cem quam in - ha - bi -*

*f* *poco rit.*

Thee.  
 be.  
*tas.*

*p* *molto rit.*