

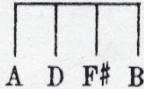
SM 7058

# MARY LOU

3

Uke arr. by Harry Tiedeman

Tune-a-Uke



By ABE LYMAN,  
GEORGE WAGGNER &  
J. RUSSEL ROBINSON

Moderato

Piano

*f*

The piano introduction consists of two staves. The right hand plays chords in a moderate tempo, while the left hand plays a simple bass line. The key signature has one sharp (F#).

*Till ready*

*p*

The piano accompaniment continues with two staves. It includes a section marked 'Till ready' with a repeat sign. The dynamics are marked with *p* (piano).

Voice

I have some-thing on my mind that I've just got to say, Mar-y  
There's a co-zy, bung-a-low that's fixed for you and me, Mar-y

*p*

The voice part is written on a single staff with guitar chord diagrams above it. The piano accompaniment is on two staves below. The lyrics are written under the voice staff.

Lou, \_\_\_\_\_ Mar-y Lou. \_\_\_\_\_ Just the same old  
Lou, \_\_\_\_\_ Mar-y Lou. \_\_\_\_\_ May-be in a

The voice part continues with a melodic line and guitar chord diagrams. The piano accompaniment provides harmonic support. The lyrics are written under the voice staff.



sto-ry in the same old fash-ioned way, Mar-y Lou, ——— List-en, do! ———  
 year or so we'll make it do for three, Mar-y Lou, ——— List-en, do! ———

Chorus

Mar-y Lou, ——— Mar-y Lou, ——— Cross my heart ———

*p-f*

— I love you! ——— Ev-'ry bell in the steep-le is

read-y to ring, ——— And all the peo-ple are plan-ning pret-ty



pres-ents all for you, Mar-y Lou, Won't you

give your prom - ise true? Why for miles a - round they're

wait - ing, to start their cel - e - brat - ing, when you say "I do," Mar - y

Lou! Mar - y Lou!

D.S.