

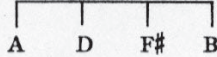
SM 7048

LOVE BOUND

Words by
HARRY D. KERR

Fox Trot Song

Tune Ukelele with Piano



GET THIS SONG
FOR YOUR PLAYER PIANO
OR TALKING MACHINE

Music by
CARL RUPP

Piano introduction musical notation for the first system, featuring treble and bass clefs with various chords and melodic lines.

Vocal and piano notation for the first verse. The vocal line includes the lyrics: "I nev - er knew two eyes with love light / My pris - on is a dream of June - time". The piano accompaniment includes guitar chord diagrams above the staff.

Vocal and piano notation for the second verse. The vocal line includes the lyrics: "shin - ing / ros - es, / Could hold me spell-bound all day through, / Each sweet com-mand a love ca - ress,". The piano accompaniment includes guitar chord diagrams above the staff.

Vocal and piano notation for the third verse. The vocal line includes the lyrics: "I nev - er knew un - til your arms en - twin - ing / And ev - 'ry night with in my heart re - pos - es". The piano accompaniment includes guitar chord diagrams above the staff.

Copyright MCMXXVI by Sam Fox Pub. Co., Cleveland, O. U. S. A.
International Copyright Secured. Printed in the U. S. A.

Sole Agents for Great Britain and the Colonies (excluding Canada, Australia and New Zealand) Keith, Prowse & Company Limited
ALL RIGHTS RESERVED

Including Public Performance For Profit.

Had bound my heart to you. _____ (sweet-heart I'm)
A world of hap - pi - ness. _____ (sweet-heart I'm)

rit.

CHORUS

Love - bound, Love - bound,

nev - er yearn - ing to be free, _____

I know I've found where the rain - bow

ends for me; _____ Time can

nev - er part the ties of sweet-hearts true; _____

— Say you'll be mine for ev - er

Tell me you are Love-bound too. _____

1 2