

SM6880

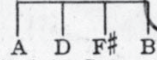
"Queen High"

Cross Your Heart

Ukulele arr. by May Singhi Breen

Words by
B.G. DE SYLVA

Tune Ukulele



Put Ukulele Capo on 3rd fret

James Payne

Music by
LEWIS E. GENSLER

Moderato e dolce

Piano

p

Dick: Seems to me you're rath - er fond of play - ing;
Polly: Real - ly, dear, you should - nt re - pri - mand me;

p

Seems to me you'll nev - er set - tle down.
Yet I must for - give you when you do.

Tell me, do you think I'm wrong in say - ing:
Though a lit - tle fib - ber you may brand me,

Copyright MCMXXVI by HARMS Inc., N. Y.

International Copyright Secured

ALL RIGHTS RESERVED Including public performance for profit

"If you love me, why are you de - lay - ing?"
It's be - cause you do not un - der - stand me.

Of your lov - ing li - bels I have had a pre - view;
Which of us is straight - er? Which, in mor - als, loos - er?

rall. On a stack of Bi - bles Swear and I'll be - lieve you.
I will an - swer lat - er, First we'll hear from you, sir.

Refrain *littlingly*
p-mp Cross your heart and hope to die That you'll be true, And so will I, For -

ev - er and for - ev - er and a day!

Cross your heart and hope to die That I'm the ap - ple of your eye And

nev - er will you ev - er get a - way!

sva.

Morn - ings we will kiss good-bye; At eve - ning kiss hel - lo;

Sun - days we will nev - er be a - part, sweet - heart.

rit. e dim.

Let it rain! The sun will shine If I am yours and

a tempo.

you are mine For - ev - er and for - ev - er cross your

rall.

heart. heart.

a tempo

dim.

pp

sva...