

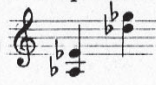
2 SM 7761

Lead, Kindly Light.

Duet for Soprano and Alto.

J. H. NEWMAN.

R. W. MARTIN.



Alto Solo.

p

Lead, kind-ly Light, a-mid th'en-cir-cling

gloom, Lead thou me on, ——— lead thou me on. ——— The night is dark and

I am far from home, Lead thou me on, ——— lead thou me on.

mf Duet.

Keep thou my feet, I do not ask to see The dis-tant

scene, — one step e - nough for me.

scene, one step e - nough for me.

f

Soprano Solo. *p*

I was not ev-er thus, nor prayed that thou — Shouldst lead me

p

on, — shouldst lead me on;— I loved to choose and see my path, but

now — Lead thou me on, — lead thou me on. —

Duet.

mf

I loved the gar-ish day, and, spite of fears, Pride ruled my will,

mf

re -

re-mem-ber not past years.

mem - ber not past years.

p

p

So long thy pow'r hath blest me, sure it still Will lead me on, will lead me

p

mp on — O'er moor and fen, o'er crag and tor-rent, 'till — The night is gone, — the night is

mp

mp *rall.*

a tempo.
mf gone; And with the morn those an - gel fac - es smile, Which I have

mf

a tempo.

accel. loved — long since, — And lost a - while.

f *p* *rall.* - - -

p

a tempo. *p*

accel. *rall.* - - -