

COQUETTE

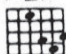
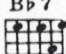

By
IRVING BERLIN

Valse Moderato

Piano introduction for 'Valse Moderato' in 3/4 time, key of B-flat major. The piece begins with a treble clef and a bass clef. The melody in the treble clef starts with a quarter note G4, followed by a half note chord of F4-A4-C5. The bass line starts with a quarter note G2, followed by a half note chord of F2-A2-C3. The piece concludes with a final chord of F4-A4-C5 in the treble and F2-A2-C3 in the bass.

Piano section of the score. It features a 'VAMP' marking above the treble clef staff. The music is in 3/4 time and key of B-flat major. The treble clef staff contains chords and melodic lines, while the bass clef staff provides a steady accompaniment. Dynamics include piano (*p*) and mezzo-forte (*mf*).

VOICE

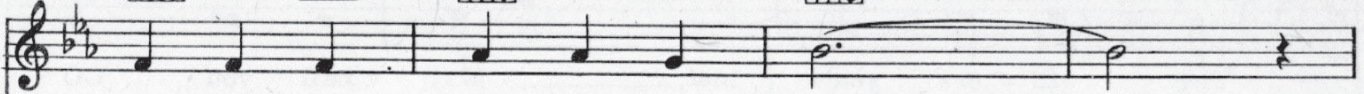
*) Eb  Bb7  Eb 

Just a sweet co - quette, So they say and yet
Now that I love you, And you love me too

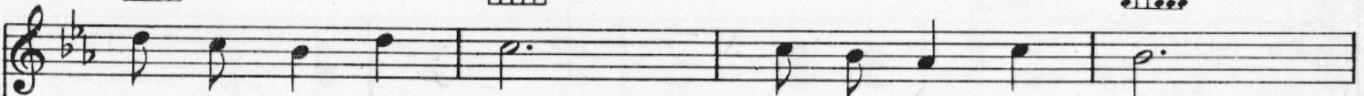
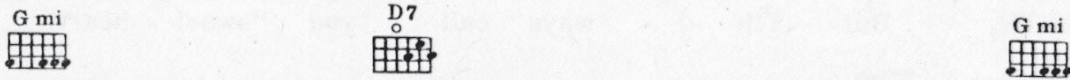
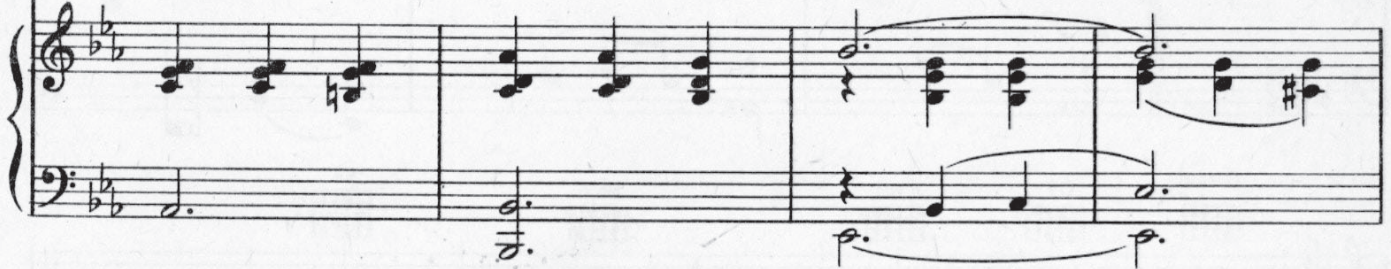
Piano accompaniment for the vocal line. It features a treble clef and a bass clef. The treble clef staff contains chords and melodic lines, while the bass clef staff provides a steady accompaniment. Dynamics include piano (*p*) and mezzo-forte (*mf*).

*) Symbols for Guitar, Chords for Ukulele and Banjo.

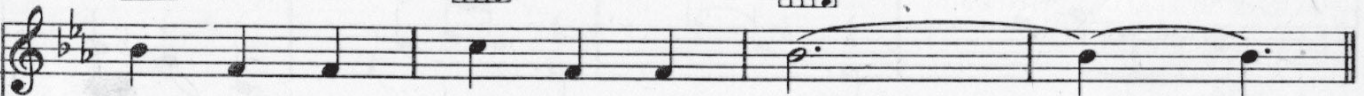
Copyright 1928 IRVING BERLIN



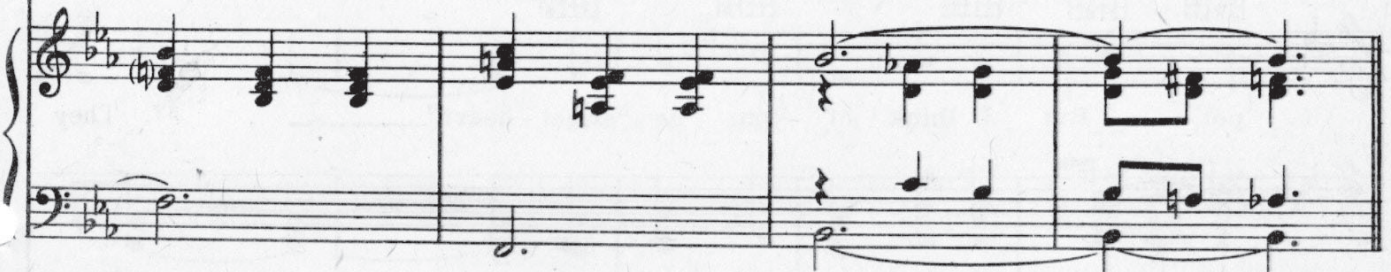
I know how true you can be.
I'll keep you close to my heart.



Just a but - ter - fly, So they say but I
Now that I can see, You be - long to me



Know just how much you love me.
Noth - ing can keep us a - part.



WARNING! Any one who copies the words or music of this song, or any portion thereof, will be criminally prosecuted, under section 28 of the United States Copyright Law, and section 441^a of the New York Penal Law.

CHORUS



The oth - ers you've met, _____ May call you CO -

p-f

Caug.



QUETTE, But I'll al - ways call you "sweet - heart."



They think of CO - QUETTE, _____ As some-thing to

Caug.



pet, But I think of you as "sweet - heart." _____ They



say you're a dev - il with won - der - ful charms, But



I held an an - gel that night in my arms, So



try and for - get, The name of CO - QUETTE, And on - ly re -



mem - ber "sweet - heart." The "sweet - heart."