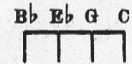


SM 7571

THE WINDING TRAIL

Melody of "Old Refrain"
Published by Special Permission of
Carl Fischer Inc. New York

Tune Uke as follows:



Lyric by
GEORGE HAYDEN

Music by
GEORGE P. HOWARD
Adapted from "The Old Refrain"

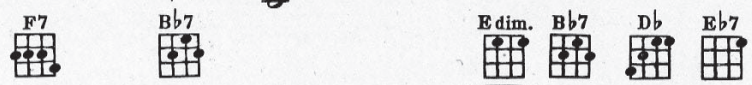
Moderato

1st Eb ALTO SAXOPHONE

2nd Eb ALTO SAXOPHONE



A voice is call-ing me —
The shad-ows of-ten fall —



— from far a - way — "Wont you come back a - gain" — it seems to
— a - cross my way — And then my heart goes back — to yes - ter -

Ab B dim. Ab Db Ab F7 Bb7

say. _____ The flow-ers bloom a - gain _____ up - on the hill _____
 day, _____ I see the ramb-ler rose _____ that used to blow _____

E dim. Bb7 Db Eb Ab Db Dbm Ab C7 B7

— The same sweet night-in - gales _____ are sing-ing still _____ I see those
 — Those old fa - mil-iar lanes _____ we used to know _____ I see those

Bb7 E dim. Bb7 Eb C dim. Bbm C7

child-hood days _____ that used to be _____ Those hap-py wild-wood days _____
 same sweet smiles _____ I loved so much _____ And feel the gen-tle-ness _____



— comeback to me _____ My heart is year-n-ing, burn-ing, turn-ing as I
 — of your dear touch _____ Be-neath the stars, to-night, with light of love a -



roam _____ A voice is call-ing me, and I am go-ing home. _____
 flame _____ I know you're wait-ing, and you shall not wait in vain. _____

Refrain



I'm on the wind-ing trail _____ to home sweet home _____

mf-f

E \flat E dim. B \flat E \flat

I'm on the home-ward road — no more to roam — And some-thing

B \flat 7 E \flat 7 A \flat A \flat m E \flat B7

seems to say — my wan-d'rings through — I'm on the wind-ing trail to

A \flat B \flat 7 E \flat C dim. B \flat 7 // E \flat A \flat A \flat m E \flat

home sweet home, and you. — I'm on the you.

f *fz*