

SM 7164

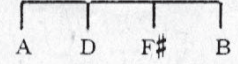
There's A Little White House

(Where The Red, Red Roses Grow)

By BILLY ROSE
& HARRY AKST.

A Rube Bennett Arrangement

Piano Tune Uke. in D



Moderato

f

VOICE



VAMP

Home, Home,
Blue, Blue,

fz

What a ma - gic word, when a fel - low is lone - ly and blue,
When the night de - cends, I'm as lone - some as lone - some can be,

Home, Home, Best you've ev - er heard, When a
Who, Who, Yes who - ev - er spends, That's the

fel - low finds out that he's through, The sun shines east, The
 one that the gang want to see Its how - dy here, and

sun shines west, You all know that song, I know where the sun shines best,
 how - dy there, when you're go - ing strong, Good-bye pal, and good-bye gal,

That song was - n't wrong, Home, Home, Like a tir - ed
 When you're dreams go wrong, Through, Through, With fair weath - er

bird, What a pret - ty lit - tle nest I'm go - ing to, There's a
 friends, I'll go back to those who won't go back on me,

CHORUS

Lit - tle white house on a lit - tle green hill, Where the

p-mf

red, red ros - es grow, There's a

lit - tle white light, In the win - dow to - night, And it

shines for me I know, Tho' the

skies may be cloud - y, Say what do I care, Moth - ers

eyes will say "How - dy," She'll wel - come back her row - dy, To that

lit - tle white house, on the lit - tle green hill, Where the red, red

ros - es grow, There's a grow.