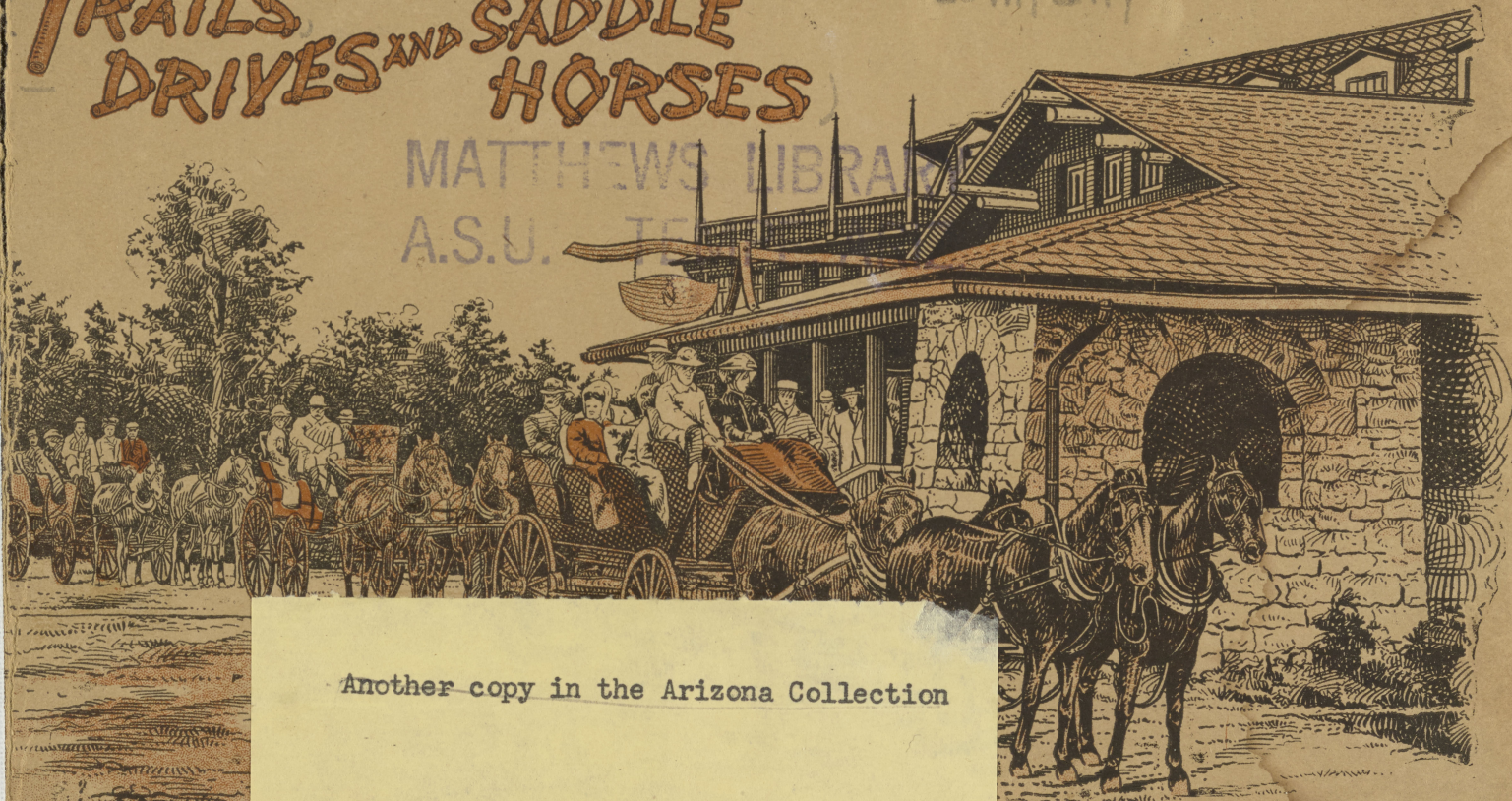


DG-10

Atchison, Topeka and Santa Fe Railway Company

TRAILS, DRIVES AND SADDLE HORSES

MATTHEWS LIBRARY
A.S.U. TEXAS



Another copy in the Arizona Collection

EL TOVAR HOTEL
& BRIGHT ANGEL CAMP.

GRAND CANYON, ARIZONA
FRED HARVEY.

1908



GRAND CANYON
- STUDIO -

TRAIL PARTY LEAVING EL TOVAR HOTEL

Trails, Drives and Saddle Horses

MATTHEWS LIBRARY

A.S.U. TEMPE, ARIZ.

REGULAR TRIP DRIVES

To Hopi (Rowe) Point

	Miles	Rate	Start
Early Drive	3 West	\$1.50	7.00 A.M.

This drive is specially arranged for the convenience of visitors who are leaving on the 8.30 a. m. train, as well as for those who wish to see the Canyon from this Point, with its morning lights. Breakfast may be obtained at 6.30 a. m., after which a prompt start gives abundant time to make the trip.

Yavapai (O'Neill) Point, Including Grandeur Point

	Miles	Rate	Start
	3 East	\$1.00	9.00 A.M.

A magnificent view of the Canyon, showing

the river in two places. Directly opposite on the north side of the river is Bright Angel Creek. From Grandeur Point, one quarter of a mile from Yavapai, the Bright Angel Trail can be seen as far as the Plateau. This trip takes from one and a half to two hours.

Hopi (Rowe) Point, Including Maricopa (Sentinel) Point

	Miles	Rate	Start
	3 West	\$1.00	2.00 P.M.

Sixty miles of the Canyon is seen from Hopi, as well as five different sections of the river. This is conceded to be one of the most magnificent views of the Grand Canyon.

Maricopa Point, one quarter of a mile from Hopi, affords another and different view, extending as it does a considerable distance out into the

917.91
at 24. tr
1908
cap. 1

Canyon, showing the depth of lime and sandstone formations on both sides of the Point. Time of trip one and one-half to two hours.

Library (Schubert)

near O'Connell's Shop, Jan 30 1957

Grand View

	Miles	Rate	Start
	14 East	\$3.00	9.00 A.M.

Leaving El Tovar and Bright Angel Camp at 9.00 a. m., the Grand View Hotel is reached at noon. After lunch sufficient time is allowed for the nearby views before driving to Grand View Point, one mile from the hotel. This view offers a greater variety of scenery than is obtained from many of the other points, including the Grand Canyon from Bright Angel Creek to the Marble Canyon and the Little Colorado River; the Painted Desert to the north, and the Coconino Basin on the south side of the river. These trips consume one day, El Tovar being reached at about 5.00 p. m.

MATTHEWS LIBRARY
A.S.U. TEMPE, ARIZ.



BRIDLE TRAIL IN COCONINO FOREST AT GRAND CANYON

Dripping Springs

Miles	Rate	Start
10 West	\$4.00 each for 3 or more persons.	8.30 A.M.
	For less than 3 persons; \$5.00 extra for guide.	

It is nine miles through the pine forest to the head of Boucher, or Dripping Springs Trail. This trip can be made entirely on horseback, or by wagon to the Rim, and horseback one mile down the trail to Boucher's Camp at Dripping Springs, 900 feet below the Rim. From here the trail continues one and one-half miles along the Red Sandstone Bench, where a close and magnificent view is obtained of the river gorge, as well as of the strata above and below the Red Sandstone. The Trail continues to the river, but for a day's trip Boucher's Camp and vicinity is as far as it is possible to go. A stop for lunch is made at the Dripping Springs. Visitors should not miss this unique and interesting trip combining a ride through the forest and a trail experience. The Dripping Springs Trail was made, after years of hard work, by Louis Boucher, who



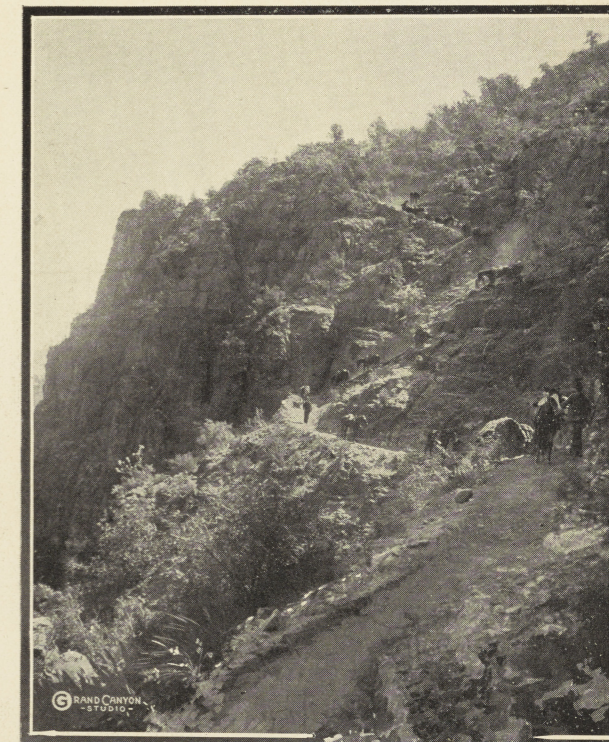
ROWE POINT DRIVE

still lives at the Springs. He also has a Camp under the Tonto Sand, close to the river. Special arrangements can be made to extend this trip over one day. Rates as mentioned above apply to saddle horses for the whole trip, or seats in wagon to Rim.

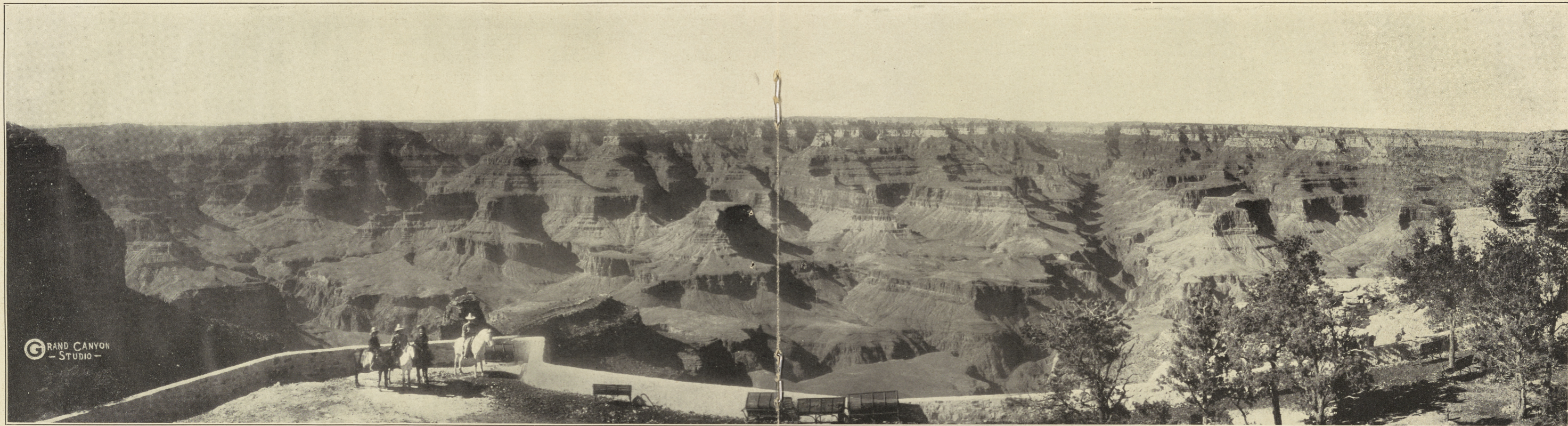
Bright Angel Trail

	Miles	Rate	Start
Engagements for Trail Trip close at 8.15 A.M.	7	\$4.00 each for 3 or more persons.	8.30 A.M.
		For less than 3 persons; \$5.00 extra for guide.	

Leave El Tovar and Bright Angel Camp at 8.30 a. m., returning at 5.30 p. m. Lunch is taken by the guides for the entire party. Those not wishing to go to the river can take the Plateau Trip from the Indian Gardens, which are half way between the Rim and the river. From the edge of the Plateau, 1,300 feet above the river, the granite gorge is in full view, as well as parts of the trail leading from the Indian Gardens to the river. Visitors wishing to go only as far as the Plateau are requested to advise agents before leaving, so that



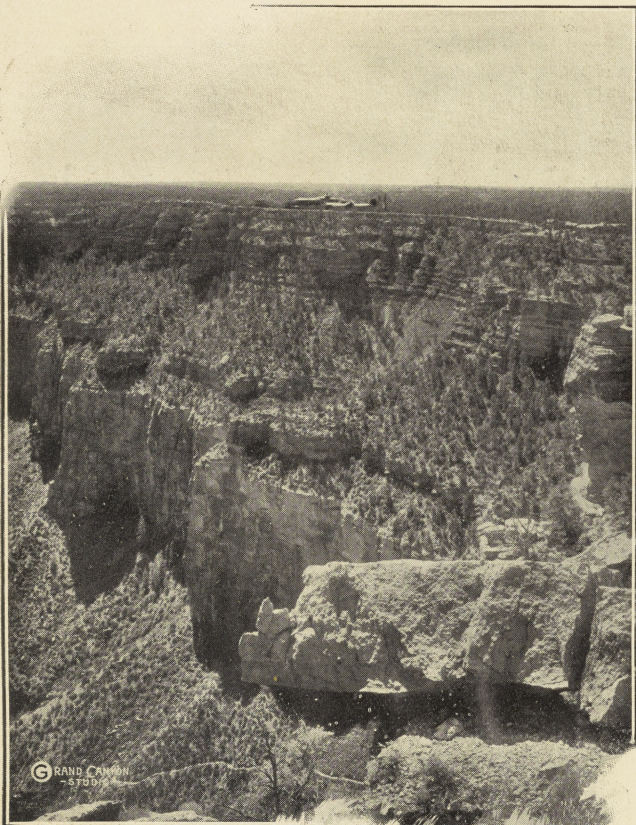
ZIG ZAG
BRIGHT ANGEL TRAIL
GRAND CANYON, ARIZONA



© GRAND CANYON
— STUDIO —

GRAND CANYON FROM EL TOVAR HOTEL

Copyright, 1905, by Detroit Publishing Co.



GRAND CANYON
OF THE COLORADO

arrangements may be made to divide the party at the half-way point.

*Sunset View from Hopi
(Rowe) Point*

Miles	Rate
3 West	\$1.50

As the time of departure from El Tovar and Bright Angel varies at different seasons, visitors will kindly make inquiry from Agents at hotel offices. During the summer it is necessary to dine before leaving. The time of departure is about 6.45 p. m. or 7.00 p. m. This drive takes from one to two hours.

*Cataract Canyon and
Havasupai Village*

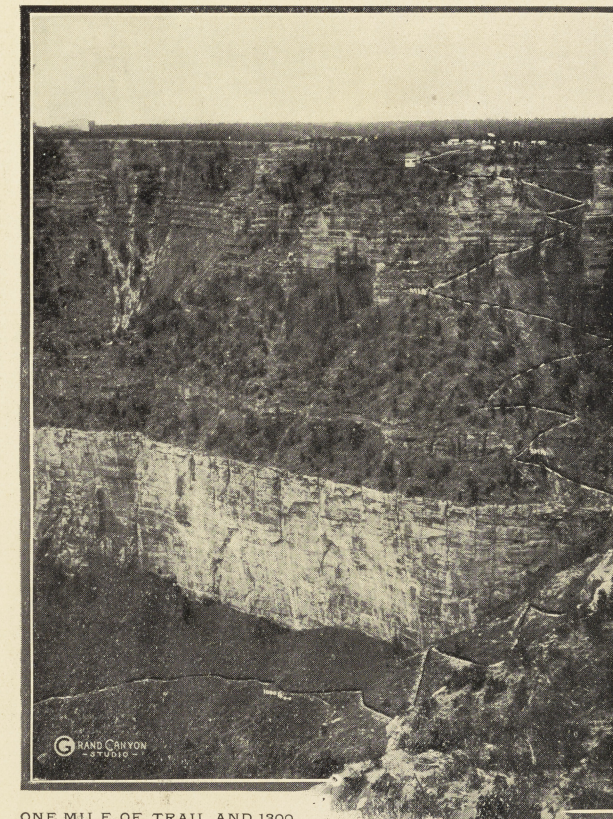
Miles	Rates
50 West	\$20.00 per day, 1 person
	25.00 " " 2 "
	30.00 " " 3 "
	10.00 " " for each additional member of party.

This is a most interesting trip. The first thirty-five miles is made by wagon. Sufficient

saddle animals are provided to carry the party from the top of the Topocobya Trail to the village, a distance of fifteen miles. The usual time spent on the trip is three days, one day going, one at the village and vicinity, and one returning. The stay at the Agency may be extended by arrangement with the Government Indian Agent, who will provide for small parties at the rate of \$2.00 per day each for board and lodging.

The Havasupais number 175 and their village extends for three miles along the Havasu Creek from the Government Agency to Bridal Veil and Mooney Falls. These Indians are self-supporting, raising corn, alfalfa, peaches, apricots, etc. The women are basket makers. From May to October, and sometimes during April, this is an ideal trip for those fond of out-of-door exercise. The scenery is beyond description, entirely different from other sections of the Canyon. An excellent opportunity is given of seeing primitive Indian life and visiting the most unique Indian reservation in the United States.

The above mentioned rates include services of one guide for parties of four or less, and expenses of



ONE MILE OF TRAIL AND 1300
FEET OF PRECIPICE



PICTURESQUE BRIGHT
ANGEL TRAIL
GRAND CANYON, ARIZONA

guide and horse feed, but do not include expenses for board and lodging for members of the party.

*Hance's Ranch and Trails to
Moran and Bissell Points*

Miles	Rates
17 East	\$4.00 per day
	2.50 per half-day
	5.00 per day for guide
	2.50 per half-day

This trip takes one and one-half days and is made with saddle horse and guide. Leaving El Tovar and Bright Angel in the afternoon, Grand View is visited and a stop is made over night at Grand View Hotel. The following morning Hance's Ranch, Moran and Bissell Points are visited, the last mentioned being seven miles beyond Grand View. After lunch at Grand View the return journey is made to El Tovar and Bright Angel. This Trail follows the Rim from Grand View, giving a constantly changing panorama of the Grand Canyon and a close view of the river as far east as the Little Colorado. Hance's Trail, Ayres' Peak and the cliff dwellings at Moran Point are seen en route. Rates

at Grand View Hotel are from \$3.00 to \$4.00 per day.

SPECIAL TRIPS

Besides the above mentioned trips there are many others of great interest to those fond of horse-back riding. Different views of the Canyon along the Rim can be obtained as far east and west as time will permit.

Pima (Hermit) Point, six miles west of El Tovar, affords particularly fine views of the river in several places, including a few of the many rapids, as well as the Red Sandstone Bench along which is the Boucher Trail from Dripping Springs to the river.

Shoshone (Cremation) Point, seven miles east, gives another equally interesting view. Bright Angel and Clear Creek are seen to the north and north-east, and Grand View to the south-east, as well as many views of the River.

There are also many trips that can be taken through the pine forests south of the Canyon.



AN OVERHANGING BOULDER NEAR ROWE POINT

Saddle horses and guides are furnished at the regular rates mentioned for whole or half days.

Bass' Camp

Miles	Rates
24½ West	\$15.00 per day, 1 person
	20.00 " " 2 "
	25.00 " " 3 "
	7.50 " " each additional member of party.

This trip occupies three days, or more, and is made by wagon or on horseback. Bass' Trail, at western end of the Granite Gorge, is an easy route to the river. The view from Havasupai Point near the camp cannot be surpassed. An over-night stop is sometimes made at Bass' Camp, on the way to Cataract Canyon, thereby affording an opportunity to combine these two most interesting trips by the addition of a day or two.

Accommodations at Bass' Camp are moderate in price. Special arrangements may be made to extend the trip over one day. The above mentioned rates include services of one guide for parties of four or less, but do not include expenses for board and lodging for members of the party.

SADDLE HORSES

\$4.00 per day or \$2.50 per half day. English, McClellan, Whitman or Western stock saddles furnished as requested.

GUIDES

\$5.00 per day or \$2.50 for half day.

NOTES

Two days, at the very least, should be allowed at the Grand Canyon in order to take the Trail Trip and the principal drives along the Rim from Hopi (Rowe) Point, three miles west, to Grand View, fourteen miles east.

Visitors are respectfully notified that all trips start promptly at the hours mentioned.

Visitors arriving on morning or afternoon trains are requested to advise agents at hotel offices as soon as possible what trips they desire to make that day.

75¢

SPECIAL CONVEYANCE RATES

Private Conveyance to Rowe or O'Neill Point	\$ 6 00
From one to three persons	
Private Conveyance to both points	12 00
From one to three persons	
Over three persons \$2.00 each additional	
Private Conveyance to Grand View	14 00
From one to three persons	
Over three persons \$3.00 each additional	

