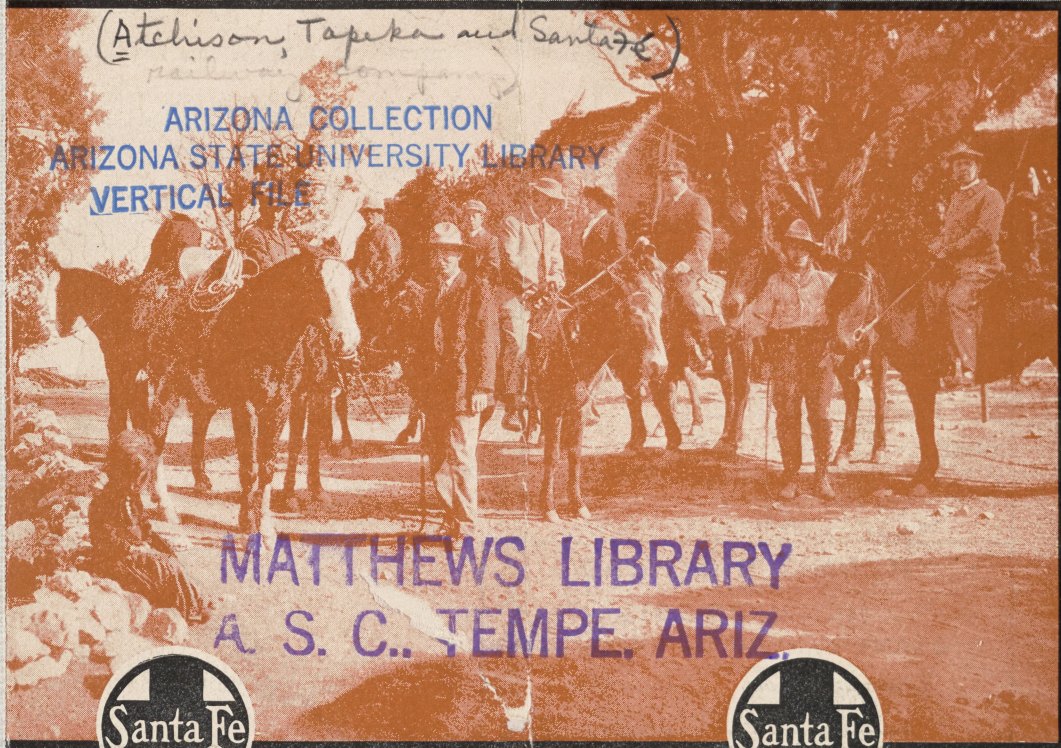


ails, Drives  
and  
ddle Horses,  
and Canyon

Grand Canyon, ARIZONA  
Trails, Drives  
and  
Saddle Horses  
Grand Canyon

(Atchison, Topeka and Santa Fe  
railway company)

ARIZONA COLLECTION  
ARIZONA STATE UNIVERSITY LIBRARY  
VERTICAL FILE



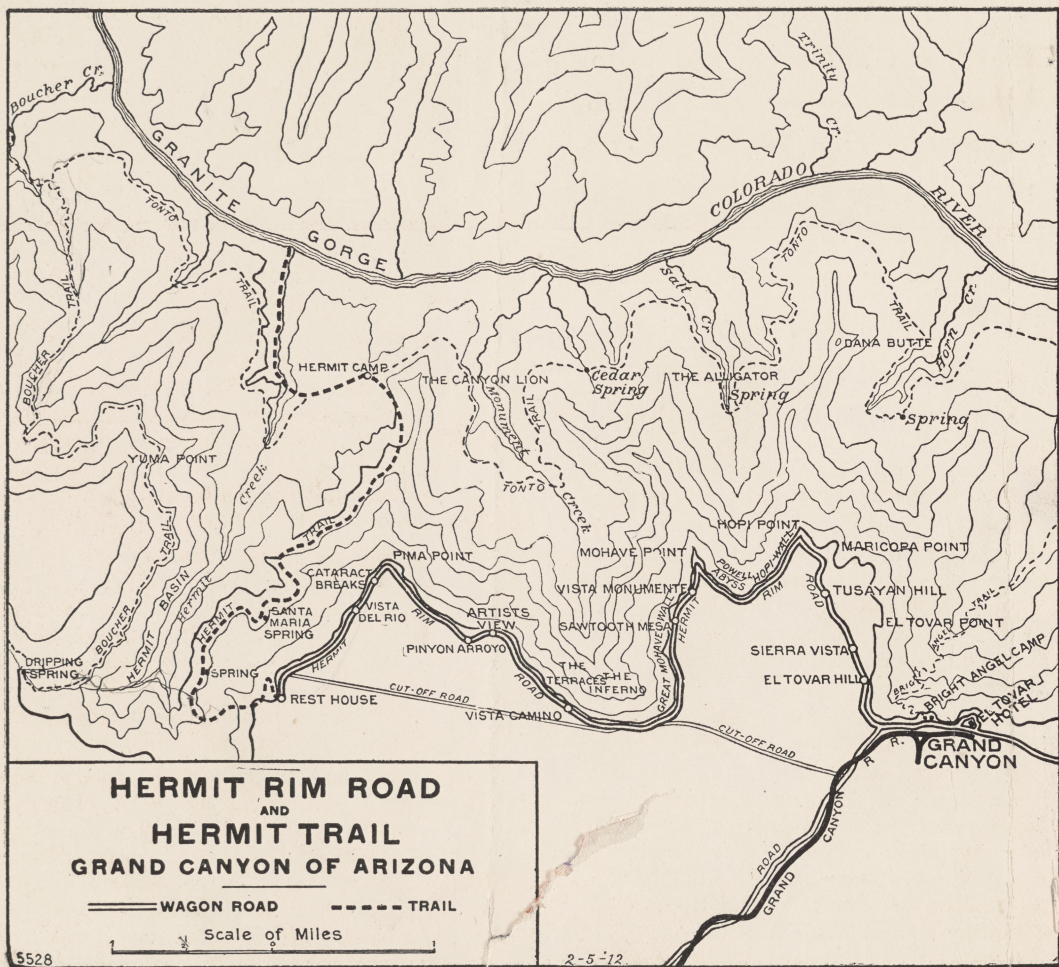
MATTHEWS LIBRARY  
A. S. C., TEMPE, ARIZ.



March, 1912



March, 1912



55 Library (Bachelor) Cat. 29 Oct. 1957 P. ACKLIN  
 ORDERED VIA DAWSON

## Introduction

THIS pamphlet tells the visitor how to see the Grand Canyon. It suggests the best method of conveyance, briefly describes the scenery on the various trails and drives, and gives necessary information about camping trips.

## Hermit Rim Road

The most unique scenic roadway in the world has been built by the Santa Fe from El Tovar Hotel and Bright Angel Camp westward to the head of Hermit Trail, a distance of about nine miles.

It is called Hermit Rim Road. Engineering skill and a liberal purse have combined to make a permanent macadamized thoroughfare, that is wide, safe, dustless and as level as a floor. It may be likened to a city boulevard in the wilderness.

The first section of three miles is the old cinder road to Hopi Point, rebuilt to standard width of thirty feet, with a central driveway, fourteen feet wide, of crushed stone rolled hard. The new section, six miles long, is similarly built. It follows the rim from Hopi Point, by way of Mohave Point, to Pima Point, and thence along east side of Hermit Basin to top of the new Hermit Trail.

No other road in the world is built along the brink of such a tremendous abyss—where, in

Arizona  
917.91  
At 24th  
1912  
copied

places, there is a sheer drop of 2,000 feet within a rod of the travelled track, and another drop below that almost as far. Yet you are as safe as in an easy chair at home.

All along the route the gigantic panorama of El Grande Canyon stretches for miles and miles, a world of beauty unspeakable.

The Hermit Rim Road trip is one which every Grand Canyon visitor should take. In no other way can so much of the Canyon be seen in so short a time.

Thomas Moran, N. A., the noted American landscape artist, says, of the rim road: "It gives the most complete view of the Canyon in its grandest and most varied phases;" and John Hance, the pioneer guide, sincerely adds: "I've lived here a quarter of a century, and never really saw the Canyon until today, on the new road."

Take a ride over this sky-line highway in one of the four-horse coaches of El Tovar transportation department, or in a two-horse surrey. Go on the regular schedule, or special, as you please. Go in the forenoon or afternoon. The round-trip easily may be made in three hours, plus whatever time is allowed for stops on the way and at road end.

Starting from El Tovar Hotel the road quickly ascends El Tovar Hill, with a backward glance across Tusayan Forest to the San Francisco Peaks and neighboring mountains; thence, still among the pines and up cedars, down into Coconino Wash and up Tusayan Hill, by Maricopa Point to Hopi Point, long noted for its unrivalled sunset view.

255366

MATTHEWS LIBRARY



On Hermit Rim Road, near Pima Point

Copyright, 1911, Fred Harvey

From Hopi Point the roadway closely follows the rim, though all the way from El Tovar there are frequent glimpses of the titan of chasms. One mile further on is Mohave Point. You have traversed a huge curve on top of Hopi Wall, with Powell Abyss yawning below, just opposite where the granite gorge is deepest.

Rounding Mohave Point, the next leg of the journey is three and four-fifths miles to Pima Point, the greatest curve of the trip. Below,

and between the two points named, is The Inferno, the most impressive chasm on the south rim. Right under Mohave Point, on the plateau, 3,800 feet below, is a huge rock form called The Alligator; while in the same position, underneath Pima Point, is the Canyon Lion.

Riding along the edge of the Great Mohave Wall, you pass, in succession, Vista Monumente, Sawtooth Mesa, The Terraces, the Cut-Off, Vista Camino, Big Bend Point,

Artists' View, Pinyon Arroyo and Juniper Hill—each with its special appeal.

At Pima Point the road turns southward, for the final one and a fifth miles. From Cataract Breaks there is a wide outlook across the Cataract Canyon country. An unusual view of the Colorado River is afforded at Vista del Rio. Again passing the cut-off road, which is used for freighting and a telephone line, there is a straightaway run to the head of Hermit Trail, at an elevation of 6,400 feet, or about 500 feet lower than El Tovar.

Right here a new and safe trail is being built by the Santa Fe to the Colorado River, eight miles distant. Here, too, a Rest House is proposed. Trail and Rest House will not be ready until midsummer of 1912.

On the return journey the scene seems entirely different, owing to the magic of the sun's shadows, which have changed the aspect of every wall and chasm and temple—whether in the gorge below, or across the river and up the side canyons to the Kaibab Plateau on the north rim.

This drive takes three and one half hours, allowing for stops on the way west at Maricopa, Hopi, Mohave and Pima Points.

*Forenoon: Nine miles west. Start 9:00 a.m. and 10:00 a. m. Rate, \*\$3.00 per person.*

*Afternoon: Nine miles west. Start 2:00 p. m. Rate, \*\$4.00 per person.*

*This trip includes the same stops as in the forenoon with an additional stop at Hopi Point on the return, to see the sunset effects.*

*\*Effective during January, February, March and April.*



Copyright, 1911, Fred Harvey  
Upper Section of Hermit Trail

## Hermit Trail

A new pathway down the south wall of the Grand Canyon, called Hermit Trail, also is



Copyright, 1911, Fred Harvey  
Coach Party leaving El Tovar Hotel



Copyright, 1911, Fred Harvey  
President Taft at Grand Canyon

being built by the Santa Fe, from the end of Hermit Rim Road to the Colorado River. It will not be ready for regular trail service until the summer of 1912, although the trail itself probably will be completed late in the spring. A rest house must be provided, on the Rim, and a camp on the plateau, before the trail can be regularly operated. Meanwhile, as construction proceeds, it is possible for those willing to be in the saddle all day and desirous of seeing that end of the Canyon, to take saddle horses with guide, and go as far down as conditions permit—a one-day round-trip from El Tovar.

Hermit Trail, like the rim road, is both wide and safe, and built on the most approved engineering lines. It is four feet wide all the way, with a low protecting wall of rock on the outside. The descent is accomplished by a series of easy grades. Cuts in the solid rock, likewise heavy stone walls built up as a support, are used wherever necessary for greater safety.

This is the only trail with a southern exposure for the first thousand feet at the top, thereby rendering it comparatively free from cold winds and snow. The lower section opens into the main Canyon with an easy grade to the river along Hermit Creek. The scenery is varied and full of interest—a new thrill for every turn in the trail.

### *Regular Trip Drives*

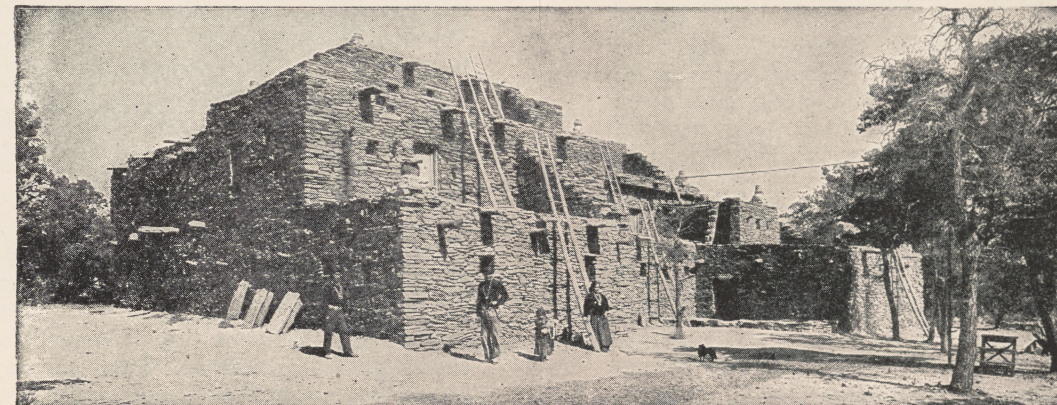
#### TO HOPI POINT (Early Morning)

Sixty miles of the Canyon is seen from Hopi Point, as well as five different sections of the river. This is the most extensive view



Stables at El Tovar Hotel

Copyright, 1911, Fred Harvey



Hopi House, Grand Canyon, Arizona

Copyright, 1911, Fred Harvey

of all, including the entire granite gorge district. Not only is the panorama a titanic one, but noted also for beauty of color and majesty of form.

The ride from El Tovar and Bright Angel Camp is described elsewhere.

This drive is specially arranged for the convenience of visitors who are leaving on the 8.30 a. m. train, as well as for those who wish to see the Canyon from this Point, with its morning lights. Breakfast may be obtained at 6.30 a. m. A prompt start gives abundant time to make the trip.

*Early drive. Three miles west. Start 7.00 a. m. Rate, \$1.50.*

#### TO HOPI POINT (Early Afternoon)

On the early afternoon trip to Hopi Point, a stop is made at Maricopa Point, which is a quarter of a mile east.

Maricopa affords another and different view, extending as it does a considerable distance out into the Canyon, showing the depth of lime and sandstone formations on both sides of the Point. Time of trip, one and one-half to two hours.

*Three miles west. Start 2.00 p. m. Rate, \$1.00.*

#### TO HOPI POINT (Sunset View)

The sunset view from Hopi Point is unrivalled. The panorama here, in broad daylight, seems to be the acme of scenic beauty. But when the afternoon sun nears the horizon and gradually sinks beneath the far mountain ranges, banked with clouds, the sight transcends all others. Then the Canyon depths

become a world of mystery, with giant forms dimly outlined in the ghostly void. And then, miracle of miracles! the western sky becomes a riot of vivid colors, flaming across a field of turquoise, and finally fading to the yellow afterglow.

As the time of departure from El Tovar and Bright Angel varies at different seasons, visitors will kindly make inquiry from agents at hotel offices. During the summer it is necessary to dine before leaving. The time of departure is about 6.45 p. m. or 7.00 p. m. This drive takes from one to two hours.

*Three miles west. Rate, \$1.50.*

#### TO YAVAPAI AND GRANDEUR POINTS

A magnificent vista of the Canyon is that from Yavapai Point, showing the river in two places. Directly opposite, on the north side of the Colorado, is Bright Angel Creek. From Grandeur Point, one-quarter of a mile west of Yavapai, the Bright Angel Trail can be seen as far as the Plateau. This trip takes from one and a half to two hours.

*Three miles east. Start 10.15 a. m. Rate, \$1.00.*

#### TO GRAND VIEW

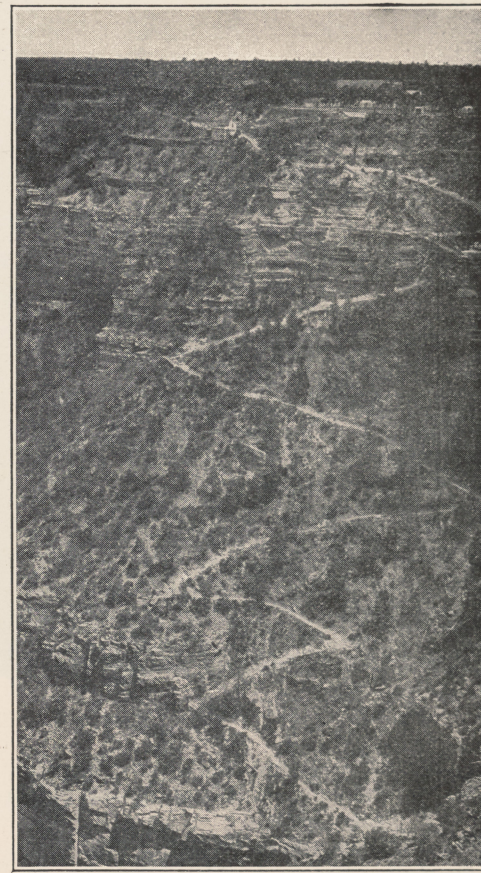
Leaving El Tovar and Bright Angel at 10.00 a. m., Grand View Point is reached by noon. The ride is through the tallest pines of the Tusayan Forest.

After lunch sufficient time is allowed for visiting the nearby outlooks. From here may be seen that section of the Grand Canyon from Bright Angel Creek, west, to Marble Canyon, north, including the great bend of the Colo-



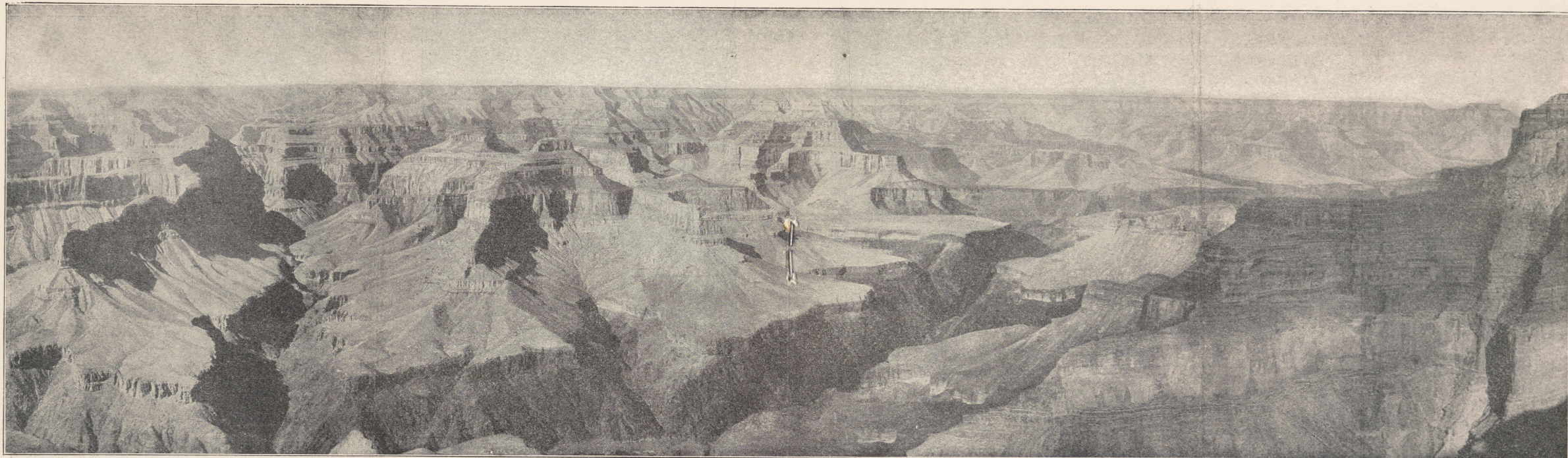
Copyright, 1911, Fred Harvey  
Corkscrew, Bright Angel Trail

rado. On the eastern wall are Moran, Zuni, Papago, Pinal, Navaho and Comanche (or



Copyright, 1911, Fred Harvey  
Upper Section of Bright Angel Trail

Desert View) points, and the mouth of the Little Colorado River. Still further beyond is



Panoramic View of Grand Canyon from Hermit Rim Road, between Mohave and Pima Points

Copyright, 1911, Fred Harvey

the Painted Desert, the Vermillion Cliffs and Navaho Mountain, which, though 120 miles away, is plainly visible.

This trip consumes one day.

*Fourteen miles east. Start 10.00 a. m. Return reach El Tovar and Bright Angel 5.00 p.m. Rate, \$4.00.*

#### TO DRIPPING SPRINGS

It is nine miles through the pine forest by

way of Horsethief Cabins, to the head of Boucher Trail west of and opposite Hermit Trail. This trip can be made entirely on horseback, or by wagon, to the Rim, and horseback one mile down the trail to Boucher's Camp at Dripping Springs, 900 feet below the Rim. From here the trail continues one and one-half miles along the red sandstone bench, and thence to the river; but for a day's trip

Boucher's Camp and vicinity is as far as it is possible to go. A stop for lunch is made at the Dripping Springs. Rates as mentioned apply to saddle horses for the whole trip, or seats in wagon to Rim.

*Ten miles west. Start 8:30 a. m. Rate, \$4.00 each for three or more persons. For less than three persons, \$5.00 extra for guide.*

*Private parties of three or more persons, \$5.00 extra for guide.*

#### **Private Conveyance Rates**

*Hermit Rim Road. Forenoon: From one to three persons, \$12.00. Over three persons, \$4.00 each, additional. Afternoon: From one to three persons, \$15.00. Over three persons, \$5.00 each additional.*

To Hopi Point or Yavapai Point: From one to three persons, \$5.00. Over three persons, \$1.50 each additional.

To both Points: From one to three persons, \$10.00. Over three persons, \$2.50 each additional.

To Grand View: From one to three persons, \$14.00. Over three persons, \$4.00 each additional.

### Bright Angel Trail

Leave El Tovar and Bright Angel Camp at 8:30 a. m., returning at 5:30 p. m. Lunch is carried by the guides for the entire party. Those not wishing to go to the river can take the Plateau Trip. From the edge of the Plateau, 1,300 feet above the river, the granite gorge is in full view, as well as parts of the trail leading from the Indian Gardens to the river.

To River, seven miles. Start 8:30 a. m. Rate, \$5.00 each for three or more persons. Less than three persons, \$5.00 extra for guide.

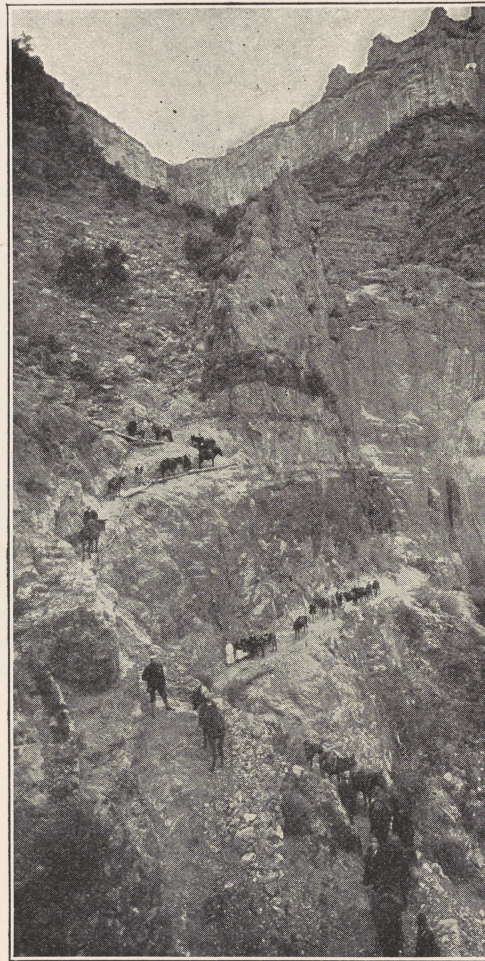
To Plateau, five miles. Start 10:30 a. m. Rate, \$4.00 each for three or more persons. Less than three persons, \$5.00 extra for guide.

Private parties of three or more persons, \$5.00 extra for guide.

Engagements for Trail Trip to River close at 8:15 a. m. Engagements for Trail Trip to Plateau close at 10:15 a. m.

To the Plateau and River same day. Rate, \$6.00 for each person and \$5.00 extra for guide for parties of one or more.

Note—It is necessary that visitors who walk down the trail and desire that guide and mules be sent to meet them, be charged full price and



Copyright, 1911, Fred Harvey  
Jacob's Ladder, Bright Angel Trail

special guide fee of \$5.00. This is unavoidable, as the mules and guide are not available for any other trip, and in addition a toll fee of \$1.00 must be paid by the management for each animal whether the entire trail trip is made or not.

### Horseback Trips

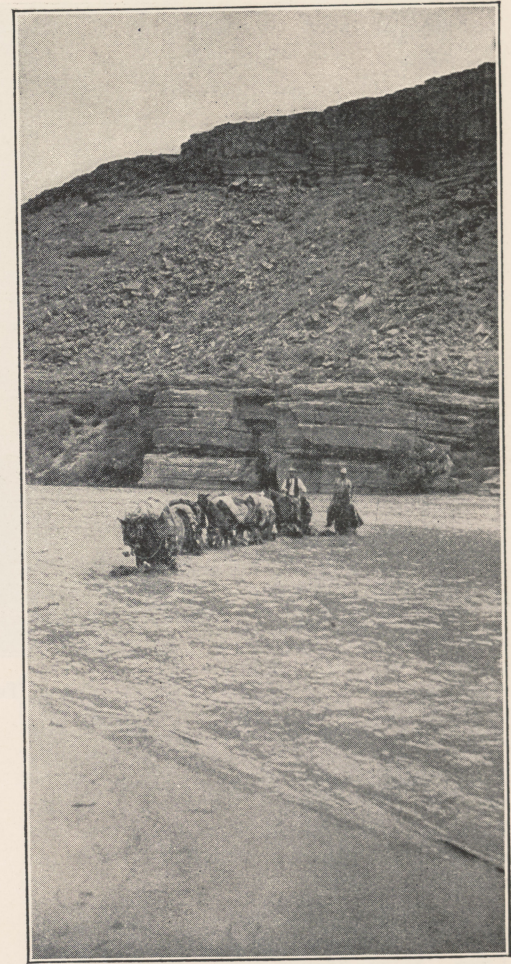
Besides the trips already mentioned there are many others of great interest to those fond of horseback riding. Different views of the Canyon along the Rim can be obtained as far east and west as time will permit.

There also are many trips that can be taken through the pine forests south of the Canyon. Saddle horses and guides are furnished at the regular rates mentioned for whole or half days.

SADDLE HORSES: \$4.00 per day or \$2.50 per half day. English, McClellan, Whitman or western stock saddles furnished as requested.

GUIDES: \$5.00 per day or \$2.50 for half day.

Note—Horseback trips over any of the trails into the Canyon are only permitted when accompanied by guide. This is necessary to avoid risk in meeting trail parties and pack trains.



Copyright, 1911, Fred Harvey  
Crossing the Little Colorado



Copyright, 1911, Fred Harvey

Camping Out in Tusayan Forest, Grand Canyon

### Camping Trips

Camping trips with pack and saddle animals or with wagon and saddle animals, according to the trail selected, are organized, completely equipped and placed in charge of capable and experienced guides.

Some of the many trips are: Boucher Trail Loop, Cataract Canyon, Grand View Trail Loop, Hance-Moran-Zuni points, Desert View, the Little Colorado River, Tuba City

and the Painted Desert; or through the Grand Canyon itself, east or west from El Tovar to the Hopi, Navaho or Supai Indian Reservations.

### Boucher Trail Loop

This trip takes three days. Starting down by way of Bright Angel Trail to the Plateau, the latter is followed west for 30 miles along the Tonto Trail, crossing Horn, Salt, Monument and Hermit Creeks. Camp can be made

the first night on Monument and the second night on Hermit Creek; the third day return by way of Boucher Trail and Dripping Springs, to Rim, thence via Horsethief Cabins to El Tovar and Bright Angel Camp.

*Westward loop of 52 miles. Start 8:00 a. m. Rate, \$12.00 per day for one person. For more than one person, \$6.00 each additional. Rates include guide and complete camp equipment. Provisions extra.*

### Cataract Canyon and Havasupai Village

This is a most interesting trip. From May to October, and sometimes during April, it is an ideal one for those fond of outdoor exercise. The first thirty-five miles to the top of Topocobya Trail is by wagon; the balance of the journey down this trail to the village, fifteen miles, is by saddle animals. The usual time spent is three days—one day going, one at the village, and one returning.

The scenery is beyond description and entirely different from other sections of the canyon.

*Fifty miles west. Rates, \$15.00 per day, one person. \$20.00 per day, two persons. \$25.00 per day, three persons. \$5.00 per day for each additional member of party. Provisions extra.*

*(The rates mentioned above include services of guide for parties of four or less, and expenses of guide and horse feed, but do not include expenses for board and lodging for members of the party while stopping with Indian agent who makes a charge of \$2.00 per day each.)*

### Grand View Trail Loop

This trip takes three days. Starting down by way of Bright Angel Trail to the plateau,



Copyright, 1911, Fred Harvey

Start down Trail, Bright Angel Camp



Copyright, 1911, Fred Harvey

Coach Party, at Pima Point, Hermit Rim Road



the latter is followed east for thirty miles along the Tonto Trail, crossing Pipe, Lonetree, Grapevine and Cottonwood Creeks. Camp can be made the first night on Lonetree and the second night on Cottonwood Creek, the third day returning by way of the Grand View Trail to the Rim, thence via Long Jim Canyon to El Tovar and Bright Angel Camp.

*Eastward loop of 55 miles. Start 8.00 a. m. Rate, \$12.00 per day for one person. For more than one person, \$6.00 each additional. Rates include guide and complete camping equipment. Provisions extra.*

### **Hance's Ranch, Moran and Zuni (Bissell) Points**

This trip takes one and one-half days and is made with saddle horse and guide. Leaving the hotels in the afternoon, Grand View is visited and a stop is made over night at Grand View Hotel. The following morning, Hance's Ranch, Moran and Zuni Points are visited, the last mentioned being seven miles beyond Grand View. The trail follows the rim from Grand View.

*Seventeen miles east. Rates, \$4.00 per day and \$2.50 per half day. Guide, \$5.00 per day and \$2.50 per half day.*

### **Desert View**

This trip can be made in two days with comparative ease. Leaving El Tovar by wagon, at 8:00 a. m., Hull Tank, four miles beyond Grand View Point, is reached by noon, the latter point being visited en route. On arriving at Desert View, twelve miles from Hull Tank, camp is made near the Rim. The Cliff Dwellings are visited, and then is wit-

nessed sunset on the Painted Desert with the Grand Canyon and the Little Colorado River in the foreground. Sunrise next morning is no less beautiful and inspiring. On the return journey lunch is taken at Hull Tank. El Tovar is reached in time for dinner. The trip is a popular one, as it affords within a short space of time some of the finest views of the Canyon, together with desert scenery.

*Thirty-two miles east. Start 8:00 a. m. Rate, \$10.00 per day for one person, \$15.00 per day for two persons, by wagon. \$5.00 per day for each additional person, including guide and complete camp equipment. Provisions additional.*

### **The Little Colorado River**

The trip to the mouth of the Little Colorado is a most interesting one. Leaving El Tovar in the morning by wagon, a distance of thirty miles is covered the first day to Deer Tank, where camp is made. The next day the Cliff Dwellings are visited and the plateau overlooking the Canyon of the Little Colorado is reached by midday. From the edge of the plateau to the bottom of the canyon is a sheer drop of 2,500 feet, while the width of the canyon is only one-fourth to one-half a mile. The remainder of the day is taken up visiting the different Points along the Plateau. On the return journey camp is made at Hull Tank, El Tovar being reached by noon of the following day.

*Forty-five miles east. Start 8:00 a. m. Rate, \$10.00 per day for one person, \$15.00 per day for two persons, by wagon. \$5.00 per day for each additional person. Rates include guide and complete camp equipment. Provisions are extra.*



Copyright, 1911, Fred Harvey

Hopi Indians at Grand Canyon

### **Painted Desert and Hopiland**

Tuba City is in the western portion of the Navaho Indian Reservation and in what is known as the Painted Desert Region. Every mile of the way is full of interest, affording views of the Grand Canyon, the Little Colorado River, the Coconino National Forest and the Desert.

The trip is made with saddle and pack animals. The first night the camp is at Saddle Horse Tanks. Hopi Crossing of the Little Colorado is reached the next afternoon and Tuba City the third day. The Navaho hogans along the Moenkopie Wash, the Paiute Indian Camps and the interesting rock formations,



Copyright, 1911, Fred Harvey

A Navaho Family

including petrifications similar to those of the Petrified Forest, are visited en route.

One of the features of the trip is the Hopi village of Moenkopie.

Fifty miles to the southeast is Oraibi, one of the seven villages of the Hopi, at which pueblo the Snake Dance occurs every year in August. Alternate years the Snake Dance is held at one of the other pueblos.

The route from El Tovar to Tuba City is along the old Hopi trail from the Navaho reservation to the Supai village in Cataract Canyon, which has been used by the Indians for trading purposes for more than three hundred years.

The Painted Desert country affords a most interesting study of a phase of Indian entertainment, little known to white people.

An album of photographs, which were taken on several of these trips, may be seen upon application to agents at El Tovar Hotel. These photographs will give an accurate idea of the scenery along the trail to the land of the Painted Desert, as well as some of the thrilling situations incidental to the unique camps.

*Ninety miles east. Start 7.00 a. m. Rate, \$10.00 per day for one person, \$15.00 per day for two persons. \$5.00 per day for each additional person, including guide and complete camp equipment. Provisions extra as ordered.*

### Notes

*For further information about any of the trips herein mentioned apply to or address Manager El Tovar Transportation Department, Grand Canyon, Arizona.*

Three days, at the very least, should be allowed at Grand Canyon, in order to drive to Pima Point, nine miles west on the new Hermit Rim Road; to make the Bright Angel Trail trip; the principal short drives along the Rim, and to visit Grand View, fourteen miles east.

*Visitors are requested to procure tickets for all trips at hotel office.*

All trips start promptly at the hours mentioned.

It is requested that visitors arriving on morning or afternoon trains advise agents at hotel office as soon as possible what trips they desire to make that day.

Ladies' divided skirts, gentlemen's overalls, hats, etc., for the trail are rented at reasonable prices. Apply at hotel office.

Illustrated pamphlets, describing El Tovar Hotel and the Canyon, may be obtained on the train or at any of the principal agencies of the Santa Fe.

A special representative of the Santa Fe will be on the California Limited west of Albuquerque. It will be his pleasure to give all information and assistance desired. Call on him freely.

Inquire of news agent on train for beautiful book about the Grand Canyon, 50 cents.

W. J. BLACK, Passenger Traffic Manager, A. T. & S. F. Ry. System, Chicago, Ill.

JOHN J. BYRNE, Assistant Passenger Traffic Manager, A. T. & S. F. Ry. System, Los Angeles, Cal.

J. M. CONNELL, General Passenger Agent, A. T. & S. F. Ry., Topeka, Kansas.

W. S. KEENAN, General Passenger Agent, G. C. & S. F. Ry., Galveston, Texas.

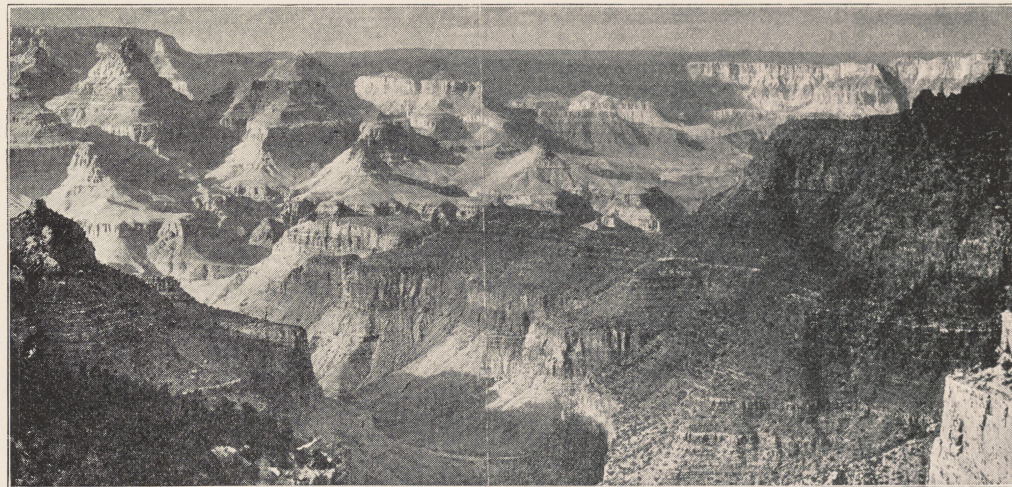
PAUL P. HASTINGS, General Passenger Agent, A. T. & S. F. Ry.-S. F. P. & P. Lines, Prescott, Arizona.

J. BRINKER, General Passenger Agent, S. K. Ry. of T., P. & N. T. Ry.; & Pecos River R. R. Amarillo, Texas.



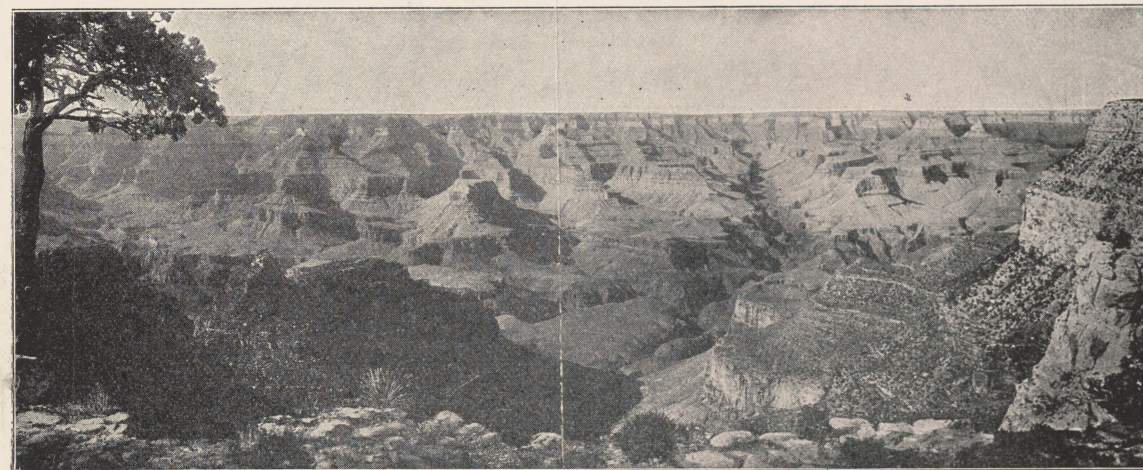
Copyright, 1911, Fred Harvey

Topocobya Trail to Havasupai Village



Copyright, 1911, Fred Harvey

View from Head of Grand View Trail



Copyright, 1911, Fred Harvey

Grand Canyon from Hermit Rim Road, near Mohave Point

