

MUSIC TEACHERS NATIONAL ASSOCIATION

STATE ASSOCIATIONS

BOOKLET

FOR

1971 - - - 1972

---

# MTNA

---

MEMORANDUM

---

DATE: October 10, 1989

TO: State MTNA Foundation Chairmen  
State Association Presidents  
MTNA Division Presidents  
MTNA National Competition Chairmen  
MTNA Administrative Committee  
MTNA Foundation Trustees

FROM: Richard Morris, MTNA President

RE: The new MTNA Foundation

**Please note: Effective immediately all references to the former "MTNA Scholarship Foundation" are to be replaced by the words "MTNA Foundation."**

Now that the summer is past and the new teaching year is well underway, I would like to bring you all up to date on the progress of the new MTNA Foundation.

With the dissolution of the former MTNA Scholarship Foundation (please see June/July 1989 AMT, National Association News), the MTNA Administrative Committee moved to create a new foundation. This new foundation will carry on much of the same activity as the former foundation and will function in line with the philosophies and goals of MTNA.

**First and foremost, the MTNA Foundation will continue to award travel grants to state associations to assist student winners of MTNA competitions with their travel expenses associated with division and national final competitions. And, as a special incentive this year, the MTNA Foundation will automatically increase each travel grant awarded by an additional 25%!**

For instance, if the travel grant award for a state is computed to total \$400 for this year, the MTNA Foundation will add an additional \$100 to the award for a total of \$500.

This 25% incentive program is being implemented on an experimental basis this year and will be evaluated following the awarding of this year's grants. All MTNA-affiliated state association presidents and MTNA Foundation Chairmen will receive official state travel grant application forms and instructions in a few weeks. As in the past, a December 1 deadline for receipt of the application materials will be in effect.

October 10, 1989

Page 2

The former "Foundation Scholar" program which awarded \$1000 to each of three high school seniors competing in the national finals of the MTNA competitions, is being held in abeyance this year pending review by the new foundation trustees. (The \$3000 that would have been used for this purpose will this year be used to provide the additional 25% incentive for travel grants.)

The MTNA Foundation was formally brought into being at the June 1989 meeting of the MTNA Administrative Committee. At that time the Articles of Incorporation and Code of Regulations (bylaws) were adopted. MTNA officers L. Rexford Whiddon, Margaret Lorince and I agreed to serve as the required "initial trustees" of the new entity until a full roster of trustees could be named.

The Code of Regulations of the MTNA Foundation states:

The Board shall be composed of seven Trustees. The Trustees will consist of four officers of the Association (MTNA), a representative of the music industry and two people who have a consistent record of financial support for the foundation. The Association Executive Director shall serve as a Trustee ex-officio without vote.

The roster of trustees is now complete for 1989-90 and consists of:

Richard Morris, MTNA President  
Margaret Lorince, MTNA President-Elect  
L. Rexford Whiddon, MTNA Treasurer  
Shirley Bartzen, MTNA Secretary  
Karl Bruhn, Director of Market Development of the  
National Association of Music Merchants (NAMM)  
Ray Cramer, former MTNA Eastern Division President  
Margaret Ott, former member of the MTNA National Executive Board  
Robert Elias, MTNA Executive Director, (ex officio)

The first formal officer elections will be held during a meeting at the upcoming 1990 MTNA national convention in Little Rock. Until that time, it is my pleasure to serve as MTNA Foundation President, and Margaret Lorince and L. Rexford Whiddon are serving as MTNA Foundation Secretary and Treasurer, respectively.

Among the new foundation's purposes are: to provide scholarships, awards and prizes to exceptionally talented young persons to further promote their musical education and careers; to provide travel expenses, including living costs in connection therewith, for talented young people who could not otherwise afford to participate in division and national auditions of MTNA; to make gifts or contributions to individuals or organizations in the furtherance of education and research in music; to demonstrate the value of music teaching and thereby improve public understanding of the profession; and to present lectures, seminars, symposia and similar educational endeavors on topics of importance to the music teaching profession.

October 10, 1989

Page 3

For your information, the transferral of the former MTNA Scholarship Foundation corpus of approximately \$250,000 to a special trust account as voted by the former foundation board has not yet been completed by the former trustees, but it is expected to take place soon. Those funds are to be placed in perpetual trust with the proviso that only the interest money from this fund may be used for travel grant purposes as has been done in the past.

At the formation meeting of the MTNA Foundation, the initial Trustees moved to establish a combined total corpus of \$500,000 as an initial goal. To this end MTNA has already contributed \$25,000 and intends to commit substantially more pending review by legal and financial counsel.

In another move to bring the activities of the MTNA Foundation into closer collaboration with MTNA, the foundation will administer the award money for the various MTNA national competitions. The MTNA Foundation will receive the money from the sponsoring firms and will also provide the winners' awards at the convention.

The MTNA Foundation, while firmly committed to the travel grant program, will also seek additional appropriate opportunities to fulfill its charter. Various possible programs and projects are currently under discussion, and information about these will be forthcoming as decisions are reached.

#### **Special Note to State MTNA Foundation Chairs**

Your work has always been the cornerstone of the national foundation program, and your patience during this transition period is deeply appreciated. Please continue your fine work in generating contributions to the new foundation. Be sure that members are aware that checks are to be made payable to "The MTNA Foundation" and sent directly to:

The MTNA Foundation  
Suite 1432  
617 Vine Street  
Cincinnati, OH 45202-2434

Members who have contributed to the former foundation in the last two years will shortly be receiving a contribution form so that they may continue their support of the new foundation. (Due to the change in dues collection procedures this year, it was decided not to send contribution envelopes to the entire membership.) In addition, a contribution form will appear in the December/January issue of American Music Teacher for use by members who have not been recent contributors.

When encouraging your state association colleagues to contribute to the new Foundation, please be sure to mention this year's special 25% increased award incentive program. And, as in the past, the basis for travel grant awards will depend on the number of \$10 contributions received from each state by December 31, 1989.

**President**

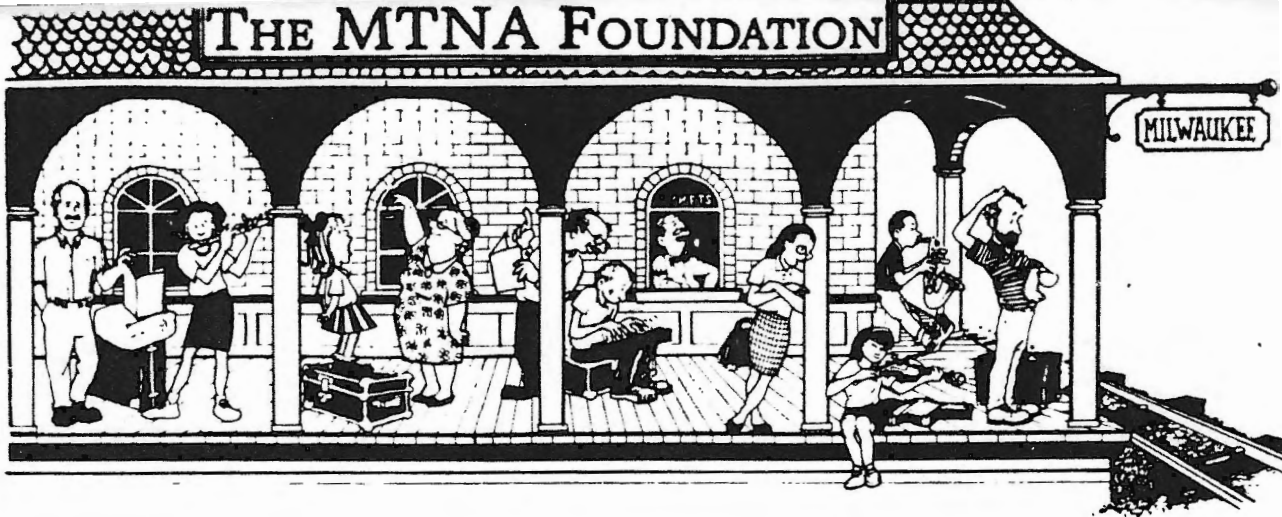
Margaret Lorince  
105 Sparrow Drive  
Isle of Palms, SC 29451  
(803) 886-8892

**Treasurer**

L. Rexford Whiddon  
Schwab Department of Music  
Columbus College  
Columbus, GA 31993-2399  
(404) 568-2049

**Secretary**

James C. Norden  
Department of Music  
Alverno College  
Milwaukee, WI 53215  
(414) 382-6136



October 23, 1991

Karl Bruhn  
NAMM  
5140 Avenida Encinas  
Carlsbad, CA 92008-4391  
(619) 438-8001

Ray Cramer  
126 Weatherby Street  
Dalton, PA 18414  
(717) 563-1890

Ruth Edwards  
12 Valentine Hill Road  
Durham, NH 03824  
(603) 868-2752

Margaret Ott  
1427 East Overbluff  
Spokane, WA 99203-3732  
(509) 534-6683

Robert J. Elias,  
Director  
Ex Officio  
617 Vine Street, Suite 1432  
Cincinnati, OH 45202-2434  
(513) 421-1420

To: MTNA State Presidents  
MTNA Foundation State Chairs &/or State Silent Auction Chairs

From: Ray Cramer, MTNA Foundation Trustee

Re: MTNA Foundation Silent Auction

It is official. The Silent Auction will fly at the National Convention in Milwaukee. I am thrilled with the positive response. I had requested the October 5th deadline to hear from the states because that was the deadline we needed to put the first items of interest concerning the auction in the December/January issue of *American Music Teacher*. I appreciate your having responded so promptly. All the responses were positive.

Some of the possible donations: Amish Quilts, cases of wine, possibly a case of live lobsters from Maine, Brass Music Stand, and many more just as exciting.

With this positive response and all the enthusiasm generating from it, the silent auction is sure to be a smashing success.

Do not do anything at this time. I will send each state auction chair person a packet in January which will contain a form to describe the items and shipping instructions. Please do not make any plans to ship to Milwaukee until I give you these instructions in January.

We have also decided to have one table of less expensive items at the auction so that there is "something available for everyone."

STATE PRESIDENTS: If you have not had your state convention yet, please take up the auction at your convention. You should take extra note that Ben Whitten, my co-chair has procured the services of Ruth Edwards, Susanne Guy,

---

# MTNA FOUNDATION

---

SPRING

N E W S L E T T E R

1991

## 1991-92 OFFICERS AND TRUSTEES ELECTED

The elections for the MTNA Foundation Officers and Trustees were held at the MTNA national convention in Miami. The new officers for 1991-92 are: Margaret Lorince, President; and James C. Norden, Secretary. Continuing in the position of treasurer is L. Rexford Whiddon. Reappointed were Karl Bruhn, Ray Cramer, Margaret Ott and Robert J. Elias (ex-officio). A new trustee for the 1991-92 term is Ruth Edwards. Following the elections, the Foundation trustees expressed their sincere appreciation to outgoing trustee Shirley Bartzen.

---

## PROGRAM UPDATES FOR THE 1991-92 MEMBERSHIP YEAR

At its summer meeting last July in Miami, Florida, the MTNA Foundation board of trustees developed and adopted a three-year operational plan for the foundation. The plan serves as a guide for the planning of new programs and for strengthening existing ones. The MTNA Foundation trustees reviewed the progress of the foundation's three-year plan at its meeting during the MTNA national convention in Miami and voted to focus their attention in 1991-92 on the following areas: grants for non-MTNA auditions/festivals, tuition scholarships for precollege students, an annual fund-raising event at the MTNA national convention and a deferred giving program.

### Grants for Non-MTNA Auditions/Festivals

The MTNA Foundation trustees are pleased to announce the continuation of the state grants for non-MTNA auditions/festivals. This program of providing assistance to MTNA-affiliated

state associations for state sponsored competitions and festivals was implemented during the 1990-91 membership year. Thirty-eight states requested funding to support their competitions and festivals. At their meeting during the MTNA national convention in Miami, the trustees voted unanimously to continue this funding at its current level, authorizing a maximum of \$100 per state association desiring assistance for the 1991-92 membership year.

### Tuition Scholarships

Newly elected President Margaret Lorince has appointed an ad hoc committee comprised of Ruth Edwards (chairman), former state presidents Pat Powers (Texas) and Sue Trosclair (Alabama) and current state president Christine Kefferstan (West Virginia) to investigate a program of tuition scholarships for talented precollege students with financial need who study or wish to study with independent music teachers. The goal for this committee is to develop a preliminary plan and guidelines for the funding and disbursement of these scholarships, possibly through state associations, and present their preliminary recommendations at the MTNA Foundation trustees meeting in June.

### Annual Fund-Raising Event

An ad hoc committee chaired by Ray Cramer was established to investigate the feasibility of a silent auction for the 1992 MTNA national convention. If a silent auction is not feasible for the 1992 convention, the committee will make recommendations for alternative fund-raising events.

### Deferred Giving

The MTNA Foundation trustees are eagerly exploring alternative funding sources for the MTNA Foundation. One such alternative is a deferred giving

program where donors contribute to the MTNA Foundation via deferred gifts. An ad hoc committee comprised of L. Rexford Whiddon (chairman), Karl Bruhn and Robert J. Elias is investigating the mechanics of a deferred giving campaign, including the development of a goal and mission for such a campaign, as well as a system for accepting and handling donations.

---

## NEW FUND-RAISING INITIATIVES EXPLORED

Another exciting development in MTNA Foundation fund raising is a new program of corporation and foundation solicitation. Corporate and foundation solicitations (in the form of grant requests) will supplement the ever-increasing level of individual donations in support and furtherance of the MTNA Foundation's three-year operational plan. The first phase of this program is complete: hundreds of corporations and foundations have been researched to determine their funding priorities, and initial contact to prospective donors has been made. Formal applications to selected corporations and foundations will be made following the June meeting of the MTNA Foundation trustees.

---

## TRIBUTE GIFTS

A number of the donations the MTNA Foundation receives are gifts in honor or in memory of family and friends. The trustees of the MTNA Foundation have established a mechanism for accepting and acknowledging these special gifts. Each contribution is acknowledged with engraved cards, one to the donor of the tribute gift and one to the family of the person honored or memorialized. These special donations are also recognized in the MTNA Foundation's newsletter.

The MTNA Foundation expresses appreciation to the following contributors.

**July 1990 Through March 1991  
MTNA Foundation Contributors**

**Founders Society, Platinum Circle,  
\$10,000 or more**  
The Farny R. Wurlitzer Foundation  
Music Teachers National Association, Inc.

**Founders Society, Gold Circle,  
\$5,000-9,999**  
Yamaha Music Corporation, USA

**Founders Society, Silver Circle,  
\$2,500-4,999**

**Founders Society, Bronze Circle,  
\$1,000-2,499**  
Stephen J. Belth  
CPP/Belwin, Inc.  
The Selmer Company

**Benefactor  
\$500-999**

**Guarantor  
\$250-499**  
Kansas Music Teachers Association  
Pennsylvania Music Teachers Association  
Pennsylvania Music Teachers Association-Student Chapter

**Sustainer \$100-249:**

*Arizona:* Central District of Arizona State Music Teachers Association; *California:* James W. Bastien, Sylvia Shepherd, Scott M. Smith; *Georgia:* L. Rexford Whiddon, Greater Atlanta Music Alliance, Gwinnet County Music Teachers Association; *Idaho:* Virginia W. Willard; *Illinois:* Student Foundation of Illinois State Music Teachers Association-Salt Creek Branch; *Indiana:* Indiana Music Teachers Association; *Kentucky:*

Karen K. Griffin; *Michigan:* Natalie Matovinovic; *Missouri:* Shirley A. Bartzen; *Nebraska:* Florence M. Witt; *New Hampshire:* Ruth S. Edwards; *Ohio:* Robert J. Elias, Virginia Marks, Richard Morris; *Oklahoma:* Accredited Music Teachers Association of Central Oklahoma; *Pennsylvania:* Ray Cramer, Lehigh Valley Chapter of Pennsylvania Music Teachers Association; *Texas:* National Piano Foundation; *Washington:* Bernice A. Lettenmaier, Margaret S. Ott.

**Supporter \$50-99:**

*Arizona:* Maxine E. Manewal, Gloria G. Ritt, John L. Yousling, Arizona State Music Teachers Association; *California:* Donna J. Clarke, Hemet Valley Music Teachers; *Colorado:* Mary E. Clark, Wayne M. Clegern, Gayle Larsen; *Delaware:* Wm. Benjamin Whitten; *District of Columbia:* Sigma K. Duty; *Georgia:* Lois Finlay, Wayne Gibson, Gerri Murphy, J. David Watkins, Athens Music Teachers Association; *Illinois:* William J. Browning, Elaine Illingworth, Carol J. Nelson; *Indiana:* Barbara J. Cunningham; *Michigan:* Barbara B. Dixon, Virginia M. Wulff; *Missouri:* Patricia R. Pierce; *Montana:* Ruth H. Rotondi; *New Hampshire:* New Hampshire Music Teachers Association-Seacoast Local Association; *New Mexico:* Mary Lois Kerr; *New York:* Ludwig Sheffield; *North Carolina:* Betty W. Mooney, David C. Pinnix, Mary Eunice Troy; *Ohio:* Lois M. Byers, Harriet F. Green, Frank L. Hussey, Marjorie M. Seeley, Ohio Music Teachers Association; *Oregon:* Portland District-Oregon Music Teachers Association; *Pennsylvania:* Betty Eltha Innis, Wm. Benjamin Whitten, Main Line Music Teachers Association; *South Carolina:* Margaret Lorince; *Tennessee:* Helen Louise Stout; *Texas:* Marlee G. Dietz.

**Friend \$25-49:**

*Alabama:* James Heustis Cook, Renee Ewing, Rose W. Johnson, Suzanne Lanier, Frances E. Schwemmer, Amelia C. Wilters; *Alaska:* Mary Jane Harris; *Arizona:* Evonne Beattie, Mandarin G. Cheung-Yueh, Ralph Lockwood, Carol Sue Rickel, Beatrice Searles, Tucson Music Teachers Association; *Arkansas:* Robert Campbell, Dorothy Brin Crocker, Sherry L. Mashburn, William Perryman, Music Teachers Association of Central Arkansas; *California:* Beatrice E. Anson, Karl Bruhn, Bonnie Callan, Louise Yvonne Frye, Rita M. Fuszek, Emily R. Lorraine, Freddie Lu McGinnis, Ilana Mysior, E. Joyce Rae, Louise P. Savage, Frances N. Thiel, Marienne Uszler, Marlowe L. Wilcox, Nancy Bricard Woods, Eunee Yee, Betty Liu Yeh; *Colorado:* Martha B. Merriam, Margaret A. Peterson; *Connecticut:* Carolyn B. Backer, Mary Jane Johnson, Stephanie Mixer, Emily L. Oppenheimer, Annette Shapiro, Middlesex-New London Connecticut State Music Teachers Association.

tion; **Delaware:** Jeanne L. Pascal; **Florida:** Marian K. Gabriel, Mariana Sarrica Hadden, Elizabeth D. Ludwigen, Iras Lavine Roback, E. Rebecca Rodenberg, Mary Coleman St. John, Julia W. Sublette, Sylvia White; **Georgia:** Tommy Joe Anderson, Mary F. Blankenbaker, Aurelia Campbell, Marie B. Clary, Mary Lynn Darden, Julie Kirksey, Martha L. Melton, Betty M. Notling, South Metro Atlanta Music Teachers Association; **Hawaii:** Winfred Hancock; **Idaho:** Avonne Higgins; **Illinois:** Charlotte C. Arnstein, Bernice R. Bloom, Viola May Clair, Ann Collins, Joan Drolet, Lois Humbert, Janice E. Johnson, Rosa Drake Julstrom, Roberta Savler-Lysaght, Judith M. Peterson, Marlyce A. Peterson, Betty Jane Scott, Herman Spier, Betty J. Woods; **Indiana:** Verna Abe, Elizabeth J. Brock, Ruth D. Colbert, Annette Conklin, Jack L. Eaton, Mavorette N. Flummerfelt, Cynthia E. Friley, Maxine Gruoner, Margaret S. Harrison, Arlene M. Hinckle, Joan Kelham, Martin S. Marks, Stella V. Tatlock, Judith M. Waller, Elfrieda Winninger; **Iowa:** Deanne Tibben; **Kansas:** Karen M. Halverhout, Betty S. Werner; **Kentucky:** Ruth Davis, Mildred N. McClellan, Nancy W. Parker, Virginia Schneider, Richard J. Scott, Evelyn Walker; **Louisiana:** Patricia C. Bulber, Donald Cornell, Florence R. Day, Linda Mizelle Kidd, Alice S. Kronenberger, J. K. Lambert, Emily Belle O'Bannon, Dorothy Sahlmann, Lisa Holloway Sober, Lafayette Piano Teachers Association; **Maine:** Anonymous, Linda L. Russell; **Maryland:** Barbara D. Brown, Winifred P. Hyson, Margaret Morgan, Thomas Schumacher, Joan Singer Spicknall, Alta G. Thomann, Robert Weirich, Margaret U. Wright; **Massachusetts:** Nancy D. Oliva, Irene C. Reed, Sue Liu Wen; **Michigan:** Jill Christian, Frances A. Danforth, Magdalena Ezoe, Lila H. Kempter, Merilee Magnuson, Diana S. Miller, Pauline T. Moore, Deanna L. Offringa, Blythe Owen, Colette J. Romzick; **Minnesota:** Jeanne Baldy, Marcia M. Knuttila, Audrey Larson, Verona E. Schiller, June M. Torrison; **Mississippi:** Shawn C. Balentine, Mary Kay McDowell; **Missouri:** Russell W. Baker, Nancy H. Bliss, Janet L. Houser, Inez Hunt, Constance E. McPherson, Rita Marie Resch, Carole J. Riley, Patricia B. Schultz, Dolores N. Zupan; **Montana:** Evelyn Lindblad Folland, Barbara J. Gulick, Mina W. Nelson, Therese Ann

Wagner, Palma Wolverton; **Nebraska:** Nebraska Music Teachers Association; **Nevada:** Carol R. Bourne, Ruth B. Brewer, Sandra R. Young; **New Hampshire:** Connie Chesebrough, Jeannie F. Goodwin, George G. Loring, Jr.; **New Jersey:** Russ Pride, Margaret Sheneman; **New York:** Margaret P. Butterly, Dorothy A. Flood, Carol H. Grossman, Peter Hall, Bernard Kirshbaum, Bertha F. Lang, Wilma Machover, Isaac Malkin, Mary Moran, James Lee Vatter, Eugene Weinstein, Esther Hoffman Wexler; **North Carolina:** Marilyn S. Brown, Vivian Miller Dula, Diane W. Higgins, Constance H. Koris, Charles F. Nakarai, Robert Setzer, Hjordis Tourian, North Carolina Music Teachers Association; **North Dakota:** Kathleen R. Johnson, Frank C. Pearson, Jr., North Dakota Music Teachers Association; **Ohio:** Karen A. Furr, Joseph J. Licitri, Helen R. Sheeter, Melanie A. Vlad, Barbara H. Wasson, Lindsay A. Zierolf, Coyle Music Centers, Inc.; **Oklahoma:** Charlotte J. Donnell, Mary Ann Head, Esther Sheldon Evins; **Oregon:** Exine A. Bailey, Virginia H. Buhn, Marjorie G. Fairly, Loleta L. Oleksak, R. Cloyd Riffe, Rogue Valley District of Oregon Music Teachers Association; **Pennsylvania:** Mildred S. Ault, Jean M. Fox, John F. Harrison, Susan D. Miller, Gloriana Sewell, Jane E. Sheppard; **Rhode Island:** Margaret D. Gidley; **South Carolina:** Dily J. Back, April M. Davenport, Charles T. Gaines, Peggy B. Kaufmann, Leonice T. Kidd, Sharon M. Sawyer; **South Dakota:** Joyce Kurtz, J. Earl Lee, Lucille M. Meyer, Besse S. Shober, Mary Alice Spencer; **Tennessee:** Benjamin D. Caton, III, Geraldine L. Howard, June H. Huffman, Yoriko Kitai; **Texas:** Norma H. Auchter, Lora Lynn Christensen, Marylynn L. Fletcher, June Leondar, Martha F. MacDonald, Jeanette B. Myers, Mary S. Newton, W. L. Pitts, Jr., Jack Powers, Jr., Christina M. Stabe, Tom Xin-Ming Ye; **Utah:** Paul C. Pollei; **Vermont:** Frank W. Lidral; **Virginia:** Ann Lee Burcher, Anne H. Edwards, Sally Earough Goff, Anne M. Krauss, Hobart L. Langrall, Mary Parks McKann, Elizabeth Gus Pappas, Jean Frances Reif, Anita L. Renfroe, Elizabeth R. Spiers, Patricia Veliotis; **Washington:** Faye W. Bichon, Connie C. Hungate, Gracie Jones, Carla H. Kaatz, Thelma McCoy; **West Virginia:** Carol A. Beall, Alice Virginia Casto, Judith M. Lambert, Iris K. Malcom,

S. Jane Mangus; **Wisconsin:** Martha E. Brueggeman, Mary A. Dickson, Eileen R. Herrling, Sara Bradley Mason, Judith A. McBroom, Muriel Merbach, Jerelean K. Rang, Carmen E. Shaw, Stephen W. Smith, Mary S. Stevens, Theresa M. Weber, Carol Winborne; **Wyoming:** Gerald Bardo, Jo A. Zagar.

**Contributions Were Received in Honor of the following:**

Mr. and Mrs. George Brown's 50th Anniversary, Kathleen Cardwell's newborn baby, Lyra Crapps, Lou Heely, Anne Vanko Liva, Rebecca Massie's newborn baby, Peggy Schuler and Betty White.

**Contributions Were Received in Memory of the following:**

James Baker, Anna Margaret Baxter, Roe Von Boskirk, Martha Boucher, Angelina Flores, Lorraine Baldrige Golsan, Janice Kay Hodges, H. Louis Hollingsworth, Helene Horiis, Allen McHose, Luvinia Montgomery, Henry H. Strickland, Frances Townsend, Homer Ulrich and Cecil Williams.

There were also 517 donations less than \$25.

**1991-92 MTNA Foundation Trustees**

<b>President</b>	Karl Bruhn
Margaret Lorince	Ray Cramer
<b>Treasurer</b>	Ruth Edwards
L. Rexford Whiddon	Margaret Ott
<b>Secretary</b>	Robert J. Elias
James C. Norden	(Ex Officio)

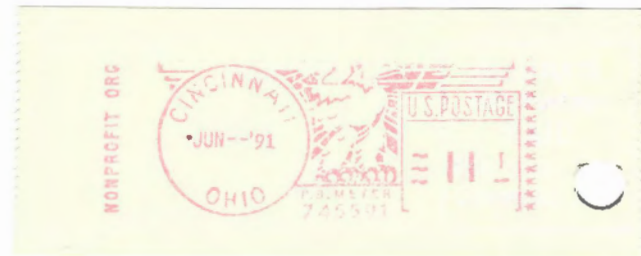
Please send contributions and address all correspondence to:

Director  
 MTNA Foundation  
 617 Vine St., Suite 1432  
 Cincinnati, OH 45202-2434

This Newsletter is being distributed to MTNA Foundation contributors and other friends and supporters of the foundation. It was prepared by staff members at MTNA National Headquarters.



The MTNA Foundation  
 617 Vine Street, Suite 1432  
 Cincinnati, OH 45202-2434



Gloria G. Ritt  
 8770 E. Baker  
 Tucson, AZ 85710

Music Teacher Income Survey Order Form

I enclose a check for the following:

<i>Title</i>	<i>Quantity</i>	<i>Prices</i>	<i>Total</i>
<i>The MTNA Foundation National Survey Of Independent Music Teacher Income And Lesson Fees</i>	_____	<i>MTNA member/nonmember \$11.00/15.00</i>	\$ _____

*Postage and Handling*  
 For 1 copy add \$2.50  
 Two or more copies add \$3.50

\$ \_\_\_\_\_

**TOTAL AMOUNT ENCLOSED \$** \_\_\_\_\_  
 Please make checks payable to MTNA Foundation


**The MTNA Foundation**

---

**The MTNA Foundation**  
**National Survey of**  
**Independent Music Teacher**  
**Income and Lesson Fees**

---

MTNA Member Price \$11.00  
 Non-Member Price \$15.00



Please send my order to:  
 Name \_\_\_\_\_ Membership # \_\_\_\_\_  
 Address \_\_\_\_\_  
 City, State, Zip \_\_\_\_\_

Mail Orders to:  
 MTNA Foundation Publications  
 617 Vine Street, Suite 1432, Cincinnati, OH 45202-2434

At the suggestion of the MTNA leadership, American Music Teacher is publishing a pictorial of the artwork that has been donated by the states to decorate national headquarters.

What we need from you is a sentence or two about the artwork donated by your state. Please include, if known, the medium used (i.e. watercolor, fabric, pastels, etc.) and why the particular piece was selected to represent your state. We want to include a photo of all art that we've received to date, so we may not be able to use all of the information you supply.

Unfortunately, because the suggestion was made after the deadline, we don't have much time to pull together the necessary information.

Please send the information to me as quickly as possible. The deadline is October 6, 1999.

Thank you for your assistance with this important project.

Marcie Gerrietts Lindsey  
MTNA Director of Publications  
American Music Teacher Managing Editor  
phone: (513) 421-1420  
fax: (513) 421-2503  
mlindsey@mtna.org

***Darcy Falk Art Quilts***

3217 North Dyer Street  
Flagstaff, AZ 86004  
E-mail: dlf@caliban.math.nau.edu  
520/526-5440

11/17/98

Invoice:  
Arizona Music Teachers Association  
Phoenix, Arizona

For the art quilt entitled "Landscape" \$300.00

Due on Receipt of Invoice

Thank you for your interest in my work

A handwritten signature in cursive script, reading "Darcy Falk", with a long horizontal flourish extending to the right.



ARIZONA  
"The Grand Canyon of the Colorado River"

Arizona's three periods are the Indian supremacy, the Spanish occupation and the American period. One seventh of the Indian population of the U.S.A. is centered in Arizona. The Gadsden Purchase of 1854 gave this territory to the United States and it was admitted to the Union as the 48th state in 1912. Reclamation of desertlands through dams is extensive. One million, two hundred and forty six thousand acres are artificially watered. It is first in copper.

Population: 1,752,122. Area: 113,956 square miles.  
Nicknames: Grand Canyon State; Copper State. Flower: Saguaro; Cactus Blossom. Motto: Ditat Deus (God Enriches). NASM Schools: 2.

PRELUDE

Arizona State Music Teachers Association    Founded 1928

Ms. Beth Hanley, President  
6501 East Calle Del Media  
Scottsdale, Arizona 85251  
  
(602) 947-0653

Ms. Evelyn Cope, Editor  
2733 West Rose Lane  
Phoenix, Arizona

Current Membership: 183

State Dues: \$8.00  
Amount in Treasury:  
Approximately \$1,100

Attendance, 1971:  
68 total

1971 Convention: Tempe  
1972 Convention: Tucson

PROGRAMS

Auditions--  
High school: 17.  
College: 8.

Arizona Study Program--  
The Arizona Study Program is an organization of Grade Year requirements in music study and an important area of the requirements of the State Association for the accreditation of private music teachers. The purpose of this teacher accreditation is to recognize excellence in teaching and to give the public a basis for selecting qualified music teachers. State Accreditation is demanding. The overall purpose of the study program is to assure the continuing development of the highest quality of all phases of musicianship in student pianists, the establishment of good study habits and concentration which will carry over to all learning situations.

Arizona continued

The pupils in the Arizona Study Program are divided into "A", "B", and "C" groups to make possible a meaningful Program for all students, regardless of wide variation in abilities and work habits. The private teacher determines the category that the student is put into by the amount of work the student has accomplished during the year.

Each student in the Study Program does not study the same material. Requirements are very general, allowing the teacher a wide latitude in choice so the selection may be geared to the needs of the individual students. The study of music involves more than the mere training of fingers. The study of Theory is necessary and basic to good musicianship. An evaluation is made in the spring and an adjudicator passes or fails the student on his technic and solo work and gives an evaluation. Evaluation by adjudicators from the faculties of the Music Departments of our State Universities and Colleges is a learning experience.

PROBLEMS

At present our most difficult problem is the attempt of the Scottsdale Finance Director to license all private teachers.

PROJECTIONS

We plan to take advantage of the commissioning program which we believe will attract composers and enrich all areas currently encompassed in our growing association.

450 15995-4 N AZ 07 N P R  
MRS KENNETH M HANLEY  
6501 E CALLE DEL MEDIA  
SCOTTSDALE AZ 85251

*Richard H. ...  
Executive Board  
Date: Dec 23*

OFFICIAL JOURNAL OF THE MUSIC TEACHERS NATIONAL ASSOCIATION  
**the American Music Teacher**

ONE DOLLAR

JANUARY 1977

**MTNA CONSTITUTION CHANGES PROPOSED BY THE NATIONAL EXECUTIVE BOARD  
TO BE VOTED ON BY THE ACTIVE MEMBERS OF MTNA  
AT THE BUSINESS MEETING AT THE NATIONAL CONVENTION  
ATLANTA, GEORGIA, MARCH 27-31, 1977.**

**ARTICLE III — MEMBERSHIP**

Section 1. Membership classifications in the Association are: Active, Associate, Life, Student, Sustaining, Patron, and Convention.

**ARTICLE IV — OFFICERS**

Section 2. All officers are elected from the membership of the Executive Board at the national meeting of the odd-numbered years by a majority vote of said Board.

**ARTICLE V — EXECUTIVE BOARD**

Section 1. The Executive Board consists of:

- (A) Two members-at-large, elected in a manner prescribed in the Bylaws, representing the general membership of the Association on the Executive Board, for terms of four years each.
- (D) The Immediate Past President, The Presidents and Immediate Past Presidents of Divisional Organizations, the Chairman or presiding officer of Subject-Area Sections, the Chairman of the Advisory Council on Materials, the Executive Secretary (ex-officio without vote), the Chairmen of the Development Commission, Certification Board, High School Student Auditions and College Student Auditions, Accordion and Independent Teachers Forum.

**ARTICLE X — AMENDMENTS**

This Constitution may be amended upon the recommendation of the Executive Board at any annual business meeting by a two-thirds vote of the Active members present and voting or by mail ballot. Written notice of the proposed amendments must be submitted to the membership at least four weeks in advance.

**CHANGE TO READ:**

Section 1. Membership classifications in the Association are: Active, Associate, Life, Student, Sustaining, and Patron.

**CHANGE TO READ:**

Section 2. All officers are elected from **past or present** members of the Executive Board at the national meeting of the odd-numbered years by a majority vote of said Board.

**CHANGE TO READ:**

- (A) **Four** members-at-large, elected in a manner prescribed in the Bylaws, representing the general membership of the Association on the Executive Board, for terms of four years each.
- (D) **The MTNA Administrative Committee**, The Presidents and Immediate Past Presidents of Divisional Organizations, the Chairman or presiding officer of Subject-Area Sections, the Chairman of the Advisory Council on Materials, the Executive **Director** (ex-officio without vote), the Chairmen of the Development Commission, Certification Board, High School Student Auditions and College Student Auditions, and Independent **Music** Teachers Forum.

**CHANGE TO READ:**

This Constitution may be amended upon the recommendation of the Executive Board at any annual business meeting by a two-thirds vote of the Active members of MTNA present and voting or by mail ballot. Written notice of the proposed amendments must be submitted to the membership of MTNA at least four weeks in advance **of the business meeting, or in case of a mail ballot, deadline for receipt of votes must be not less than four weeks and such deadline must be clearly stated on the ballot.**

---

---

# MTNA NATIONAL EXECUTIVE BOARD

---

**Margaret Adrian**, Route 1, Indian Echoes, Montello, Wisconsin 53949—Member at Large from East Central Division (1980)

**Jeanne Baldy**, 1293 Hall Ave., W. St. Paul Minnesota 55118—Member at Large from West Central Division (1978), 612-224-0595

**Winifred Bedford**, 3413 Meredith, Dallas, Texas 75211—Member at Large from South Central Division (1980)

**Dorothy Bloomingdale**, 1930 Lakehurst Drive, Olympia, Washington 98501—elected Member at Large by National Executive Board (1975-1977) 206-943-0665

**Gertrude Brown**, 5126 Bradley Blvd., Chevy Chase, Maryland 20015—elected Member at Large by National Executive Board (1975-1977) Home: 301:652-5205 Work: 301-365-5300 Ex. 65

**Celia Mae Bryant**, 560 Parrington Oval, University of Oklahoma, Norman, Oklahoma 73069—elected Member at Large by National Executive Board (1975-1977) Home: 402-329-2724 School: 405-325-4326

**Joseph Brye**, Department of Music, Oregon State University, Corvallis, Oregon 97331—Past President Northwest Division (1978) Home: 503-753-6095 Work: 503-754-1061

- Max Camp**, Department of Music, University of South Carolina, Columbia, South Carolina 29208—Past-President Southern Division (1978)
- Richard Cass**, Music Department, University of Missouri—4420 Warwick Blvd. Kansas City, Mo. 64111, Chairman Piano Section (1977)
- Donald Chittum**, Philadelphia College of the Performing Arts, 250 South Broad Street, Philadelphia, Pennsylvania 19102—Past President Eastern Division (1978) Work: 215-545-6200
- R.E.L. (Ed) Chumbley**, 520 Alhambra Circle, Coral Gables, Florida 33134—elected Member at Large by membership (1975-1977) Home: 305-444-8966
- Mary Elizabeth Clark**, P.O. Box 1826, Boulder, Co. 80302—Member at Large for West Central Division (1980)
- Paul Cooper**, The Shepherd School of Music, Rice University, Houston, Texas 77001—elected Member at Large by National Executive Board (1975-1977) Home: 713-723-0996, Work: 713-527-8101 ext. 3493
- Eleanor Conley**, 323 So. Jefferson, Casper, Wyoming 82601—Member at Large from Northwest Division (1978) 307-237-2406
- Nadine Dresskell**, Music Department, Arizona State University, Tempe, Arizona 85281—elected Member at Large by National Executive Board (1977)
- Willis F. Ducrest**, Music Department, University of Southwestern Louisiana, Lafayette, Louisiana 70501—elected Member at Large by National Executive Board (1977) Home: 318-984-4371 Work: 318-233-3850 Ex. 238
- J. Wilgus Eberly**, Music Department, Texas Woman's University, Denton, Texas 76204—President, South Central Division (1978) Home: 817-387-1356 Work: 817-387-8422
- Julio Esteban**, Peabody Conservatory of Music, Baltimore, Maryland, 21202—elected Member at Large by National Executive Board (1977) Home: 301-728-3265 Work: 301-837-0600
- Eugene Evans**, Music Department, Northeastern Junior College, Sterling, Colorado 80751—Past President West Central Division (1978) Home: 303-522-3954 Work: 303-522-6600
- Beulah B. Ford**, 2737 E. 4510 So., Salt Lake City, Utah 84117—Chairman, High School Auditions (1977) 801-277-3872
- Henry Gibson**, 280 Hancock Street, Tiffin, Ohio 44883—Chairman, Certification Board (1980) 419-447-8285
- Beth Hanley**, 6501 E. Calle Del Media, Scottsdale, Arizona 85251—President Southwest Division (1978) 602-947-0653
- Jean Hull**, 2405 Hampshire Rd., Lansing, Michigan 48910—Past President East Central Division (1978) and Chairman Independent Music Teachers Forum (1977), 517-482-9735
- Suzanne Hynek**, 1300 West Anthony Road, Wheeling, Illinois 60090—President East Central Division (1978) Home: 312-537-0358
- Despy Karlas**, Music Department, University of Georgia, Athens, Georgia 30601—Member at Large from Southern Division (1978) Home: 404-548-1269 Work: 404-542-3737
- Richard Kauffman**, 11125 Magnolia Drive, Cleveland, Ohio 44106—Elected by National Executive Board as Member at Large (1977) Home: 216-231-3208, Work: 212-421-5809
- Tinka Knopf**, Peabody Conservatory of Music, Baltimore, Maryland 21202—Chairman Collegiate Artist Competition (1977) School: 301-837-0600, Home: 301-323-8148
- Margaret Lorince**, Creative Arts Center, West Virginia University, Morgantown, W. Virginia 26506—President Eastern Division (1978) Home: 304-599-1262 Work: 304-293-4842
- Charles Lutton**, Suite 405, State National Bank Plaza, Evanston, Illinois 60201—Chairman Advisory Council on Materials, Home: 312-295-1186, Work: 312-864-1005
- Carolyn Maxwell**, 1245 Kalmia, Boulder, Colorado 80302—elected by Membership at Large (1979) Home: 303-443-1603
- Frank McGinnis**, Music Department, California State University, Northridge, California 91324—elected Member at Large from Southwest Division (1980)
- Sigfred Matson**, Music Dept., Mississippi State College for Women, Columbus, Mississippi 39701—President Southern Division (1978)
- Allen I. McHose**, P.O. Box 247, Naples, New York 14512—elected by National Executive Board as Member at Large (1977) 716-374-6435 Winter, 351 La Granada, Green Valley, Arizona 85614
- Thomas McKenney**, 1224 Lake Lane, Columbia, Missouri 65203—Chairman Theory-Composition Section (1977) Home: 314-445-7205 Work: 314-882-3679
- Blaise Montandon**, School of Music, 3342 Casa Rosa, Corpus Christi, Texas 78411—elected Member at Large by National Executive Board (1977) Home: 512-852-1586
- Jane Moore**, 44 Beverly Drive, Tacoma, Washington 98499—Member at Large for Northwest Division (1980)
- John Norman**, Music Department, College of the Desert, P.O. Box 726, Palm Desert, California 92260—Past President Southwest Division (1978) Home 714-346-8696 Work: 714-346-8041 Ex. 278
- Ylida Novik**, 4805 Grantham Avenue, Chevy Chase, Maryland 20015—Member at Large from Eastern Division (1978) Home: 301-654-5466 Work: 202-676-6245
- Tom O'Brien**, 2393 S. W. Park Place, Portland, Oregon 97205 elected Member at Large by membership (1977) Home: 503-656-0262 Work: 503-227-5220
- Joan Parkerson**, 99 W. Cooke Road, Columbus, Ohio 43214—elected Member at Large by membership (1979) Home: 614-268-6007
- Frank Pearson**, Music Department, Dickinson State College, Dickinson, North Dakota 58601—President West Central Division (1978) Home: 701-225-6231 Work: 701-227-2305
- Ludwig Sheffield**, 21 Guion St., Pleasantville, New York 10570—Member at Large for Eastern Division (1980)
- Richard Skyrn**, 1922 Everett Street, Caldwell, Idaho 83605—President Northwest Division (1978) Home: 208-459-9474 Work: 205-459-5227
- Jean Stark**, 1012 West Sugnet Road, Midland, Michigan 48640—Member at Large from East Central Division (1978) 517-835-4523
- Ronald Stetzel**, Box 428, Southeastern Louisiana University, Hammond, Louisiana 70404—Past President South Central Division (1978) Home: 504-345-4336 Work: 504-345-1400 ext. 40
- Robert V. Sutton**, Department of Music, University of Massachusetts, Amherst, Massachusetts 01002—elected Member at Large by National Executive Board (1977) Home: 413-549-6710 Work: 413-545-2227
- Jonathon Sweat**, Music Dept., Millsapps College, Jackson Mississippi 39202—Member at Large from Southern Division (1980)
- Robbie Tye**, 11 Colonial Drive, Texarkana, Arkansas 75501—Member at Large from South Central Division (1978) 501-774-5770
- Budd A. Udell**, National Executive Secretary (ex officio member) 408 Carew Tower, Cincinnati, Ohio 45202
- Betty Walker**, 18 Sibley Place, Rochester, New York 14607—Accordion Section Chairman (1977) Home: 716-271-7044 Work: 716-442-4560



S  
T  
R  
I  
N  
G  
S



PAUL ROLLAND, Chairman

**Paul Rolland**, Violinist, is Professor of Music and Chairman of the String Division of the University of Illinois, Urbana. Rolland is a founding member and Past President of the American String Teachers Association, and its editor for ten years. He is well known on the American scene as a teacher, clinician and organizer of national and regional workshops for string teachers. He is author of numerous books, articles and pamphlets dealing with the various aspects of violin playing and teaching. His government supported University of Illinois String Research Project developed the series of 17 films, *The Teaching of Action in String Playing*, including books and records for the string teacher and student.

Formed in the Fall of 1974, the **Shepherd Quartet** has already gained national and international prominence. Tours have included Mexico, Philadelphia and Atlanta, with critical acclaim from the press. The Quartet has also recorded for CRI and is active not only in



SHEPHERD QUARTET

performing, but in directing master classes for young students. **Ronald Patterson** is First Violinist of the Shepherd Quartet and Artist Teacher of Violin at The Shepherd School of Music, as well as Concertmaster of the Houston Symphony. **Raphael Fliegel** is Second Violinist of the Shepherd Quartet and Artist Teacher of Violin at The Shepherd School of Music, and for twenty-five years was Concertmaster of the Houston Symphony. **Wayne Crouse** is Violist of the Shepherd Quartet and Artist Teacher of Viola at the Shepherd School of Music, as well as Principal Violist of the Houston Symphony. **Shirley Trepel** is Cellist of the Shepherd Quartet and Artist Teacher of Cello at The Shepherd School of Music, as well as Principal Cellist of the Houston Symphony.

B  
R  
A  
S  
S

**Irvin L. Wagner**, brass chairman for MTNA, is an associate professor at the University of Oklahoma. A native of Kansas, he received a B.S. in music education from McPherson (Kan.) College and a Master's in music literature and a Doctorate of Musical Arts, both from the Eastman School of Music. In addition to his teaching duties at OU, he is a professional trombonist, clinician, conductor, and arranger. Prior to joining the OU faculty, he taught at Louisiana State University and performed with the Baton Rouge Symphony Orchestra.

The Brass Department of the Department



UNIVERSITY OF SOUTH CAROLINA BRASS ENSEMBLE

of Music at the University of South Carolina will present a program of varied works at the 1977 National Convention. The students participating in the program make up the University of South Carolina Trombone Quartet, Trumpet Ensemble, Brass Quintet, and Horn Ensemble. Original works for the concert will be composed by three members of the Theory-Composition Faculty of the Department of Music, **Fred Teuber**, **Samuel Douglas**, and **Gordon Goodwin**. The program is being coordinated at the University of South Carolina by **G. B. Lane**, 1st Vice-President of the South Carolina Music Teachers Association, and a member of the music faculty at the University.



IRVIN L. WAGNER, Chairman

THE AMERICAN MUSIC TEACHER

MEMBER NUMBER		STATE ASSOCIATION			YEAR JOINED MTNA	
PRIMARY TEACHING AREA		SECONDARY TEACHING AREA			OTHER TEACHING AREA	
IF NAT. CERT., YEAR EXPIRES		IF NAT. CERT., YEAR EXPIRES			IF NAT. CERT., YEAR EXPIRES	
TEACHING STATUS		HIGHEST DEGREE	BIRTH YEAR	SEX	LOCAL ASSOC. OR DIST.	
RENEWAL STATEMENT		MTNA DUES				
		STATE DUES				
		ENTER LOCAL DUES				
IF DUAL MEMBERSHIP, NAME OF SPOUSE						
PHONE NUMBER		PAYMENT DUE BY			AMOUNT ENCLOSED	

ENTER OR CORRECT ALL DATA AND RETURN ENTIRE FORM WITH PAYMENT.  
MEMBERSHIP CARD MUST BE VALIDATED AND WILL BE RETURNED TO YOU. DO NOT DETACH CARD.

## MUSIC TEACHERS NATIONAL ASSOCIATION, INC.

Your membership card signifies that you are an active member of the MTNA — oldest and most respected professional teacher's association and America's select musical community. It indicates that you are proud of your significant contribution to the musical culture of our country.

### Membership Card

MUSIC TEACHERS NATIONAL ASSOCIATION, INC.

Established 1876

MEMBER NO.



NOT  
VALID  
UNTIL  
STAMPED

PAID TO

*Nadine Driscoll*  
PRESIDENT

1982

*Music Teachers National Association*

# *Scholarship Foundation, inc.*

## THE FOUNDATION STORY

EVERYTHING YOU SHOULD KNOW ABOUT YOUR FOUNDATION

### *What is the Scholarship Foundation?*

1. The Foundation, incorporated in 1972, exists solely for educational purposes. It was founded by MNA, the oldest professional music association in America. Although by far the most members are teachers of piano and related subjects, membership includes all categories of musical involvement.
2. For some years MNA has held annual local, state and divisional auditions, in categories from elementary through college, and in various instrumental, vocal, and compositional areas, culminating in national auditions, with substantial cash awards ranging from \$100 to \$1500. Expenses incurred in operating these expanding programs dedicated to encouraging and helping our highly talented young people, including awards, travel help in some cases, reimbursement for judges, etc., have become a budget burden for MNA.
3. It is in response to the above that the Scholarship Foundation was founded, with the expectation that accrued interest on gifts to the Foundation be used to implement and assist MNA, the parent association, in its scholarship auditions and awards programs. A principal concern of the Foundation, therefore, is to aid in providing scholarships, awards, prizes and travel expenses for students participating in MNA annual auditions.

### *What are our objectives?*

1. To raise sufficient capital so that the accrued annual interest will be sufficient to carry out and to expand the stated purposes of the Foundation. A first goal of \$100,000, set for early spring of 1982, marks a gratifying achievement for all MNA members. Our challenge now is to set even higher goals for our own membership, and to greatly expand our efforts by attracting and soliciting substantial support from outside the association. Realistically, we should aim for a capital investment of \$1,000,000, a figure which would assure us of sufficient earned income to underwrite not only all of the present programs, but to establish and maintain new scholarship programs in all areas throughout the future.
2. To free MNA of the burden of underwriting expenses incurred in Foundation promotion and operation.
3. To involve all MNA members in a sustaining drive for funds.
4. Although no formal campaign among the MNA membership is being con-

### *Objectives, continued*

ducted, EVERY EFFORT MUST BE CONTINUED AT THE NATIONAL, DIVISIONAL, STATE AND LOCAL LEVELS TO INCREASE THE NUMBER OF MINA PARTICIPANTS IN THE FOUNDATION. The decision to encourage participation of our own members is a basic and sound one: we know that if every member of MINA demonstrates his own concern, interest, and SUPPORT, the Foundation will succeed beyond our fondest hope. Further, this procedure is the key to obtaining contributions from outside the membership.

### *Are we a division of MTNA?*

No. Although all affiliations with MINA are regarded as being of the same family, the Scholarship Foundation, like many of the state associations, is a separately chartered and incorporated body, with its own board of trustees and corporate membership. All funds which accumulate for the Foundation are separate and distinct from MINA budgetary or operational control and must be directed towards the purposes stated in the Foundation Charter.

### *Why are we needed?*

To assure the everlasting continuance and expansion of MINA Auditions, making possible the annual awarding of prizes and scholarships. At present, MINA Auditions are supported with general funds from the MINA budget, which constitutes an annual expense of over \$35,000 to the membership. Continued growth of the Scholarship Foundation will eventually eliminate this sum from MINA budget appropriations, thereby releasing substantial funds for other meaningful uses and for the benefit of the MINA membership.

### *Are Foundation awards now available?*

Certainly. A program of grants to state associations to help defray travel expenses of student audition winners was established in 1975-76. In the succeeding years the earned income from invested capital has been sufficient to cover the awards for the Student Composition contest as well as the state student travel grants. The Foundation not only continues to underwrite the Student Composition awards, but gives travel grants to an increasing number of states which are qualified and which make proper application.

### *Why is it important to become an active contributor to the Foundation?*

The Scholarship Foundation is by far the most challenging and far-reaching project in the history of MINA. The benefits to highly talented young musicians who are the students of today's teachers, and to generations of such musicians yet to come, will be guaranteed for all time. Involvement in this most ambitious and worthwhile project is an exceptional opportunity to all who teach and hold membership in MINA. It is also a challenging responsibility.

### *What contributions are acceptable?*

Although a minimum contribution of \$10 has been used since 1972 for establishing guidelines governing percentile tabulations of state contributors, gifts of any amount are always welcome.

### *Why are contributions so important to the Foundation's program?*

1. Each state's share of student travel grant allotments for the current

*Contributions, continued*

year is determined by its total percentile of \$10 minimum contributions received at the national office through December 31. Contributions received after this date apply towards the next year's tabulation.

2. Although \$10 units are the basis for tabulation purposes, smaller gifts are combined in \$10 amounts so as to receive state credit.
3. Larger gifts are automatically credited in \$10 unit values. Separate member names are not required in order to receive credit per unit.
4. ALL former \$10 minimum contributors since the Foundation drive began in 1972 automatically receive cumulative state credit for tabulation purposes.
5. ALL REPEAT gifts, even when credited to the same donor, are also applied to the state's record.
6. Blanks to simplify contribution procedure always appear in THE AMERICAN MUSIC TEACHER.

*What is the procedure for applying for a state student travel grant?*

1. Application must be made by the state president or other official prior to December 1 of each year. Applications cannot be accepted if postmarked after December 1; they should be sent to the Foundation Vice President, L.K. Maesch, 9933 Oak Ridge Drive, Sun City, AZ 85351.
2. Each application must be accompanied by a Xerox copy of the current state budget, or other evidence, showing an amount set aside for student travel aid.
3. If a grant is awarded, but not used during the current year, it may be held for use during a subsequent year. It may not, however, be used for any purpose other than that for which it was originally awarded.

*How are state student travel grant allotments tabulated?*

Tabulations are based on 1) total number of units, 2) total percentile of units since 1972, and 3) percentile of units for the current year only.

*What part of a contribution actually goes into the Scholarship Foundation?*

All of it. Scholarship Foundation officers serve without salary, and no contributions from MTNA members are used for promotion or travel expenses.

*Are contributions tax deductible?*

Yes, every donor will receive full credit for his gift, for tax deductible purposes. But there is an extra bonus, too: satisfaction and pride in supporting such a worthwhile undertaking that will help talented students now and in the future.

*Is it possible to make a bequest to the Scholarship Foundation?*

Definitely. Details of a bequest should be worked out with the assistance of a lawyer, and possible advice of any Foundation officer.

*May contributions from those who are not members of MTNA be accepted?*

Definitely. It is now time to expand our efforts outside the MTNA member-

*Contributions, continued*

ship. Individual members as well as state and local associations are encouraged to contact their division Foundation chairmen, or the Foundation President, of potential support from friends of music everywhere -- parents of students, local music dealers and publishers, the business community, and other foundations.

*What fund-raising suggestions for state and local associations can you suggest?*

1. INTENSIVE TELEPHONE CAMPAIGNS. Your state officers should keep a record of contributors. THEN APPOINT AN ACTIVE COMMITTEE TO CONTACT THE NON-CONTRIBUTORS.
2. ARTICLES IN STATE AND LOCAL ASSOCIATION NEWSLETTERS, accompanied by contribution forms.
3. ASK THE NATIONAL OFFICE FOR AS MANY COPIES OF THIS BROCHURE AS YOU MAY NEED FOR DISTRIBUTION AT YOUR STATE CONVENTIONS.
4. Brief but spirited REMINDERS at local meetings, with more detailed reports and question-and-answer periods at state conventions.
5. BENEFIT PERFORMANCES by local artists, a group of artist teachers, or young professionals.
6. ENCOURAGE YOUR LOCAL SYMPHONY TO SPONSOR A BENEFIT PERFORMANCE AT THEIR YOUNG PEOPLE'S CONCERT.
7. WORKSHOPS can also become Foundation benefit programs.
8. A SUGGESTION: For all benefit programs, teachers who sell \$10 or more tickets may be listed as contributors to the Foundation.

*How do we equate Foundation needs with other fund-raising activities?*

From one of our members:

"WE GIVE TO THE HEART FUND, THE CANCER FUND, MENTAL HEALTH, ETC. WHY NOT GIVE TO SUPPORT THE ARTS? HEALTH IS EVERYBODY'S BUSINESS. MUSIC IS OURS. LET'S KEEP MUSIC HEALTHY BY SUPPORTING THE MTNA SCHOLARSHIP FOUNDATION."

*Where should contributions to the MTNA Scholarship Foundation be sent?*

MTNA Scholarship Foundation  
2113 Carew Tower  
Cincinnati, OH 45202

---

# MTNA

---

---

STATEMENT OF  
RECOMMENDED  
PROFESSIONAL  
STUDIO  
POLICIES

---



A Publication of

---

MUSIC TEACHERS NATIONAL ASSOCIATION

Revised 1987

These general guidelines are recommended by MTNA. Each independent music teacher may establish additional policies and procedures which will meet the needs of his or her studio.

### **The Goal**

- is to develop the musical potential of each student by regular instruction that presents balanced repertory, progressive technique and music theory

### **The Teacher**

- recognizes and respects the uniqueness of each student and attempts to encourage strengths while addressing problem areas
- establishes tuition to be paid in advance by the month or term
- determines the number of lessons per month or term providing for holidays and the teacher's commitments
- clearly communicates his/her policy for make-up lessons and enforces that policy in a fair manner
- requires notice of a minimum of one month when parents terminate lessons
- terminates lessons when the student is irregular in attendance, repeatedly fails to prepare assigned material or is disruptive
- maintains membership in professional music organizations and strives for musical growth
- maintains regular communication with parents and/or student concerning student progress through evaluations, parent conferences and informal conversations

### **The Student**

- arrives at each lesson punctually well-prepared and with all necessary materials
- schedules daily practice without distractions
- takes advantage of performance opportunities provided by the teacher and obtains the teacher's consent for all other performances

- acknowledges that the study of music holds an important place among all extra-curricular activities

### **The Parents**

- support the fulfillment of the student's responsibilities and encourage progress
- provide an instrument in the best possible condition and a suitable location for uninterrupted practice
- make inquiry regarding the musical background and qualifications of the prospective teacher
- fulfill financial obligations for tuition and music materials in a timely manner or discuss alternative arrangements with the teacher

*Member teachers abide by the MTNA Code of Ethics*

### **MTNA Code of Ethics**

We, the members of Music Teachers National Association, having dedicated ourselves to the advancement of musical knowledge and education, recommend the following principles of ethical practice as standards of professional conduct.

#### **Responsibilities To Our Public**

- Members shall maintain the highest standard of moral conduct, professional conduct and personal integrity.
- Members shall exhibit the highest standard of expertise by maintaining their professional abilities in their fields of teaching and performing.
- Members shall maintain and increase the prestige of the art of teaching and shall promote the teaching of music as a culturally enriching profession.
- When asked, members shall assist those seeking guidance in selecting an independent teacher by suggesting the names of two or more teachers in the community. The final choice shall be made by the parent and student.

- Members shall refrain from making exaggerated claims or misleading statements concerning their teaching qualifications. Advertising copy shall be dignified, strictly truthful and representative of the art of music and its responsibility to the community.

#### **Responsibilities To Our Students**

- The relationship between teacher and student shall be established, maintained and terminated with appropriate professional, honorable and ethical actions representative of the profession and Music Teachers National Association.
- Members are responsible for encouraging, guiding and developing the musical potential of each student as fully as possible and for avoiding specific promises or guarantees that lead a student to false hopes of a career in music.
- Members shall encourage pupils to participate in community music activities.

#### **Responsibilities To Our Colleagues**

- Members shall maintain a professional attitude and shall act with integrity in regard to colleagues in their profession.
- Members shall participate as fully as possible in activities of Music Teachers National Association.
- Members shall provide professional assistance to one another when such assistance is requested.
- Members shall respect the rights of colleagues when speaking of other teachers' work and/or students and shall avoid conflict with the instruction of a student's regular teacher when serving as an interim instructor.
- Members will claim credit for the achievement of a student only after the completion of six months study with the respective teacher.

Prepared by  
Music Teachers National Association  
under the supervision of the  
MTNA Independent Music Teachers Forum  
441 Vine St., Suite 2113  
Cincinnati, Ohio 45202-2982