

ARIZONA

MOTOR VEHICLE CRASH FACTS

2015



2015 Motor Vehicle Crash Facts for the State of Arizona

Prepared by:
The Arizona Department of Transportation
Transportation Systems Management and Operations

Publication Date: June 1, 2016



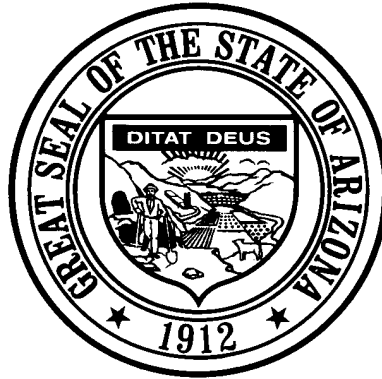
This publication is an annual statistical review of the motor vehicle crashes in the State of Arizona for the calendar year 2015. The results are compiled from Arizona Traffic Crash Reports submitted to the Arizona Department of Transportation by state, county, city, tribal, and other law enforcement agencies. Specific inquiries regarding the data in this report should be directed to:

The Arizona Department of Transportation
Transportation Systems Management and Operations
Traffic Records Section
206 South 17th Ave. MD 064R
Phoenix, AZ 85007-3213

E-mail: azcrashfacts@azdot.gov

In order to provide the most current information, preliminary data is utilized when necessary. For this reason, previous or future reports may differ slightly and we encourage you to refer to the latest issue of Motor Vehicle Crash Facts.

This issue as well as previous issues of this publication may be viewed and downloaded from ADOT's Web Site at:
<http://www.azdot.gov/mvd/Statistics/arizona-motor-vehicle-crash-facts>



Douglas A. Ducey
Governor

Arizona Department of Transportation

John S. Halikowski
Director

State Transportation Board

Joseph E. La Rue – District 1
Chairman

Deanna L. Beaver – District 6
Vice Chairman

Members

Jack Sellers – District 1
Michael S. Hammond – District 2
William F. Cuthbertson – District 3
Steve Stratton – District 4
Arlando S. Teller – District 5

OVERVIEW

Section 1: – Highlights and Historical Trends 1

Section 2: – Geographic Location..... 9

Section 3: – Crash Descriptions 17

Section 4: – Safety Devices 23

Section 5: – Motor Vehicle and Driver Descriptions 26

Section 6: – Alcohol Related Crashes..... 33

Section 7: – Pedestrian and Pedalcyclist Crashes 42

Section 8: – Motorcycle (MC) Crashes 48

Acknowledgements 58

2015 Arizona Crash Facts Summary

Table of Contents

Section 1: Highlights and Historical Trends	1
Arizona Crash Facts Summary and Comparison.....	2
Arizona at a Glance – 2015.....	2
Licensed Drivers, Motor Vehicle Registration and Crash History in Arizona.....	3
Historical Trends – Arizona and the United States	3
Statewide Economic Loss Due to Motor Vehicle Crashes.....	4
Average Economic Cost per Incident.....	4
Traffic Crashes in Arizona by Year.....	5
Victims of Motor Vehicle Crashes.....	6
Arizona’s 2015 Estimated Population.....	6
Victims of Motor Vehicle Crashes (Arizona Residents Only).....	6
Vehicle Miles Traveled.....	7
Arizona vs. U.S. Fatality Rate.....	7
Traffic Fatalities by Geographic Region.....	7
Traffic Injuries by Geographic Region.....	7
Holiday Crash Statistics.....	8
Section 2: Geographic Location	9
Crash Severity by First Harmful Event Statewide.....	10
Crashes by County.....	10
Crash Severity by First Harmful Event in Urban Areas.....	11
Crash Severity by First Harmful Event in Rural Areas.....	11
Analysis by Jurisdiction.....	12
Total Fatalities by County for 2014 and 2015.....	15
Urban and Rural Crashes by Day of Week.....	16
Urban and Rural Fatal Crashes by Day of Week.....	16
All Urban and Rural Crashes vs. Urban and Rural Fatal Crashes by Month.....	16
Section 3: Crash Descriptions	17
Manner of Collision in Multi-Vehicle Crashes.....	18
Lighting Conditions.....	18
Weather Conditions.....	18
Road Surface Conditions.....	19
Roadway Grade.....	19
Roadway Alignment.....	19
All Crashes vs. Fatal Crashes by Time of Day - Weekdays.....	20
All Crashes vs. Fatal Crashes by Time of Day - Weekends.....	20
Crashes by Day of Week.....	21
Fatal Crashes by Day of Week.....	21
All Crashes vs. Fatal Crashes by Month.....	21
Crashes by Hour and Day of Week.....	22
Section 4: Safety Devices	23
Child Safety Device Usage (less than five years old).....	24
Driver Safety Device Usage.....	24
Passenger Safety Device Usage.....	24
Driver Safety Device Usage by Gender.....	25
Driver Safety Device Usage by Age.....	25
Section 5: Motor Vehicle and Driver Descriptions	26
Arizona Motor Vehicle Registrations.....	27
Motor Vehicle Crash Involvement by Vehicle Type.....	27

2015 Arizona Crash Facts Summary

Hit and Run Drivers Involved in Crashes.....	28
Gender of Drivers Involved in Crashes.....	28
License Status of Drivers Involved in Crashes.....	28
Passengers Killed and Injured by Age and Gender.....	28
Drivers and Passengers Killed and Injured by Vehicle Type.....	29
Drivers Killed and Injured by Age and Gender.....	29
Licensed Drivers in Arizona by Age.....	30
Driver Involvement by Age.....	30
Driver Violations.....	31
Driver Physical Condition.....	31
Distracted Driving Behavior.....	32
Secondary Crashes.....	32
Section 6: Alcohol Related Crashes.....	33
Economic Loss Due to Alcohol Related Crashes in Arizona for 2015.....	34
Alcohol Related Crash History.....	34
Manner of Collision in Alcohol Related Crashes.....	34
Alcohol Related Crashes by First Harmful Event.....	35
Alcohol Related Crashes by Vehicle Type.....	35
Lighting Conditions in Alcohol Related Crashes.....	36
Road Surface Conditions in Alcohol Related Crashes.....	36
Gender of Drivers Involved in Alcohol Related Crashes.....	36
Driver Involvement by Age in Alcohol Related Crashes.....	37
When Alcohol Related Crashes Occurred in 2015.....	37
Safety Device Usage for Drinking Drivers.....	37
Persons Killed and Injured in Alcohol Related Crashes.....	38
Alcohol Related Crashes by County.....	38
All Alcohol Related Crashes vs. Fatal Alcohol Related Crashes by Day of Week.....	39
All Alcohol Related Crashes vs. Fatal Alcohol Related Crashes by Month.....	39
All Alcohol Related Crashes vs. Fatal Alcohol Related Crashes - Weekdays.....	40
All Alcohol Related Crashes vs. Fatal Alcohol Related Crashes - Weekends.....	40
Alcohol Related Crashes by Hour and Day of Week.....	41
Section 7: Pedestrian and Pedalcyclist Crashes.....	42
Pedestrians Killed and Injured By Age and Gender.....	43
Pedestrian Crashes by Geographic Location.....	43
Pedestrian Crash History.....	43
Pedestrians Killed by Age and Action.....	44
Pedestrians Injured by Age and Action.....	44
Pedestrian Physical Condition in Motor Vehicle Crashes.....	44
Lighting Conditions in Pedestrian Crashes.....	45
Weather Conditions in Pedestrian Crashes.....	45
Pedalcyclists Killed and Injured by Age and Gender.....	45
Pedalcycle Crashes by Geographic Location.....	46
Pedalcycle Crash History.....	46
Lighting Conditions in Pedalcyclist Crashes.....	46
Weather Conditions in Pedalcyclist Crashes.....	46
Pedestrian Crashes by County.....	47
Pedalcyclist Crashes by County.....	47
Section 8: Motorcycle (MC) Crashes.....	48
MC Fatalities by Year.....	49
MC Registrations in Arizona.....	49
Fatality Rate per Registered MC.....	49
Percent of MC Crashes to All Crashes.....	49
MC Crashes by First Harmful Event.....	50
Lighting Conditions in MC Crashes.....	50
Road Surface Conditions in MC Crashes.....	50

2015 Arizona Crash Facts Summary

MC Crashes by Geographic Location.....	51
Operator Involvement by Age in MC Crashes.....	51
MC Operator Physical Condition.....	51
MC Operators Involved in Fatal Crashes by License Status.....	52
MC Operator’s Helmet Use.....	52
MC Passenger’s Helmet Use.....	52
MC Operators and Passengers Killed and Injured.....	53
MC Operator Violations.....	53
All MC Crashes vs. Fatal MC Crashes by Time of Day - Weekdays.....	54
All MC Crashes vs. Fatal MC Crashes by Time of Day - Weekends.....	54
All MC Crashes vs. Fatal MC Crashes by Day of Week.....	55
Alcohol Related MC Crashes vs. Fatal Alcohol Related MC Crashes by Day of Week.....	55
MC Crashes by Hour and Day of Week.....	56
MC Crashes by County.....	57
Manner of Collision in MC Crashes.....	57
Acknowledgements.....	58

2015 Arizona Crash Facts Summary

BREAKDOWN OF ALL CRASHES IN ARIZONA

TOTAL	116,609
FATAL	811
INJURY	36,139
PROPERTY DAMAGE ONLY	79,659
URBAN	94,404
RURAL	22,205
ALCOHOL RELATED	4,941
PEDESTRIAN	1,399
PEDALCYCLE	1,434
MOTORCYCLE	2,911
SINGLE VEHICLE	19,063
MULTI-VEHICLE	97,546

BREAKDOWN OF FATAL CRASHES IN ARIZONA

TOTAL	811
ALCOHOL RELATED	266
URBAN	440
RURAL	371
SINGLE VEHICLE	287
MULTI-VEHICLE	524
ALCOHOL RELATED SINGLE VEHICLE	108
ALCOHOL RELATED MULTI-VEHICLE	158

BREAKDOWN OF PERSONS KILLED AND INJURED

TYPE	KILLED	INJURED
IN ALL CRASHES	895	53,554
IN ALCOHOL RELATED CRASHES	295	3,205
IN URBAN CRASHES	471	43,426
IN RURAL CRASHES	424	10,128
SPEED RELATED*	300	21,991
USING SAFETY DEVICE	252	43,922
NOT USING SAFETY DEVICE	313	3,230
DRIVERS AGE 24 OR YOUNGER	84	8,445
DRINKING DRIVERS AGE 24 OR YOUNGER	25	395

BREAKDOWN OF CRASHES BY TIME

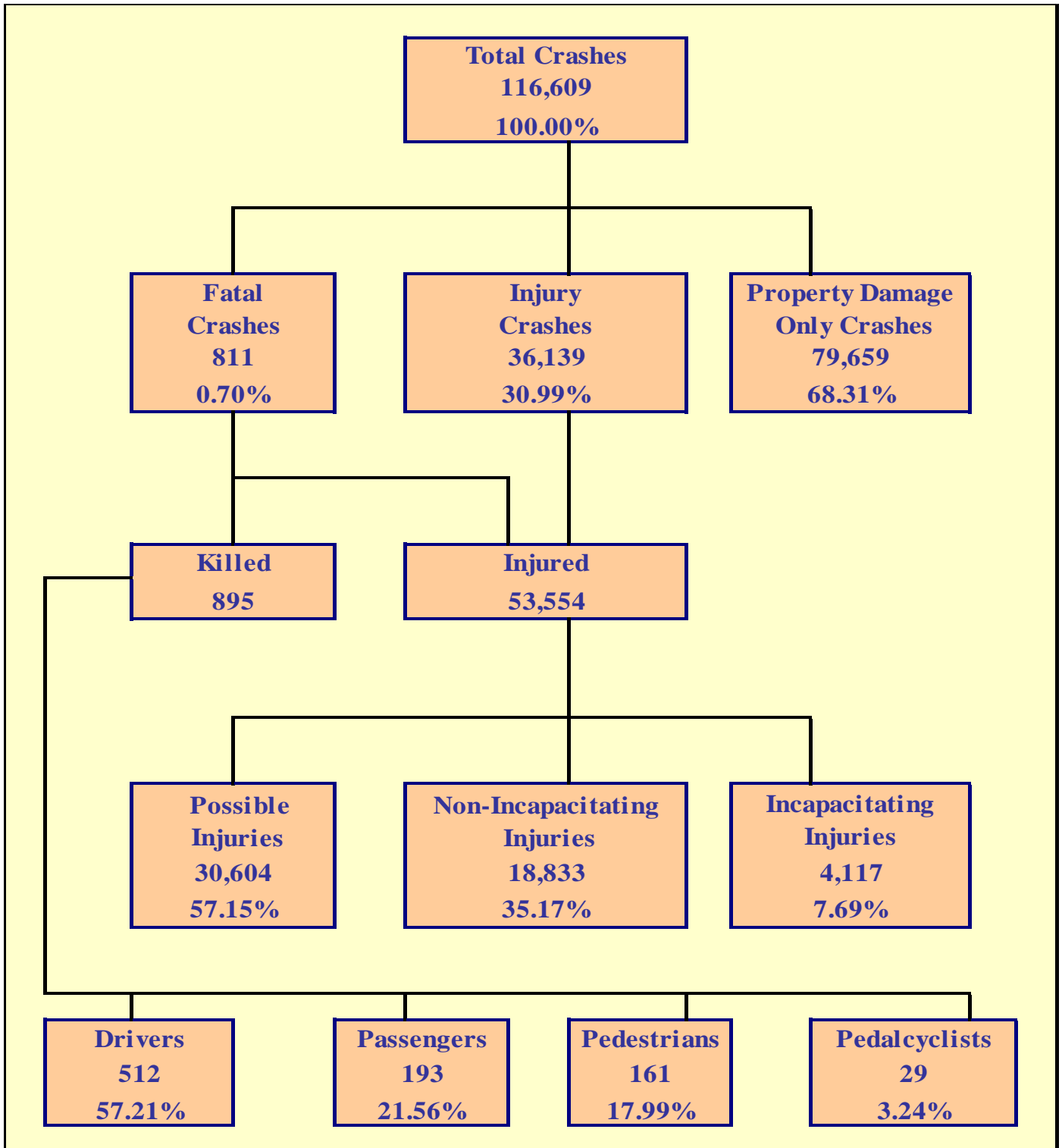
PEAK MONTH FOR ALL CRASHES	DECEMBER
PEAK DAY FOR ALL CRASHES	FRIDAY
PEAK HOUR FOR ALL CRASHES	4 PM - 5 PM
PEAK HOUR FOR FATAL CRASHES	8 PM - 9 PM
PEAK DAY FOR FATAL CRASHES	SATURDAY
PEAK DATE FOR ALL CRASHES IN 2015	JANUARY 30TH (635 CRASHES)
PEAK DATE FOR FATAL CRASHES IN 2015	OCTOBER 30TH (8 CRASHES)
PEAK HOUR FOR ALCOHOL RELATED CRASHES	2 AM - 3 AM
PEAK DAY FOR MOTORCYCLE CRASHES	SATURDAY
PEAK HOUR FOR ALL MOTORCYCLE CRASHES	3 PM - 4 PM

OTHER FACTS

MOST COMMON MANNER OF COLLISION	REAR END
MOST COMMON DRIVER VIOLATION	SPEED TOO FAST FOR CONDITIONS

*Note: These numbers represent the total number of fatalities and injuries in crashes where the violation "speed too fast for conditions" or "exceeded lawful speed" was marked on the crash form

THIS PAGE LEFT BLANK FOR PRINTING PURPOSES



Section 1: – Highlights and Historical Trends

Table 1 – 1

Arizona Crash Facts Summary and Comparison

Category	2014	2015	Percent Change
Total Crashes	109,664	116,609	6.33%
Total Fatalities	774	895	15.63%
Total Injuries	50,988	53,554	5.03%
Alcohol Related Fatalities	269	295	9.67%
Alcohol Related Injuries	3,175	3,205	0.94%
Urban Fatalities	395	471	19.24%
Urban Injuries	41,785	43,426	3.93%
Rural Fatalities	379	424	11.87%
Rural Injuries	9,203	10,128	10.05%
MC Operator and Passenger Fatalities	128	134	4.69%
MC Operator and Passenger Injuries	2,667	2,497	-6.37%
Pedestrians Fatalities	155	161	3.87%
Pedestrians Injuries	1,353	1,236	-8.65%
Pedalcyclist Fatalities	29	29	0.00%
Pedalcyclist Injuries	1,467	1,276	-13.02%
Millions of vehicle miles traveled (VMT)	62,631	*	*
Fatalities per 100 million VMT	1.24	*	*
Injuries per 100 million VMT	81.41	*	*
*The VMT figure for 2015 was not available at the time of publication.			

Arizona at a Glance – 2015

- Approximately **2.45** persons were killed each day.
- One person was killed every **9.79** hours.
- There were **146.62** persons injured every day.
- One person was injured every **9.82** minutes.
- Alcohol Related crashes accounted for **4.24%** of all crashes and **32.80%** of all fatal crashes.
- Of all alcohol related crashes, **77.90%** occurred in Urban areas and **22.10%** occurred in Rural areas, while **56.39%** of all alcohol related fatal crashes occurred in Urban areas and **43.61%** occurred in Rural areas.
- Single vehicle crashes accounted for **16.35%** of all crashes and **35.39%** of all fatal crashes.
- Of all Pedestrian crashes, **11.44%** were fatal while **1.95%** of Pedalcycle crashes were fatal.
- Crashes which occurred during daylight hours (6:00 a.m. to 6:00 p.m.) accounted for **72.5%** of all crashes.
- Motor vehicle crashes resulted in **\$3.817** billion in economic losses to Arizona.
- Children age 14 and younger accounted for **24** fatalities and **3,561** injuries in motor vehicle crashes.

Section 1: – Highlights and Historical Trends

The Nation In 2015

The population of the United States was estimated at **323,492,857** (source: www.census.gov).

An estimated * persons were killed in motor vehicle crashes in the United States.

An estimated * persons were injured in motor vehicle crashes in the United States.

*This data was not available at the time of publication (source: www.nhtsa.gov)

**Table 1 – 2
Licensed Drivers, Motor Vehicle Registration
and Crash History in Arizona**

Calendar Year	Total Crashes	Fatal Crashes	Injury Crashes	Property Damage Only Crashes	Total Persons Killed	Total Persons Injured	Total Licensed Drivers	Total Registered Vehicles
2011	103,952	756	33,221	69,975	827	49,851	4,634,405	4,855,014
2012	103,926	738	33,586	69,602	821	50,072	4,736,517	4,969,620
2013	107,552	782	34,127	72,643	849	50,426	4,826,903	5,130,780
2014	109,664	709	34,508	74,447	774	50,988	4,922,676	5,300,980
2015	116,609	811	36,139	79,659	895	53,554	5,025,811	5,487,058

**Table 1 – 3
Historical Trends – Arizona and the United States**

Calendar Year	U.S. Fatality Rate	Arizona Fatality Rate	Arizona Traffic Fatalities	Estimated Motor Vehicle Miles Traveled	Arizona Fatal Crash Rate
2011	1.10	1.39	827	59,575	1.27
2012	1.14	1.37	821	60,129	1.23
2013	1.10	1.40	849	60,586	1.29
2014	1.07	1.24	774	62,631	1.13
2015	*	*	895	*	*

Vehicle miles traveled are shown in million miles and rates per 100 million miles

*This data was not available at the time of publication

Section 1: – Highlights and Historical Trends

Statewide Economic Loss Due to Motor Vehicle Crashes

Fatalities	\$1,380,304,800
Incapacitating Injuries	\$371,641,590
Non-Incapacitating Injuries	\$491,767,296
Possible Injuries	\$655,537,680
Property Damage Only	\$918,149,634
TOTAL	\$3,817,401,000

Table 1 – 4

Estimated Economic Loss by County

County	Cost of Traffic Crashes			
	Fatalities	Injuries	PDO	Total
Apache	\$ 72,485,280	\$ 9,378,900	\$ 2,916,078	\$ 84,780,258
Cochise	\$ 26,218,080	\$ 15,308,772	\$ 11,353,110	\$ 52,879,962
Coconino	\$ 90,992,160	\$ 38,567,322	\$ 31,673,448	\$ 161,232,930
Gila	\$ 47,809,440	\$ 12,906,162	\$ 6,466,086	\$ 67,181,688
Graham	\$ 7,711,200	\$ 4,943,532	\$ 2,305,200	\$ 14,959,932
Greenlee	\$ 0	\$ 1,195,236	\$ 610,878	\$ 1,806,114
La Paz	\$ 29,302,560	\$ 6,799,014	\$ 2,939,130	\$ 39,040,704
Maricopa	\$ 630,776,160	\$ 1,067,621,046	\$ 679,515,330	\$ 2,377,912,536
Mohave	\$ 74,027,520	\$ 44,707,518	\$ 22,037,712	\$ 140,772,750
Navajo	\$ 63,231,840	\$ 14,117,004	\$ 7,999,044	\$ 85,347,888
Pima	\$ 140,343,840	\$ 166,118,526	\$ 68,937,006	\$ 375,399,372
Pinal	\$ 87,907,680	\$ 52,310,088	\$ 30,889,680	\$ 171,107,448
Santa Cruz	\$ 9,253,440	\$ 5,871,528	\$ 4,829,394	\$ 19,954,362
Yavapai	\$ 75,569,760	\$ 45,447,324	\$ 25,795,188	\$ 146,812,272
Yuma	\$ 24,675,840	\$ 33,654,594	\$ 19,882,350	\$ 78,212,784
TOTALS	\$ 1,380,304,800	\$ 1,518,946,566	\$ 918,149,634	\$ 3,817,401,000

NOTE: Cost estimates are based on a 2% increase of the 2014 National Safety Council estimates of the average cost of motor vehicle crashes, deaths, and injuries. These costs are an estimate of wage and productivity losses, medical expenses, administrative expenses, motor vehicle damage, and employer costs. A description of the National Safety Council's current cost estimating procedures may be found in the Technical Appendix of *Injury Facts*® (source: www.nsc.org/learn/safety-knowledge/Pages/injury-facts-estimating-cost-of-unintentional-injuries.aspx).

Table 1 – 5

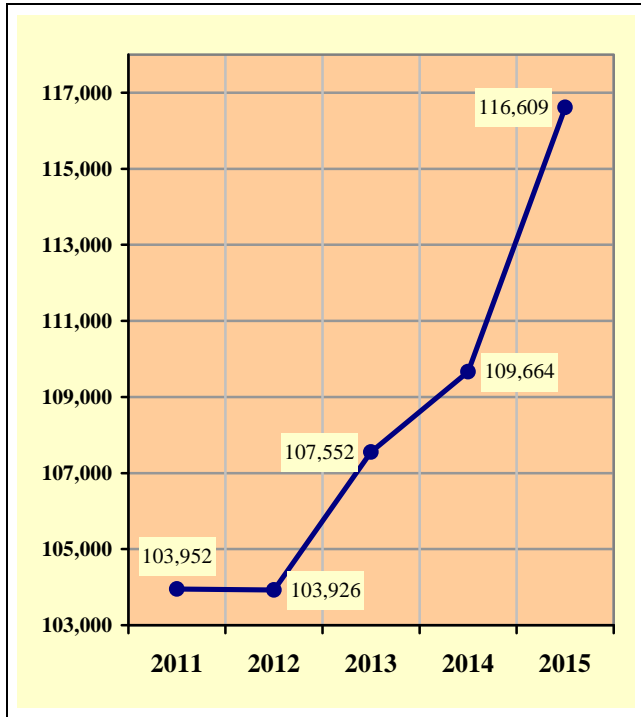
Average Economic Cost per Incident

1.	Fatality	\$1,542,240
2.	Incapacitating Injury	\$90,270
3.	Non-Incapacitating Injury	\$26,112
4.	Possible Injury	\$21,420
5.	Property Damage Only	\$11,526

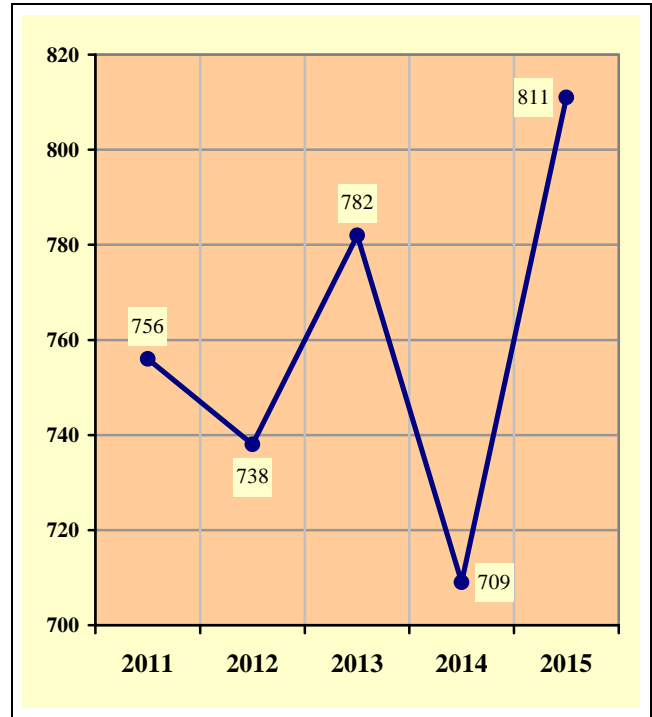
Section 1: – Highlights and Historical Trends

Traffic Crashes in Arizona by Year

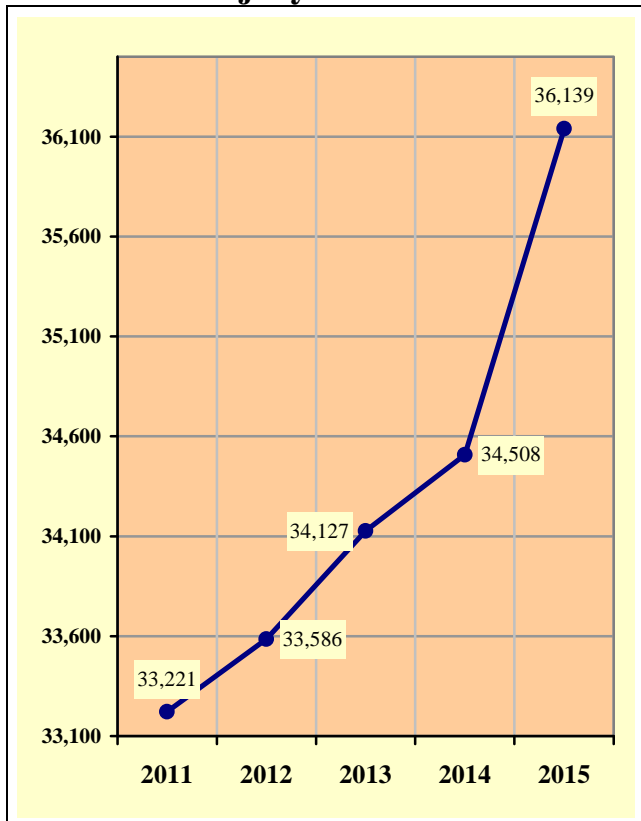
**Chart 1 – 1
Total Crashes**



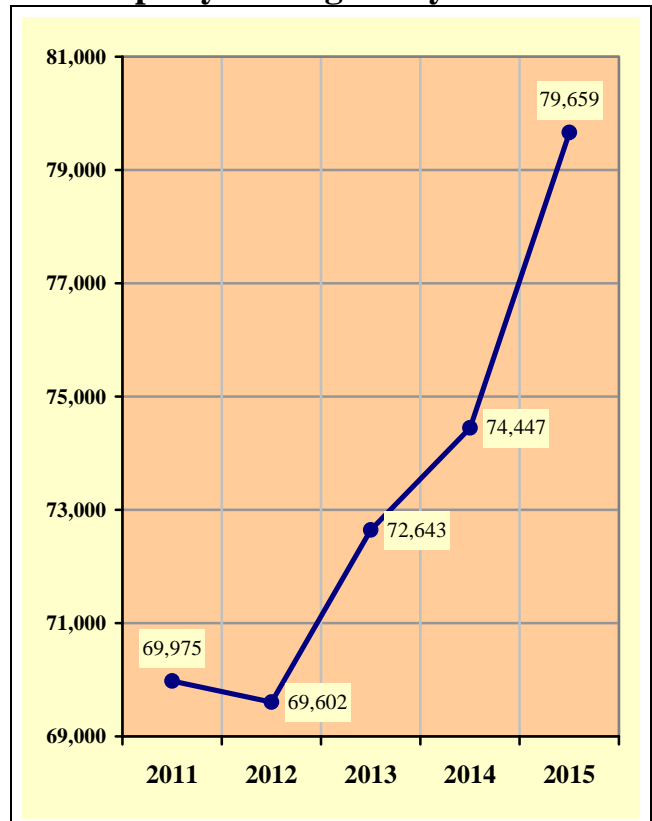
**Chart 1 – 2
Fatal Crashes**



**Chart 1 – 3
Injury Crashes**



**Chart 1 – 4
Property Damage Only Crashes**



Section 1: – Highlights and Historical Trends

**Table 1 – 6
Victims of Motor Vehicle Crashes**

Age of Victim	Persons Killed				Persons Injured			
	Total	Male	Female	Gender Unknown	Total	Male	Female	Gender Unknown
0-4	10	3	7	0	880	457	423	0
5-9	7	3	4	0	1,248	605	643	0
10-14	7	3	4	0	1,433	671	762	0
15-19	47	31	16	0	5,283	2,483	2,800	0
20-24	96	71	25	0	7,321	3,606	3,715	0
25-34	162	111	51	0	10,533	5,022	5,511	0
35-44	136	105	31	0	7,820	3,762	4,058	0
45-54	137	98	39	0	7,304	3,527	3,777	0
55-64	122	88	34	0	5,717	2,734	2,983	0
65-74	85	58	27	0	3,378	1,610	1,768	0
75 & Older	82	53	29	0	2,031	936	1,095	0
Unknown	4	1	1	2	606	253	291	62
TOTAL	895	625	268	2	53,554	25,666	27,826	62

**Table 1 – 7
Arizona’s 2015 Estimated Population**

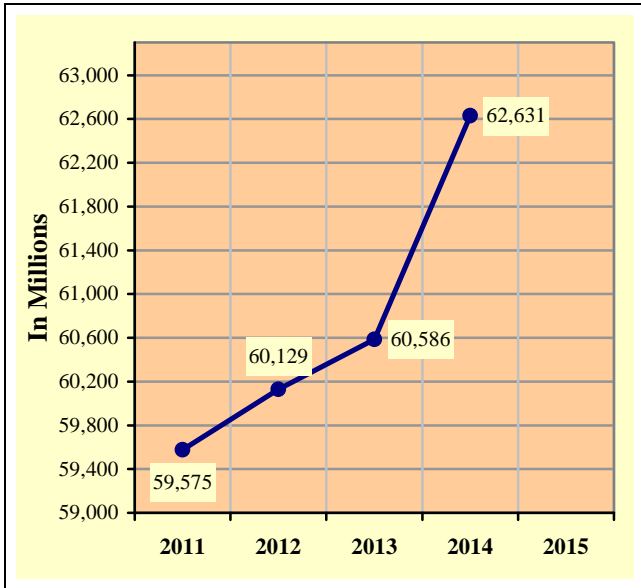
This data was not available at the time of publication (source: Arizona Department of Health Services, Health Status and Vital Statistics Section).

**Table 1 – 8
Victims of Motor Vehicle Crashes (Arizona Residents Only)**

This data was not available at the time of publication (source: Arizona Department of Health Services, Health Status and Vital Statistics Section).

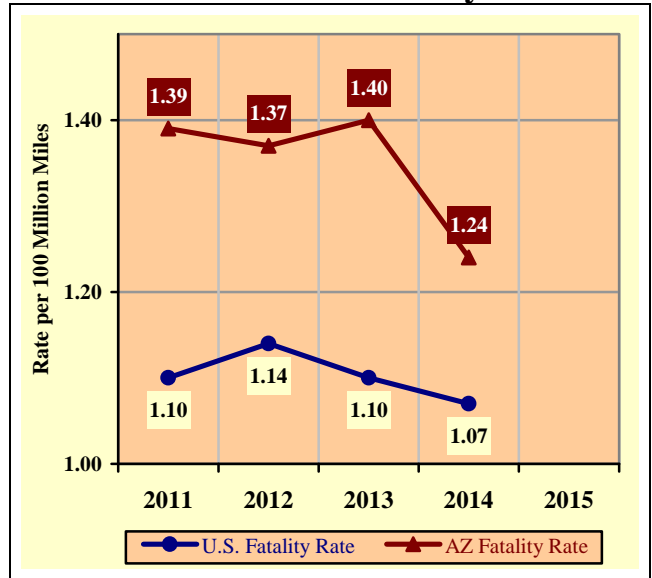
Section 1: – Highlights and Historical Trends

**Chart 1 – 5
Vehicle Miles Traveled**



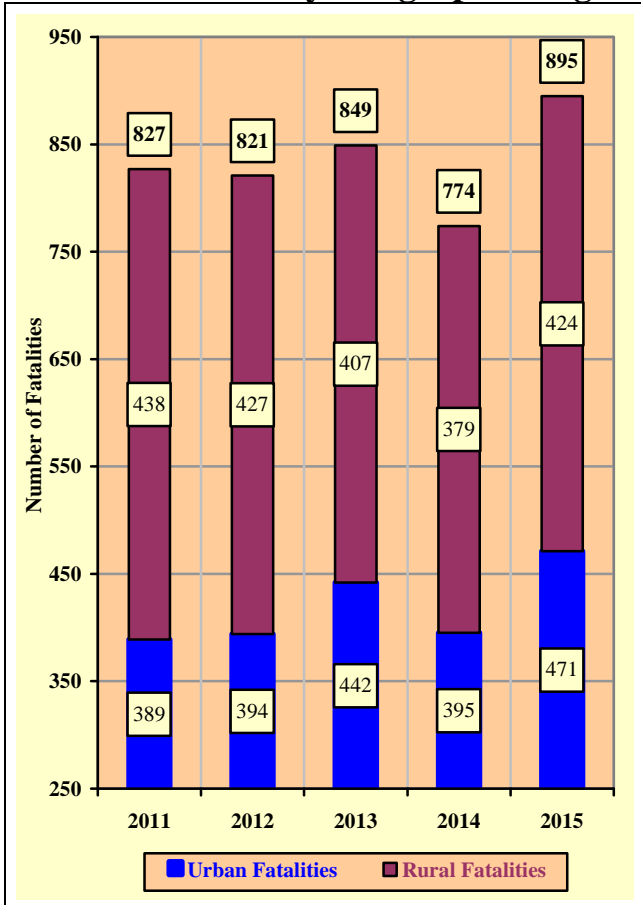
The VMT figure for 2015 was not available at the time of publication.

**Chart 1 – 6
Arizona vs. U.S. Fatality Rate**

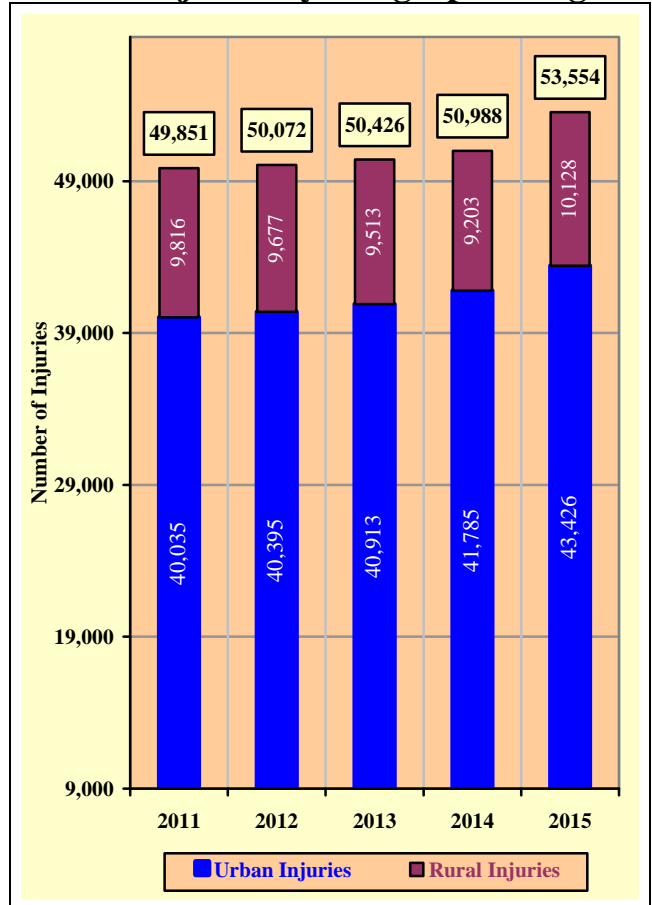


The Arizona and U.S. fatality rates for 2015 were not available at the time of publication.

**Chart 1 – 7
Traffic Fatalities by Geographic Region**



**Chart 1 – 8
Traffic Injuries by Geographic Region**



Section 1: – Highlights and Historical Trends

Table 1 – 9

Holiday Crash Statistics

Holidays such as Memorial Day, Labor Day, and Thanksgiving are regarded as three or four day weekend holidays for statistical purposes. Holidays such as Christmas, New Year’s Day, and the Fourth of July are celebrated on specific dates; which make the holiday period range from two to five days in length.

Holiday fatality statistics are based on fatal crashes occurring from 6:00 p.m. on the last working day prior to the holiday through 5:59 a.m. the day following the holiday period. Example: Thanksgiving fatalities are counted from Wednesday evening at 6:00 p.m. through 5:59 a.m. of the following Monday.

2015 Holidays	Beginning at 6:00 p.m.	Ending at 5:59 a.m.	Number of Days	Fatal Crashes	Persons Killed	Alcohol Related Fatal Crashes	Alcohol Related Fatalities
New Year’s Day	Wednesday	Monday	5	7	7	4	4
	12/31/2014	1/5/2015					
Memorial Day	Friday	Tuesday	4	11	12	6	6
	5/22/2015	5/26/2015					
July 4th	Thursday	Monday	4	11	11	8	8
	7/2/2015	7/6/2015					
Labor Day	Friday	Tuesday	4	10	10	3	3
	9/4/2015	9/8/2015					
Thanksgiving Day	Wednesday	Monday	5	10	16	1	1
	11/25/2015	11/30/2015					
Christmas Day	Thursday	Monday	4	4	6	2	2
	12/24/2015	12/28/2015					

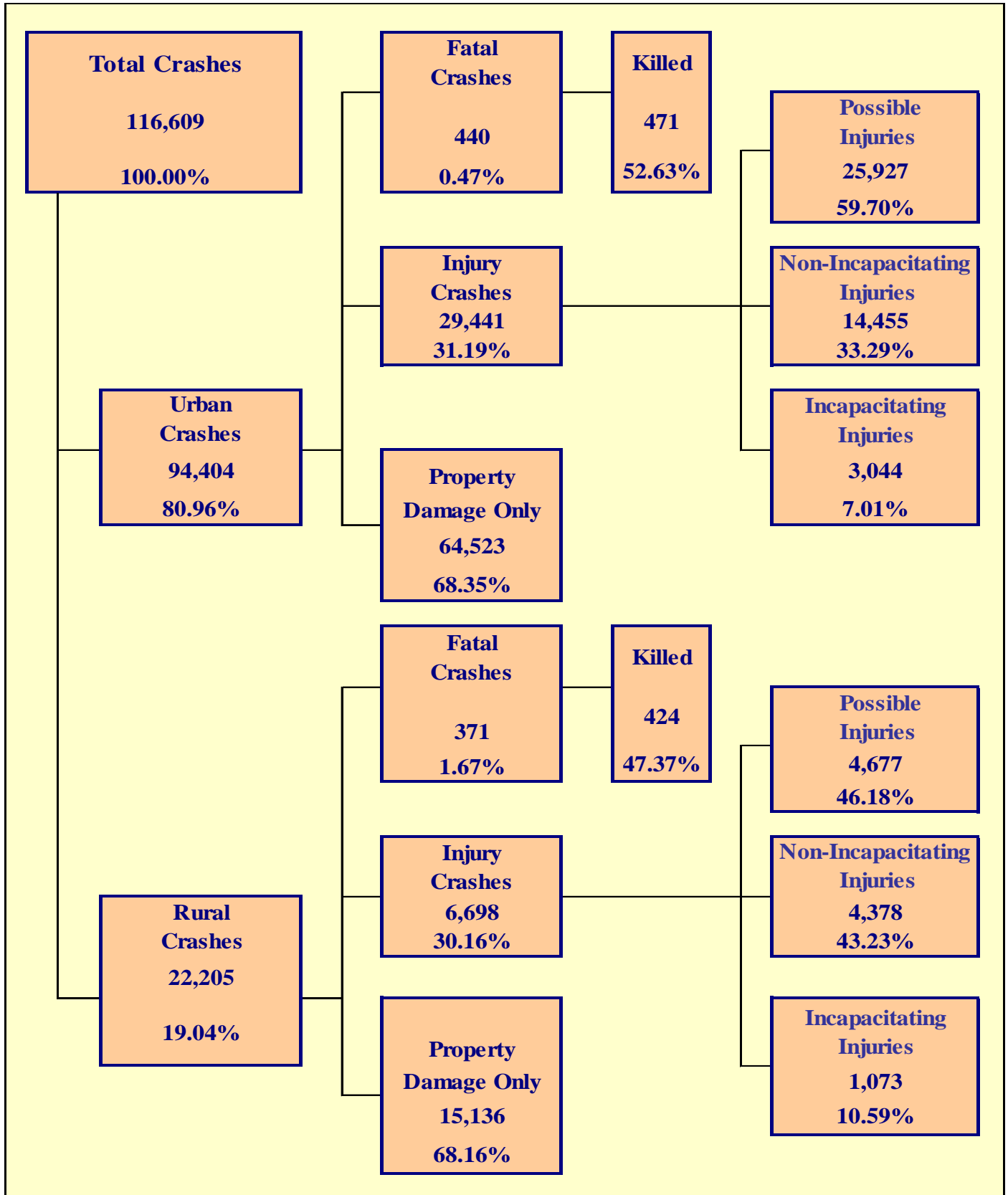
Fatal Crashes by Year	New Year’s Day	Memorial Day	July 4th	Labor Day	Thanksgiving	Christmas Day	Total
2011	5	8	9	7	12	6	47
2012	14	7	5	15	11	4	56
2013	3	9	15	8	11	1	47
2014	3	7	7	4	14	7	42
2015	7	11	11	10	10	4	53

Persons Killed	New Year’s Day	Memorial Day	July 4th	Labor Day	Thanksgiving	Christmas Day	Total
2011	5	9	11	8	14	6	53
2012	14	8	6	18	11	4	61
2013	4	10	16	8	14	1	53
2014	3	8	9	6	18	8	52
2015	7	12	11	10	16	6	62

Number of Days	New Year’s Day	Memorial Day	July 4th	Labor Day	Thanksgiving	Christmas Day	Total
2011	4	4	4	4	5	4	25
2012	4	4	2	4	5	5	24
2013	5	4	5	4	5	2	25
2014	2	4	4	4	5	5	24
2015	5	4	4	4	5	4	26

Section 2

Geographic Location



Section 2: – Geographic Location

Fatal Crashes in Arizona (811) accounted for 0.70% of all crashes, Injury Crashes (36,139) accounted for 30.99%, and Property Damage Only (PDO) Crashes (79,659) accounted for 68.31%.

**Table 2 – 1
Crash Severity by First Harmful Event Statewide**

First Harmful Event Type	Number of Crashes				Number of Persons	
	Total	Fatal	Injury	PDO	Killed	Injured
Collision with Motor Vehicle in Transport	74,804	304	22,350	52,150	354	34,491
Overturning	2,617	123	1,640	854	138	2,304
Collision with Pedestrian	962	152	770	40	154	837
Collision with Pedalcyclist	1,087	28	949	110	29	977
Collision with Animal	1,862	2	176	1,684	2	224
Collision with Fixed Object	11,385	168	3,371	7,846	183	4,186
Collision with Non-fixed Object*	4,521	12	443	4,066	13	544
Vehicle Fire or Explosion	348	1	5	342	1	6
Other Non-collision**	688	6	119	563	6	147
Unknown	18,335	15	6,316	12,004	15	9,838
TOTAL	116,609	811	36,139	79,659	895	53,554
*Includes Collision with Parked Vehicles, Trains, Railway Vehicles, and Work Zone Equipment						
**Includes Vehicle Immersion, Jackknife, and Cargo Loss or Shift						

**Table 2 – 2
Crashes by County**

County	Number of Crashes				Number of Persons	
	Total	Fatal	Injury	PDO	Killed	Injured
Apache	436	39	144	253	47	270
Cochise	1,335	15	335	985	17	499
Coconino	3,668	53	867	2,748	59	1,295
Gila	844	25	258	561	31	385
Graham	300	5	95	200	5	150
Greenlee	88	0	35	53	0	39
La Paz	387	18	114	255	19	189
Maricopa	85,269	381	25,933	58,955	409	38,569
Mohave	2,858	45	901	1,912	48	1,308
Navajo	1,008	30	284	694	41	437
Pima	10,048	87	3,980	5,981	91	5,761
Pinal	3,918	51	1,187	2,680	57	1,749
Santa Cruz	566	5	142	419	6	201
Yavapai	3,307	42	1,027	2,238	49	1,472
Yuma	2,577	15	837	1,725	16	1,230
TOTAL	116,609	811	36,139	79,659	895	53,554

Section 2: – Geographic Location

Table 2 – 3
Crash Severity by First Harmful Event in Urban Areas

First Harmful Event Type	Number of Crashes				Number of Persons	
	Total	Fatal	Injury	PDO	Killed	Injured
Collision with Motor Vehicle in Transport	62,556	179	18,690	43,687	194	28,505
Overturning	777	31	544	202	34	647
Collision with Pedestrian	817	116	666	35	118	723
Collision with Pedalcyclist	944	17	833	94	17	852
Collision with Animal	270	0	20	250	0	24
Collision with Fixed Object	7,219	85	2,081	5,053	95	2,516
Collision with Non-fixed Object*	3,300	8	323	2,969	9	380
Vehicle Fire or Explosion	121	0	2	119	0	3
Other Non-collision**	336	2	61	273	2	73
Unknown	18,064	2	6,221	11,841	2	9,703
TOTAL	94,404	440	29,441	64,523	471	43,426
*Includes Collision with Parked Vehicles, Trains, Railway Vehicles, and Work Zone Equipment						
**Includes Vehicle Immersion, Jackknife, and Cargo Loss or Shift						

Table 2 – 4
Crash Severity by First Harmful Event in Rural Areas

First Harmful Event Type	Number of Crashes				Number of Persons	
	Total	Fatal	Injury	PDO	Killed	Injured
Collision with Motor Vehicle in Transport	12,248	125	3,660	8,463	160	5,986
Overturning	1,840	92	1,096	652	104	1,657
Collision with Pedestrian	145	36	104	5	36	114
Collision with Pedalcyclist	143	11	116	16	12	125
Collision with Animal	1,592	2	156	1,434	2	200
Collision with Fixed Object	4,166	83	1,290	2,793	88	1,670
Collision with Non-fixed Object*	1,221	4	120	1,097	4	164
Vehicle Fire or Explosion	227	1	3	223	1	3
Other Non-collision**	352	4	58	290	4	74
Unknown	271	13	95	163	13	135
TOTAL	22,205	371	6,698	15,136	424	10,128
*Includes Collision with Parked Vehicles, Trains, Railway Vehicles, and Work Zone Equipment						
**Includes Vehicle Immersion, Jackknife, and Cargo Loss or Shift						

While Urban Crashes in Arizona (94,404) accounted for 80.96% of all crashes, they accounted for 54.25% of all Fatal Crashes (440) occurring in 2015.

While Rural Crashes in Arizona (22,205) accounted for 19.04% of all crashes, they accounted for 45.75% of all Fatal Crashes (371) occurring in 2015.

Section 2: – Geographic Location

Table 2 – 5

Analysis by Jurisdiction

COUNTIES Cities	Number of Crashes				No. of Persons		Alcohol Related		
	Total	Fatal	Injury	PDO	Killed	Injured	Crashes	Killed	Injured
Apache County	398	38	135	225	46	249	47	24	44
Eagar	19	1	5	13	1	14	3	1	3
St. Johns	9	0	2	7	0	5	1	0	2
Springerville	10	0	2	8	0	2	0	0	0
TOTAL	436	39	144	253	47	270	51	25	49

Cochise County	609	11	153	445	13	251	27	6	18
Benson	77	1	18	58	1	23	8	0	2
Bisbee	10	0	5	5	0	9	1	0	1
Douglas	95	0	16	79	0	22	2	0	1
Huachuca City	4	0	1	3	0	1	0	0	0
Sierra Vista	516	2	137	377	2	180	24	0	12
Tombstone	3	0	0	3	0	0	0	0	0
Willcox	21	1	5	15	1	13	0	0	0
TOTAL	1,335	15	335	985	17	499	62	6	34

Coconino County	1,421	40	354	1,027	44	597	54	4	47
Flagstaff	1,876	9	424	1,443	9	578	85	6	42
Fredonia	0	0	0	0	0	0	0	0	0
Williams	105	1	20	84	1	28	0	0	0
Page	83	2	25	56	2	40	9	1	4
Sedona	183	1	44	138	3	52	7	0	2
TOTAL	3,668	53	867	2,748	59	1,295	155	11	95

Gila County	522	20	167	335	26	232	30	6	31
Globe	71	1	27	43	1	47	7	1	7
Hayden	0	0	0	0	0	0	0	0	0
Miami	23	1	9	13	1	19	0	0	0
Payson	228	3	55	170	3	87	10	1	2
Winkelman	0	0	0	0	0	0	0	0	0
TOTAL	844	25	258	561	31	385	47	8	40

Graham County	145	3	49	93	3	81	10	1	3
Pima	4	0	2	2	0	3	0	0	0
Safford	108	2	30	76	2	42	9	2	5
Thatcher	43	0	14	29	0	24	0	0	0
TOTAL	300	5	95	200	5	150	19	3	8

Greenlee County	54	0	23	31	0	25	5	0	3
Clifton	34	0	12	22	0	14	2	0	1
Duncan	0	0	0	0	0	0	0	0	0
TOTAL	88	0	35	53	0	39	7	0	4

Section 2: – Geographic Location

Table 2 – 5

Analysis by Jurisdiction

COUNTIES Cities	Number of Crashes				No. of Persons		Alcohol Related		
	Total	Fatal	Injury	PDO	Killed	Injured	Crashes	Killed	Injured
La Paz County	321	15	94	212	15	154	11	2	12
Parker	25	0	6	19	0	10	1	0	2
Quartzite	41	3	14	24	4	25	0	0	0
TOTAL	387	18	114	255	19	189	12	2	14

Maricopa County	6,522	63	2,014	4,445	70	3,002	229	22	172
Avondale	1,219	5	356	858	6	517	46	4	19
Buckeye	521	4	160	357	4	233	35	1	16
Cave Creek	79	1	22	56	1	25	7	0	4
Chandler	4,170	12	1,213	2,945	12	1,703	160	2	100
El Mirage	373	0	109	264	0	151	8	0	5
Gila Bend	44	3	11	30	3	17	0	0	0
Gilbert	2,835	10	711	2,114	11	1,056	92	3	46
Glendale	5,007	22	1,468	3,517	24	2,202	186	13	124
Goodyear	948	5	283	660	5	430	39	0	34
Mesa	6,910	26	2,101	4,783	26	2,946	246	6	151
Paradise Valley	237	2	70	165	2	96	9	0	6
Peoria	2,214	11	670	1,533	12	952	94	7	44
Phoenix	39,054	178	12,325	26,551	192	18,901	1,326	61	843
Scottsdale	4,013	14	1,294	2,705	15	1,873	209	3	124
Surprise	1,260	4	320	936	4	468	52	1	27
Tempe	8,353	14	2,408	5,931	14	3,437	310	5	173
Tolleson	475	2	130	343	2	189	17	0	18
Wickenburg	117	0	18	99	0	22	2	0	2
Youngtown	50	1	18	31	1	24	4	0	4
Guadalupe	333	1	74	258	2	111	4	2	4
Litchfield Park	55	1	22	32	1	32	4	0	3
Queen Creek	296	2	80	214	2	106	8	1	5
Fountain Hills	153	0	45	108	0	63	10	0	12
Carefree	31	0	11	20	0	13	1	0	1
TOTAL	85,269	381	25,933	58,955	409	38,569	3,098	131	1,937

Mohave County	1,244	33	411	800	36	629	84	7	66
Kingman	534	1	152	381	1	216	23	1	18
Lake Havasu City	508	6	157	345	6	216	33	2	26
Bullhead City	554	5	177	372	5	241	38	2	22
Colorado City	18	0	4	14	0	6	0	0	0
TOTAL	2,858	45	901	1,912	48	1,308	178	12	132

Section 2: – Geographic Location

Table 2 – 5

Analysis by Jurisdiction

COUNTIES Cities	Number of Crashes				No. of Persons		Alcohol Related		
	Total	Fatal	Injury	PDO	Killed	Injured	Crashes	Killed	Injured
Navajo County	552	22	162	368	29	264	56	17	54
Holbrook	69	5	16	48	9	30	6	1	4
Show Low	205	0	56	149	0	74	4	0	6
Snowflake	54	1	14	39	1	20	2	0	0
Taylor	25	0	9	16	0	9	2	0	1
Winslow	24	2	7	15	2	14	5	1	2
Pinetop-Lakeside	79	0	20	59	0	26	3	0	1
TOTAL	1,008	30	284	694	41	437	78	19	68

Pima County	3,599	26	1,144	2,429	26	1,670	219	11	143
South Tucson	103	0	40	63	0	56	5	0	5
Tucson	4,905	53	2,428	2,424	57	3,526	429	23	302
Sahuarita	213	1	64	148	1	91	8	1	5
Oro Valley	500	2	147	351	2	194	22	2	12
Marana	728	5	157	566	5	224	15	3	11
TOTAL	10,048	87	3,980	5,981	91	5,761	698	40	478

Pinal County	2,000	29	612	1,359	33	906	94	14	70
Casa Grande	816	7	227	582	8	325	52	2	38
Coolidge	173	5	51	117	5	87	13	1	5
Eloy	104	2	26	76	3	37	10	1	3
Florence	69	1	23	45	1	30	3	0	3
Kearny	6	0	0	6	0	0	2	0	0
Mammoth	2	0	0	2	0	0	0	0	0
Superior	13	0	4	9	0	6	2	0	1
Apache Junction	431	4	157	270	4	219	12	1	7
Maricopa	304	3	87	214	3	139	20	2	9
TOTAL	3,918	51	1,187	2,680	57	1,749	208	21	136

Santa Cruz County	320	3	87	230	3	126	23	1	17
Nogales	244	2	53	189	3	72	6	0	4
Patagonia	2	0	2	0	0	3	0	0	0
TOTAL	566	5	142	419	6	201	29	1	21

Yavapai County	1,562	33	506	1,023	40	761	85	7	62
Clarkdale	21	0	4	17	0	5	4	0	2
Cottonwood	270	0	86	184	0	120	12	0	8
Jerome	7	0	0	7	0	0	1	0	0
Prescott	691	5	188	498	5	255	29	2	18
Prescott Valley	460	3	157	300	3	208	26	2	19
Chino Valley	130	0	45	85	0	63	10	0	5
Camp Verde	144	0	35	109	0	54	8	0	4
Dewey-Humboldt	22	1	6	15	1	6	1	0	1
TOTAL	3,307	42	1,027	2,238	49	1,472	176	11	119

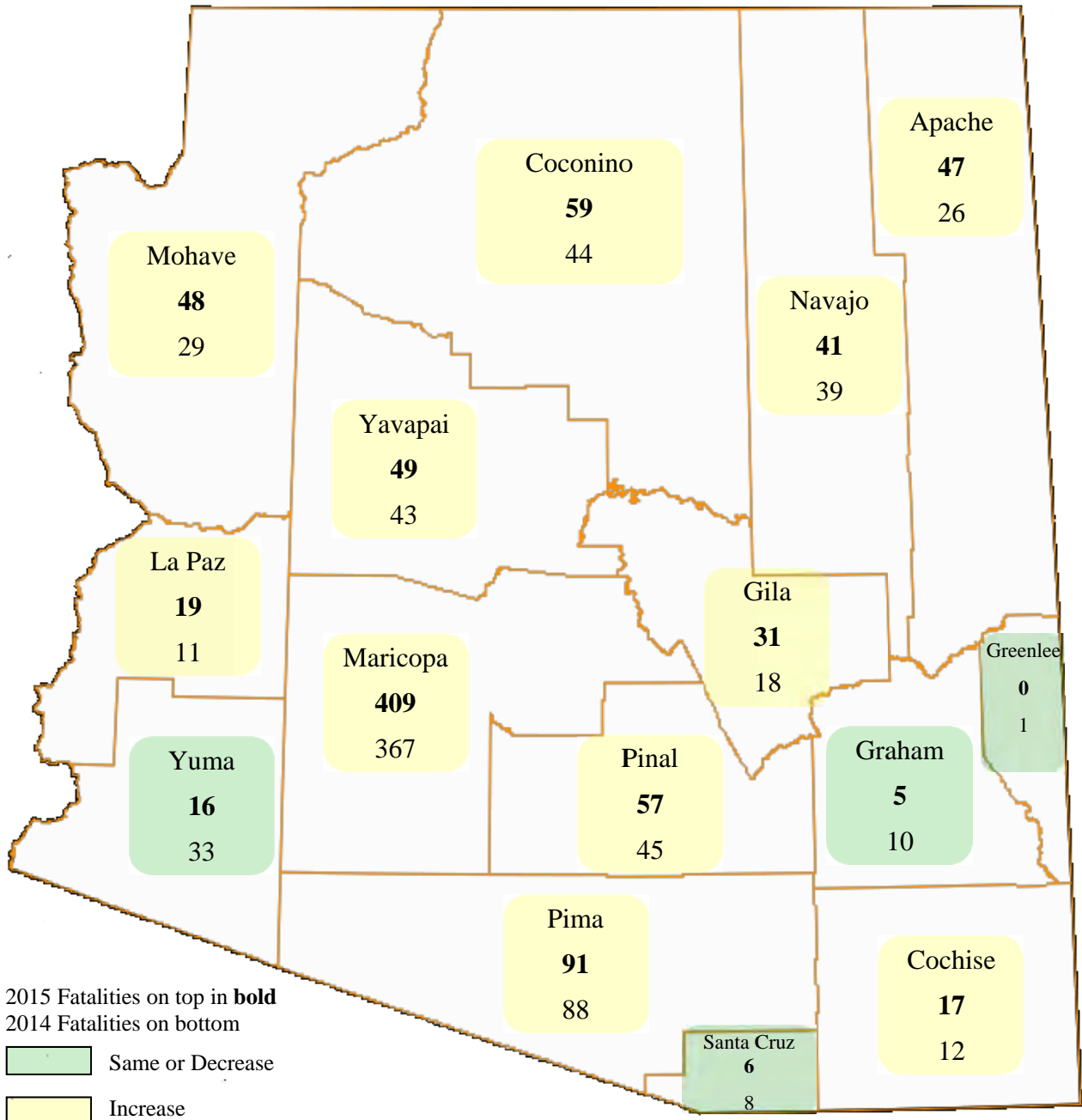
Section 2: – Geographic Location

Table 2 – 5
Analysis by Jurisdiction

COUNTIES Cities	Number of Crashes				No. of Persons		Alcohol Related		
	Total	Fatal	Injury	PDO	Killed	Injured	Crashes	Killed	Injured
Yuma County	732	9	247	476	9	378	33	4	19
Somerton	27	1	10	16	1	12	0	0	0
Yuma	1,674	5	550	1,119	6	792	85	1	51
Wellton	10	0	1	9	0	1	0	0	0
San Luis	134	0	29	105	0	47	5	0	0
TOTAL	2,577	15	837	1,725	16	1,230	123	5	70

Note: Some individual city data may be incomplete due to lack of timely reporting or changes in crash reporting procedures.

Total Fatalities by County for 2014 and 2015



Section 2: – Geographic Location

Chart 2 – 1

Urban and Rural Crashes by Day of Week

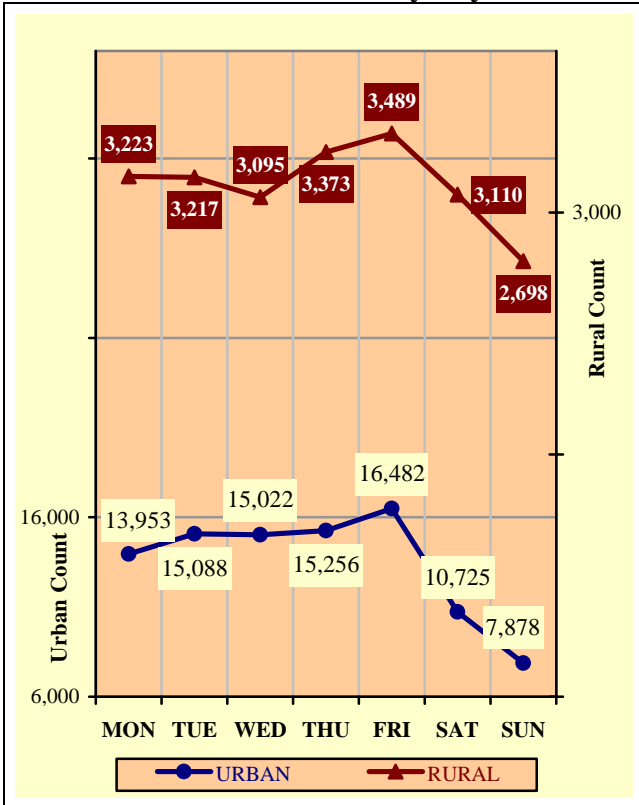


Chart 2 – 2

Urban and Rural Fatal Crashes by Day of Week

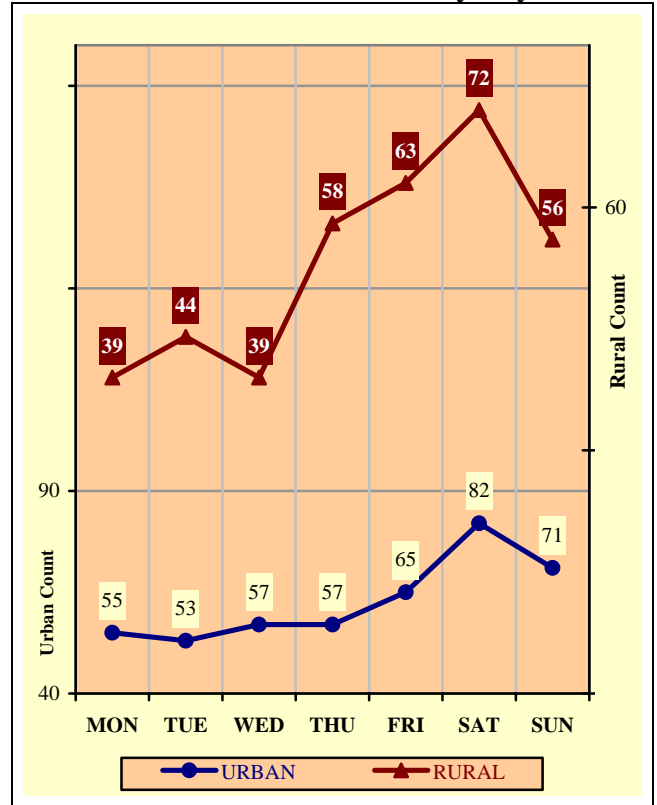
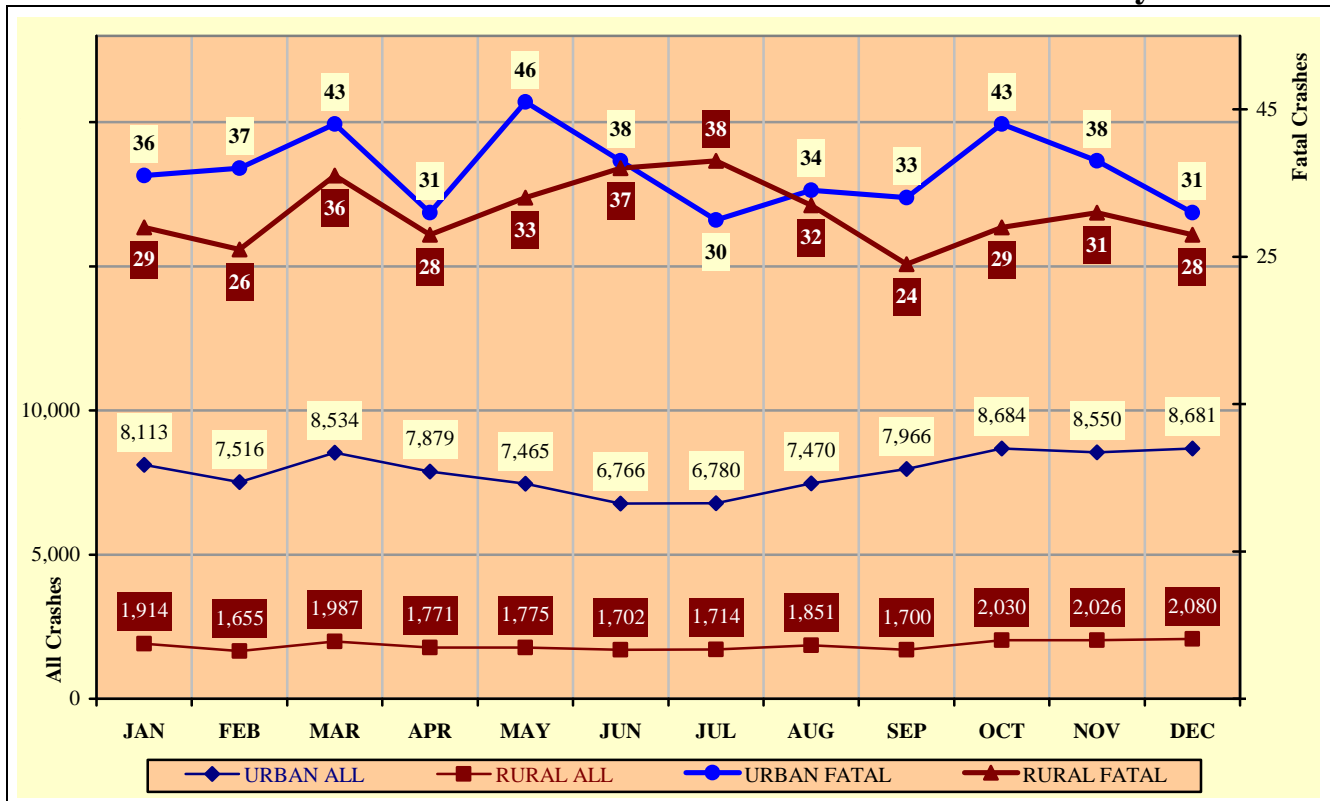


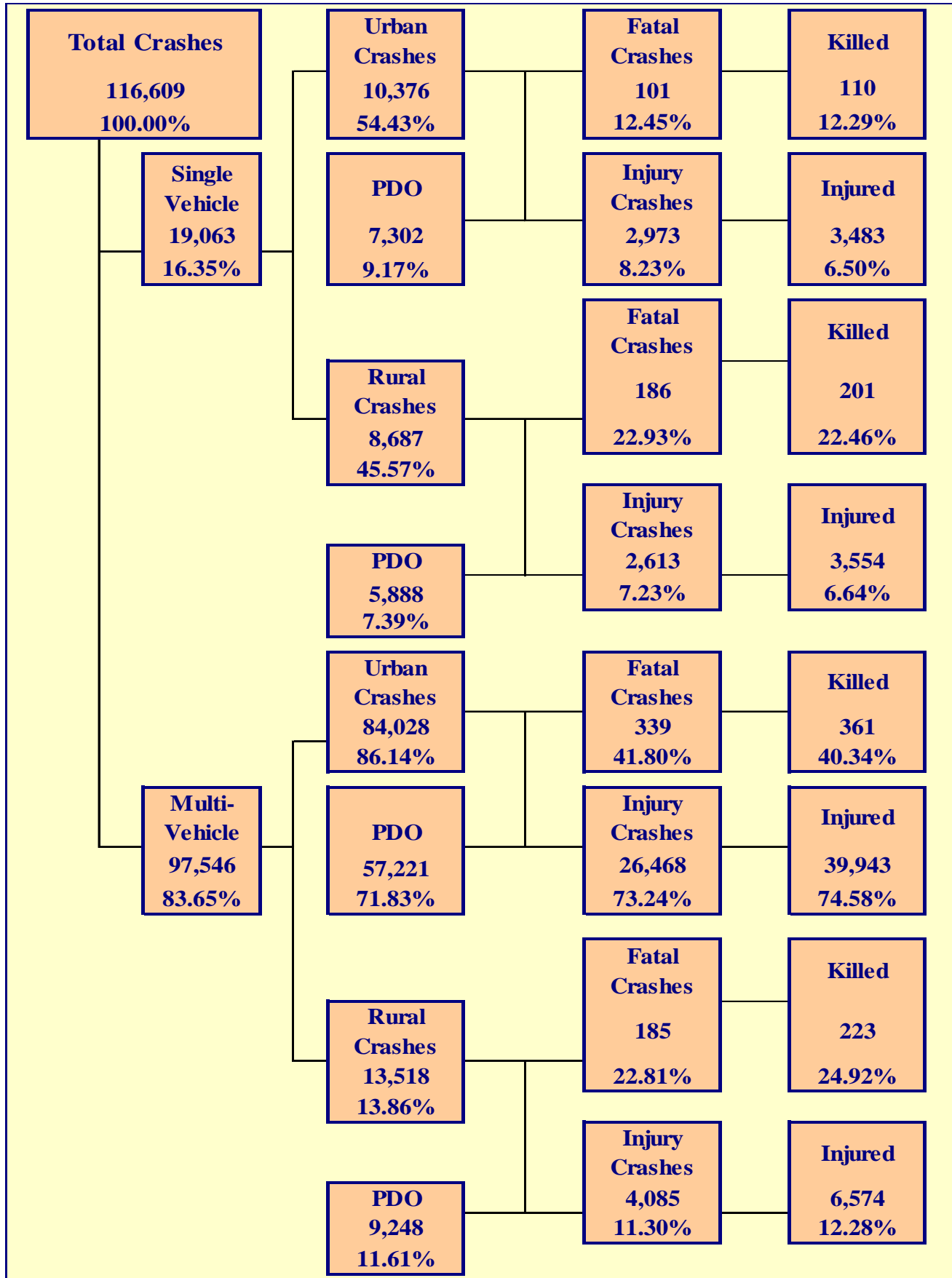
Chart 2 – 3

All Urban and Rural Crashes vs. Urban and Rural Fatal Crashes by Month



Section 3

Crash Descriptions



Section 3: – Crash Descriptions

Table 3 – 1
Manner of Collision in Multi-Vehicle Crashes

Manner of Collision Type	Number of Crashes							
	Total	Percent of Total Crashes	Fatal	Percent of Fatal Crashes	Injury	Percent of Injury Crashes	PDO	Percent of PDO Crashes
Angle	14,936	15.31%	82	15.65%	5,499	18.00%	9,355	14.07%
Left Turn	15,111	15.49%	60	11.45%	6,246	20.44%	8,805	13.25%
Rear End	44,855	45.98%	65	12.40%	13,536	44.30%	31,254	47.02%
Head-On	1,684	1.73%	61	11.64%	794	2.60%	829	1.25%
Sideswipe (same)	13,415	13.75%	18	3.44%	1,685	5.52%	11,712	17.62%
Sideswipe (opposite)	1,259	1.29%	6	1.15%	302	0.99%	951	1.43%
Rear to Side	365	0.37%	0	0.00%	81	0.27%	284	0.43%
Rear to Rear	796	0.82%	0	0.00%	50	0.16%	746	1.12%
Other	4,531	4.64%	222	42.37%	2,274	7.44%	2,035	3.06%
Unknown	594	0.61%	10	1.91%	86	0.28%	498	0.75%
TOTAL	97,546	100.00%	524	100.00%	30,553	100.00%	66,469	100.00%

Table 3 – 2
Lighting Conditions

Type of Lighting Conditions	Number of Crashes				Number of Persons	
	Total	Fatal	Injury	PDO	Killed	Injured
Daylight	83,309	357	25,995	56,957	401	38,499
Dawn	2,041	29	624	1,388	33	932
Dusk	3,380	30	1,071	2,279	32	1,641
Dark - Lighted	20,668	157	6,414	14,097	169	9,439
Dark - Not Lighted	6,599	149	1,941	4,509	165	2,885
Dark - Unknown Lighting	612	89	94	429	95	158
TOTAL	116,609	811	36,139	79,659	895	53,554

Table 3 – 3
Weather Conditions

Type of Weather Conditions	Number of Crashes				Number of Persons	
	Total	Fatal	Injury	PDO	Killed	Injured
Clear	97,403	550	30,408	66,445	602	45,122
Cloudy	12,622	97	3,940	8,585	112	5,778
Sleet/Hail	155	0	42	113	0	60
Rain	5,005	21	1,466	3,518	25	2,151
Snow	501	1	98	402	1	143
Severe Crosswinds	73	1	23	49	1	34
Blowing Sand, Soil, Dirt	47	0	17	30	0	20
Fog, Smog, Smoke	74	1	31	42	2	39
Blowing Snow	19	0	1	18	0	1
Other	60	1	14	45	1	23
Unknown	650	139	99	412	151	183
TOTAL	116,609	811	36,139	79,659	895	53,554

Section 3: – Crash Descriptions

Table 3 – 4
Road Surface Conditions

Type of Road Surface Condition	Number of Drivers				Number of Persons	
	Total	In Fatal Crashes	In Injury Crashes	In PDO Crashes	Killed	Injured
Dry	209,210	1,005	66,959	141,246	685	50,024
Wet	12,192	51	3,667	8,474	40	2,791
Snow	588	0	98	490	0	96
Slush	173	3	51	119	1	52
Ice/Frost	431	3	101	327	1	99
Water (standing or moving)	165	0	48	117	0	46
Sand	38	1	12	25	1	18
Mud, Dirt, Gravel	451	14	150	287	13	182
Oil	34	0	15	19	0	12
Other	66	1	18	47	1	21
Unknown	3,000	203	477	2,320	153	213
TOTAL	226,348	1,281	71,596	153,471	895	53,554

Table 3 – 5
Roadway Grade

Type of Roadway Grade	Number of Drivers				Number of Persons	
	Total	In Fatal Crashes	In Injury Crashes	In PDO Crashes	Killed	Injured
Level	208,143	871	66,157	141,115	583	49,053
Downhill	7,868	105	2,617	5,146	80	2,322
Uphill	6,732	82	2,069	4,581	62	1,721
Hillcrest	463	9	158	296	6	140
Sag/Dip/Bottom	192	3	75	114	3	69
Unknown	2,950	211	520	2,219	161	249
TOTAL	226,348	1,281	71,596	153,471	895	53,554

Table 3 – 6
Roadway Alignment

Type of Roadway Alignment	Number of Drivers				Number of Persons	
	Total	In Fatal Crashes	In Injury Crashes	In PDO Crashes	Killed	Injured
Straight	177,898	890	55,530	121,478	577	40,611
Curve Left	5,188	102	1,651	3,435	94	1,669
Curve Right	5,483	73	1,674	3,736	63	1,505
Unknown	37,779	216	12,741	24,822	161	9,769
TOTAL	226,348	1,281	71,596	153,471	895	53,554

Section 3: – Crash Descriptions

Chart 3 – 1

All Crashes vs. Fatal Crashes by Time of Day - Weekdays

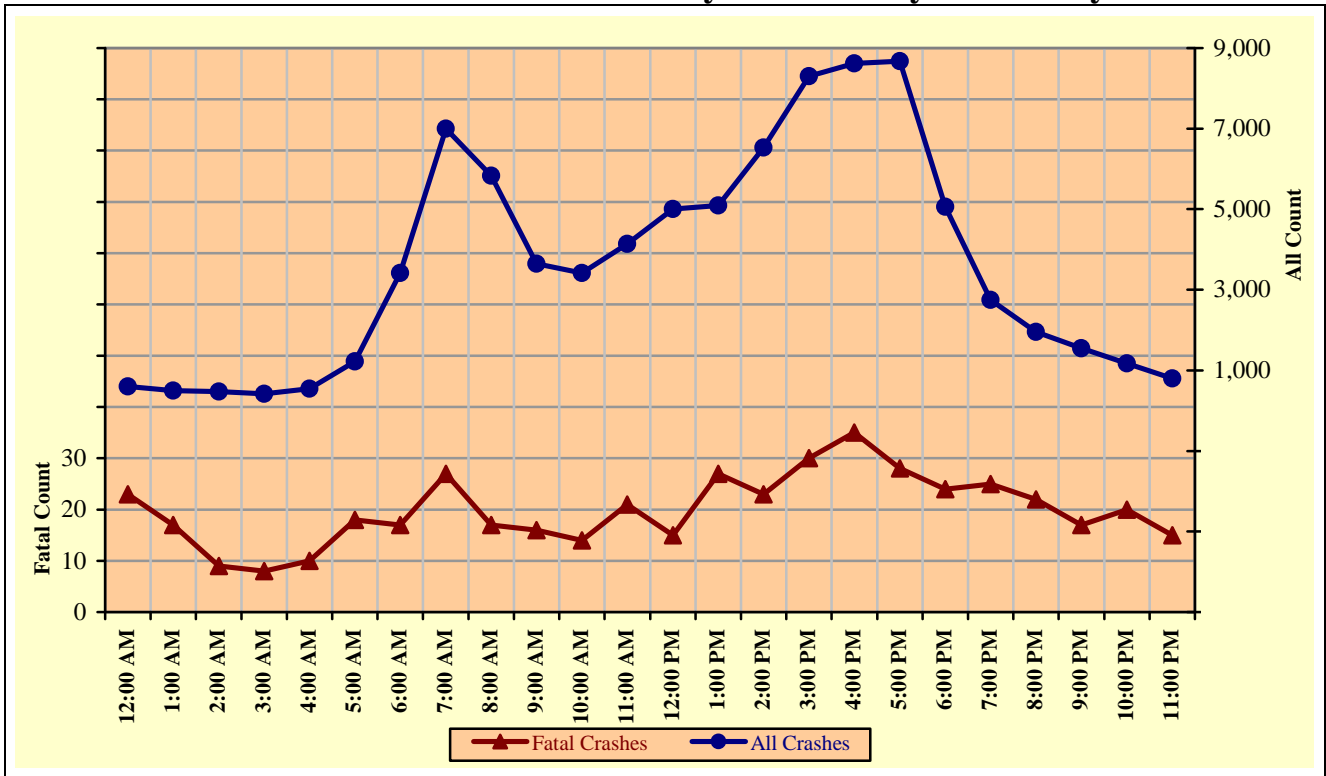
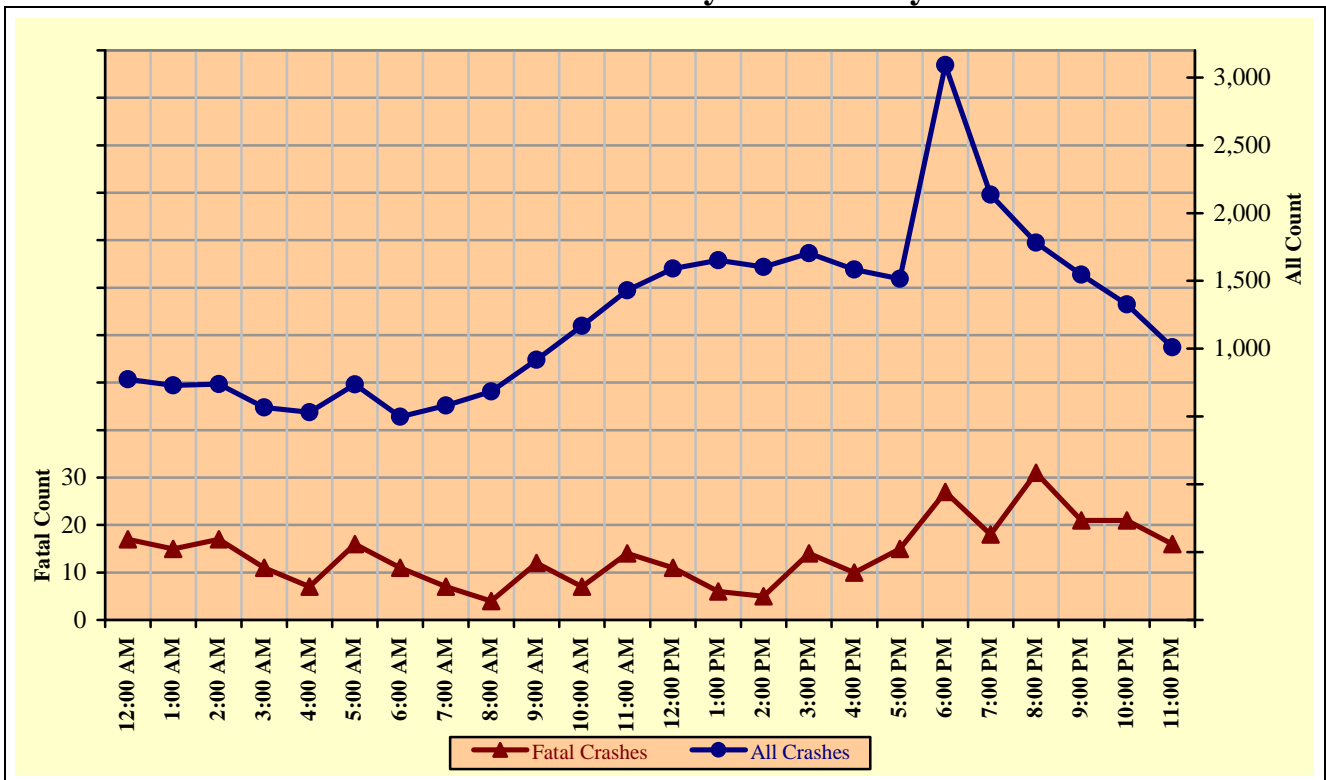


Chart 3 – 2

All Crashes vs. Fatal Crashes by Time of Day - Weekends



Section 3: – Crash Descriptions

Chart 3 – 3
Crashes by Day of Week

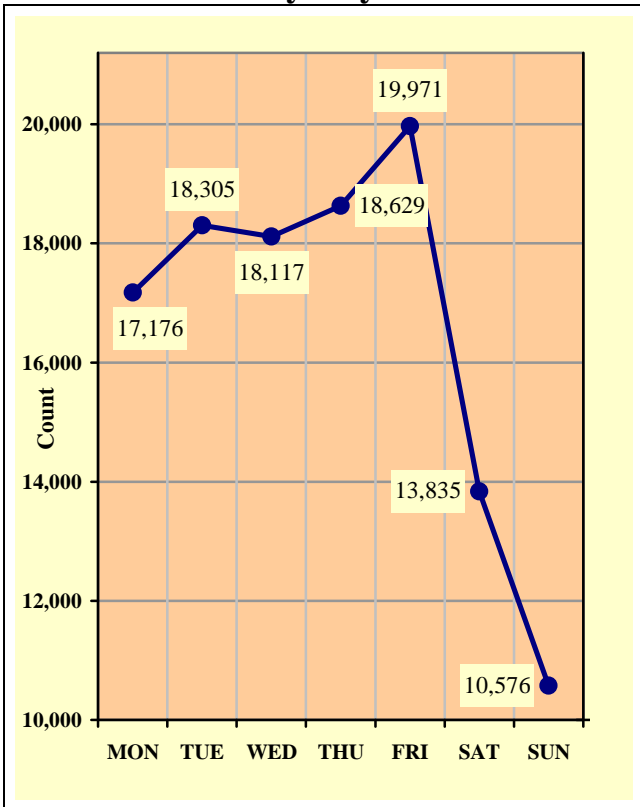


Chart 3 – 4
Fatal Crashes by Day of Week

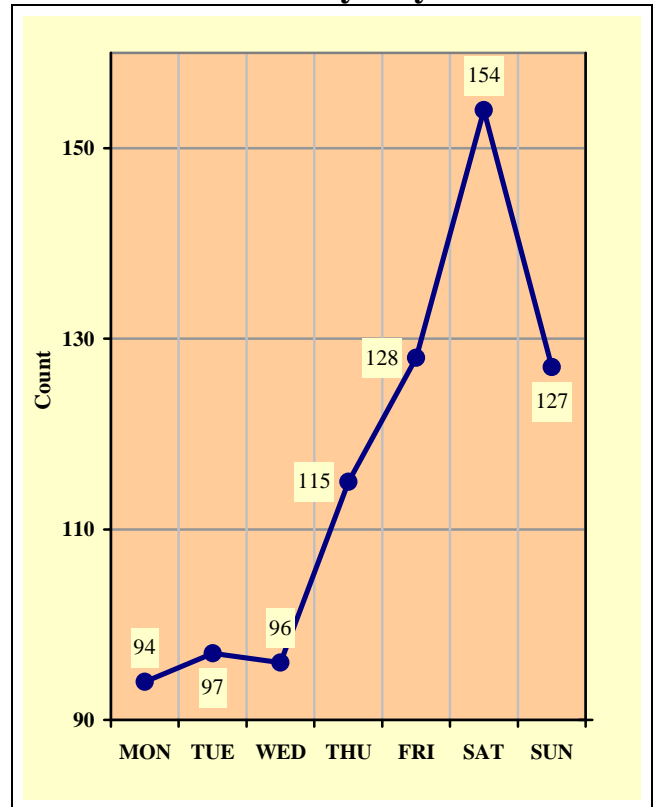
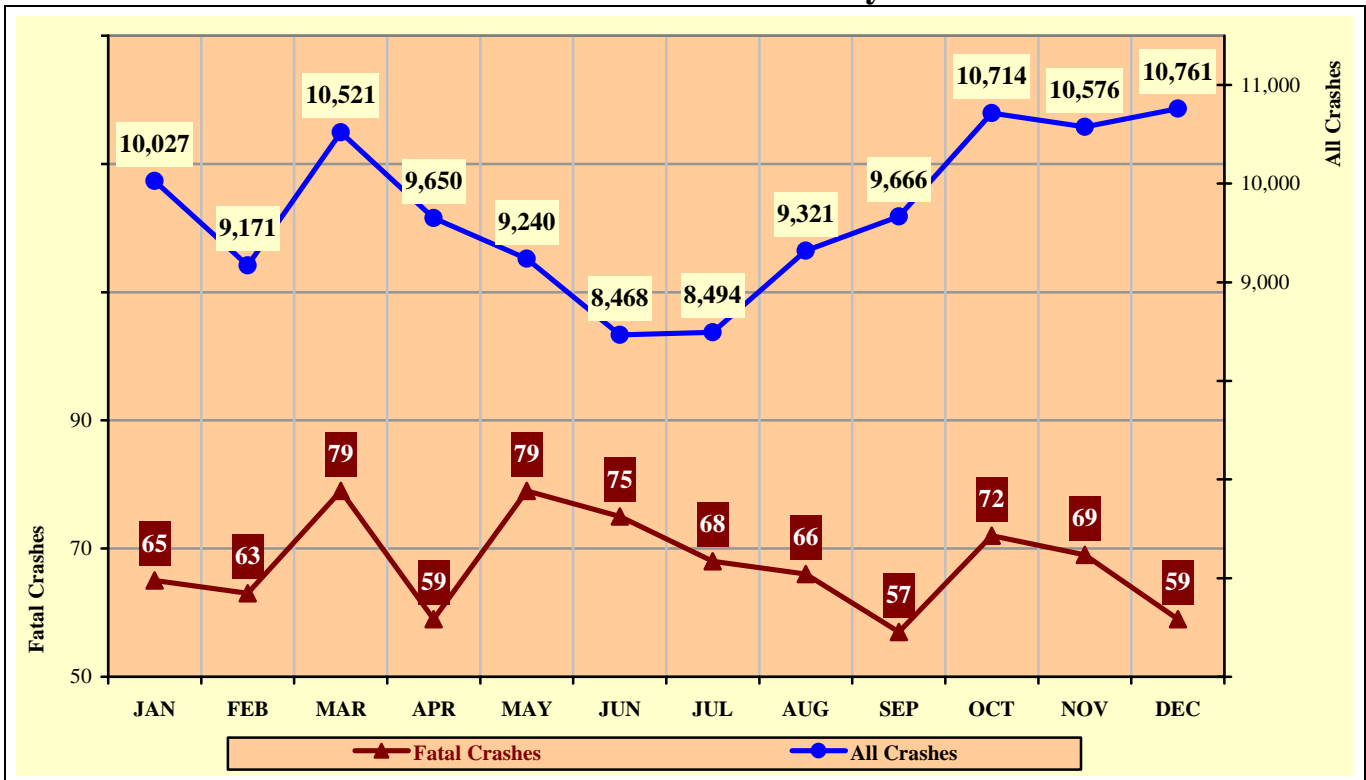


Chart 3 – 5
All Crashes vs. Fatal Crashes by Month



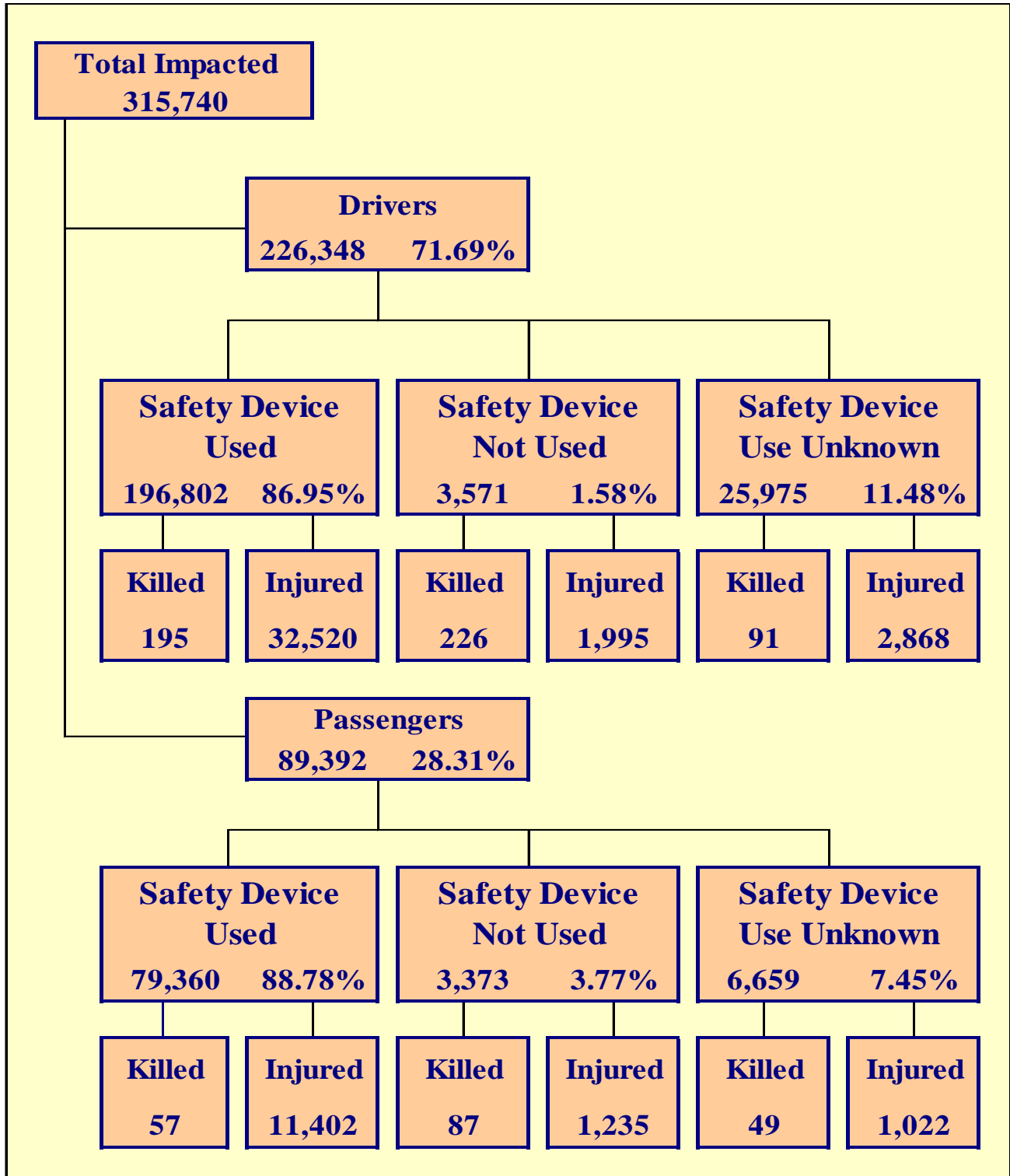
Section 3: – Crash Descriptions

**Table 3 – 7
Crashes by Hour and Day of Week**

Hour Beginning	Total Crashes		Monday		Tuesday		Wednesday		Thursday		Friday		Saturday		Sunday		Weekdays		Weekends	
	All	Fatal	All	Fatal	All	Fatal	All	Fatal	All	Fatal	All	Fatal	All	Fatal	All	Fatal	All	Fatal	All	Fatal
12:00 AM	1,374	40	153	3	139	6	129	5	164	7	168	5	320	8	301	6	600	23	774	17
1:00 AM	1,231	32	135	3	114	5	113	5	132	3	142	4	305	8	290	4	501	17	730	15
2:00 AM	1,215	26	120	1	107	2	85	1	142	1	143	5	308	9	310	7	477	9	738	17
3:00 AM	989	19	104	0	78	3	92	1	126	0	126	4	230	5	233	6	422	8	567	11
4:00 AM	1,077	17	138	0	117	1	141	2	151	3	137	4	196	5	197	2	546	10	531	7
5:00 AM	1,955	34	301	3	312	3	312	3	326	9	268	3	226	6	210	7	1,218	18	737	16
6:00 AM	3,913	28	671	4	734	6	706	1	747	2	556	4	244	4	255	7	3,414	17	499	11
7:00 AM	7,576	34	1,410	4	1,514	6	1,447	6	1,456	0	1,168	11	315	3	266	4	6,995	27	581	7
8:00 AM	6,512	21	1,105	4	1,349	0	1,192	6	1,194	5	987	2	404	2	281	2	5,827	17	685	4
9:00 AM	4,566	28	749	2	733	2	684	2	721	6	760	4	570	10	349	2	3,647	16	919	12
10:00 AM	4,580	21	675	2	695	5	622	1	684	4	736	2	692	4	476	3	3,412	14	1,168	7
11:00 AM	5,570	35	791	5	813	5	826	3	798	5	912	3	870	9	560	5	4,140	21	1,430	14
12:00 PM	6,596	26	922	3	979	5	1,002	1	967	3	1,136	3	964	3	626	8	5,006	15	1,590	11
1:00 PM	6,739	33	989	4	953	5	981	4	967	4	1,197	10	991	4	661	2	5,087	27	1,652	6
2:00 PM	8,135	28	1,269	4	1,342	3	1,218	7	1,210	6	1,493	3	920	3	683	2	6,532	23	1,603	5
3:00 PM	10,007	44	1,603	5	1,676	7	1,561	9	1,631	3	1,832	6	928	7	776	7	8,303	30	1,704	14
4:00 PM	10,206	45	1,557	10	1,713	3	1,680	4	1,799	7	1,873	11	896	6	688	4	8,622	35	1,584	10
5:00 PM	10,194	43	1,510	10	1,744	2	1,820	9	1,804	5	1,800	2	840	6	676	9	8,678	28	1,516	15
6:00 PM	8,151	51	1,087	8	1,269	6	1,376	2	1,328	8	1,468	6	905	14	718	7	5,060	24	3,091	27
7:00 PM	4,882	43	605	3	663	8	740	6	737	8	919	6	655	9	563	3	2,745	25	2,137	18
8:00 PM	3,736	53	491	2	469	7	477	6	518	7	665	11	611	8	505	12	1,955	22	1,781	31
9:00 PM	3,094	38	343	4	343	3	427	5	436	5	563	6	568	9	414	6	1,549	17	1,545	21
10:00 PM	2,497	41	250	6	286	1	286	5	348	8	520	9	485	5	322	7	1,170	20	1,327	21
11:00 PM	1,814	31	198	4	163	3	200	2	243	6	402	4	392	7	216	5	804	15	1,010	16
TOTAL	116,609	811	17,176	94	18,305	97	18,117	96	18,629	115	19,971	128	13,835	154	10,576	127	86,710	478	29,899	333

Crashes during Weekends accounted for 25.64% of all crashes and 41.06% of Fatal Crashes.

Crashes during Weekdays accounted for 74.36% of all crashes and 58.94% of Fatal Crashes.



Section 4: – Safety Devices

**Table 4 – 1
Child Safety Device Usage (less than five years old)**

Severity of Injury	Safety Device Used	Percent of Safety Device Used	Safety Device Not Used	Percent of Safety Device Not Used	Safety Device Use Unknown	Percent of Unknown
No Injury	10,877	91.12%	116	61.38%	217	58.49%
Unknown Injury	99	0.83%	7	3.70%	114	30.73%
Possible Injury	694	5.81%	25	13.23%	25	6.74%
Non-Incapacitating Injury	229	1.92%	22	11.64%	6	1.62%
Incapacitating Injury	36	0.30%	14	7.41%	7	1.89%
Fatal Injury	2	0.02%	5	2.65%	2	0.54%
TOTALS	11,937	100.00%	189	100.00%	371	100.00%

**Table 4 – 2
Driver Safety Device Usage**

Severity of Injury	Safety Device Used	Percent of Safety Device Used	Safety Device Not Used	Percent of Safety Device Not Used	Safety Device Use Unknown	Percent of Unknown
No Injury	163,341	83.00%	1,323	37.05%	12,061	46.43%
Unknown Injury	746	0.38%	27	0.76%	10,955	42.18%
Possible Injury	19,554	9.94%	582	16.30%	1,332	5.13%
Non-Incapacitating Injury	11,130	5.66%	944	26.44%	1,110	4.27%
Incapacitating Injury	1,836	0.93%	469	13.13%	426	1.64%
Fatal Injury	195	0.10%	226	6.33%	91	0.35%
TOTALS	196,802	100.00%	3,571	100.00%	25,975	100.00%

**Table 4 – 3
Passenger Safety Device Usage**

Severity of Injury	Safety Device Used	Percent of Safety Device Used	Safety Device Not Used	Percent of Safety Device Not Used	Safety Device Use Unknown	Percent of Unknown
No Injury	67,457	85.00%	1,954	57.93%	4,447	66.78%
Unknown Injury	444	0.56%	97	2.88%	1,141	17.13%
Possible Injury	7,338	9.25%	455	13.49%	531	7.97%
Non-Incapacitating Injury	3,509	4.42%	555	16.45%	361	5.42%
Incapacitating Injury	555	0.70%	225	6.67%	130	1.95%
Fatal Injury	57	0.07%	87	2.58%	49	0.74%
TOTALS	79,360	100.00%	3,373	100.00%	6,659	100.00%

Section 4: – Safety Devices

**Table 4 – 4
Driver Safety Device Usage by Gender**

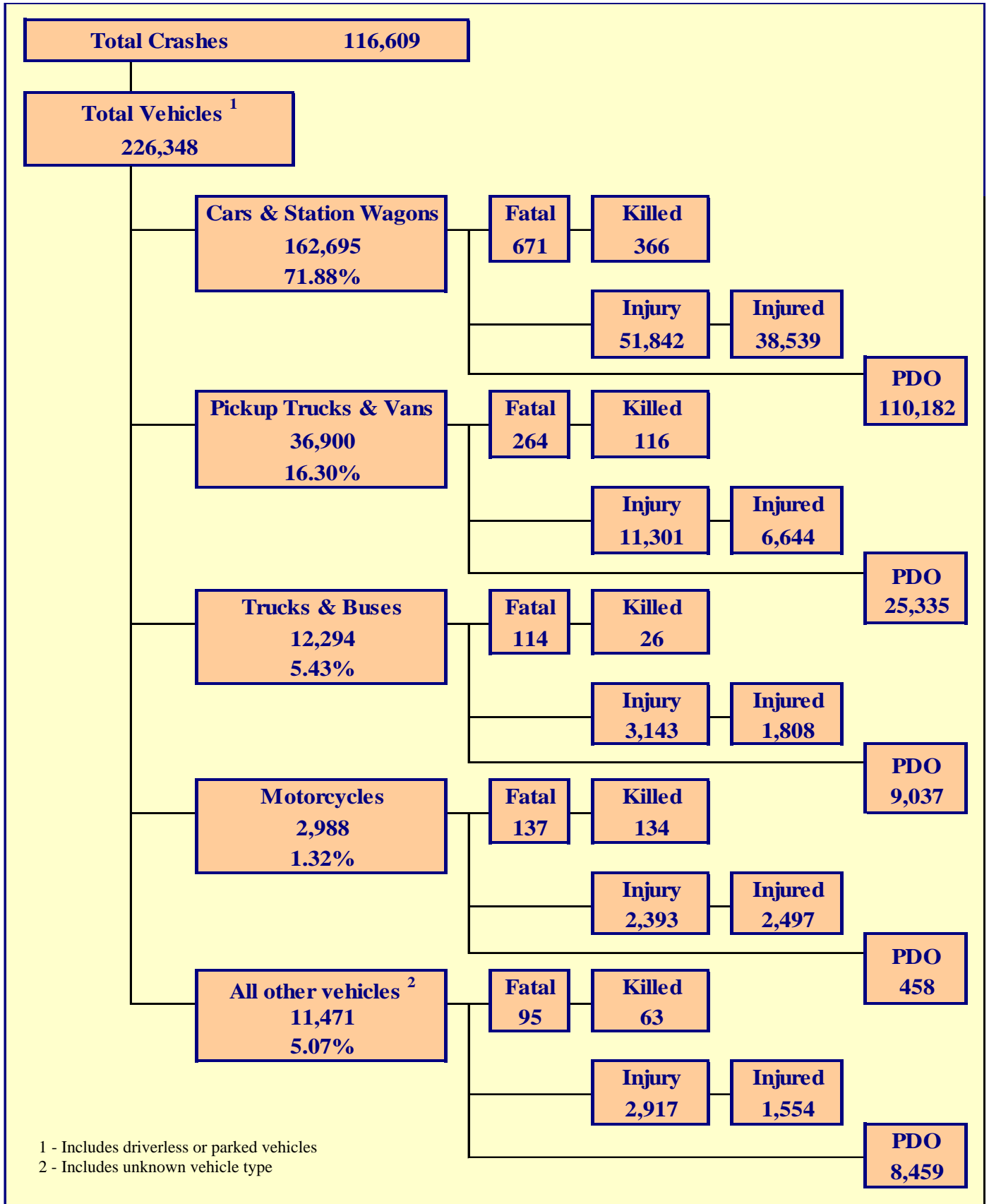
Gender of Driver	Number of Drivers						Total	Percent of Total
	Safety Device Used	Percent of Safety Device Used	Safety Device Not Used	Percent of Safety Device Not Used	Safety Device Use Unknown	Percent of Unknown		
Male	109,580	55.68%	2,537	71.04%	8,930	34.38%	121,047	53.48%
Female	87,123	44.27%	1,023	28.65%	4,489	17.28%	92,635	40.93%
Unknown	99	0.05%	11	0.31%	12,556	48.34%	12,666	5.60%
TOTAL	196,802	100.00%	3,571	100.00%	25,975	100.00%	226,348	100.00%

**Table 4 – 5
Driver Safety Device Usage by Age**

Driver Age Group	Number of Drivers						Total	Percent of Total
	Safety Device Used	Percent of Safety Device Used	Safety Device Not Used	Percent of Safety Device Not Used	Safety Device Use Unknown	Percent of Unknown		
15 & Under	213	0.11%	20	0.56%	46	0.18%	279	0.12%
16	2,508	1.27%	36	1.01%	142	0.55%	2,686	1.19%
17	3,963	2.01%	74	2.07%	207	0.80%	4,244	1.87%
18	5,729	2.91%	124	3.47%	349	1.34%	6,202	2.74%
19	5,945	3.02%	134	3.75%	332	1.28%	6,411	2.83%
20	5,946	3.02%	169	4.73%	367	1.41%	6,482	2.86%
21	5,970	3.03%	145	4.06%	406	1.56%	6,521	2.88%
22	5,594	2.84%	145	4.06%	364	1.40%	6,103	2.70%
23	5,563	2.83%	124	3.47%	383	1.47%	6,070	2.68%
24	5,533	2.81%	123	3.44%	381	1.47%	6,037	2.67%
25-34	43,356	22.03%	868	24.31%	2,782	10.71%	47,006	20.77%
35-44	34,135	17.34%	536	15.01%	1,978	7.62%	36,649	16.19%
45-54	29,463	14.97%	452	12.66%	1,672	6.44%	31,587	13.96%
55-64	22,348	11.36%	315	8.82%	1,199	4.62%	23,862	10.54%
65-74	12,842	6.53%	168	4.70%	612	2.36%	13,622	6.02%
75 & Older	6,757	3.43%	105	2.94%	329	1.27%	7,191	3.18%
Unknown	937	0.48%	33	0.92%	14,426	55.54%	15,396	6.80%
TOTAL	196,802	100.00%	3,571	100.00%	25,975	100.00%	226,348	100.00%

Section 5

Motor Vehicle and Driver Descriptions



Section 5: – Motor Vehicle and Driver Descriptions

Table 5 – 1

Arizona Motor Vehicle Registrations

Privately Owned Vehicles	4,786,194
Commercial Vehicles	496,631
Buses and Taxis	4,162
Motorcycles	199,721
Mopeds	350
TOTAL	5,487,058
Source: MVD - MV988 MV630419, Currently Registered Vehicles by County Listing, dated 12/31/2015.	

Table 5 – 2

Motor Vehicle Crash Involvement by Vehicle Type

Motor Vehicle Type	Number of Vehicles				
	Total	Percent of Total	In Fatal Crashes	In Injury Crashes	In PDO Crashes
Passenger Cars (Sedans, Convertibles, etc.)	114,659	50.656%	448	36,439	77,772
Station Wagons	48,036	21.222%	223	15,403	32,410
Pickup Trucks	34,537	15.258%	253	10,511	23,773
Vans	2,363	1.044%	11	790	1,562
Truck Tractor (with or without Semi-Trailer)	2,152	0.951%	66	467	1,619
Concrete Mixer Trucks	49	0.022%	0	15	34
Dump Trucks	169	0.075%	2	68	99
Garbage Trucks	117	0.052%	1	15	101
Tanker Trucks	28	0.012%	0	12	16
Wrecker or Tow Trucks	149	0.066%	1	37	111
Other Truck Combinations	8,598	3.799%	38	2,288	6,272
School Bus	234	0.103%	2	55	177
Commercial or Non-Commercial Bus	798	0.353%	4	186	608
Motorcycle (two or three wheel)	2,988	1.320%	137	2,393	458
All Terrain Vehicle or Cycle	126	0.056%	16	79	31
Moped	13	0.006%	2	11	0
Recreational Vehicle	194	0.086%	3	61	130
Motor Home or House Car	102	0.045%	2	20	80
Fire Trucks	52	0.023%	0	3	49
Ambulances	57	0.025%	0	15	42
Other Types Of Vehicles	175	0.077%	2	89	84
Vehicle Type Unknown	10,752	4.750%	70	2,639	8,043
TOTAL	226,348	100.00%	1,281	71,596	153,471

Section 5: – Motor Vehicle and Driver Descriptions

Table 5 – 3

Hit and Run Drivers Involved in Crashes

Hit and Run	Number of Crashes				Number of Persons	
	Total	Fatal	Injury	PDO	Killed	Injured
Yes	13,018	56	2,530	10,432	57	3,323
No	103,591	755	33,609	69,227	838	50,231
TOTAL	116,609	811	36,139	79,659	895	53,554

Table 5 – 4

Gender of Drivers Involved in Crashes

Gender of Driver	Number of Drivers							
	Total	Percent of Total	In Fatal Crashes	Percent of Fatal	In Injury Crashes	Percent of Injury	In PDO Crashes	Percent of PDO
Male	121,047	53.48%	888	69.32%	38,489	53.76%	81,670	53.22%
Female	92,635	40.93%	295	23.03%	31,069	43.39%	61,271	39.92%
Unknown	12,666	5.60%	98	7.65%	2,038	2.85%	10,530	6.86%
TOTAL	226,348	100.00%	1,281	100.00%	71,596	100.00%	153,471	100.00%

Table 5 – 5

License Status of Drivers Involved in Crashes

License Status of Driver	Number of Drivers							
	Total	Percent of Total	In Fatal Crashes	Percent of Fatal	In Injury Crashes	Percent of Injury	In PDO Crashes	Percent of PDO
Arizona License	181,303	80.10%	905	70.65%	59,091	82.53%	121,307	79.04%
All Others*	45,045	19.90%	376	29.35%	12,505	17.47%	32,164	20.96%
TOTAL	226,348	100.00%	1,281	100.00%	71,596	100.00%	153,471	100.00%

*Includes drivers that have a suspended, revoked, out-of-state or country license, as well as drivers with no license or unknown license type

Table 5 – 6

Passengers Killed and Injured by Age and Gender

Age of Passenger	Passengers Killed				Passengers Injured			
	Total	Male	Female	Gender Unknown	Total	Male	Female	Gender Unknown
0-4	8	1	7	0	853	442	411	0
5-9	7	3	4	0	1,180	557	623	0
10-14	6	2	4	0	1,226	520	706	0
15-19	20	10	10	0	1,905	794	1,111	0
20-24	22	11	11	0	1,603	643	960	0
25-34	36	19	17	0	1,768	752	1,016	0
35-44	18	9	9	0	1,260	426	834	0
45-54	20	9	11	0	1,241	365	876	0
55-64	17	7	10	0	995	260	735	0
65-74	15	6	9	0	727	189	538	0
75 & Older	21	8	13	0	531	142	389	0
Unknown	3	1	0	2	370	130	215	25
TOTAL	193	86	105	2	13,659	5,220	8,414	25

Section 5: – Motor Vehicle and Driver Descriptions

Table 5 – 7

Drivers and Passengers Killed and Injured by Vehicle Type

Motor Vehicle Type	Number of Drivers		Number of Passengers	
	Killed	Injured	Killed	Injured
Passenger Cars (Sedans, Convertibles, etc.)	166	20,336	74	7,027
Station Wagons	74	7,757	52	3,419
Pickup Trucks	79	4,446	31	1,633
Vans	3	362	3	203
Truck Tractor (with or without Semi-Trailer)	11	145	2	43
Concrete Mixer Trucks	0	7	0	0
Dump Trucks	0	16	0	4
Garbage Trucks	0	1	0	0
Tanker Trucks	0	7	0	1
Wrecker or Tow Trucks	0	7	0	0
Other Truck Combinations	8	876	5	421
School Bus	0	10	0	33
Commercial or Non-Commercial Bus	0	44	0	193
Motorcycle (two or three wheel)	130	2,327	4	170
All Terrain Vehicle or Cycle	16	72	2	38
Moped	2	11	0	0
Recreational Vehicle	2	22	0	11
Motor Home or House Car	1	5	1	4
Fire Trucks	0	1	0	0
Ambulances	0	5	0	7
Other Types Of Vehicles	0	72	2	13
Vehicle Type Unknown	20	854	17	439
TOTAL	512	37,383	193	13,659

Table 5 – 8

Drivers Killed and Injured by Age and Gender

Age of Driver	Drivers Killed			Drivers Injured			
	Total	Male	Female	Total	Male	Female	Gender Unknown
0-4	0	0	0	0	0	0	0
5-9	0	0	0	0	0	0	0
10-14	1	1	0	11	7	4	0
15-19	21	16	5	3,029	1,469	1,560	0
20-24	62	54	8	5,405	2,763	2,642	0
25-34	88	68	20	8,338	3,977	4,361	0
35-44	87	73	14	6,294	3,148	3,146	0
45-54	83	63	20	5,699	2,907	2,792	0
55-64	75	55	20	4,446	2,271	2,175	0
65-74	52	42	10	2,519	1,325	1,194	0
75 & Older	43	31	12	1,449	756	693	0
Unknown	0	0	0	193	102	62	29
TOTAL	512	403	109	37,383	18,725	18,629	29

Section 5: – Motor Vehicle and Driver Descriptions

**Table 5 – 9
Licensed Drivers in Arizona by Age**

Driver Age Group	Male Number	Percent of Male	Female Number	Percent of Female	Total Number	Percent of Total	Cumulative Percent
16	9,875	0.39%	10,103	0.40%	19,978	0.40%	0.40%
17	18,575	0.74%	17,767	0.71%	36,342	0.72%	1.12%
18	26,583	1.05%	23,777	0.95%	50,360	1.00%	2.12%
19	31,661	1.25%	29,370	1.18%	61,031	1.21%	3.34%
20	34,539	1.37%	32,243	1.29%	66,782	1.33%	4.67%
21	37,323	1.48%	35,178	1.41%	72,501	1.44%	6.11%
22	38,628	1.53%	36,958	1.48%	75,586	1.50%	7.61%
23	40,915	1.62%	39,058	1.56%	79,973	1.59%	9.20%
24	41,778	1.65%	40,714	1.63%	82,492	1.64%	10.84%
25-34	454,025	17.97%	447,094	17.89%	901,119	17.93%	28.77%
35-44	466,170	18.45%	446,061	17.85%	912,231	18.15%	46.93%
45-54	469,859	18.60%	448,452	17.94%	918,311	18.27%	65.20%
55-64	425,568	16.84%	440,565	17.63%	866,133	17.23%	82.43%
65-74	271,757	10.76%	287,475	11.50%	559,232	11.13%	93.56%
75 & older	159,181	6.30%	164,559	6.58%	323,740	6.44%	100.00%
TOTALS	2,526,437	100.00%	2,499,374	100.00%	5,025,811	100.00%	100.00%

Source: MVD - MV708 MV650653-1, Point-in-Time Driver Credential Report/All Driver Licenses by Age, Gender, & Class (page 19), dated 1/4/2016.

**Table 5 – 10
Driver Involvement by Age**

Driver Age Group	Number of Drivers							
	Total	Percent of Total	In Fatal Crashes	Percent of Fatal	In Injury Crashes	Percent of Injury	In PDO Crashes	Percent of PDO
15 & Under	279	0.12%	4	0.31%	85	0.12%	190	0.12%
16	2,686	1.19%	11	0.86%	781	1.09%	1,894	1.23%
17	4,244	1.87%	13	1.01%	1,288	1.80%	2,943	1.92%
18	6,202	2.74%	19	1.48%	1,898	2.65%	4,285	2.79%
19	6,411	2.83%	20	1.56%	2,097	2.93%	4,294	2.80%
20	6,482	2.86%	27	2.11%	2,033	2.84%	4,422	2.88%
21	6,521	2.88%	34	2.65%	2,097	2.93%	4,390	2.86%
22	6,103	2.70%	28	2.19%	2,005	2.80%	4,070	2.65%
23	6,070	2.68%	36	2.81%	1,990	2.78%	4,044	2.64%
24	6,037	2.67%	19	1.48%	2,013	2.81%	4,005	2.61%
25-34	47,006	20.77%	223	17.41%	15,272	21.33%	31,511	20.53%
35-44	36,649	16.19%	223	17.41%	11,895	16.61%	24,531	15.98%
45-54	31,587	13.96%	188	14.68%	10,388	14.51%	21,011	13.69%
55-64	23,862	10.54%	153	11.94%	7,929	11.07%	15,780	10.28%
65-74	13,622	6.02%	93	7.26%	4,642	6.48%	8,887	5.79%
75 & Older	7,191	3.18%	78	6.09%	2,469	3.45%	4,644	3.03%
Unknown	15,396	6.80%	112	8.74%	2,714	3.79%	12,570	8.19%
TOTAL	226,348	100.00%	1,281	100.00%	71,596	100.00%	153,471	100.00%

Section 5: – Motor Vehicle and Driver Descriptions

**Table 5 – 11
Driver Violations**

Type of Violation or Behavior	Number of Drivers							
	Total	Percent of Total	In Fatal Crashes	Percent of Fatal	In Injury Crashes	Percent of Injury	In PDO Crashes	Percent of PDO
No Improper Action	112,136	49.54%	469	36.61%	36,177	50.53%	75,490	49.19%
Speed too Fast for Conditions	41,309	18.25%	174	13.58%	13,388	18.70%	27,747	18.08%
Exceeded Lawful Speed	968	0.43%	44	3.43%	444	0.62%	480	0.31%
Failed to Yield Right-Of-Way	17,419	7.70%	89	6.95%	6,866	9.59%	10,464	6.82%
Followed Too Closely	6,566	2.90%	5	0.39%	1,843	2.57%	4,718	3.07%
Ran Stop Sign	1,050	0.46%	15	1.17%	432	0.60%	603	0.39%
Disregarded Traffic Signal	5,014	2.22%	35	2.73%	2,381	3.33%	2,598	1.69%
Made Improper Turn	5,308	2.35%	9	0.70%	1,451	2.03%	3,848	2.51%
Drove in Opposing Lane	1,244	0.55%	63	4.92%	504	0.70%	677	0.44%
Knowingly Operated with Faulty or Missing Equipment	201	0.09%	4	0.31%	64	0.09%	133	0.09%
Required Motorcycle Safety Equipment Not Used	17	0.01%	0	0.00%	10	0.01%	7	0.00%
Passed in No-Passing Zone	102	0.05%	1	0.08%	25	0.03%	76	0.05%
Unsafe Lane Change	7,189	3.18%	14	1.09%	1,074	1.50%	6,101	3.98%
Failed to Keep in Proper Lane	4,019	1.78%	64	5.00%	1,083	1.51%	2,872	1.87%
Disregarded Pavement Markings	220	0.10%	2	0.16%	57	0.08%	161	0.10%
Other Unsafe Passing	589	0.26%	2	0.16%	129	0.18%	458	0.30%
Inattention/Distraction	1,659	0.73%	5	0.39%	455	0.64%	1,199	0.78%
Electronic Communications Device	25	0.01%	1	0.08%	11	0.02%	13	0.01%
Other	6,347	2.80%	38	2.97%	1,647	2.30%	4,662	3.04%
Unknown	14,966	6.61%	247	19.28%	3,555	4.97%	11,164	7.27%
TOTAL	226,348	100.00%	1,281	100.00%	71,596	100.00%	153,471	100.00%

**Table 5 – 12
Driver Physical Condition**

Type of Condition	Number of Drivers							
	Total	Percent of Total	In Fatal Crashes	Percent of Fatal	In Injury Crashes	Percent of Injury	In PDO Crashes	Percent of PDO
No Apparent Influence	199,936	88.33%	657	51.29%	63,903	89.25%	135,376	88.21%
Had Been Drinking	4,757	2.10%	207	16.16%	1,963	2.74%	2,587	1.69%
Appeared to be Under the Influence of Drugs*	759	0.34%	62	4.84%	350	0.49%	347	0.23%
Medications	174	0.08%	1	0.08%	81	0.11%	92	0.06%
Illness	738	0.33%	11	0.86%	353	0.49%	374	0.24%
Physical Impairment	174	0.08%	1	0.08%	93	0.13%	80	0.05%
Fell Asleep or Fatigued	1,636	0.72%	13	1.01%	653	0.91%	970	0.63%
Other	1,397	0.62%	26	2.03%	365	0.51%	1,006	0.66%
Unknown	16,777	7.41%	303	23.65%	3,835	5.36%	12,639	8.24%
TOTAL	226,348	100.00%	1,281	100.00%	71,596	100.00%	153,471	100.00%
*Illegal drugs or narcotics								

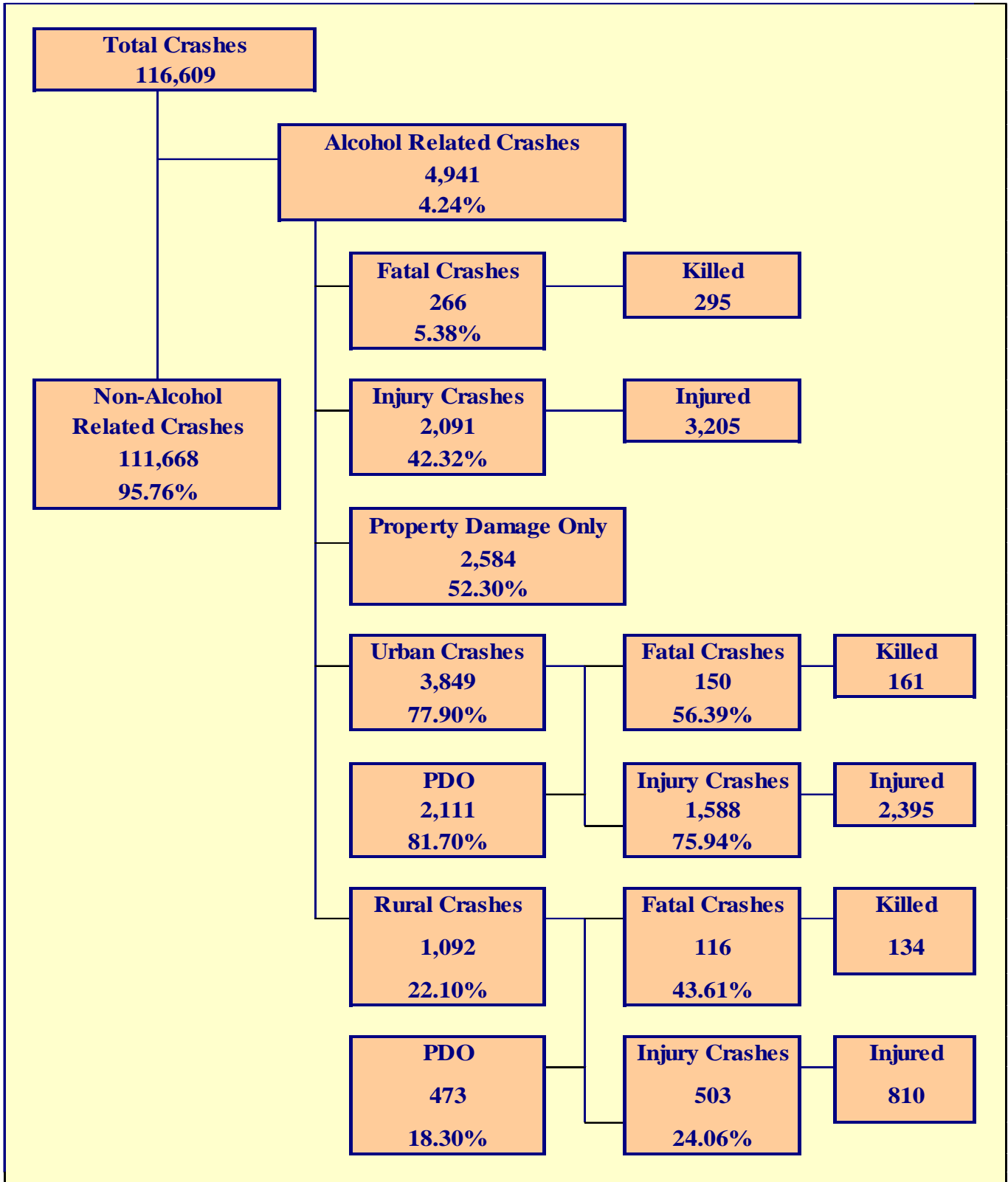
Section 5: – Motor Vehicle and Driver Descriptions

Table 5 – 13
Distracted Driving Behavior

Type of Distraction	Number of Drivers							
	Total	Percent of Total	In Fatal Crashes	Percent of Fatal	In Injury Crashes	Percent of Injury	In PDO Crashes	Percent of PDO
Not Distracted	130,025	57.44%	447	34.89%	40,639	56.76%	88,939	57.95%
Talking on Hands Free Device	165	0.07%	2	0.16%	53	0.07%	110	0.07%
Talking on Hand Held Device	374	0.17%	2	0.16%	124	0.17%	248	0.16%
Passenger	873	0.39%	6	0.47%	319	0.45%	548	0.36%
Other Activity with an Electronic Device	1,086	0.48%	8	0.62%	397	0.55%	681	0.44%
Manually Operating an Electronic Device	587	0.26%	3	0.23%	219	0.31%	365	0.24%
Other Inside the Vehicle (eating, drinking, etc.)	2,416	1.07%	3	0.23%	867	1.21%	1,546	1.01%
Outside the Vehicle (includes unspecified distractions)	2,242	0.99%	9	0.70%	691	0.97%	1,542	1.00%
Unknown	88,580	39.13%	801	62.53%	28,287	39.51%	59,492	38.76%
TOTAL	226,348	100.00%	1,281	100.00%	71,596	100.00%	153,471	100.00%

Table 5 – 14
Secondary Crashes

Secondary Crash	Number of Crashes				Number of Persons	
	Total	Fatal	Injury	PDO	Killed	Injured
Yes	2,566	11	887	1,668	11	1,479
No	82,067	541	24,924	56,602	602	36,025
Unknown	31,976	259	10,328	21,389	282	16,050
TOTAL	116,609	811	36,139	79,659	895	53,554



Section 6: – Alcohol Related Crashes

The statistics in the Alcohol Related section represent those crashes where the investigating officer indicated that a driver, pedestrian, or pedalcyclist had been drinking an alcoholic beverage and may or may not be substantiated by a blood or breath test. No assumption is to be made that the person was legally intoxicated (blood alcohol content of 0.08% or higher) at the time of the crash.

**Table 6 – 1
Economic Loss Due to Alcohol Related Crashes in Arizona for 2015**

Fatalities	\$454,960,800
Incapacitating Injuries	\$50,731,740
Non-Incapacitating Injuries	\$32,535,552
Possible Injuries	\$29,923,740
Property Damage Only	\$29,783,184
TOTAL	\$597,935,016

Refer to note on Page 4 for Economic Loss Estimates

**Table 6 – 2
Alcohol Related Crash History**

Year	Alcohol Related Crashes	Percent of all Crashes	Persons Killed	Percent of all Fatalities	Persons Injured	Percent of all Injuries
2011	5,602	5.39%	287	34.70%	3,714	7.45%
2012	5,462	5.26%	283	34.47%	3,755	7.50%
2013	5,245	4.88%	282	33.22%	3,522	6.98%
2014	4,906	4.47%	269	34.75%	3,175	6.23%
2015	4,941	4.24%	295	32.96%	3,205	5.98%

**Table 6 – 3
Manner of Collision in Alcohol Related Crashes**

Manner of Collision Type	Number of Crashes							
	Total	Percent of All Crashes	Fatal	Percent of Fatal Crashes	Injury	Percent of Injury Crashes	PDO	Percent of PDO Crashes
Angle	420	14.53%	12	7.59%	226	17.75%	182	12.47%
Left Turn	336	11.62%	11	6.96%	155	12.18%	170	11.64%
Rear End	1,198	41.44%	23	14.56%	489	38.41%	686	46.99%
Head-On	193	6.68%	24	15.19%	107	8.41%	62	4.25%
Sideswipe (same)	255	8.82%	3	1.90%	62	4.87%	190	13.01%
Sideswipe (opposite)	107	3.70%	1	0.63%	38	2.99%	68	4.66%
Rear to Side	18	0.62%	0	0.00%	1	0.08%	17	1.16%
Rear to Rear	15	0.52%	0	0.00%	6	0.47%	9	0.62%
Other	333	11.52%	84	53.16%	183	14.38%	66	4.52%
Unknown	16	0.55%	0	0.00%	6	0.47%	10	0.68%
TOTAL	2,891	100.00%	158	100.00%	1,273	100.00%	1,460	100.00%

Note: Includes only multi-vehicle alcohol related crashes

Section 6: – Alcohol Related Crashes

Table 6 – 4
Alcohol Related Crashes by First Harmful Event

First Harmful Event Type	Number of Crashes				Number of Persons	
	Total	Fatal	Injury	PDO	Killed	Injured
Collision with Motor Vehicle in Transport	1,879	73	833	973	88	1,535
Overturning	239	41	149	49	45	219
Collision with Pedestrian	155	70	82	3	72	94
Collision with Pedalcyclist	34	3	30	1	3	33
Collision with Animal	5	0	2	3	0	3
Collision with Fixed Object	1,636	74	602	960	82	760
Collision with Non-fixed Object*	299	3	84	212	3	94
Vehicle Fire or Explosion	0	0	0	0	0	0
Other Non-collision**	28	1	12	15	1	13
Unknown	666	1	297	368	1	454
TOTAL	4,941	266	2,091	2,584	295	3,205
*Includes Collision with Parked Vehicles, Trains, Railway Vehicles, and Work Zone Equipment						
**Includes Vehicle Immersion, Jackknife, and Cargo Loss or Shift						

Table 6 – 5
Alcohol Related Crashes by Vehicle Type

Motor Vehicle Type	Number of Vehicles				
	Total	Percent of Total	In Fatal Crashes	In Injury Crashes	In PDO Crashes
Passenger Cars (Sedans, Convertibles, etc.)	2,514	52.848%	66	987	1,461
Station Wagons	905	19.025%	45	368	492
Pickup Trucks	899	18.898%	48	367	484
Vans	35	0.736%	1	12	22
Truck Tractor (with or without Semi-Trailer)	3	0.063%	0	1	2
Concrete Mixer Trucks	0	0.000%	0	0	0
Dump Trucks	0	0.000%	0	0	0
Garbage Trucks	0	0.000%	0	0	0
Tanker Trucks	0	0.000%	0	0	0
Wrecker or Tow Trucks	0	0.000%	0	0	0
Other Truck Combinations	129	2.712%	2	55	72
School Bus	0	0.000%	0	0	0
Commercial or Non-Commercial Bus	0	0.000%	0	0	0
Motorcycle (two or three wheel)	150	3.153%	31	111	8
All Terrain Vehicle or Cycle	19	0.399%	7	12	0
Moped	1	0.021%	1	0	0
Recreational Vehicle	5	0.105%	0	4	1
Motor Home or House Car	1	0.021%	1	0	0
Fire Trucks	0	0.000%	0	0	0
Ambulances	0	0.000%	0	0	0
Other Types Of Vehicles	6	0.126%	1	3	2
Vehicle Type Unknown	90	1.892%	4	43	43
TOTAL	4,757	100.00%	207	1,963	2,587

Section 6: – Alcohol Related Crashes

Table 6 – 6
Lighting Conditions in Alcohol Related Crashes

Type of Lighting Conditions	Number of Crashes				Number of Persons	
	Total	Fatal	Injury	PDO	Killed	Injured
Daylight	1,411	61	645	705	71	1,037
Dawn	90	5	37	48	6	55
Dusk	125	11	59	55	13	101
Dark - Lighted	2,445	83	983	1,379	92	1,460
Dark - Not Lighted	795	74	355	366	80	521
Dark - Unknown Lighting	75	32	12	31	33	31
TOTAL	4,941	266	2,091	2,584	295	3,205

Table 6 – 7
Road Surface Conditions in Alcohol Related Crashes

Type of Road Surface Condition	Number of Drivers				Number of Persons	
	Total	In Fatal Crashes	In Injury Crashes	In PDO Crashes	Killed	Injured
Dry	4,370	164	1,832	2,374	233	2,957
Wet	274	9	103	162	11	170
Snow	8	0	3	5	0	5
Slush	5	0	1	4	0	1
Ice/Frost	2	0	2	0	0	1
Water (standing or moving)	1	0	1	0	0	1
Sand	6	0	3	3	0	7
Mud, Dirt, Gravel	45	9	15	21	10	33
Oil	1	0	0	1	0	0
Other	2	1	0	1	1	0
Unknown	43	24	3	16	40	30
TOTAL	4,757	207	1,963	2,587	295	3,205

Table 6 – 8
Gender of Drivers Involved in Alcohol Related Crashes

Gender of Driver	Number of Drivers							
	Total	Percent of Total	In Fatal Crashes	Percent of Fatal	In Injury Crashes	Percent of Injury	In PDO Crashes	Percent of PDO
Male	3,479	73.13%	171	82.61%	1,467	74.73%	1,841	71.16%
Female	1,257	26.42%	35	16.91%	493	25.11%	729	28.18%
Unknown	21	0.44%	1	0.48%	3	0.15%	17	0.66%
TOTAL	4,757	100.00%	207	100.00%	1,963	100.00%	2,587	100.00%

In total crashes across the state, 53.48% of the drivers were males. When alcohol was involved, males accounted for 73.13% of the drivers.

Section 6: – Alcohol Related Crashes

**Table 6 – 9
Driver Involvement by Age in Alcohol Related Crashes**

Driver Age Group	Number of Drivers							
	Total	Percent of Total	In Fatal Crashes	Percent of Fatal	In Injury Crashes	Percent of Injury	In PDO Crashes	Percent of PDO
15 & Under	6	0.13%	0	0.00%	4	0.20%	2	0.08%
16	11	0.23%	1	0.48%	3	0.15%	7	0.27%
17	33	0.69%	2	0.97%	9	0.46%	22	0.85%
18	81	1.70%	2	0.97%	29	1.48%	50	1.93%
19	111	2.33%	4	1.93%	45	2.29%	62	2.40%
20	110	2.31%	5	2.42%	42	2.14%	63	2.44%
21	255	5.36%	13	6.28%	104	5.30%	138	5.33%
22	186	3.91%	7	3.38%	81	4.13%	98	3.79%
23	231	4.86%	9	4.35%	94	4.79%	128	4.95%
24	214	4.50%	6	2.90%	100	5.09%	108	4.17%
25-34	1,429	30.04%	52	25.12%	573	29.19%	804	31.08%
35-44	837	17.60%	54	26.09%	341	17.37%	442	17.09%
45-54	643	13.52%	26	12.56%	277	14.11%	340	13.14%
55-64	394	8.28%	14	6.76%	164	8.35%	216	8.35%
65-74	133	2.80%	8	3.86%	64	3.26%	61	2.36%
75 & Older	46	0.97%	3	1.45%	26	1.32%	17	0.66%
Unknown	37	0.78%	1	0.48%	7	0.36%	29	1.12%
TOTAL	4,757	100.00%	207	100.00%	1,963	100.00%	2,587	100.00%

**Table 6 – 10
When Alcohol Related Crashes Occurred in 2015**

Time of Day	Total	Weekday	Weekend*
Daytime**	1,350	820	530
Nighttime	3,591	1,398	2,193
Total	4,941	2,218	2,723
*Weekend begins at 6:00 p.m. on Friday and continues through 6:00 a.m. Monday. All other times and days are considered Weekdays.			
**Daytime refers to the hours between 6:00 a.m. and 6:00 p.m.			

**Table 6 – 11
Safety Device Usage for Drinking Drivers**

Severity of Injury	Safety Device Not Used	Lap Belt	Lap & Shoulder Belt	Protective Helmet	Other	Unknown	Totals
No Injury	132	32	1,948	3	5	887	3,007
Unknown Injury	1	0	20	0	1	152	174
Possible Injury	67	7	265	4	1	179	523
Non-Incapacitating Injury	144	2	295	11	0	196	648
Incapacitating Injury	105	1	68	12	1	87	274
Fatal Injury	88	0	15	8	0	20	131
TOTALS	537	42	2,611	38	8	1,521	4,757

Section 6: – Alcohol Related Crashes

Table 6 – 12

Persons Killed and Injured in Alcohol Related Crashes

Age of Victim	Persons Killed			Persons Injured			
	Total	Male	Female	Total	Male	Female	Gender Unknown
0-4	2	0	2	50	32	18	0
5-9	1	1	0	54	27	27	0
10-14	0	0	0	47	19	28	0
15-19	12	7	5	215	128	87	0
20-24	44	35	9	593	387	206	0
25-34	71	46	25	804	514	290	0
35-44	63	52	11	518	331	187	0
45-54	47	34	13	422	265	157	0
55-64	34	22	12	278	175	103	0
65-74	13	9	4	129	76	53	0
75 & Older	7	4	3	42	29	13	0
Unknown	1	0	1	53	26	19	8
TOTAL	295	210	85	3,205	2,009	1,188	8

Table 6 – 13

Alcohol Related Crashes by County

County	Number of Crashes				Number of Persons	
	Total	Fatal	Injury	PDO	Killed	Injured
Apache	51	18	22	11	25	49
Cochise	62	4	25	33	6	34
Coconino	155	11	64	80	11	95
Gila	47	7	22	18	8	40
Graham	19	3	8	8	3	8
Greenlee	7	0	4	3	0	4
La Paz	12	2	6	4	2	14
Maricopa	3,098	121	1,275	1,702	131	1,937
Mohave	178	11	89	78	12	132
Navajo	78	14	30	34	19	68
Pima	698	38	309	351	40	478
Pinal	208	20	89	99	21	136
Santa Cruz	29	1	17	11	1	21
Yavapai	176	11	79	86	11	119
Yuma	123	5	52	66	5	70
TOTAL	4,941	266	2,091	2,584	295	3,205

Section 6: – Alcohol Related Crashes

Chart 6 – 1

All Alcohol Related Crashes vs. Fatal Alcohol Related Crashes by Day of Week

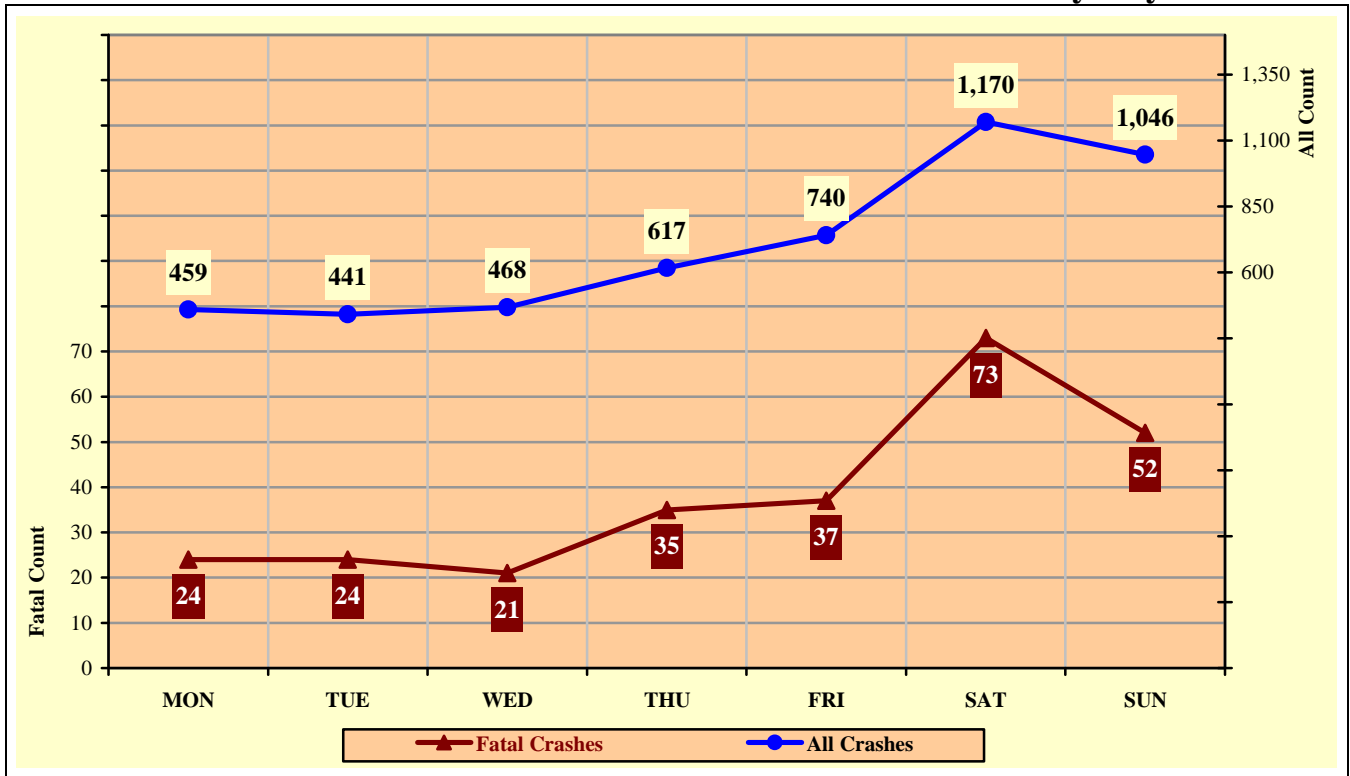
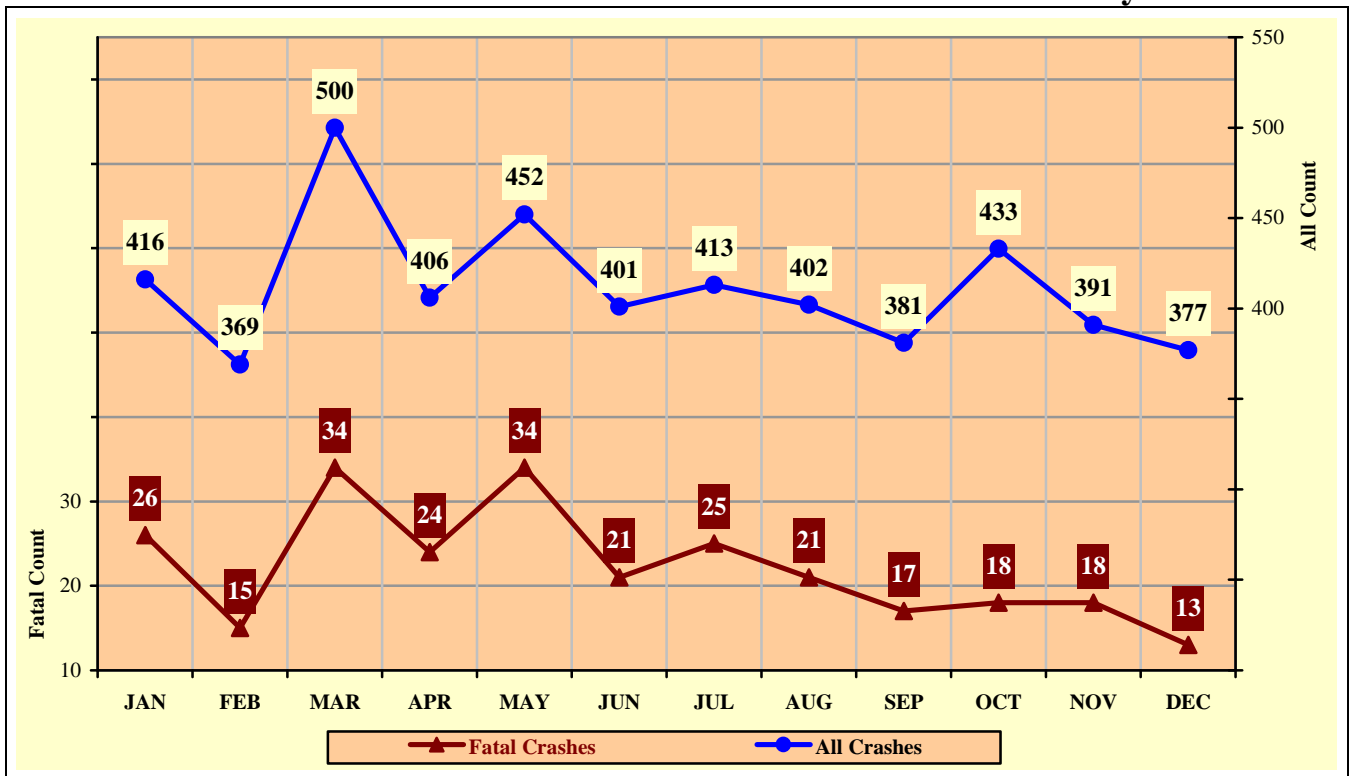


Chart 6 – 2

All Alcohol Related Crashes vs. Fatal Alcohol Related Crashes by Month



Section 6: – Alcohol Related Crashes

Chart 6 – 3

All Alcohol Related Crashes vs. Fatal Alcohol Related Crashes - Weekdays

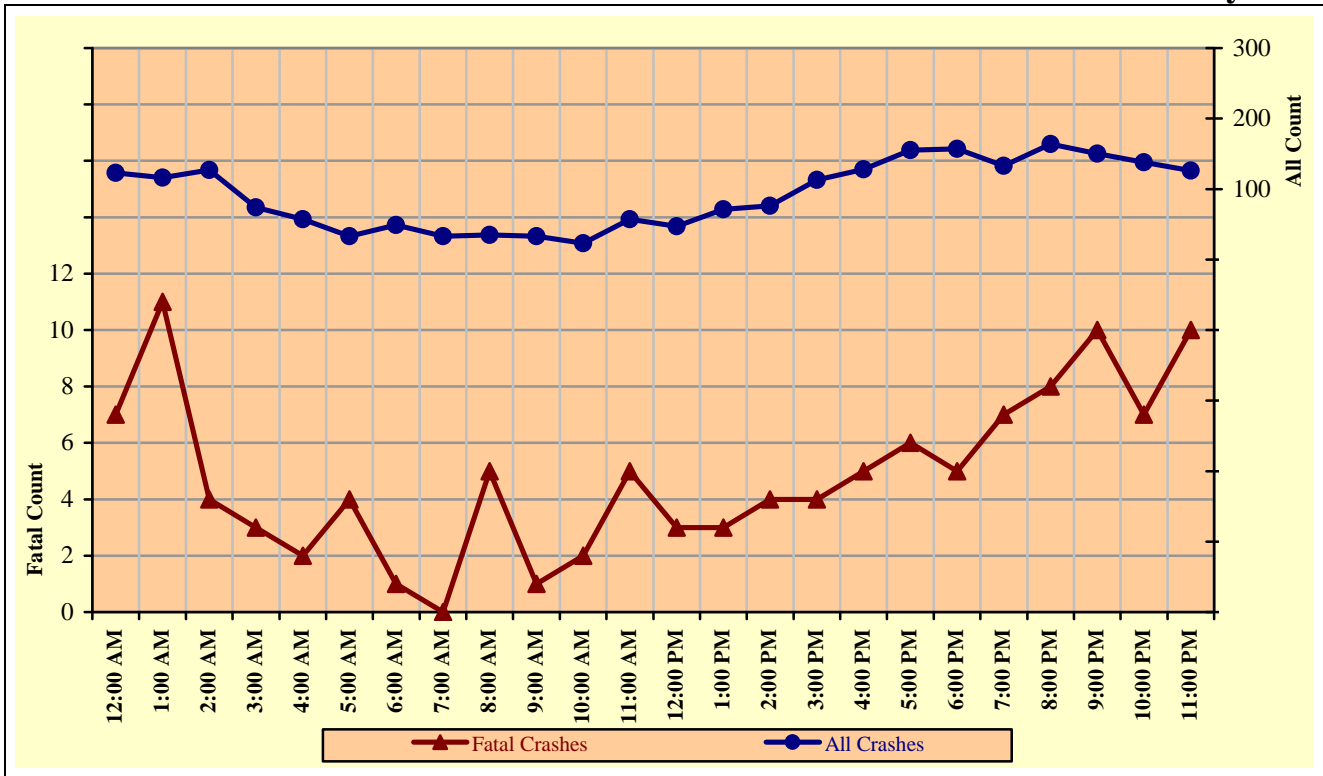
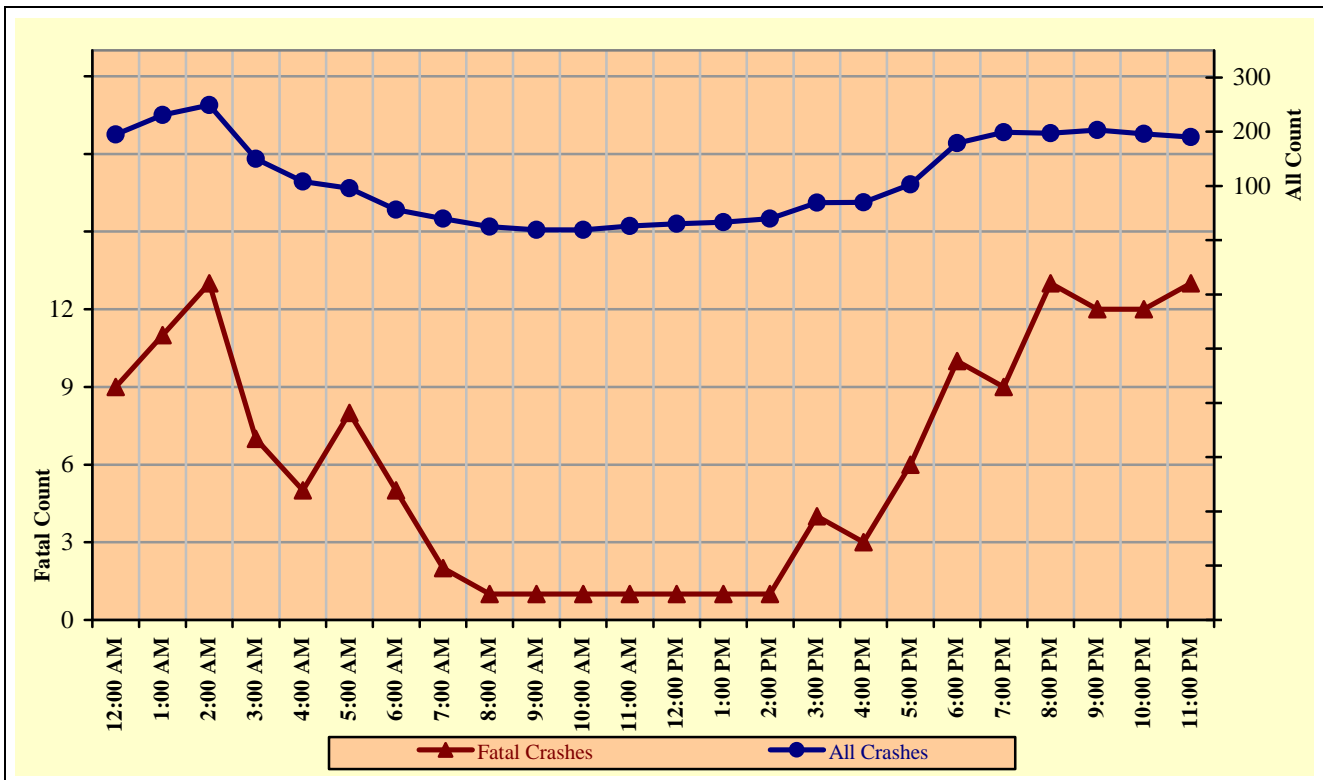


Chart 6 – 4

All Alcohol Related Crashes vs. Fatal Alcohol Related Crashes - Weekends



Section 6: – Alcohol Related Crashes

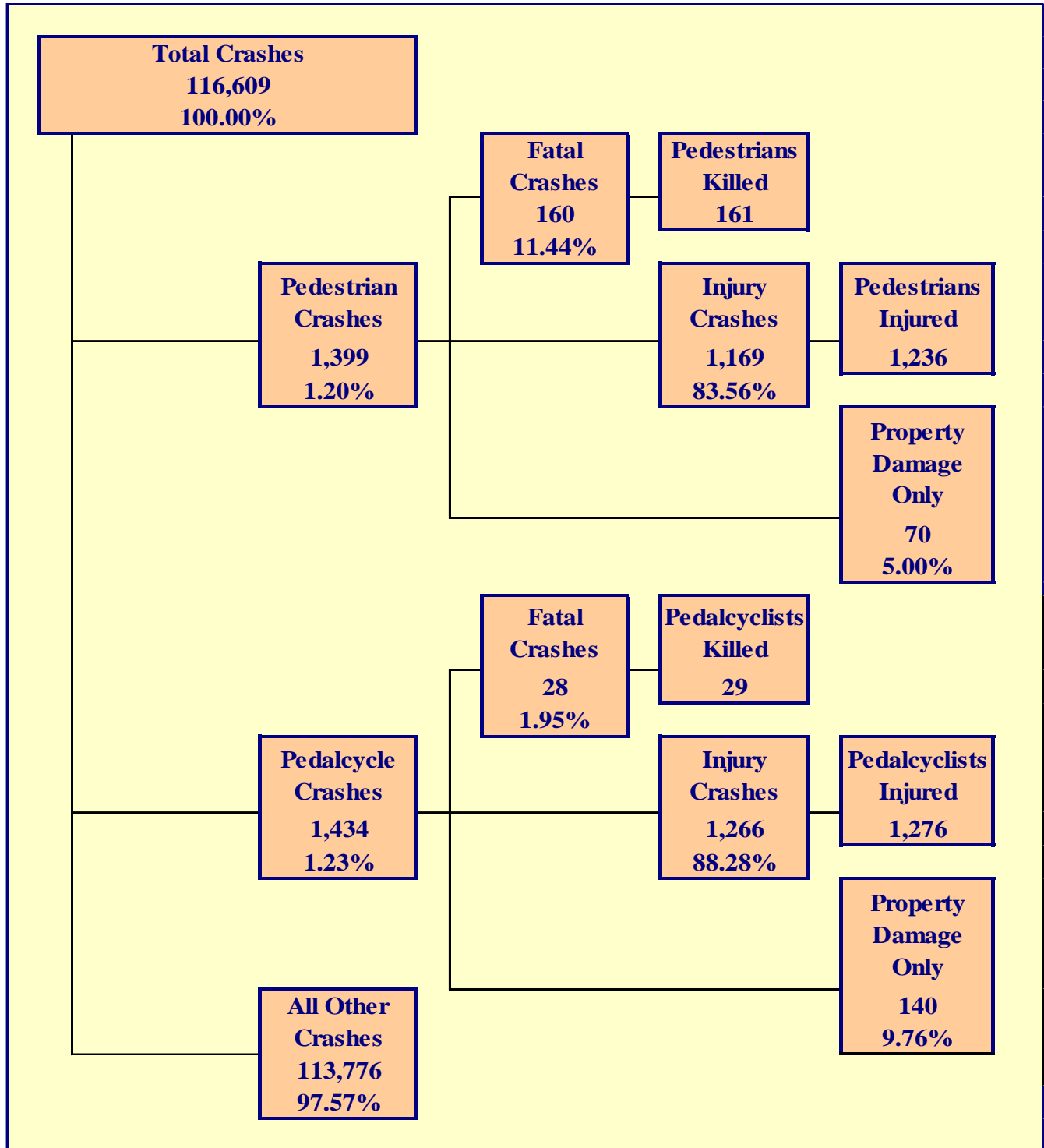
Table 6 – 14

Alcohol Related Crashes by Hour and Day of Week

Hour Beginning	Total Crashes		Monday		Tuesday		Wednesday		Thursday		Friday		Saturday		Sunday		Weekdays		Weekends	
	All	Fatal	All	Fatal	All	Fatal	All	Fatal	All	Fatal	All	Fatal	All	Fatal	All	Fatal	All	Fatal	All	Fatal
12:00 AM	318	16	36	1	25	2	22	1	37	3	39	1	77	4	82	4	123	7	195	9
1:00 AM	347	22	27	2	21	3	28	4	24	2	43	2	115	6	89	3	116	11	231	11
2:00 AM	376	17	33	0	23	1	25	0	42	0	37	3	107	8	109	5	127	4	249	13
3:00 AM	224	10	13	0	13	2	14	1	20	0	27	0	75	3	62	4	74	3	150	7
4:00 AM	165	7	13	0	10	0	9	1	19	1	19	0	43	3	52	2	57	2	108	5
5:00 AM	129	12	5	0	8	0	6	0	12	4	7	0	39	4	52	4	33	4	96	8
6:00 AM	105	6	7	0	11	1	7	0	13	0	11	0	24	4	32	1	49	1	56	5
7:00 AM	73	2	6	0	9	0	5	0	8	0	5	0	19	1	21	1	33	0	40	2
8:00 AM	60	6	9	2	7	0	2	0	9	2	8	1	14	0	11	1	35	5	25	1
9:00 AM	52	2	7	0	5	0	5	0	8	0	8	1	13	1	6	0	33	1	19	1
10:00 AM	42	3	1	0	6	1	6	0	4	0	6	1	13	1	6	0	23	2	19	1
11:00 AM	83	6	13	1	7	1	14	1	9	1	14	1	11	1	15	0	57	5	26	1
12:00 PM	77	4	13	1	9	1	4	0	9	0	12	1	16	0	14	1	47	3	30	1
1:00 PM	104	4	13	1	11	1	11	1	15	0	21	0	19	1	14	0	71	3	33	1
2:00 PM	116	5	12	2	9	0	18	0	21	1	16	1	22	1	18	0	76	4	40	1
3:00 PM	182	8	27	0	27	3	14	0	22	0	23	1	32	2	37	2	113	4	69	4
4:00 PM	198	8	17	2	25	0	33	0	27	1	26	2	34	2	36	1	128	5	70	3
5:00 PM	258	12	24	3	27	0	29	0	37	2	38	1	49	2	54	4	155	6	103	6
6:00 PM	336	15	30	3	43	0	44	0	40	2	59	2	59	7	61	1	157	5	179	10
7:00 PM	332	16	27	0	26	2	35	2	45	3	63	2	75	6	61	1	133	7	199	9
8:00 PM	361	21	31	0	46	3	43	3	44	2	56	4	83	4	58	5	164	8	197	13
9:00 PM	353	22	32	2	25	1	38	4	55	3	50	4	83	4	70	4	150	10	203	12
10:00 PM	334	19	30	2	26	0	30	1	52	4	74	5	73	4	49	3	138	7	196	12
11:00 PM	316	23	33	2	22	2	26	2	45	4	78	4	75	4	37	5	126	10	190	13
TOTAL	4,941	266	459	24	441	24	468	21	617	35	740	37	1,170	73	1,046	52	2,218	117	2,723	149

Crashes during Weekends accounted for 55.11% of all Alcohol Related crashes and 56.02% of Alcohol Related Fatal Crashes.

Crashes during Weekdays accounted for 44.89% of all Alcohol Related crashes and 43.98% of Alcohol Related Fatal Crashes.



Section 7: – Pedestrian and Pedalcyclist Crashes

Table 7 – 1

Pedestrians Killed and Injured By Age and Gender

Age Group	Pedestrians Killed			Pedestrians Injured			
	Total	Male	Female	Total	Male	Female	Gender Unknown
0-4	2	2	0	25	14	11	0
5-9	0	0	0	41	27	14	0
10-14	0	0	0	89	56	33	0
15-19	6	5	1	181	99	82	0
20-24	9	5	4	127	74	53	0
25-34	32	19	13	204	127	77	0
35-44	26	18	8	147	93	54	0
45-54	28	21	7	147	83	64	0
55-64	25	22	3	143	90	53	0
65-74	15	7	8	68	39	29	0
75 & Older	17	13	4	35	23	12	0
Unknown	1	0	1	29	13	10	6
TOTAL	161	112	49	1,236	738	492	6

Table 7 – 2

Pedestrian Crashes by Geographic Location

Category	Total	Urban	Percent of Total	Rural	Percent of Total
Total Crashes	1,399	1,240	88.63%	159	11.37%
Fatal Crashes	160	122	76.25%	38	23.75%
Injury Crashes	1,169	1,053	90.08%	116	9.92%
PDO Crashes	70	65	92.86%	5	7.14%
Pedestrians Killed	161	124	77.02%	37	22.98%
Pedestrians Injured	1,236	1,113	90.05%	123	9.95%

Table 7 – 3

Pedestrian Crash History

Year	Pedestrian Crashes	Percent of all Crashes	Pedestrians Killed	Percent of all Fatalities	Pedestrians Injured	Percent of all Injuries
2011	1,513	1.46%	154	18.62%	1,260	2.53%
2012	1,583	1.52%	131	15.96%	1,366	2.73%
2013	1,606	1.49%	160	18.85%	1,364	2.70%
2014	1,565	1.43%	155	20.03%	1,353	2.65%
2015	1,399	1.20%	161	17.99%	1,236	2.31%

Section 7: – Pedestrian and Pedalcyclist Crashes

Table 7 – 4
Pedestrians Killed by Age and Action

Pedestrian Action	Total	Age Group of Pedestrian											
		0-4	5-9	10-14	15-19	20-24	25-34	35-44	45-54	55-64	65-74	75 & Older	Unknown
Crossing Road	86	2	0	0	3	4	13	13	10	15	12	14	0
Walking With Traffic	13	0	0	0	0	0	6	2	3	1	1	0	0
Walking Against Traffic	9	0	0	0	0	1	2	2	1	1	0	2	0
Standing	11	0	0	0	1	0	3	1	3	3	0	0	0
Lying	9	0	0	0	0	0	4	2	2	1	0	0	0
Getting on/off Vehicle	0	0	0	0	0	0	0	0	0	0	0	0	0
Working on/pushing Veh	0	0	0	0	0	0	0	0	0	0	0	0	0
Working on Road	0	0	0	0	0	0	0	0	0	0	0	0	0
Other	10	0	0	0	0	1	1	2	3	1	1	1	0
Unknown	23	0	0	0	2	3	3	4	6	3	1	0	1
TOTAL	161	2	0	0	6	9	32	26	28	25	15	17	1

Table 7 – 5
Pedestrians Injured by Age and Action

Pedestrian Action	Total	Age Group of Pedestrian											
		0-4	5-9	10-14	15-19	20-24	25-34	35-44	45-54	55-64	65-74	75 & Older	Unknown
Crossing Road	778	16	29	60	125	71	126	79	91	90	51	24	16
Walking With Traffic	78	0	1	6	11	13	13	12	9	9	1	1	2
Walking Against Traffic	71	1	2	3	6	10	15	6	10	12	2	1	3
Standing	72	1	0	1	8	9	14	15	9	10	3	0	2
Lying	2	0	0	0	0	1	0	1	0	0	0	0	0
Getting on/off Vehicle	4	0	1	0	1	1	0	1	0	0	0	0	0
Working on/pushing Veh	11	0	0	0	0	0	5	3	2	0	0	0	1
Working on Road	7	0	0	0	0	1	0	3	0	2	0	1	0
Other	140	6	7	13	21	15	15	18	17	13	7	5	3
Unknown	73	1	1	6	9	6	16	9	9	7	4	3	2
TOTAL	1,236	25	41	89	181	127	204	147	147	143	68	35	29

Table 7 – 6
Pedestrian Physical Condition in Motor Vehicle Crashes

Type of Condition	Number of Pedestrians							
	Total	Percent of Total	In Fatal Crashes	Percent of Fatal	In Injury Crashes	Percent of Injury	In PDO Crashes	Percent of PDO
No Apparent Influence	991	66.42%	31	17.92%	918	73.62%	42	58.33%
Had Been Drinking	186	12.47%	66	38.15%	114	9.14%	6	8.33%
Appeared to be Under the Influence of Drugs*	25	1.68%	18	10.40%	6	0.48%	1	1.39%
Medications	1	0.07%	0	0.00%	0	0.00%	1	1.39%
Illness	7	0.47%	0	0.00%	6	0.48%	1	1.39%
Physical Impairment	7	0.47%	2	1.16%	5	0.40%	0	0.00%
Fell Asleep or Fatigued	0	0.00%	0	0.00%	0	0.00%	0	0.00%
Other	9	0.60%	0	0.00%	8	0.64%	1	1.39%
Unknown	266	17.83%	56	32.37%	190	15.24%	20	27.78%
TOTAL	1,492	100.00%	173	100.00%	1,247	100.00%	72	100.00%

*Illegal drugs or narcotics

Section 7: – Pedestrian and Pedalcyclist Crashes

Table 7 – 7

Lighting Conditions in Pedestrian Crashes

Type of Lighting Conditions	Number of Crashes			
	Total	Fatal	Injury	PDO
Daylight	690	23	622	45
Dawn	40	4	35	1
Dusk	49	8	41	0
Dark - Lighted	433	58	356	19
Dark - Not Lighted	144	36	104	4
Dark - Unknown Lighting	43	31	11	1
TOTAL	1,399	160	1,169	70

Table 7 – 8

Weather Conditions in Pedestrian Crashes

Type of Weather Conditions	Number of Crashes			
	Total	Fatal	Injury	PDO
Clear	1,172	99	1,013	60
Cloudy	127	15	109	3
Sleet/Hail	1	0	1	0
Rain	55	6	42	7
Snow	1	0	1	0
Severe Crosswinds	0	0	0	0
Blowing Sand, Soil, Dirt	0	0	0	0
Fog, Smog, Smoke	1	0	1	0
Blowing Snow	0	0	0	0
Other	0	0	0	0
Unknown	42	40	2	0
TOTAL	1,399	160	1,169	70

Table 7 – 9

Pedalcyclists Killed and Injured by Age and Gender

Age Group	Pedalcyclists Killed			Pedalcyclists Injured			
	Total	Male	Female	Total	Male	Female	Gender Unknown
0-4	0	0	0	2	1	1	0
5-9	0	0	0	27	21	6	0
10-14	0	0	0	107	88	19	0
15-19	0	0	0	168	121	47	0
20-24	3	1	2	186	126	60	0
25-34	6	5	1	223	166	57	0
35-44	5	5	0	119	95	24	0
45-54	6	5	1	217	172	45	0
55-64	5	4	1	133	113	20	0
65-74	3	3	0	64	57	7	0
75 & Older	1	1	0	16	15	1	0
Unknown	0	0	0	14	8	4	2
TOTAL	29	24	5	1,276	983	291	2

Section 7: – Pedestrian and Pedalcyclist Crashes

Table 7 – 10

Pedalcycle Crashes by Geographic Location

Category	Total	Urban	Percent of Total	Rural	Percent of Total
Total Crashes	1,434	1,290	89.96%	144	10.04%
Fatal Crashes	28	17	60.71%	11	39.29%
Injury Crashes	1,266	1,149	90.76%	117	9.24%
PDO Crashes	140	124	88.57%	16	11.43%
Pedalcyclists Killed	29	17	58.62%	12	41.38%
Pedalcyclists Injured	1,276	1,151	90.20%	125	9.80%

Table 7 – 11

Pedalcycle Crash History

Year	Pedalcycle Crashes	Percent of all Crashes	Pedalcyclists Killed	Percent of all Fatalities	Pedalcyclists Injured	Percent of all Injuries
2011	1,924	1.85%	23	2.78%	1,621	3.25%
2012	2,146	2.06%	18	2.19%	1,766	3.53%
2013	2,039	1.90%	29	3.42%	1,680	3.33%
2014	1,744	1.59%	29	3.75%	1,467	2.88%
2015	1,434	1.23%	29	3.24%	1,276	2.38%

Table 7 – 12

Lighting Conditions in Pedalcyclist Crashes

Type of Lighting Conditions	Number of Crashes			
	Total	Fatal	Injury	PDO
Daylight	1,104	14	989	101
Dawn	24	2	18	4
Dusk	47	1	40	6
Dark - Lighted	212	3	184	25
Dark - Not Lighted	40	4	32	4
Dark - Unknown Lighting	7	4	3	0
TOTAL	1,434	28	1,266	140

Table 7 – 13

Weather Conditions in Pedalcyclist Crashes

Type of Weather Conditions	Number of Crashes			
	Total	Fatal	Injury	PDO
Clear	1,220	20	1,082	118
Cloudy	174	2	153	19
Sleet/Hail	1	0	1	0
Rain	26	0	24	2
Snow	1	0	1	0
Severe Crosswinds	0	0	0	0
Blowing Sand, Soil, Dirt	0	0	0	0
Fog, Smog, Smoke	1	0	0	1
Blowing Snow	0	0	0	0
Other	0	0	0	0
Unknown	11	6	5	0
TOTAL	1,434	28	1,266	140

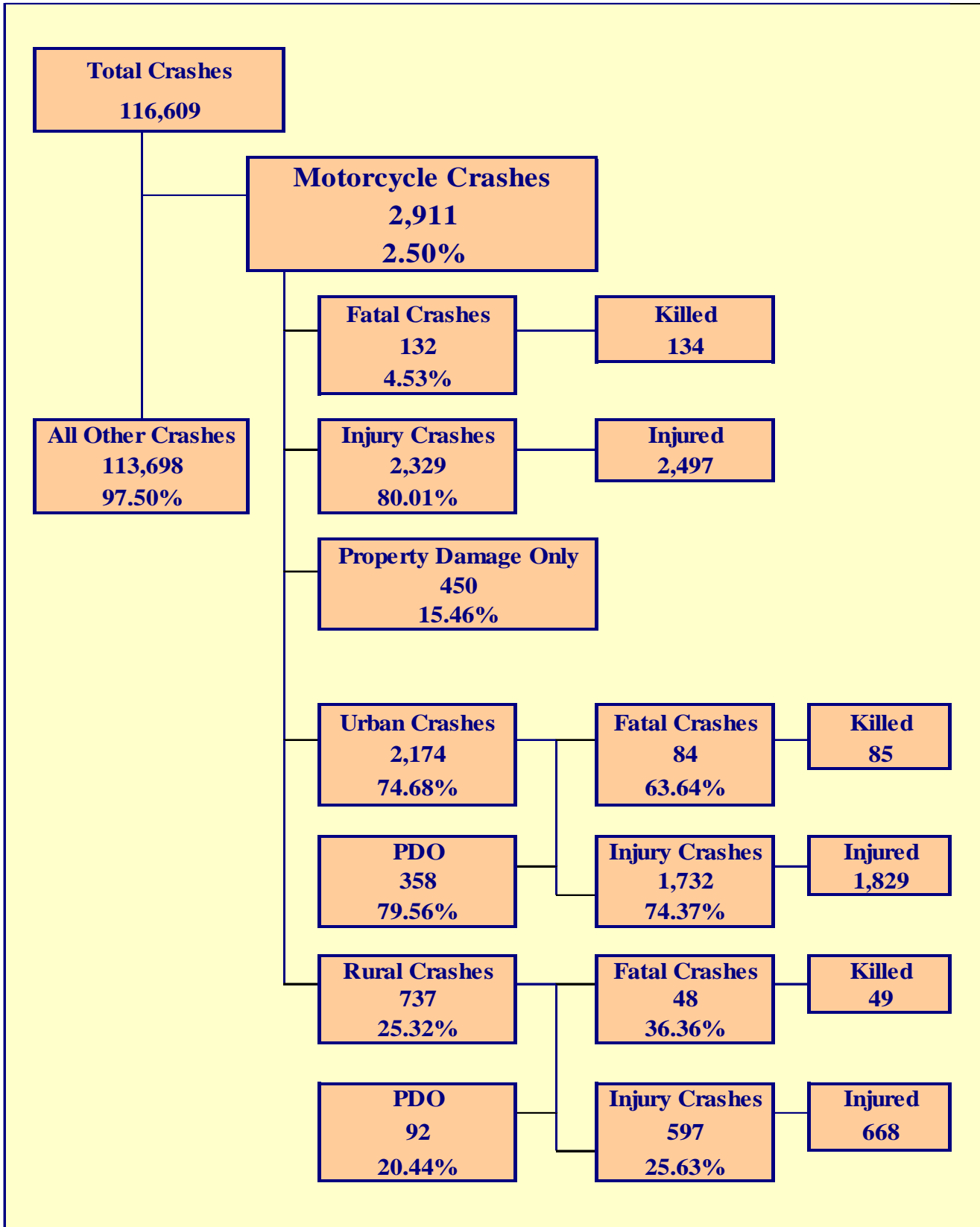
Section 7: – Pedestrian and Pedalcyclist Crashes

Table 7 – 14
Pedestrian Crashes by County

County	Number of Crashes				Number of Pedestrians	
	Total	Fatal	Injury	PDO	Killed	Injured
Apache	6	6	0	0	6	1
Cochise	5	0	5	0	0	5
Coconino	35	7	26	2	7	29
Gila	7	2	5	0	2	5
Graham	4	2	2	0	2	2
Greenlee	0	0	0	0	0	0
La Paz	0	0	0	0	0	0
Maricopa	978	103	827	48	105	872
Mohave	22	6	15	1	5	16
Navajo	11	3	8	0	3	8
Pima	233	19	200	14	19	214
Pinal	43	9	32	2	9	33
Santa Cruz	6	0	5	1	0	5
Yavapai	14	1	13	0	1	13
Yuma	35	2	31	2	2	33
TOTAL	1,399	160	1,169	70	161	1,236

Table 7 – 15
Pedalcyclist Crashes by County

County	Number of Crashes				Number of Pedalcyclists	
	Total	Fatal	Injury	PDO	Killed	Injured
Apache	2	0	2	0	0	7
Cochise	6	0	5	1	0	5
Coconino	40	1	32	7	1	34
Gila	8	0	7	1	0	7
Graham	2	0	2	0	0	2
Greenlee	0	0	0	0	0	0
La Paz	4	1	3	0	1	3
Maricopa	993	15	886	92	15	885
Mohave	15	1	14	0	2	14
Navajo	4	0	4	0	0	4
Pima	281	5	245	31	5	248
Pinal	33	4	25	4	4	25
Santa Cruz	1	0	1	0	0	1
Yavapai	15	1	12	2	1	13
Yuma	30	0	28	2	0	28
TOTAL	1,434	28	1,266	140	29	1,276



Section 8: – Motorcycle (MC) Crashes

Chart 8 – 1
MC Fatalities by Year

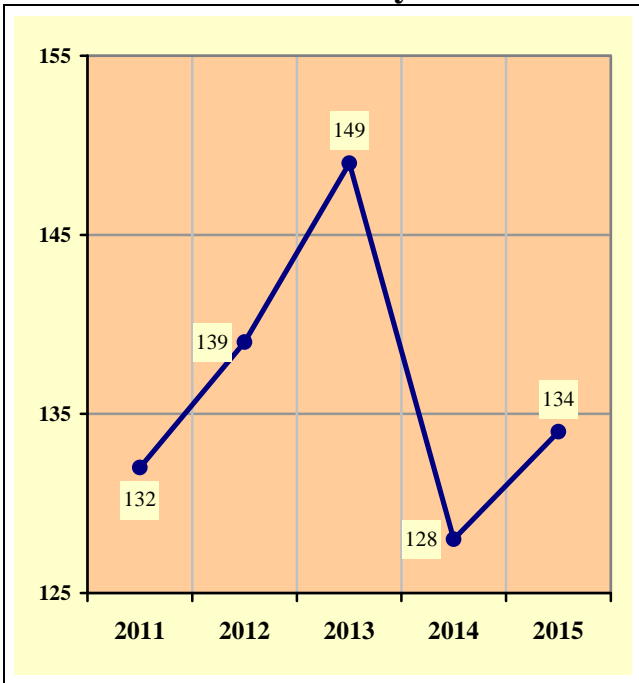
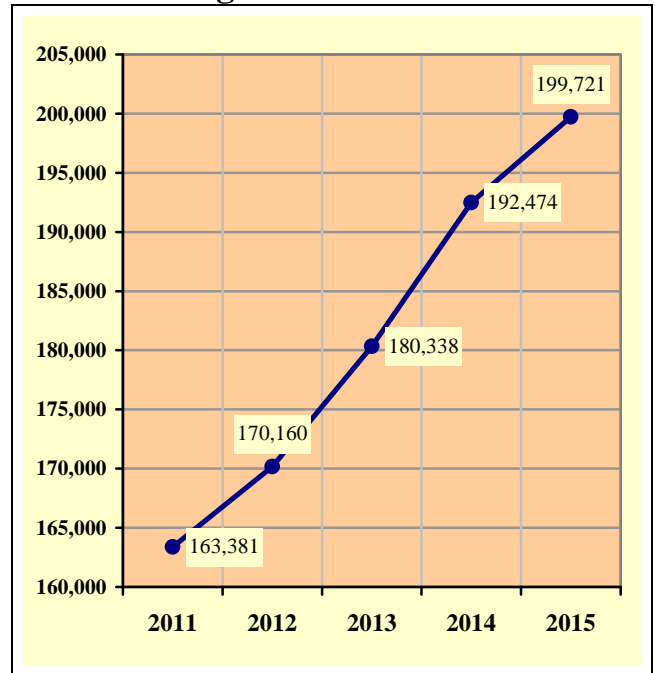


Chart 8 – 2
MC Registrations in Arizona



Total Point-in-Time of Registered Motorcycles at the end of Calendar year 2015.
(Source: MVD - MV988 MV630419 Currently Registered Vehicles by County Listing (motorcycle sub category), reports dated 12/31/15.)

Chart 8 – 3
Fatality Rate per Registered MC

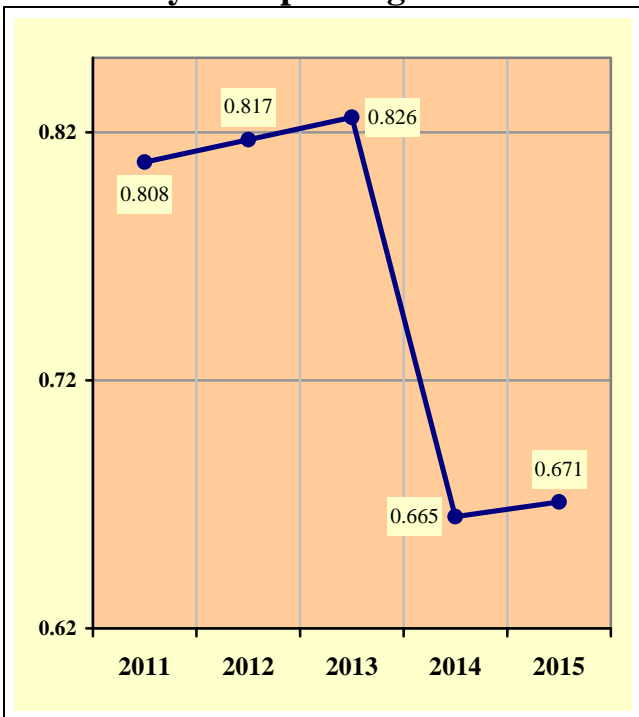
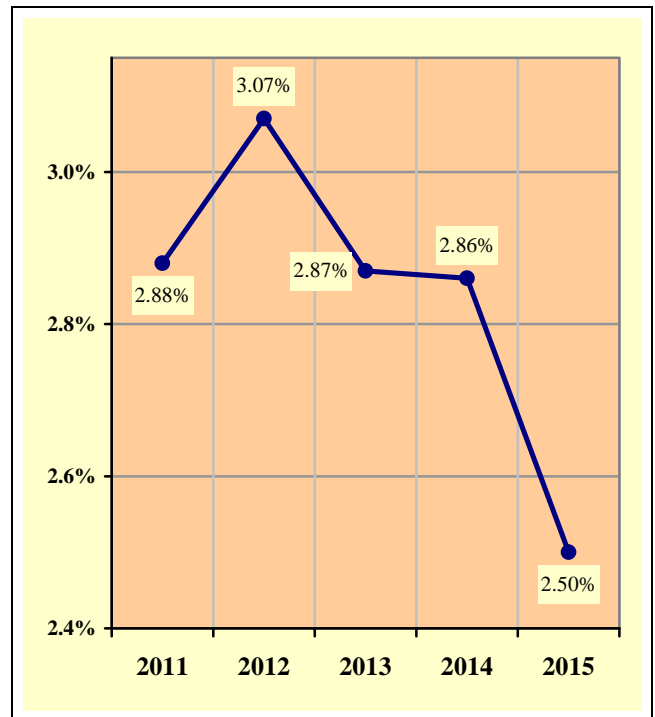


Chart 8 – 4
Percent of MC Crashes to All Crashes



Section 8: – Motorcycle (MC) Crashes

**Table 8 – 1
MC Crashes by First Harmful Event**

First Harmful Event Type	Number of Crashes			
	Total	Fatal	Injury	PDO
Collision with Motor Vehicle in Transport	1,428	74	1,075	279
Overtuning	615	26	540	49
Collision with Pedestrian	7	1	5	1
Collision with Pedalcyclist	6	0	6	0
Collision with Animal	35	0	28	7
Collision with Fixed Object	312	27	267	18
Collision with Non-fixed Object*	69	1	39	29
Vehicle Fire or Explosion	0	0	0	0
Other Non-collision**	61	0	53	8
Unknown	378	3	316	59
TOTAL	2,911	132	2,329	450
*Includes Collision with Parked Vehicles, Trains, Railway Vehicles, and Work Zone Equipment				
**Includes Vehicle Immersion, Jackknife, and Cargo Loss or Shift				

**Table 8 – 2
Lighting Conditions in MC Crashes**

Type of Lighting Conditions	Number of Crashes			
	Total	Fatal	Injury	PDO
Daylight	2,002	78	1,617	307
Dawn	54	1	41	12
Dusk	83	2	68	13
Dark - Lighted	601	27	482	92
Dark - Not Lighted	156	15	117	24
Dark - Unknown Lighting	15	9	4	2
TOTAL	2,911	132	2,329	450

**Table 8 – 3
Road Surface Conditions in MC Crashes**

Type of Road Surface Condition	Number of Operators			
	Total	In Fatal Crashes	In Injury Crashes	In PDO Crashes
Dry	2,827	115	2,282	430
Wet	86	1	70	15
Snow	3	0	3	0
Slush	1	0	1	0
Ice/Frost	2	0	1	1
Water (standing or moving)	0	0	0	0
Sand	1	0	1	0
Mud, Dirt, Gravel	27	0	24	3
Oil	7	0	6	1
Other	0	0	0	0
Unknown	34	21	5	8
TOTAL	2,988	137	2,393	458

Section 8: – Motorcycle (MC) Crashes

Table 8 – 4

MC Crashes by Geographic Location

Category	Total	Urban	Percent of Total	Rural	Percent of Total
Total Crashes	2,911	2,174	74.68%	737	25.32%
Fatal Crashes	132	84	63.64%	48	36.36%
Injury Crashes	2,329	1,732	74.37%	597	25.63%
PDO Crashes	450	358	79.56%	92	20.44%
Persons Killed	134	85	63.43%	49	36.57%
Persons Injured	2,497	1,829	73.25%	668	26.75%

Table 8 – 5

Operator Involvement by Age in MC Crashes

Operator Age Group	Number of Operators							
	Total	Percent of Total	In Fatal Crashes	Percent of Fatal	In Injury Crashes	Percent of Injury	In PDO Crashes	Percent of PDO
15 & Under	7	0.23%	0	0.00%	6	0.25%	1	0.22%
16	9	0.30%	0	0.00%	9	0.38%	0	0.00%
17	16	0.54%	0	0.00%	14	0.59%	2	0.44%
18	46	1.54%	1	0.73%	36	1.50%	9	1.97%
19	80	2.68%	3	2.19%	72	3.01%	5	1.09%
20	93	3.11%	2	1.46%	78	3.26%	13	2.84%
21	93	3.11%	2	1.46%	76	3.18%	15	3.28%
22	88	2.95%	9	6.57%	67	2.80%	12	2.62%
23	99	3.31%	3	2.19%	82	3.43%	14	3.06%
24	102	3.41%	4	2.92%	83	3.47%	15	3.28%
25-34	673	22.52%	19	13.87%	567	23.69%	87	19.00%
35-44	462	15.46%	25	18.25%	373	15.59%	64	13.97%
45-54	557	18.64%	33	24.09%	440	18.39%	84	18.34%
55-64	367	12.28%	18	13.14%	290	12.12%	59	12.88%
65-74	197	6.59%	14	10.22%	160	6.69%	23	5.02%
75 & Older	35	1.17%	3	2.19%	26	1.09%	6	1.31%
Unknown	64	2.14%	1	0.73%	14	0.59%	49	10.70%
TOTAL	2,988	100.00%	137	100.00%	2,393	100.00%	458	100.00%

Table 8 – 6

MC Operator Physical Condition

Type of Condition	Number of Operators							
	Total	Percent of Total	In Fatal Crashes	Percent of Fatal	In Injury Crashes	Percent of Injury	In PDO Crashes	Percent of PDO
No Apparent Influence	2,559	85.64%	45	32.85%	2,118	88.51%	396	86.46%
Had Been Drinking	150	5.02%	31	22.63%	111	4.64%	8	1.75%
Appeared to be Under the Influence of Drugs*	16	0.54%	8	5.84%	7	0.29%	1	0.22%
Medications	1	0.03%	0	0.00%	1	0.04%	0	0.00%
Illness	10	0.33%	0	0.00%	8	0.33%	2	0.44%
Physical Impairment	3	0.10%	0	0.00%	3	0.13%	0	0.00%
Fell Asleep or Fatigued	2	0.07%	0	0.00%	2	0.08%	0	0.00%
Other	11	0.37%	1	0.73%	5	0.21%	5	1.09%
Unknown	236	7.90%	52	37.96%	138	5.77%	46	10.04%
TOTAL	2,988	100.00%	137	100.00%	2,393	100.00%	458	100.00%

*Illegal drugs or narcotics

Section 8: – Motorcycle (MC) Crashes

Table 8 – 7

MC Operators Involved in Fatal Crashes by License Status

License Status	2013		2014		2015	
	Number of Operators	Percent of Total	Number of Operators	Percent of Total	Number of Operators	Percent of Total
No license	5	3.38%	2	1.55%	3	2.22%
Invalid	26	17.57%	22	17.05%	25	18.52%
Valid	112	75.68%	101	78.29%	102	75.56%
Unknown	5	3.38%	4	3.10%	5	3.70%
TOTALS	148	100.00%	129	100.00%	135	100.00%
Note: Includes only motorcycle operators involved in fatal crashes						
Source: FARS Data Queries (http://www-fars.nhtsa.dot.gov)						

Table 8 – 8

MC Operator's Helmet Use

Severity of Injury	Helmet Used	Percent of Total	Helmet Not Used	Percent of Total	Unknown	Percent of Total	Total	Percent of Total
No Injury	224	14.88%	83	12.12%	185	23.18%	492	16.47%
Unknown Injury	10	0.66%	0	0.00%	29	3.63%	39	1.31%
Possible Injury	243	16.15%	94	13.72%	154	19.30%	491	16.43%
Non-Incapacitating Injury	690	45.85%	273	39.85%	289	36.22%	1,252	41.90%
Incapacitating Injury	284	18.87%	176	25.69%	124	15.54%	584	19.54%
Fatal Injury	54	3.59%	59	8.61%	17	2.13%	130	4.35%
TOTALS	1,505	100.00%	685	100.00%	798	100.00%	2,988	100.00%

Table 8 – 9

MC Passenger's Helmet Use

Severity of Injury	Helmet Used	Percent of Total	Helmet Not Used	Percent of Total	Unknown	Percent of Total	Total	Percent of Total
No Injury	17	17.17%	7	12.07%	12	21.43%	36	16.90%
Unknown Injury	1	1.01%	0	0.00%	2	3.57%	3	1.41%
Possible Injury	18	18.18%	7	12.07%	12	21.43%	37	17.37%
Non-Incapacitating Injury	41	41.41%	23	39.66%	20	35.71%	84	39.44%
Incapacitating Injury	21	21.21%	19	32.76%	9	16.07%	49	23.00%
Fatal Injury	1	1.01%	2	3.45%	1	1.79%	4	1.88%
TOTALS	99	100.00%	58	100.00%	56	100.00%	213	100.00%

Section 8: – Motorcycle (MC) Crashes

Table 8 – 10

MC Operators and Passengers Killed and Injured

Age of Victim	Persons Killed			Persons Injured			
	Total	Male	Female	Total	Male	Female	Gender Unknown
0-4	0	0	0	0	0	0	0
5-9	0	0	0	0	0	0	0
10-14	0	0	0	6	5	1	0
15-19	4	4	0	147	126	21	0
20-24	17	16	1	404	373	31	0
25-34	19	17	2	590	526	64	0
35-44	26	23	3	396	344	52	0
45-54	34	30	4	448	378	70	0
55-64	17	16	1	302	266	36	0
65-74	14	14	0	163	145	18	0
75 & Older	3	2	1	28	25	3	0
Unknown	0	0	0	13	8	4	1
TOTAL	134	122	12	2,497	2,196	300	1

Table 8 – 11

MC Operator Violations

Type of Violation or Behavior	Number of Operators							
	Total	Percent of Total	In Fatal Crashes	Percent of Fatal	In Injury Crashes	Percent of Injury	In PDO Crashes	Percent of PDO
No Improper Action	1,395	46.69%	33	24.09%	1,127	47.10%	235	51.31%
Speed too Fast for Conditions	785	26.27%	44	32.12%	651	27.20%	90	19.65%
Exceeded Lawful Speed	61	2.04%	8	5.84%	50	2.09%	3	0.66%
Failed to Yield Right-Of-Way	61	2.04%	0	0.00%	50	2.09%	11	2.40%
Followed Too Closely	99	3.31%	3	2.19%	69	2.88%	27	5.90%
Ran Stop Sign	11	0.37%	1	0.73%	8	0.33%	2	0.44%
Disregarded Traffic Signal	51	1.71%	5	3.65%	40	1.67%	6	1.31%
Made Improper Turn	28	0.94%	0	0.00%	22	0.92%	6	1.31%
Drove in Opposing Lane	25	0.84%	4	2.92%	18	0.75%	3	0.66%
Knowingly Operated with Faulty or Missing Equipment	7	0.23%	0	0.00%	7	0.29%	0	0.00%
Required Motorcycle Safety Equipment Not Used	8	0.27%	0	0.00%	7	0.29%	1	0.22%
Passed in No-Passing Zone	8	0.27%	0	0.00%	8	0.33%	0	0.00%
Unsafe Lane Change	42	1.41%	1	0.73%	29	1.21%	12	2.62%
Failed to Keep in Proper Lane	63	2.11%	8	5.84%	51	2.13%	4	0.87%
Disregarded Pavement Markings	4	0.13%	0	0.00%	4	0.17%	0	0.00%
Other Unsafe Passing	22	0.74%	1	0.73%	17	0.71%	4	0.87%
Inattention/Distraction	16	0.54%	0	0.00%	15	0.63%	1	0.22%
Electronic Communications Device	0	0.00%	0	0.00%	0	0.00%	0	0.00%
Other	93	3.11%	5	3.65%	72	3.01%	16	3.49%
Unknown	209	6.99%	24	17.52%	148	6.18%	37	8.08%
TOTAL	2,988	100.00%	137	100.00%	2,393	100.00%	458	100.00%

Section 8: – Motorcycle (MC) Crashes

Chart 8 – 5

All MC Crashes vs. Fatal MC Crashes by Time of Day - Weekdays

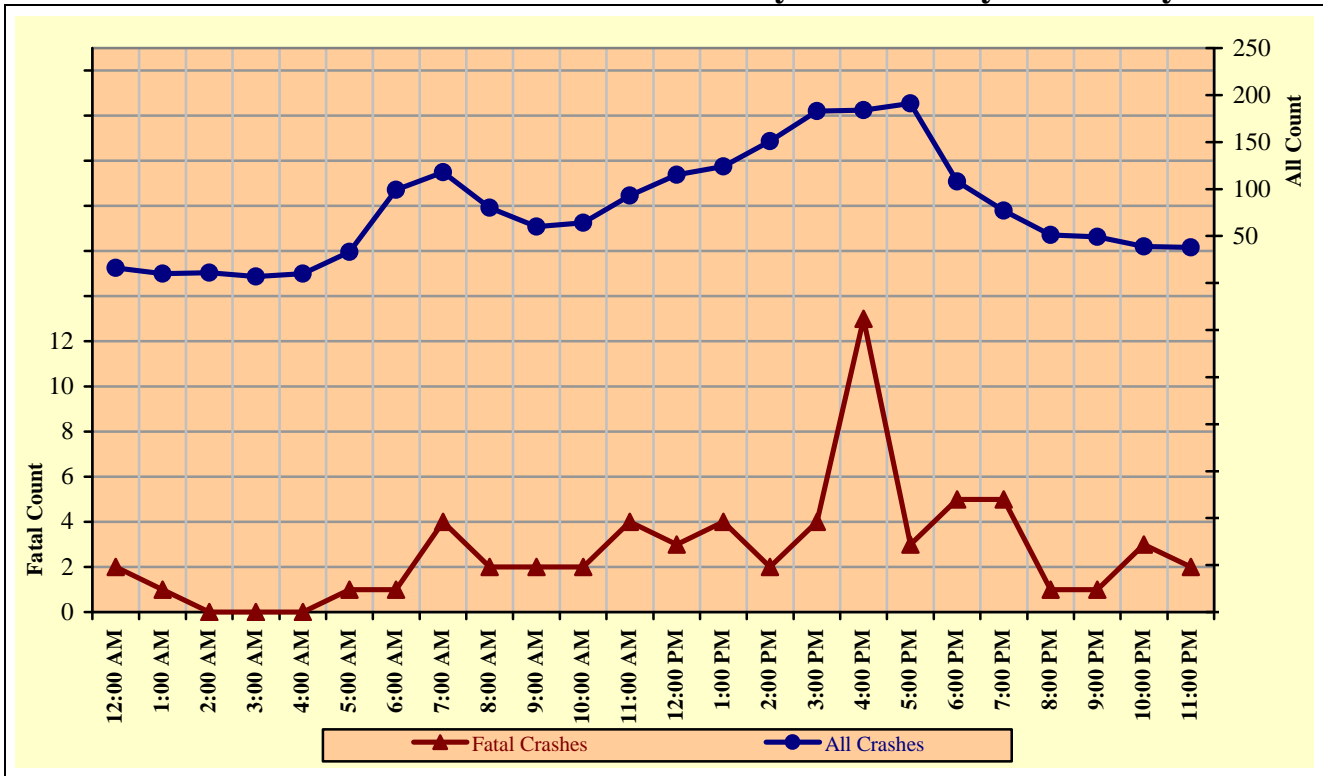
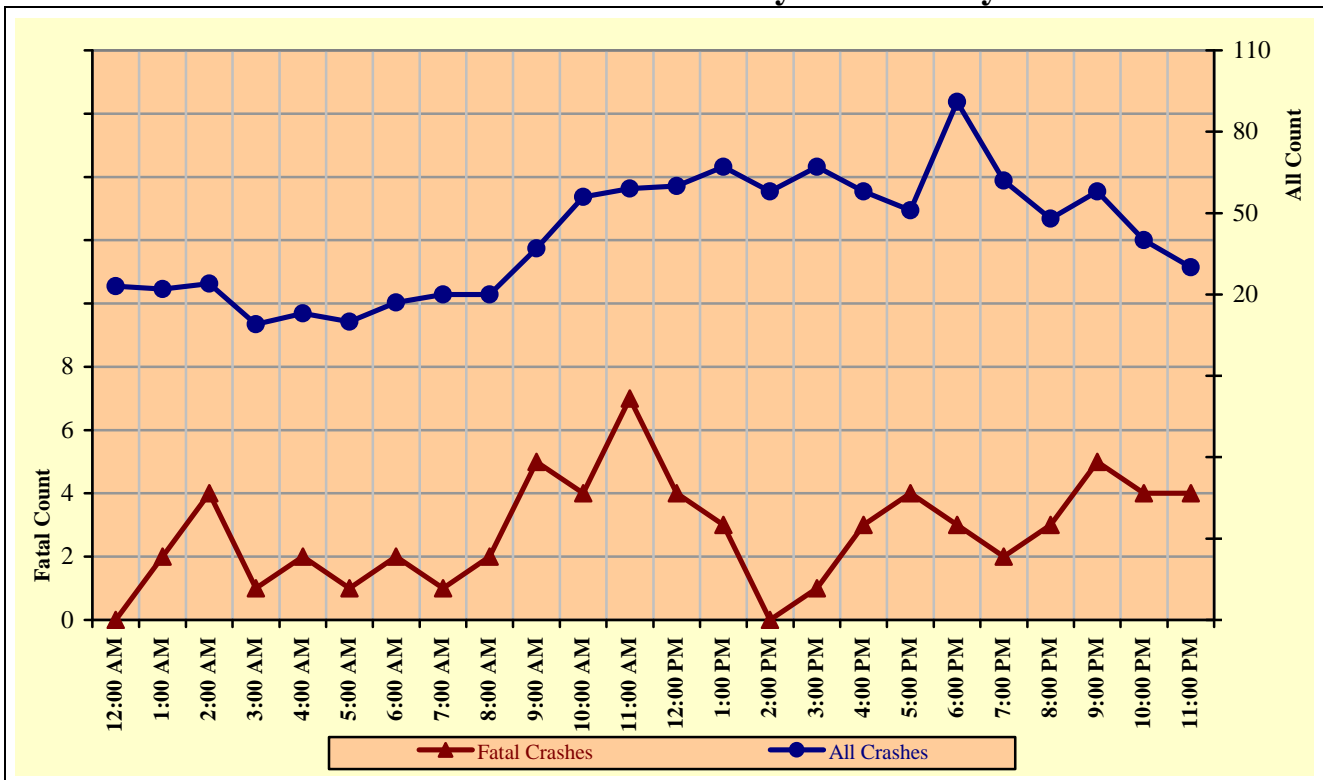


Chart 8 – 6

All MC Crashes vs. Fatal MC Crashes by Time of Day - Weekends



Section 8: – Motorcycle (MC) Crashes

Chart 8 – 7
All MC Crashes vs. Fatal MC Crashes by Day of Week

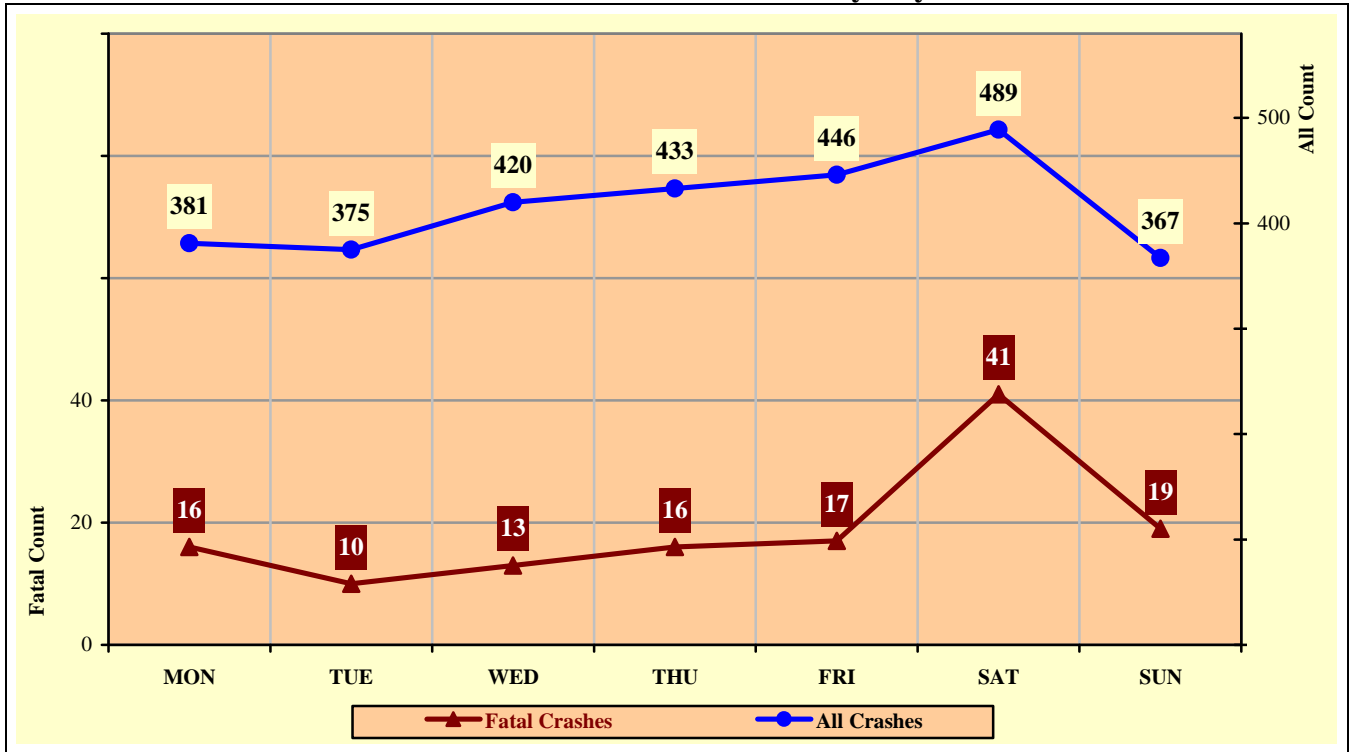
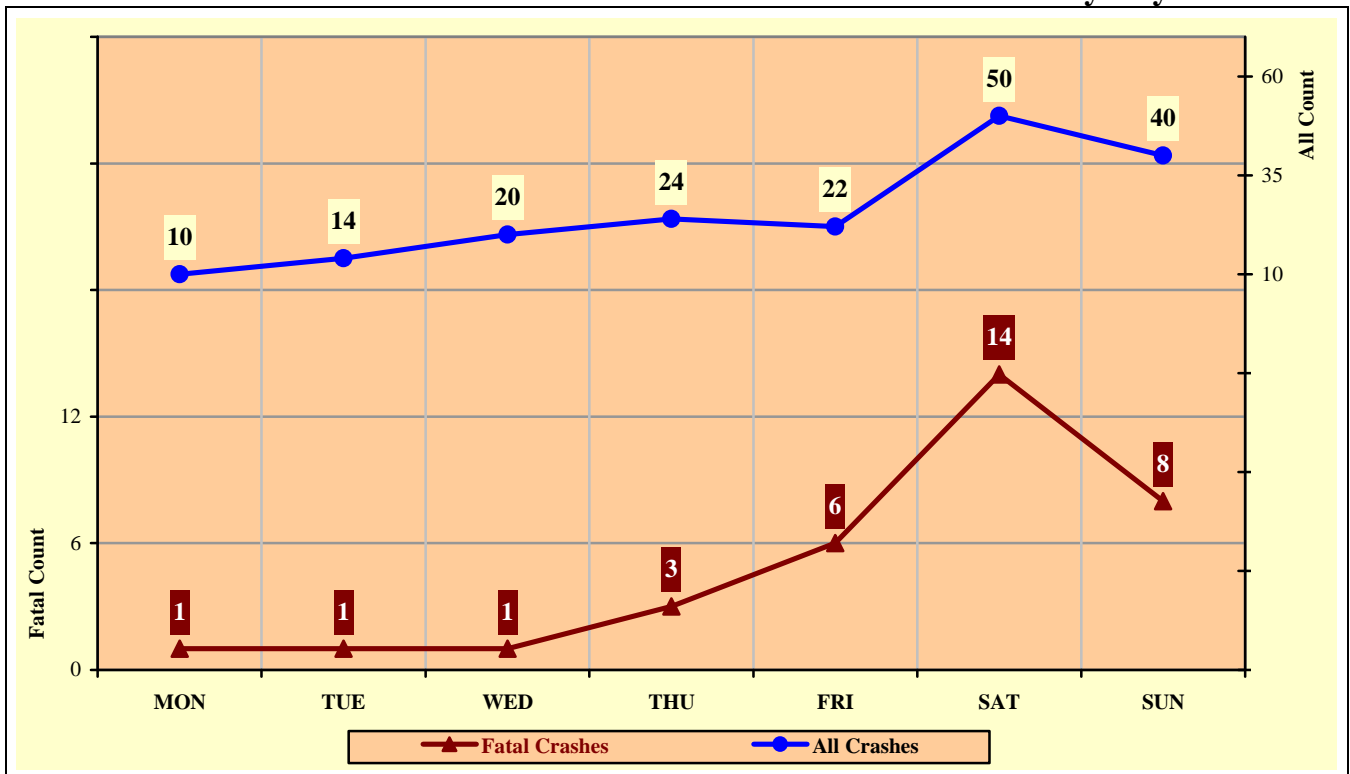


Chart 8 – 8
Alcohol Related MC Crashes vs. Fatal Alcohol Related MC Crashes by Day of Week



Section 8: – Motorcycle (MC) Crashes

Table 8 – 12
MC Crashes by Hour and Day of Week

Hour Beginning	Total Crashes		Monday		Tuesday		Wednesday		Thursday		Friday		Saturday		Sunday		Weekdays		Weekends	
	All	Fatal	All	Fatal	All	Fatal	All	Fatal	All	Fatal	All	Fatal	All	Fatal	All	Fatal	All	Fatal	All	Fatal
12:00 AM	39	2	3	0	1	1	4	0	4	1	7	0	12	0	8	0	16	2	23	0
1:00 AM	32	3	2	0	2	0	3	0	3	0	2	1	16	1	4	1	10	1	22	2
2:00 AM	35	4	3	0	3	0	3	0	1	0	4	0	9	4	12	0	11	0	24	4
3:00 AM	16	1	1	0	1	0	3	0	1	0	2	0	4	0	4	1	7	0	9	1
4:00 AM	23	2	3	0	2	0	3	0	3	0	2	0	7	2	3	0	10	0	13	2
5:00 AM	43	2	5	0	9	0	11	0	7	1	6	0	3	0	2	1	33	1	10	1
6:00 AM	116	3	21	0	23	1	19	0	23	0	13	0	10	2	7	0	99	1	17	2
7:00 AM	138	5	32	2	25	0	19	0	18	0	24	2	14	1	6	0	118	4	20	1
8:00 AM	100	4	13	0	16	0	14	0	24	2	13	0	13	2	7	0	80	2	20	2
9:00 AM	97	7	14	1	10	0	9	1	11	0	16	0	23	5	14	0	60	2	37	5
10:00 AM	120	6	20	0	9	0	10	1	15	1	10	0	30	3	26	1	64	2	56	4
11:00 AM	152	11	27	1	14	2	19	0	11	0	22	1	33	5	26	2	93	4	59	7
12:00 PM	175	7	14	1	18	0	21	0	31	0	31	2	33	1	27	3	115	3	60	4
1:00 PM	191	7	23	0	18	0	25	1	29	2	29	1	38	2	29	1	124	4	67	3
2:00 PM	209	2	24	0	38	0	37	1	24	1	28	0	30	0	28	0	151	2	58	0
3:00 PM	250	5	31	0	31	0	35	2	41	2	45	0	37	1	30	0	183	4	67	1
4:00 PM	242	16	38	5	39	2	34	1	38	3	35	2	27	2	31	1	184	13	58	3
5:00 PM	242	7	29	1	31	0	51	1	50	0	30	1	27	2	24	2	191	3	51	4
6:00 PM	199	8	31	3	24	1	24	0	29	1	37	0	31	1	23	2	108	5	91	3
7:00 PM	139	7	14	1	16	1	24	2	23	1	27	1	23	1	12	0	77	5	62	2
8:00 PM	99	4	12	0	17	1	12	0	10	0	16	2	16	0	16	1	51	1	48	3
9:00 PM	107	6	7	1	7	0	15	0	20	0	15	1	24	4	19	0	49	1	58	5
10:00 PM	79	7	5	0	11	0	15	3	8	0	19	1	14	0	7	3	39	3	40	4
11:00 PM	68	6	9	0	10	1	10	0	9	1	13	2	15	2	2	0	38	2	30	4
TOTAL	2,911	132	381	16	375	10	420	13	433	16	446	17	489	41	367	19	1,911	65	1,000	67

Crashes during Weekends accounted for 34.35% of all MC crashes and 50.76% of Fatal MC Crashes.

Crashes during Weekdays accounted for 65.65% of all MC crashes and 49.24% of Fatal MC Crashes.

Section 8: – Motorcycle (MC) Crashes

Table 8 – 13

MC Crashes by County

County	Number of Crashes				Number of Persons	
	Total	Fatal	Injury	PDO	Killed	Injured
Apache	11	1	9	1	1	10
Cochise	34	2	22	10	3	21
Coconino	64	2	52	10	2	56
Gila	47	6	36	5	6	41
Graham	17	1	12	4	1	13
Greenlee	12	0	10	2	0	11
La Paz	8	2	4	2	2	5
Maricopa	1,939	85	1,534	320	86	1,619
Mohave	116	7	93	16	7	108
Navajo	21	0	17	4	0	19
Pima	311	11	266	34	11	284
Pinal	117	4	96	17	4	107
Santa Cruz	12	0	10	2	0	11
Yavapai	132	9	109	14	9	127
Yuma	70	2	59	9	2	65
TOTAL	2,911	132	2,329	450	134	2,497

Table 8 – 14

Manner of Collision in MC Crashes

Manner of Collision Type	Number of Crashes							
	Total	Percent of All Crashes	Fatal	Percent of Fatal Crashes	Injury	Percent of Injury Crashes	PDO	Percent of PDO Crashes
Angle	295	16.15%	19	22.09%	236	17.04%	40	11.24%
Left Turn	446	24.41%	26	30.23%	375	27.08%	45	12.64%
Rear End	622	34.04%	18	20.93%	440	31.77%	164	46.07%
Head-On	47	2.57%	2	2.33%	42	3.03%	3	0.84%
Sideswipe (same)	237	12.97%	5	5.81%	167	12.06%	65	18.26%
Sideswipe (opposite)	30	1.64%	1	1.16%	22	1.59%	7	1.97%
Rear to Side	8	0.44%	0	0.00%	3	0.22%	5	1.40%
Rear to Rear	2	0.11%	0	0.00%	1	0.07%	1	0.28%
Other	128	7.01%	13	15.12%	94	6.79%	21	5.90%
Unknown	12	0.66%	2	2.33%	5	0.36%	5	1.40%
TOTAL	1,827	100.00%	86	100.00%	1,385	100.00%	356	100.00%

Note: Includes only multi-vehicle MC crashes

Acknowledgements

Special gratitude to our other providers of data and information including:

National Highway Transportation Safety Administration

Health Status and Vital Statistics Section, Arizona Department of Health Services

The Information Technology Group, Arizona Department of Transportation

Motor Vehicle Division, Arizona Department of Transportation

Multimodal Planning Division, Data Bureau, Arizona Department of Transportation

The National Safety Council