

SM 6001

Deep in my Heart, Beloved.

3

Poem by ADDISON MADEIRA.

(MEDIUM VOICE.)

Music by CHARLES L. JOHNSON.

Andante.

The piano introduction consists of two staves in 4/4 time. The right hand features a series of chords and arpeggiated figures, while the left hand provides a steady accompaniment with eighth notes. Dynamics include *f* and *mf*. A repeat sign is present at the beginning.

p There bloomed a rose with-in my gar- - den sweet per - fume breath - ing
At twi - light, when the sun is set - - ting and day is dy - ing

The piano accompaniment for the first vocal line continues with similar chordal textures and arpeggios. Dynamics include *p* and *mf*.

And midst its pet - als at day's dawn - ing, A ti - ny dew - drop, like a dia - mond laid
My heart the whole wide world for - get - ting, In tender tho't my love I long for thee

The piano accompaniment for the second vocal line continues with similar chordal textures and arpeggios. Dynamics include *mf*.

A sin - gle pearl dropped down from heav - en It fell and nestled there a - part
Like incense sweet from flow - er breath - ing Or sunbeams shining clouds a - part

The piano accompaniment for the third vocal line continues with similar chordal textures and arpeggios. Dynamics include *p* and *ff*.

International Copyright Secured.

Copyright MCMXX by Ted Browne Music Co., Chicago.



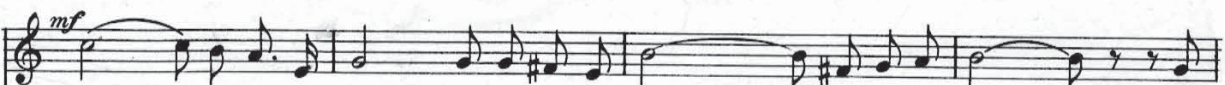
And at its touch, the beautiful flower, Un-folding took the dewdrop to her heart. — Deep
Thy face with sweetest smiles en-wreath-ing, Is pictured, O be-lov-ed, in my heart. —



CHORUS.



In — my heart be - lov - ed thine im-age dear — Shall dwell, shall dwell e-ter-nal-ly, deep



in — my heart be - lov - ed, Thy face I see — in mem-o - ry. — The



stars — in Heav'n may fade, — the sun and moon — and sky may



part ————— But in my heart be - lov - - - ed

Un - - til by death re - mov - - ed *rit.* Shin - - eth thy face be -

dim. lov - - ed *marc.* Thy face is pic - tured in my heart Deep in my

heart. *cresc.* Pic-tured in my heart Deep in my heart. *mf* *cresc.* *rit.* *ff*