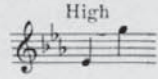


SM2636

# LIFE'S GARDEN



CARRIE JACOBS-BOND

Andante con moto

*p* *cresc.*

Red. \* Red. \* Red. \*

Red. \* Red. \* Red. \* Red. \*

*p*

Red. \* Red. \* Red. \*

Out in life's gar - den, where

sym - pa - thy grew, I found a

Red \* Red \* Red \*

heart, 'twas the heart of you.

Red \* Red \* Red \*

*cresc.*  
In that same gar - den de - vo - tion grew,

Red \* Red \* Red \*

And I found a soul, 'twas the

Red \* Red \* Red \*



soul of you. And

*Red.* \* *Red.* \* *Red.* \*

Detailed description: This system contains the first two staves of music. The top staff is a vocal line in G major (one flat) with lyrics 'soul of you. And'. The bottom two staves are piano accompaniment. The piano part features a rhythmic pattern of eighth notes in the right hand and chords in the left hand. There are three asterisks with the word 'Red.' below them, indicating redactions.

still far - ther on, where the flow'rs are few,

Detailed description: This system contains the third and fourth staves of music. The vocal line continues with the lyrics 'still far - ther on, where the flow'rs are few,'. The piano accompaniment continues with the same rhythmic pattern.

I looked for hours, through the

Detailed description: This system contains the fifth and sixth staves of music. The vocal line continues with the lyrics 'I looked for hours, through the'. The piano accompaniment continues with the same rhythmic pattern.

mist and dew, Till I found my i -

Detailed description: This system contains the seventh and eighth staves of music. The vocal line concludes with the lyrics 'mist and dew, Till I found my i -'. The piano accompaniment concludes with the same rhythmic pattern.

deal, and moth - er, my

*p rit.*

*p rit.*

moth - er, My moth - er, 'twas

*p*

*p*

you.

*p*

*rit.*

*rit.*

*rit.*