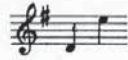


SM 2163

Dedicated to Marie White Longman

3

THE SANDMAN



Words by
MARY WHITE SLATER

Music by
CARRIE JACOBS-BOND

Allegretto

When the
And the

mp

lights are lit, And the ta - ble's set, And the maid brings in the
but - ter'd bun With the jel - ly on, Ros - y red as — jells should

buns, Tom - my Tink - er's eyes Get as big and wise, For —
be; And the last sweet sup From the sil - ver cup, Of the

Words by permission of "Cosmopolitan Magazine" Copyright 1910 by International Magazine Company

Copyright 1912 by Carrie Jacobs-Bond

International Copyright Secured

that's when the sand - man comes.
drows - y — cam - bric tea.

From his great high chair He —
Ah! my beau-teous boy, I am

tries to stare, And pre - tend he's — wide a - wake; But his
sad with joy, I am glad with a pain that fears. In your

rit.

hand falls down, And he drops his spoon, And the
moth - er's breast I would keep your nest, For the

a tempo

a tempo

Detailed description: This system contains the first two staves of music. The top staff is a vocal line in treble clef with a key signature of one sharp (F#) and a 3/4 time signature. It contains the lyrics: "hand falls down, And he drops his spoon, And the moth - er's breast I would keep your nest, For the". The bottom staff is a piano accompaniment in bass clef, featuring a simple harmonic accompaniment with some melodic lines in the right hand. The tempo marking "a tempo" appears twice, once above the vocal line and once above the piano accompaniment.

sand - man gets his cake. *D.C.*
sand - man of the years.

D.C.

Detailed description: This system contains the next two staves of music. The top staff is a vocal line in treble clef with the lyrics: "sand - man gets his cake. sand - man of the years." The bottom staff is a piano accompaniment in bass clef. The tempo marking "D.C." (Da Capo) appears twice, once above the vocal line and once above the piano accompaniment.

dim. *p*

Detailed description: This system contains the final two staves of music. The top staff is a vocal line in treble clef, which is mostly empty with a few notes at the end. The bottom staff is a piano accompaniment in bass clef, featuring a more complex melodic line in the right hand and a bass line in the left hand. The dynamics markings "dim." and "p" (piano) are present.