

May 2016 volume 19 number 4

Sun Devil Stadium
emerges as cultural hub

Researching how to
construct a “safe zone”

Celebrating ASU
sports traditions


READY TO
TAKE ON

THE

WORLD

University prepares students
for global impact





As a graduate of ASU, you could receive exclusive savings on auto and home insurance from Liberty Mutual.¹

Join thousands of satisfied customers with Liberty Mutual Insurance.²



Discounted Rates—You could save up to \$427.96 a year³ on auto insurance and receive additional discounts on home insurance.



Exceptional Service—Whether you're in an accident or just need some advice, know we'll always be on call for you.



Superior Benefits—Enjoy a number of superior benefits, such as 24-Hour Claims Assistance, Accident Forgiveness⁴, Roadside Assistance⁵ and Better Car Replacement.^{TM6}



Liberty Mutual
INSURANCE

ASU ALUMNI
ARIZONA STATE UNIVERSITY

For a free quote, call 800-867-5512
or visit libertymutual.com/asualumni
Client # 9697

This organization receives financial support for offering this auto and home benefits program.

¹ Discounts and savings are available where state laws and regulations allow, and may vary by state. To the extent permitted by law, applicants are individually underwritten; not all applicants may qualify. ² Based on Liberty Mutual Insurance Company's 2013 Customer Satisfaction Survey in which more than 85% of policyholders reported their interaction with Liberty Mutual service representatives to be "among the best experiences" and "better than average." ³ Figure reflects average national savings for customers who switched to Liberty Mutual's group auto and home program. Based on data collected between 9/1/12 and 8/31/13. Individual premiums and savings will vary. ⁴ For qualifying customers only. Accident Forgiveness is subject to terms and conditions of Liberty Mutual's underwriting guidelines. Not available in CA and may vary by state. ⁵ With the purchase of optional Towing & Labor coverage. Applies to mechanical breakdowns and disablements only. Towing related to accidents would be covered under your Collision or Other Than Collision coverage. ⁶ Optional coverage. Applies to a covered total loss. Deductible applies. Does not apply to leased vehicles and motorcycles. Not available in NC. Coverage provided and underwritten by Liberty Mutual Insurance and its affiliates, 175 Berkeley Street, Boston, MA 02116.

©2015 Liberty Mutual Insurance

The official publication of Arizona State University
May 2016, Vol. 19, No. 4

PUBLISHER

Christine K. Wilkinson '66, '76 Ph.D.

EDITOR-IN-CHIEF

Tracy Scott '88 B.A.

MANAGING EDITOR

Liz Massey

CONTRIBUTING EDITOR

Jan Stanley '86 Ph.D.

ART & DESIGN DIRECTOR

Boyd Erickson

SENIOR GRAPHIC DESIGNER

Kendra Pelofske

SALES & MARKETING COORDINATOR

Robin Hawkins
480-965-4631

**ADVERTISING SALES,
DIRECTOR OF BUSINESS DEVELOPMENT**

John Davis
480-965-5051

PRINCIPAL PHOTOGRAPHY

Tom Story Tim Trumble
Andy DeLisle

ASU Magazine is printed on paper that is certified
to the Forest Stewardship Council® (FSC®) Standards.



ASU Magazine
PO Box 873702
Tempe, AZ 85287-3702
(480) 965-2586
alumni@asu.edu
www.asumagazine.com

ASU Magazine (USPS 024-438; ISSN 1940-2929) is published quarterly by the Arizona State University Alumni Association, PO Box 873702, Tempe, AZ 85287-3702, (480) 965-2586, FAX (480) 965-0225. Subscriptions are sent to all ASU alumni. You may become a friend of the Alumni Association regardless of university affiliation. Annual dues to become an active member or friend are \$50 for individuals and \$60 for couples. Gold Devil Life member dues are \$650 for individuals and \$800 for couples. Periodicals Postage is paid at Tempe, AZ and additional mailing offices. Postmaster: Please send address changes to ASU Magazine, Attention: Circulation, PO Box 873702, Tempe, AZ 85287-3702. Permissions: Portions of this publication may be reprinted with the written permission and proper attribution by contacting the ASU Magazine editor. ASU Magazine can be accessed online at asumagazine.com.



President's Letter

Whether you received your degree a year ago, a decade ago, or more than a half-century ago, two things connect all of us who call Arizona State University our alma mater – shared memories and a stake in our university's future. The ASU Alumni Association has existed throughout these decades, and our purpose has remained the same: to unite and serve our alumni.

Because we continuously strive to serve alumni and the university better, we are evolving our membership model. On July 1, 2016, we will transition to a philanthropically based membership model. All graduates of ASU will become members of the Alumni Association. Those who want to take a more active role in demonstrating their affinity for the university can choose multiple giving levels offered by the Alumni Association. Beyond membership giving, alumni will have additional opportunities to contribute – to the Traditions Fund, alumni scholarship programs, and other gifts that support and advance the mission of your alma mater.

As part of the new model, we're also developing some unique experiences for our members who participate in the giving levels. We will be providing more details about how this membership model transition will affect you in future issues of ASU Magazine, as well as through other communication channels. Members at all levels will continue to enjoy a rich mix of benefits and exclusive discounts, and they also will receive information about the impact their gifts have upon the association and the university.

The association is executing this change to invest in the future of ASU, and in this issue, we present three features that provide a sample of where ASU is headed as an institution.

- The "Safe Zone" feature highlights research, scholarship and advocacy at ASU intended to make our community a safer place for all people.
- "Ready to Take On the World" discusses the many ways in which ASU equips its students – regardless of their home country – to be global citizens and to resolve global challenges with their peers.
- Finally, we take a look at the ongoing re-invention of Sun Devil Stadium from a sports venue to a year-round community hub.

We celebrated the future of ASU recently, as we welcomed the Class of 2016 into the Sun Devil alumni family. This summer, we'll host dozens of Sun Devil Send-Offs in cities across the United States and around the world to connect incoming students with alumni, fellow students, and other ASU families. Please visit alumni.asu.edu to learn more ways you can express your affinity for ASU, and join us in building a better Arizona State University.

Christine K. Wilkinson, '66, '76 Ph.D.
President & CEO of the ASU Alumni Association
Senior Vice President and Secretary of the University



20

Ready to take on the world

In an age where businesses are becoming increasingly global, international experience is more and more becoming a necessity – not a choice. ASU provides a myriad of experiences for students – regardless of their country of origin – that broaden perspectives and provide practical cross-cultural skills.

26



Work in progress

From the idea's debut in 2012, the reinvention of Sun Devil Stadium has been a test lab for ASU President Michael M. Crow's New American University concept as it applies to a major university landmark. Read about the second phase of this three-part reinvention of the stadium, which focuses on expanding the facility's primary purpose from a modern sports stadium into a community hub - a place that Sun Devils and friends can visit all year to experience a variety of sports, arts, cultural and community programming.

ASU Alumni Events:
alumni.asu.edu/events

Facebook
ASU: facebook.com/arizonastateuniversity
Alumni: facebook.com/asualumni
Athletics: facebook.com/arizonastatesundevils

Foursquare:
foursquare.com/asu

iTunes:
itunes.asu.edu



4

1 President's Letter

Alumni Association President Christine K. Wilkinson introduces the association's new membership model.

University News

University remembers former President J. Russell Nelson; NASA awards ASU \$10 million to create develop next-generation digital learning experiences; CBS anchor Scott Pelley to receive 2016 Cronkite Award.

14 Sports

An inside look at some of the most cherished Sun Devil sports traditions, including the Territorial Cup rivalry, the "curtain of distraction," Camp Fargo and more.

Plus: Updates from Sun Devil sports teams and clubs.



38

Arts & Culture

Two ASU alumni (aided by a number of other university contributors) have created "The Ballad of Arizona," a live performance in the style of public radio's "A Prairie Home Companion" that relates lesser-known facts about the state's fascinating history.

Plus: new books by alumni, staff and faculty in Shelf Improvement.



44

Alumni News

Alumni Association activities blend the best of innovation and tradition; ASU Travel & Tours unites Sun Devil travelers worldwide.

48 Sun Devil Network

Reports from around the Sun Devil nation.

54 Class Notes

Alumni news, notes and milestones.

64 Sun Devil Snapshot

A tribute to Charles Conley, ASU's official photographer for decades and eyewitness to some of the university's most iconic images.



32

Safe zone

ASU challenges conventional assumptions and prevailing ideas about the causes and effects of crime, victimization and patterns of violence, through new avenues of scholarly research and curricula designed to prepare students to work in an evolving criminal justice system. The university's focus centers on cultural changes that can lead to a safer society.

ASU ALUMNI ASSOCIATION BOARD AND NATIONAL COUNCIL 2015-2016

OFFICERS

CHAIR

Kathleen Duffy Ybarra '81 B.A.

CHAIR-ELECT

Brian LaCorte '85 B.S.

TREASURER

Ryan Abbott '01 B.S., '08 M.B.A.

PAST CHAIR

Bob Boschee '83 B.S., '85 M.B.A.

PRESIDENT

Christine Wilkinson '66 B.A.E., '76 Ph.D.

BOARD OF DIRECTORS

Jason Alberts '97 B.S., '03 J.D.

Steven Balthazor '91 B.S.E.

Michelle Bolton '93 B.A.

Bob Boscamp '69 B.A.E.

Teresa Clement '02 B.S.E., '07 Ph.D.

Malissia Clinton '90 B.A.

Glenn Crawford '78 B.S.

Bret Giles '87 B.S.

Trish Gulbranson '88 B.S.

Chris Hill '86 B.S.

Fred Reish '67 B.S.

Darren Skarecky '94 B.S.

Anthony Valencia '91 B.S., '13 M.B.A.

Jeff van Raaphorst, '87 B.S., '97 M.B.A.

NATIONAL ALUMNI COUNCIL

Yesenia Barraza '08 B.A., '13 M.Tax.

Jeff Daniel '06 B.S.

Eddie DeVall '93 B.S.

Margaret Dunn '10 B.A., '12 M.B.A.

Michelle Gettinger '90 B.S.

John Gibson '05 B.S., '10 M.B.A.

Michael Grosso '97 B.S.

Andy Hanshaw '87 B.S.

Luis Heredia '98 B.S.

Kristine Kassel '91 B.S.

Danelle Kelling '00 B.A., '04 J.D.

Nick Kieffer, '00 B.A.

Tere LeBarron '82 B.S., '92 M.H.S.A.

Jeff Mirasola '90 B.S.

Caleb Navarro '05 B.S., '08 M.S.

Alberto Pino '06 B.A., '06 B.S.

Guy Patrick Roll '90 B.S.

Graham Rossini '02 B.S., '11 M.B.A.

Travis Snell '00 M.P.A.

Michael Tully '87 B.S., '91 M.B.A.

Note: Members of the Board of Directors are also members of the National Alumni Council.

LinkedIn:

alumni.asu.edu/linkedin

Pinterest:

pinterest.com/arizonastate

Soundcloud:

soundcloud.com/asualumni

Twitter

ASU: twitter.com/asu

Alumni: twitter.com/asu_alumni

Athletics: twitter.com/thesundevils

Young Alumni: twitter.com/asuyoungalumni

Vimeo (Alumni):

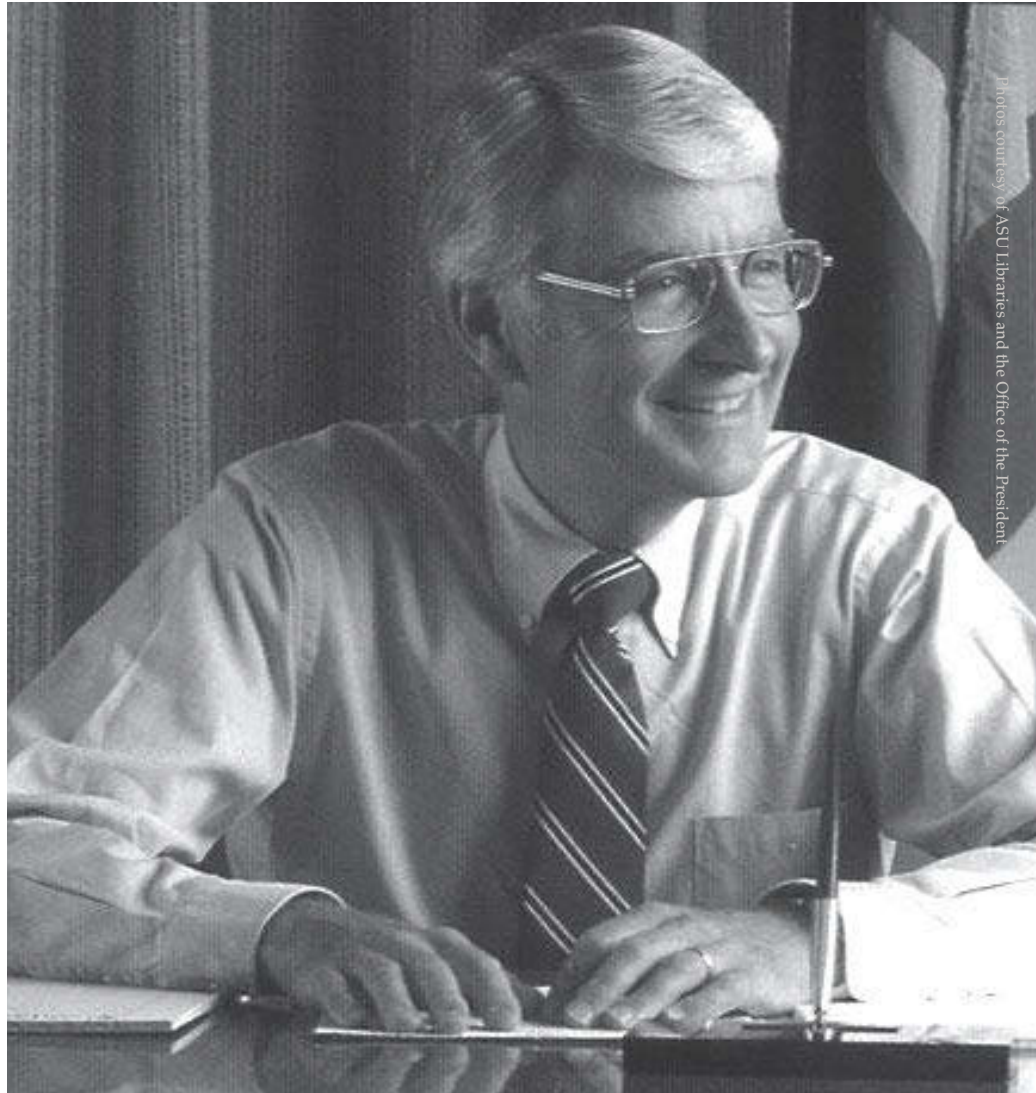
vimeo.com/asualumni

YouTube (ASU):

youtube.com/asu

In memoriam

Former ASU
President
J. Russell Nelson
dies at 86



J. Russell Nelson was ASU's 14th president, serving from 1981 to 1989.

J. Russell Nelson, the 14th president of Arizona State University, died at his home in Tempe on March 23. He was 86.

"Russell Nelson honed Arizona State's mission and energized the university to excel beyond what had previously been accomplished," said Michael M. Crow, ASU's president since 2002. "Through his expertise and passionate advocacy, Russell made significant strides forward in scholarship funding, campus facilities and student services."

Nelson led the university from 1981 to 1989. He saw ASU through major physical expansions, including the opening of the West campus, the addition of a fine arts center that bears his name, and the construction of ASU Karsten Golf Course.

In the early 1980s, Nelson played a major role in ASU's first comprehensive



Nelson at the dedication of ASU's West campus.

fundraising campaign. His focus and dedication helped the Centennial Campaign for ASU raise more than \$114 million for the growing university. As part of the fundraising campaign, Nelson created the ASU President's Club, an organization of donors whose gifts are used for university advancement at the discretion of the president. Today, the President's Club roster lists more than 500 members.

Lattie Coor, who succeeded Nelson as president of ASU, remarked, "(Nelson's) quiet demeanor, coupled with a determined and disciplined leadership style, moved the university forward in a way that has made its subsequent successes possible."

Nelson earned his bachelor's degree in business and economics from Pacific Union College and his master's in business administration and doctorate in finance from UCLA. In 1970, he became vice provost and professor in finance at the University of Colorado-Boulder. During his time at the university, he was rapidly promoted — to associate provost, vice president for budgets and planning, vice president of administration, and acting chancellor. He became the chancellor at that institution in 1978.

He is survived by three sons — Richard, Robert and Ronald Nelson — as well as a foster son, two foster daughters and four grandchildren. His wife, Bonita (Casey) Nelson, passed away in 2014.



A new grant from NASA will enable Arizona State University to create new, digital science courseware that engages students through virtual simulations and hands-on exploration of science.

Star power

ASU receives NASA grant to develop science-ed courseware

Arizona State University has received a \$10.18 million grant from NASA's Science Mission Directorate Education Community to develop next-generation digital learning experiences that incorporate NASA science content.

Principal Investigator Lindy Elkins-Tanton and Deputy Principal Investigator Ariel Anbar, both professors in the School of Earth and Space Exploration (SESE), will lead the development and evaluation teams for this grant.

During the five-year program, ASU-based teams will work with the Inspark Science Network and ASU's Center for Education Through eXploration (ETX). The Inspark Science Network is a joint initiative of ETX and adaptive learning pioneer Smart Sparrow, launched in 2015 to create new digital courseware that incorporates online simulations, virtual field trips and adaptive learning analytics to help students who are at risk of failing science courses succeed.

"SESE is known for combining the creative strengths of science, engineering and education, setting the stage for a new era of exploration," says Elkins-Tanton, who is also director of SESE. "With this grant, we can promote a greater public understanding and appreciation for science, and inspire a new generation of explorers. We hope to share the exciting world of NASA science in a way that is both approachable and interactive."

Of particular focus will be the "active and adaptive" approach to science education, where learning becomes interactive and the platform can be modified for different audiences and teaching goals.

The ASU team will develop personalized and adaptive learning experiences centered on astrobiology and "small bodies" such as Saturn's moon Enceladus, Jupiter's moon Europa, and asteroids.

In the near term, the target audience for the content will be independent self-learners of science. In the longer term, the team seeks to expand the program to formal K-12 education, in coordination with NASA's new education strategies.



Photo by: Michael Barton

A new water decision tool developed at ASU can help corporations determine where to establish green infrastructure such as a constructed wetland in order to benefit both the environment and their bottom line.

Water level

ASU sustainability decision tool creates win-win for businesses, environment

Starbucks, Procter & Gamble, Coca-Cola and other major corporations all tout their contributions to combating climate change, saving wildlife and replenishing water sources, but balancing sustainability goals with profit targets can be a difficult job. A revolutionary new tool developed at Arizona State University can help corporations apply analytics to how they use water, simultaneously helping water conservation, habitat restoration and their bottom line.

The Green Infrastructure Support Tool was developed by John Sabo, a professor in the School of Life Sciences and a faculty member of the Center for Biodiversity Outcomes. Hongkai Gao, a postdoctoral research associate, worked with Sabo and contributed the hydrological work on the tool.

“It tells Dow how to meet their water bottom line for manufacturing by creating wetlands instead of creating gray infrastructure,” Sabo said, citing a real-world example. Gray infrastructure refers to built solutions, such as dams or retention basins.

The tool puts a dollar value on wetlands restoration, com-

paring it with gray infrastructure. For instance, there are lots of places where wetlands can be restored, but only a few are viable economically and will meet the bottom line better. Finding where it would be best to invest in green infrastructure is what the tool does.

“What we’re trying to eventually do with them is to combine that green infrastructure concept with the gray that’s existing so that maybe they could store the extra water they slow down from floods,” Sabo noted.

The nonprofit Earth Genome, which connects scientists and technology providers to governments, corporations and investors, approached the Center for Biodiversity Outcomes and asked them to provide the science for the water tool. Earth Genome’s goal is to enable key institutions to account for natural capital in decision-making.

Seven global corporations expressed interest in the tool when it was unveiled at the World Business Council for Sustainable Development in Paris, including Unilever, Monsanto and Indian mega-conglomerate Tata. Sabo is pleased to see his work having an immediate, measurable impact on the environment.

“I like this because corporations can make things happen fast,” he said. “You know your science is going to lead to a solution fast.”



Liz Lerman – choreographer, author, educator and 2002 MacArthur “Genius Grant” Fellowship recipient – joined the faculty of Arizona State University at the beginning of the Spring 2016 semester.

A giant leap forward

Dance Exchange founder and MacArthur fellow Liz Lerman joins ASU

Liz Lerman — choreographer, author, educator and 2002 MacArthur “Genius Grant” Fellowship recipient — joined the faculty of Arizona State University at the beginning of the Spring 2016 semester.

Widely recognized as an important influence in the worlds of dance, arts-based community engagement and cross-disciplinary collaboration, Lerman will assume a unique position as Institute Professor to lead programs and courses that span disciplines within and beyond ASU’s Herberger Institute for Design and the Arts.

“My appointment here, as much as it’s about the art, it’s also about the university itself and its interest right now in multidisciplinary practice and its relationship to the community on the whole,” said Lerman.

As a young artist based in Washington, D.C., Lerman founded the Dance Exchange in 1976. She cultivated its multigenerational ensemble into a leading influence in contemporary dance until 2011, when she began an independent phase of her career, including a recent residency at Harvard University.

Working with collaborators from fields as diverse as genomics, religion and physics, her work has won critical and scholarly attention and has included an examination of human-rights law commissioned for the Harvard Law School; a dance about origins launched in the tunnels of the Large Hadron Collider at the European Organization for Nuclear Research, and later performed at ASU Gammage; nine short performances about the defense budget; and innovative residencies and collaborations that span nursing homes and medical schools to the National Academy of Sciences and the London Dance Umbrella.

Recently, Lerman debuted “Healing Wars,” a theatrical dance about the role of healers tasked with treating the physical and psychological trauma of war.

At ASU, Lerman will create a cooperative of artists, researchers and civic leaders in a lab-like environment to experiment with methods and techniques for broad social impact. Working across disciplinary lines and schools, her Ensemble Lab will examine the role of artists in society, expand artists’ professional opportunities, and prepare artists to be both imaginative innovators and civic partners.

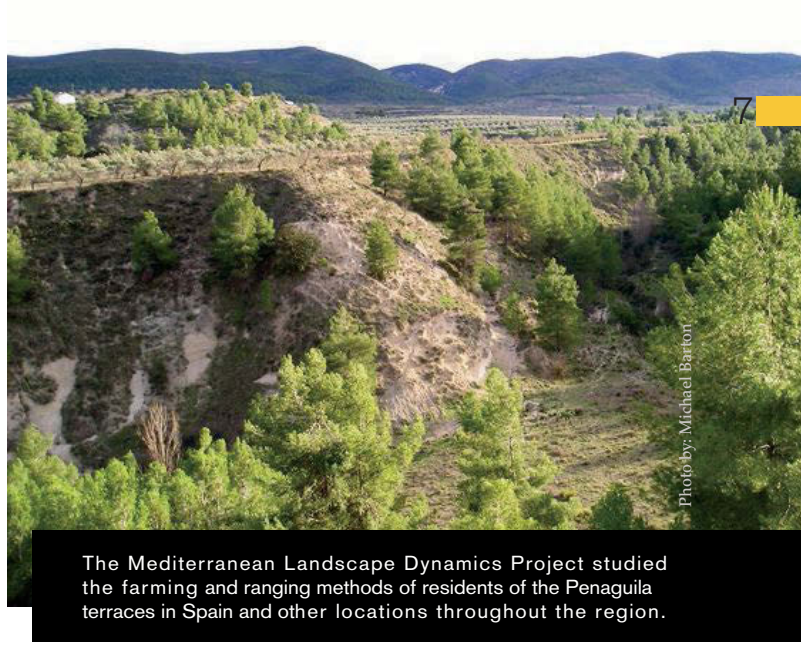


Photo by: Michael Barton

The Mediterranean Landscape Dynamics Project studied the farming and ranging methods of residents of the Penaguilla terraces in Spain and other locations throughout the region.

Cultivating success

Computer simulations help researchers study farming and ranching in the Mediterranean

Humans have been working the land for millennia, cultivating plants or herding animals.

Now researchers from Arizona State University are reporting on a 10-year project that studies the long-term effects humans have had on the land — and the consequences for the communities whose livelihoods depend on the land. Their research has led to some surprising reasons why communities survive or fail.

The Mediterranean Landscape Dynamics Project, led by Michael Barton, a professor in ASU’s School of Human Evolution and Social Change, has studied human interaction with the land in the Mediterranean region since 2004. It seeks to understand how human and natural forces, like climate, began to interact to create socio-ecological landscapes, like the terraced fields, orchards and pastures found throughout the region today.

The focus of the research was on small-scale farmers or herders, who still make up more than 70 percent of the world’s food producers, and how they transform landscapes over long periods of time.

Among the findings, Barton said, was the idea that there are thresholds that separate success from failure. Farmers and herders can find a balance in working the land that keeps it productive. But as communities grow, they may pass unforeseen thresholds where the land-use practices that once allowed them to thrive begin to destroy the productivity of the land that supports them.

Another finding may explain why most people who produce our food either put most of their effort into cultivating crops or into herding animals. Modeling experiments show that while farmers or herders can be successful, those who try to do an equal amount of both eventually fail.

Barton and his colleagues, who come from a variety of scientific disciplines and several institutions, combined computer modeling with field research — an approach called experimental socioecology. The findings were presented in a paper, “Experimental socioecology: Integrative science for Anthropocene landscape dynamics,” published in a January 2016 issue of *Anthropocene*. The Mediterranean Landscape Dynamics Project was supported by the National Science Foundation.



Scott Pelley of CBS Evening News

Broadcasting excellence

'CBS Evening News' Anchor Scott Pelley to Receive 2016 Cronkite Award

Thirty-five years ago, Walter Cronkite signed off for the final time as anchor of the "CBS Evening News." Earlier this year, Arizona State University announced that distinguished and award-winning journalist Scott Pelley, who now sits in Cronkite's former anchor chair, will be the 2016 recipient of the Walter Cronkite Award for Excellence in Journalism.

Pelley, anchor and managing editor of the "CBS Evening News" and a correspondent for "60 Minutes," will receive the 33rd Cronkite Award, given by ASU's Walter Cronkite School of Journalism and Mass Communication at a ceremony Nov. 21 at the Sheraton Grand Phoenix Hotel. He also will broadcast the "CBS Evening News" that day live from the Cronkite School on ASU's downtown Phoenix campus.

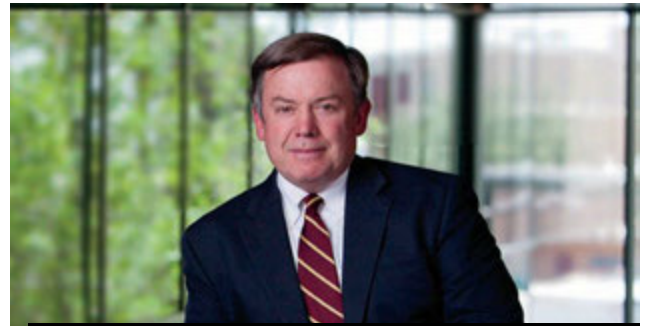
"Walter became known as 'Uncle Walter' to an admiring audience, but he was truly like an uncle to me," Pelley said. "In our conversations, he pressed me to be honest with the audience, skeptical of conventional wisdom, and grateful for my family. His advice and his example are more urgent today than at any time."

Pelley, who assumed the anchor desk in 2011, has led the "CBS Evening News" to new heights by growing its audience and winning journalism's most prestigious awards, including the George Foster Peabody Award, an Alfred I. duPont-Columbia Award, two George Polk Awards, five Emmys, five Edward R. Murrow Awards and a host of additional honors. He also serves as a full-time correspondent on "60 Minutes," where he has reported from Iraq on the front lines in the battle against ISIS; covered the Paris terrorist attacks; interviewed CIA Director John Brennan; and uncovered critical lapses in the U.S. security clearance process that millions of people must pass to work with America's secrets. Pelley joined CBS News in 1989, and became a correspondent for "60 Minutes" in 2004.

Cronkite School Dean and University Vice Provost Christopher Callahan said honoring Pelley is particularly appropriate this year. Cronkite would have been 100 years old this November.

"No one today better represents the legacy of Walter Cronkite – and his values of accuracy, objectivity and integrity – than Scott Pelley," Callahan said.

Previous Cronkite Award recipients include TV news anchors Charlie Rose, Diane Sawyer and Robin Roberts; newspaper journalists Ben Bradlee, Helen Thomas and Bob Woodward; and media executives Katharine Graham, Al Neuharth and Bill Paley. Cronkite personally presented the award during its first quarter-century before his death in 2009.



ASU has joined the University Innovation Alliance, a consortium of 11 large public research universities that aims to help more students graduate from college.

University Innovation Alliance tackles college retention, graduation rates

The University Innovation Alliance (UIA) announced in March that it was receiving \$3.85 million in new funding from the Bill & Melinda Gates Foundation, Ford Foundation, and USA Funds to support its work to improve college completion rates. Arizona State University is a founding partner in the UIA, and ASU President Michael M. Crow is chair of the alliance.

Founded in 2014, the alliance is a national consortium of 11 large public research universities working together to regain America's economic competitive edge by helping more students graduate with a high-quality and affordable education. Members of the UIA are committed to four objectives: producing more graduates, graduating more students across the socioeconomic spectrum, sharing data, and innovating together. Thanks in part to the increased focus on these issues at UIA campuses, member institutions already are experiencing improvements in student outcomes.

In 2014, the group set a public goal to graduate an additional 68,000 students over the next decade. According to an updated forecast, UIA members are now on track to graduate nearly 100,000 additional students during that time.

Since its inception, UIA members also have increased the proportion of degrees awarded to low-income students by three percentage points, while decreasing the gap in graduation rates between low-income students and their more affluent peers. ASU, along with The Ohio State University, University of Central Florida, Iowa State University, Oregon State University and Purdue University, each have increased the number of low-income graduates by more than 19 percent.

Crow explained that collaboration was the key to creating change across America's higher education environment in these categories.

"Collaboration through the Alliance represents a force multiplier in our efforts to increase completion rates," Crow asserted. "Big data enable us to understand what works and apply the experience of our peers so that we don't have to experiment alone."

With the latest investment, the UIA has been awarded \$18.45 million in total funds, including support from the the Bill & Melinda Gates Foundation, the Ford Foundation, the Kresge Foundation, the Lumina Foundation, the Markle Foundation, USA Funds, and the U.S. Department of Education.

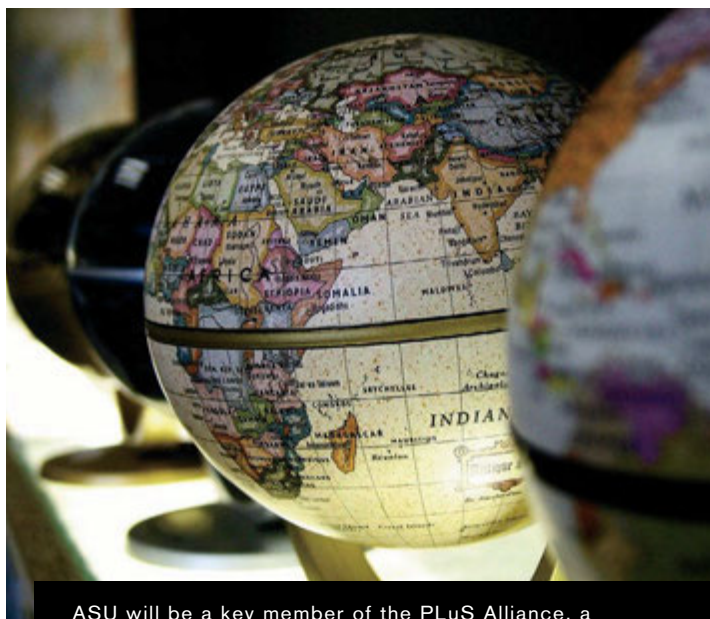
ASU leads international PLoS Alliance

Arizona State University has joined with King's College London and UNSW Australia to form the PLoS Alliance, a new partnership aimed at discovering research-led solutions to global challenges and expanding access to world-class learning.

Combining the cutting-edge research capabilities and innovative education approach of three universities in different parts of the world, the PLoS Alliance will undertake cross-border research collaborations to address significant issues related to health, social justice, sustainability and innovation. The research will be supported with a suite of related learning programs to be delivered online.

The partnership officially was launched earlier this year in London. The Alliance announced more than 60 inaugural PLoS Alliance Fellows from across the three universities, with plans to have 100 Fellows in total this year.

More than 20 academic programs with relationships to the Alliance will be available this fall. Degrees to be offered through PLoS Alliance universities will initially include bachelor's degrees in sustainability, global health, community health, whole person care, business, and global logistics management, and master's degrees in the science of healthcare delivery, infectious diseases intelligence, and sustainability leadership.



ASU will be a key member of the PLoS Alliance, a globally focused partnership.

W. P. Carey School launches Forward Focus MBA program

A business degree has long been the most direct route to corporate success, but good business skills also can provide people with the means to give back to their communities.

And now ASU's W. P. Carey School of Business wants to help people who desire to do good through its new Forward Focus MBA program.

The school will offer up to 120 full scholarships for master's of business administration degrees next year, an effort to maintain its competitive edge among top business school applicants while increasing the appeal of an MBA to people who want to give back to their communities through nonprofit work or innovative startups.

By covering tuition and fees, the Forward Focus scholarship will put an MBA in reach for potential entrepreneurs and nonprofit leaders who might otherwise have skipped the degree because of the cost.

"Being at ASU and seeing how we have been so successful with our excellence and access mission with undergraduates really inspired us to think differently about an MBA," said Amy Hillman, dean of the W.P. Carey School of Business, which already provides more than \$1 million in scholarships for undergraduate degrees.

Tuition and fees for the full-time MBA program are \$54,000 for Arizona residents, \$87,000 for non-residents and \$90,000 for international students.

The funding for the Forward Focus MBA program comes primarily from the original endowment from William Polk Carey, the real-estate investor whose foundation donated \$50 million to the business school in 2003.

Photos courtesy of Charlie Leight/ASU Now



Dean Amy Hillman congratulates the graduates as they receive their diploma cases at the W.P. Carey School of Business convocation in May 2015.

"His investment in us can allow us to invest in these students," Hillman said.

The recipients will be encouraged to pay it forward to future do-gooders.

"What we're hoping to engender in the students is that this is like an 'angel investor' who has invested in them as opposed to an enterprise, and as they go out to be successful in whatever walks of life, they will make this opportunity available to those students who come behind them."

ASU satellite selected for NASA Space Launch System's first flight

The first flight of NASA's new rocket, the Space Launch System (SLS), will carry 13 low-cost CubeSats, including one from Arizona State University, to test innovative ideas along with an uncrewed Orion spacecraft in 2018.

These small satellite secondary payloads will carry science and technology investigations to help pave the way for future human exploration in deep space, including the journey to Mars. SLS' first flight, referred to as Exploration Mission-1, provides the rare opportunity for these small experiments to reach deep-space destinations, as most launch opportunities for CubeSats are limited to low-Earth orbit.

Included in these secondary payloads is ASU's Lunar Polar Hydrogen Mapper (LunaH-Map) CubeSat, headed by planetary geologist Craig Hardgrove, a post-doctorate fellow at ASU and his co-investigator, astronomer and planetary scientist Jim Bell of the School of Earth and Space Exploration (SESE).

The spacecraft will produce the most

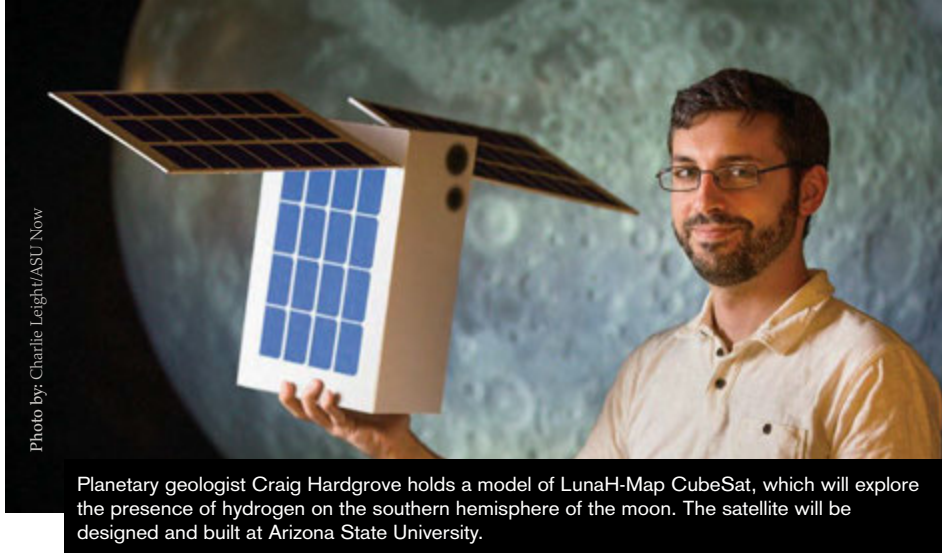


Photo by: Charlie Leight/ASU News

Planetary geologist Craig Hardgrove holds a model of LunaH-Map CubeSat, which will explore the presence of hydrogen on the southern hemisphere of the moon. The satellite will be designed and built at Arizona State University.

detailed map to date of the moon's water deposits, unveiling new details about the depth and distribution of the ice that tentatively has been identified from previous missions. Confirming and mapping those deposits in detail will help NASA understand how much water might be available and will help inform NASA's strategy for sending humans farther into the solar system.

The secondary payloads were selected through a series of announcements of flight opportunities, a NASA challenge and negotiations with NASA's international partners.

"All of our previous NASA mission involvement has consisted of us having

instruments on other people's missions. This is ASU's first interplanetary mission – this is our mission, our chance to trail blaze," said Bell, who is a professor with SESE.

CubeSats are part of a growing movement that is revolutionizing space exploration because of their small size and low cost of construction and operation, effectively opening the door to early-career scientists, providing them an opportunity to operate missions of their own.

To learn more about the ASU's participation in the CubeSat mission, watch this video: <https://vimeo.com/137074581>.

ASU releases photos of early Phoenix taken by McCulloch Brothers

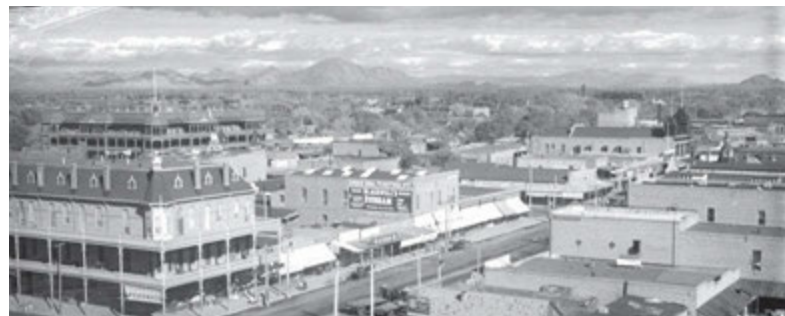
Despite the fact that some forecasts project Phoenix to become the nation's fourth largest metropolitan area by the end of this decade, the city did not experience significant population growth until the proliferation of air conditioning in the 1950s. Now, a collection of high-quality photographs showing the years preceding Phoenix's rapid expansion has been digitized and released for public use by Arizona State University Libraries.

The collection's more than 4,500 images were taken between 1884 and 1947 by Scottish immigrants James Morrison McCulloch and William Patrick McCulloch, who operated the McCulloch Brothers commercial photography studio located at the present-day intersection of East Adams Street and North Central Avenue in downtown Phoenix.

According to Digital Projects Librarian Matthew Harp, the collection offers a look into Phoenix and parts of Arizona during a "time of transition from Cowtown to emerging metropolis." Its photographs include hotels, hospitals, high schools, churches and businesses; landmarks like the Orpheum Theatre and Theodore Roosevelt Dam; landscapes of the Grand Canyon and natural bridges; and shots of the state's copper, cattle, cotton, citrus and climate industries.

Because ASU owns the copyrights for the collection, the images — which can be found within the ASU Digital Repository and through search engines — can be downloaded for free and used openly in research.

The McCulloch's business eventually was sold to Herb and Dot McLaughlin, who continued producing and selling images



A collection of more than 4,500 photos of early Phoenix taken by the McCulloch Brothers commercial photography studio — such as this 1907 image of the downtown Phoenix skyline — has been digitized and released for public use by Arizona State University Libraries.

of Arizona's and surrounding state's agriculture, government, infrastructure, parks, transportation and residents into the 1990s — including many for Arizona Highways magazine. The original McCulloch Brothers Inc. photographs were donated to Arizona State University in 1978 as part of the Herb and Dorothy McLaughlin Photograph Collection. ASU acquired the intellectual property of the collection in 2007 as a result of an agreement with the McLaughlin family.

To view the McCulloch Brothers Inc. Photographs collection online, visit <https://repository.asu.edu/collections/244>.



SUN DEVIL
CAMPUS STORES

Promo Code
ALUM15ASU
Alumni Discount
15% OFF
A Single Item!*

Exclusive ASU Gear!

TEMPE · DOWNTOWN PHOENIX · POLYTECHNIC · WEST · SUN DEVIL MARKETPLACE



Come visit any of our five Campus Stores or Shop Online!
Some exclusive items carried at the Sun Devil Marketplace
sundeilbookstores.com | sundeilmarketplace.com

*Promo Code ALUM15ASU. Offer valid in stores and online. Applies to only one gift or apparel item. Excludes gift cards, diploma frames, supplies, technology. One redemption per person. Cannot be combined with any other offers or promotions. Offer ends 12/24/16.



SUN DEVIL
CAMPUS STORES

The official stores of Arizona State University
SUNDEVILBOOKSTORES.COM

Sun Devils for life

We welcome the following individuals, who joined the ASU Alumni Association at the Gold Devil Life or Life level between Dec. 3, 2015 and March 2, 2016.

New Gold Devil Life Members

Mary Jo Abbott '88 B.S.
Carl J. Adams '70 B.S.
Jason P. Alberts '97 B.S., '03 J.D.
John W. Amling '66 B.A.E.
David R. Anderson '79 B.S.
John D. Arner '81 B.S.
Steven P. Balthazor '91 B.S.E.
Kelly D. Balthazor
Frank M. Barrios '66 B.S.E.
Marsha P. Bartel '79 B.S.
Steven L. Bartel '76 B.A.E., '80 M.Ed.
Arkeba C. Batie '12 B.S.
David R. Begg '10 B.A.
Dale J. Bennett '15 B.S.
Michael D. Boggs Jr. '15 B.S.E.
Robert L. Boscamp '69 B.A.E.
Janice L. Boscamp
Jared N. Byron '13 B.S.E.
R. W. Chastain '48 B.A.E., '52 M.A.E.
Vanessa N. Chavez '13 B.A.
Malissia L. Clinton '90 B.A.
Derek B. Cook '15 B.I.S.
Jessica L. Cunningham '15 B.A., '15 B.A.E.
Donna M. Dahl '74 M.S.W.
Miguel R. Diaz '97 B.S.
Nicholas K. Dove '12 B.A.
Allison A. Dykman '12 B.S.
Clinton B. Eckard '81 B.S., '88 M.TEC.
Nancy D. Erhorn '62 B.A.E.
Lynn D. Galyen '90 B.S.
Michael R. Galyen '91 B.S.
John D. Gibson '05 B.S., '10 M.B.A.
Charles Bret Giles '87 B.S.
Carl W. Givens '62 B.A.E.
William F. Graham '04 B.A.E.
John W. Greco '82 M.S.
Ruben L. Guebara '12 B.S.
Rommel Z. Guerrero '15 B.A.
Theresa R. Gulbranson '88 B.S.
Sarah M. Hancotte '14 B.A.
Todd L. Hardin '92 B.S., '94 M.S.
Laurel B. Hardin '70 B.A., '88 M.Ed.
Douglas J. Harter '73 B.S.

Laurel E. Hawkins '07 B.A.
David J. Hawks '11 B.S.
Valentin D. Hernandez II '99 B.S.D., '04 M.B.A.
Christopher Hill '86 B.S.
Michael E. Hoffarth '88 B.S.
Matthew I. Hornbostel '06 B.A.
Arnold Y. Imae '72 B.S.
Melisa M. Jurado-de la Rosa '14 B.S.A.
Patrick R. Kenney '11 B.I.S.
Doris D. Lagos '12 M.A.
Alice G. Lee '08 J.D., '08 M.B.A.
Jose M. Lopez '93 B.S.
Christopher G. Macaluso '07 Ed.D.
Kevin C. Melroy '15 B.S.E
DiAngelea L. Millar '14 B.A., '14 M.M.C.
Kirk R. Miller '96 M.A.
Jennifer M. Mims '01 B.A.
Lorena Naseyowma '76 B.S.
David E. Offutt '08 B.S.E.
Randall G. Pemberton '92 M.S.E.
Joseph H. Persichina '08 B.I.S.
Donald Reese '15 B.S.
C. Frederick Reish Jr. '67 B.S.
Michelle C. Reish
Maria A. Riggio '10 B.S.A., '14 M.S.
Pamela J. Rineholt '73 B.A.E., '77 M.A.E.
Alba Marina Rodriguez
Graham C. Rossini '02 B.S., '11 M.B.A.
Mark C. Sanders '12 D. Aud.
Mark D. Skroch '15 B.S.
Theodore J. Sokol '92 B.A.
Dawn D. Sokol '92 B.A.
Benjamin A. St John '15 B.S.
Darci K. Steinmetz '12 M.B.A.
Joseph Stevens
Janie C. Strasser '87 B.S., '89 M.B.A.
Michael D. Strasser '89 B.S.
Stephen M. Teglas '89 B.S.
Monica B. Telles '09 B.S.E.
Stephen T. Tomaiko '84 B.S.
Michael J. Toon '03 B.S.
Edward L. Trujillo '67 B.S.
Srinivas Vadrevu '08 Ph.D.
Manjula M. Vaz '89 B.A., '99 J.D.
Kalie M. Virden '12 B.S., '14 M.Ed.

Cyndie J. Weyerman '76 B.A.E.
John O. Whiteman '63 B.S.
Robert G. Wight '69 B.S.
Alan K. Wuckert '76 B.S.
Zhen Zhao '12 M.S.E.

New Life Members

Flor P. Aguilar Kim '95 B.S.E., '98 M.S.E.
Ronald J. Altavesta '02 B.I.S.
Januario A. Altiveros, Jr. '14 B.S., '14 B.S.
Todd A. Alvarez '89 B.S.
Adelina Y. Armenta '14 B.A.E.
Joseph Armitage '13 B.S.N.
Robin S. Arredondo-Savage '01 B.S.
Audrianna G. Bennett
Brian J. Betke '15 M.B.A.
Sai Vishnu K. Bhyravajosyula '13 M.S.
John L. Bishop Jr. '08 B.A.
Rafael Blanco '93 B.S.
John B. Bonifas '15 B.S., '15 B.S.
Jolynn M. Boyer '14 B.S.
Jennifer L. Brandon '15 B.S., '15 B.A.
Ravinette M. Brendel '03 B.S.
Nora F. Brown '05 B.S.
Glenn W. Bush '77 B.S.E.
Brett D. Calapp '98 B.A.
Adrienne E. Calapp '98 B.A.
Casey J. Caldwell '99 B.A., '06 M.B.A.
Robert E. Carlson Jr. '94 B.S.
Michelle L. Carlson '95 B.A.
Scott A. Carpenter '05 B.A.E.
Katrina Cecil '13 B.A.
Xingli Chen '15 B.S.
Keven A. Cline '15 M.B.A.
Patricia A. Cooley
Rebecca L. Cooper '15 B.S.
Jacob J. Crawford '13 B.S.
Kristin E. Currey '88 B.S.
Ahmad Dashtestani '99 M.S., '13 Ph.D.
Fred L. Deleeuw '72 B.S., '74 M.B.A.
Shannon M. DeWeese '03 B.A.E.
Edgar F. DiRaimo
Kyle R. Doran '08 B.I.S.
Anne D. Dorre '96 B.A., '98 M.C., '02 Ph.D.
Sean E. Dunn '13 B.S.

Show your Sun Devil pride for life. Become a life member at alumni.asu.edu or by calling 1-800-ALUMNUS.

- Julius C. T. Eddards '13 B.S.E.
 Nathan W. Estes '13 B.S.E., '14 M.S.
 Alden Victor Fernandes '14 M.C.S.
 Tana Fitzpatrick '08 J.D.
 Lee L. Fobar '98 B.A.E.S.E.
 Ashley T. Gauthier '12 B.A.
 Austin Godber '00 B.S.
 Ellen J. Gore '90 B.A.
 K. C. Green '86 B.S.E.
 Desirae J. Groth '14 B.A., '14 B.S.
 Dana E. Gundrum '14 B.A.
 Norman A. Hannotte '14 M.B.A.
 Sydney A. Harrison '13 B.S.W.
 Charitie L. Hartsig '04 B.A., '07 J.D.
 Vincent J. Hendren '14 B.S.
 Geraldine A. Hills '12 M.Np.S.
 Kyle S. Hirsch '05 J.D.
 Mary K. Hobby '14 B.S.A.
 Alan R. Hock '96 J.D.
 John W. Hoffman '09 B.S.
 Patricia A. Howe '86 B.S.
 Daria S. James '14 B.S.
 Alina A. Jolley '13 B.S.
 Darrell K. Jordan '14 B.S.E.
 Alyse M. Kaufman '11 B.A.E.
 Shaun Keiser '15 B.A.
 Teri L. Kennedy '80 M.S.W.
 Charles E. Kennedy
 Dohyung Kim '95 B.S.E.
 Judith A. Klapprott '66 B.A.E.
 Joanne D. Kline '84 B.S.
 Derek Knittle '13 B.S., '13 B.S.
 Theresa M. Kuebler '89 B.S.
 Christina L. Langosh '14 B.A.
 Richard J. Leaf '08 B.F.A.
 Melissa S. Lee '13 B.S.
 Cheryl L. Lemox '90 B.S.
 Marianne K. Lerdall '74 B.S.
 Michael V. Lerdall '77 B.S.
 Christopher G. Linich '14 B.S.E.
 Jessica Lopez Bravo '13 B.S.
 Lindsay A. Lorimor '14 B.A.
 Jason A. Marston '14 B.A.
 Cristina L. Marvelli '68 B.A.E.
 Julie A. Matsen '14 B.A.
 Denise E. McClain '95 B.S., '98 J.D.
 Matthew G. McCoy '00 Ph.D.
- Cara McDaniel '04 M.S., '08 Ph.D.
 Patricia R. Meyers '67 B.A.E., '72 M.A.,
 '92 Ph.D.
 Kelsey L. Millar '15 B.S.
 Vladimir A. Mirochnitchenko '14 B.S.E.,
 '15 M.S.
 Scott D. Moellenberndt '83 B.A.E.S.E.,
 '88 M.Ed.
 Matthew B. Nelson '05 B.S.W., '07 M.S.W.
 Jesse D. Nelson '14 M.B.A.
 Katherine S. O'Shea '14 B.A.
 Debra J. Palomo-Reynolds '14 B.S.
 Jessica J. Perez '12 B.L.S.
 Grant L. Perry '70 B.S.
 Melissa A. Petersen '13 B.S.
 Gail Petersen Hock '89 B.S.N., '96 M.S.
 Jennifer L. Plamondon
 Nathan D. Plamondon
 Marlon A. Pollard '14 M.L.St.
 Gordon P. Pratt '71 B.S.E., '77 M.S.E.
 Shyam S. Rangaswamy '98 M.S.
 Erin M. Regan '86 B.A.E., '11 M.Ed.
 Richard O. Rivera '01 B.S., '08 M.A.
 Jennifer Rondinelli '14 B.L.S.
 Matthew R. Ronquillo '14 B.I.S.
 Jeffrey A. Rose '92 B.S.
 Andrew J. Rosenthal '14 B.S.
 Jeffrey H. Roxstrom '86 B.S.
 Glenda E. Ruff '13 B.A.
 Austin D. Schock '14 B.A.
 Karen A. Schweller '98 B.F.A.
 Jessica J. Scott '14 B.S.D.
 Douglas G. Sells '89 B.A.
 Joseph M. Sharp '12 B.S., '12 B.S.,
 '14 M.Acc.
 Scott S. Sheppard '88 M.S.
 Robert S. Sherwood '93 B.A., '09 M.L.S.
 Joan M. Sherwood '90 B.A., '09 M.L.S.
 Amy L. Siegfried '03 B.A.
 Raegen H. Siegfried '09 M.B.A.
 Sarah Simper '13 B.S.
 Kimberly M. Skinner '13 B.A.E.
 Casey L. Slusser '14 B.S.
 Allen M. Snyder '06 B.S.E., '10 B.S.
 Emily B. Stanley '75 B.Mus.
 Stephen S. Stanley '76 B.Mus.
 Sarah E. Stevens '13 B.S.
- Karyn L. Swelgin '76 B.S.
 Dayna M. Sykes '13 B.S.
 Craig A. Talmage '14 Ph.D.
 Jesus R. Tavarez '12 B.A.
 Mary E. Tesche '11 B.A.
 Veronique R. Tonna '14 B.A.
 Barry S. Upshaw '10 M.Ed.
 Francisco D. Uribe '15 M.L.St.
 Anthony J. Valencia Sr. '91 B.S., '13 M.B.A.
 Jeffrey C. Vinton
 Bryce T. Wilde '13 B.A.
 Mirelle N. Wright '15 B.S.

Show your Sun Devil pride for life. Become a life member at alumni.asu.edu, or by calling 1-800-ALUMNUS.

Ready to play

Anderson brings iconic play to campus to inspire senior student-athletes



Athletic Director Ray Anderson brought the off-Broadway play "Black Angels Over Tuskegee" to ASU's Galvin Playhouse as part of the Senior Championship Life Experience Program.

Ray Anderson, ASU's vice president for athletics and athletic director, inaugurated an annual tradition earlier this year by overseeing the creation of the the Senior Championship Life Experience Program. Anderson wanted departing senior student athletes to remember their last year with a special experience rather than just be handed a bunch of gear, he said.

When he was an executive in the NFL office in New York, Anderson and his wife, Buffie, attended an off-Broadway play called "Black Angels over Tuskegee," the story of an African-American squadron of pilots and their heroic journey through World War II.

After arriving at ASU in January of 2014, the Andersons talked about it and thought it would be a good thing to try to bring the play to Tempe for the graduating senior athletes. Plans were set in motion, and the play was presented to the graduating senior class of athletes and ASU-affiliated military personnel on back-to-back nights this January at ASU's Galvin Playhouse. Judging from the crowd's reaction at the end of the show, it was a big success.

"We wanted to give the seniors a unique cultural event," Anderson said. "We had a steering committee that included athletes and we asked them, "What kinds of things inspire you?"

So what will they do for an encore?

"We will really have to think creatively," Anderson said. "We want things like this to be a part of the voyage at ASU."

The best offense

Lindsey ponders ASU's quarterback question

Chip Lindsey was a freshman wide receiver at North Alabama in the early 1990s. He moved on from that institution because he made a forecast that ultimately proved to be untrue.

"Then they went to a triple option (run-oriented) and so I transferred (to Alabama for academics). There wasn't going to be much for me to do," Lindsey said. "Then they won three straight Division II national championships. What did I know?"

Flash forward to the present and Lindsey is the new offensive coordinator and quarterbacks coach at Arizona State. His forecasting skills clearly have improved. Lindsey was hired away from Southern Mississippi in mid-December to replace Mike Norvell, who was named head coach at Memphis. Lindsey was the offensive coordinator for ASU's appearance in the Cactus Bowl (Phoenix) on Jan. 2 and recently finished working with the Sun Devils in spring ball.

He flirted with the idea of returning to Southern Mississippi when its head-coaching job became available in late January, but decided to remain at ASU. Since joining the Sun Devils, he has been keeping a close eye on his three quarterbacks – Bryce Perkins, Brady White and Manny Wilkins. One of them will replace former starter Mike Bercovici.

"Those guys can really play," Lindsey said. "I got to know them a little in the bowl practices and again in the spring. It's probably going to carry over (to preseason practice) before we decide (who will start)."

ASU opens the season at home against Northern Arizona on Sept. 3. The Sun Devils also have home games against Texas Tech, California, UCLA, Washington State and Utah, and the annual Territorial Cup game against the University of Arizona Wildcats will be Nov. 25 in Tucson.



Chip Lindsey

Variety is the spice of sports

ASU adds women's triathlon, lacrosse to roster

Women's triathlon and lacrosse are joining ice hockey as official NCAA Division I sports at Arizona State. They recently were named as the 24th and 25th Division I sports for the Sun Devils. Triathlon will begin in the fall of 2016, and lacrosse will play "fall ball" in 2017 to prepare for the first official season in the spring of 2018.

According to Rocky Harris, ASU senior associate athletic director and chief of staff, the Valley of the Sun is a hotbed for triathlons and marathons, "so this addition was a no-brainer, (it) kept making more and more sense."

Harris added that ASU is one of 10 NCAA schools to receive a multi-year emerging sport grant for women's triathlon by the USA Triathlon Foundation. There will be a handful of events in the fall, plus a national championship. Most of the home events will be at Tempe Town Lake and the surrounding area.

"We think it will be good from the start and continue to grow," Harris said. "We already have had hundreds of athletes from around the country and the world reach out to us."



Photo by: Debbie Brasch

ASU's lacrosse club will have an opportunity to try out for the university's new Division I team before its first official season in 2018.

ASU Senior Associate Athletic Director Scottie Graham will oversee lacrosse. He said the sport "gives athletes a different option if they don't want to play, say, soccer or softball."

The team will consist of about 40-45 players, Graham said, and will play its games at ASU's soccer stadium. New lacrosse coach Courtney Martinez Connor has been engaging with ASU's long-standing lacrosse club team, and assistant coach Meghan Keelan recently watched lacrosse club during their competitive season. Graham said the club players will be given an opportunity to try out when the Division I team gets closer to playing.



ASU's Quidditch Club has 40 to 50 members.

Making magic

Quidditch club brings fictional sport to life

There are quite a few ASU students who have the itch for Quidditch. The game first appeared in the Harry Potter films about 15 years ago, took root for real in 2005 at Middlebury College in Vermont and sprouted as a club sport at ASU in 2009.

Quidditch is a combination of dodgeball, rugby and tag and is co-ed. The ASU team has 40 to 50 members and plays several teams in the region, including the University of Arizona and Northern Arizona University. The season runs fall through spring. ASU played in a Western Regional Tournament in February with hopes of qualifying for nationals this month.

According to club co-president Allaina Honda, the game's main objective is to score on the three hoops of the opponent. The game begins with six players, including three chasers, one keeper and two beaters. The game can get quite physical, but that's part of what makes it fun. Players are astride PVC pipes for practice and brooms for competition. Quaffles, which are slightly deflated volleyballs, are for scoring. Bludgers (dodgeballs) are used to hit opponents.

"Quidditch is a fun experience because your team becomes your family," said Honda, a senior in mechanical engineering who will graduate this month. "Many members of our team are roommates and participate in team events outside of practices and tournaments. It's also fun because the Quidditch community is so large, with around 200 teams across the country."

Sports updates are written by Don Ketchum, a Tempe-based freelance sportswriter.



Quidditch is a combination of dodgeball, rugby and tag.



#1 in the U.S. for innovation

#1 ASU #2 Stanford #3 MIT
– U.S. News & World Report

The workforce of Arizona's future is here. Arizona State University graduates more than 20,000 thinkers, dreamers and master learners every year. ASU is building the next generation of leaders.

Among the best-qualified graduates, according to employers
–The Wall Street Journal



Learn to **thrive**
asu.edu

@ASU f @Arizona State University #1innovation

Sun Devil traditions

ASU sports rituals give athletics an outstanding legacy

By Joe Healey

Perhaps no type of sports competition manifests as much passion as college athletics. From the pageantry and pomp on game day to all the little sports-related rituals and rites of passage for students, athletes and fans, collegiate traditions give the sports their emotional flair and create passionate, connected fans.

A number of time-tested, long honored traditions exist among Sun Devil athletics. And that's a good thing.

"It's important for us to celebrate our history," says ASU archivist Rob Spindler. "Symbols and traditions are an important part of any university's culture, and they do change over time as our society changes in the way we celebrate and remember events."

Sun Devil traditions start with the symbolic foundation of all things Arizona State – the maroon and gold school colors. The first reports of those colors being worn in a football game are contained in a story from the Tempe News on Oct. 21, 1899, that identified the hues showcased on the gridiron that day.

Sparky, the devilish grinning face and the personification of Arizona State athletics, became the school mascot in 1946 and began making personal appearances at games in 1951. Amateur gymnast Dick Jacobs, an ASU student who performed stunts at football games in a full Sparky costume, presumably began the tradition of pushups after Sun Devil scores. Jacobs' Sparky also was the first to brandish a pitchfork.

In the 1960s, legendary head coach Frank Kush – now the namesake for the field on which the Sun Devils play – started to take his troops up north to Payson and the Camp Tontozona site for preseason practice, a tradition that except for a brief recent hiatus has since continued each August. ASU also recently reinstated the use of the Victory Bell, rung after athletic victories and first done on campus in the 1950s.



The Territorial Cup, which symbolizes ASU's rivalry with the U of A, has a tradition stretching back to 1899.



The ASU football team enters Sun Devil Stadium at every home game by running through the Tillman Tunnel.

Current head coach Todd Graham has added to the traditions of Sun Devil football, creating symbolic rocks to represent each opponent and other yearly milestones, which are ultimately smashed in celebration by a chosen player wielding a sledge hammer.

"The ASU Athletic Department has done a fantastic job in creating new traditions in a short period of time, in large part thanks to Graham," says ASU alumnus Rob Malara, co-founder of the fan website ASUDevilsDen.com. "Tradition is what makes college sports so desirable, in my opinion as a fan, and it's important to create strong traditions that students, alumni and fans can embrace and pass down."

A quick guide to ASU sports traditions

Undoubtedly the most passion driven tradition in all ASU athletics is the heated rivalry with the University of Arizona, which in football dates back to 1899. To the winner of this southwest showdown goes the spoil, specifically the Territorial Cup – an artifact considered priceless to all Sun Devils. The annual Territorial Cup football game is supplemented by a 20-sport showdown between the two institutions that has been in play since 2009. Earlier in May, ASU captured the Territorial Cup Series trophy for the third straight year.

No individual is traditionally significant to Arizona State as much as Pat Tillman, ASU's gridiron star-turned-Army Ranger whose spirit and legacy continue to inspire Sun Devil athletics. Each game day the Arizona State football squad – with Tillman's number 42 stitched in the collar of every jersey – enters Sun Devil Stadium through the Tillman Tunnel, with murals of the College Football Hall of Fame member to drive the student-athletes as they take the field.

Tillman also is the foundational force for a date circled on every Sun Devils' calendar as each spring since 2005 the Sun Devil Stadium area hosts more than 30,000 annual participants in the 4.2-mile Pat's Run to benefit the Pat Tillman Foundation and its Tillman Scholars program.

In recent years, the Sun Devil student body has championed multiple traditions that have caught on quickly such as student sections, Camp Fargo and the widely renowned Curtain of Distraction, all orchestrated by the "942 Crew" group of undergrads.

Named for the number of lower-level seats in the student section at Wells Fargo Arena, the 942 Crew assembles dedicated and rowdy students at the hoops home of Arizona State, while the lucky few in the front rows control the Curtain of Distraction – a writhing mass of ASU students in motion that's statistically proven to impair opposing foul shooters.

More than just a men's basketball community, the 942 Crew and fellow students sleep in tents outside the stadium area for days prior to football games to create "Camp Fargo," as they anxiously prepare to lay their hands



The Sun Devil Marching Band plays spirited tunes that appeal to fans of all ages at sporting events.

on the first-come, first-served football tickets. The first Camp Fargo was set up in 2013 and has grown massively in popularity and size as the Arizona game in 2015 saw 2,395 students spread across 479 campsites.

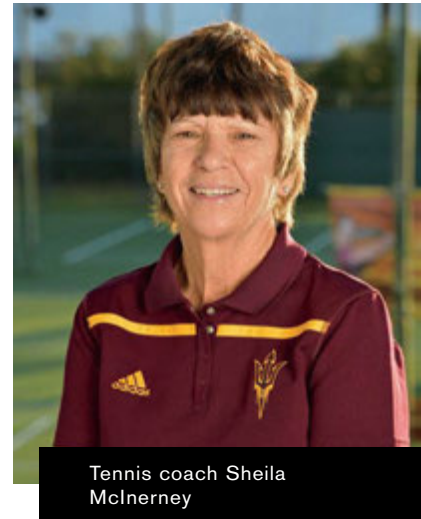
Within the confines of Sun Devil Stadium, students collectively create the "Double Inferno," an innovative format that debuted in 2015 – seating masses of students at both the north and south end zones.

A fixture of Sun Devil athletics for over a century, the booms and brass of ASU's athletic bands also must adapt to the entertainment needs of younger audiences while simultaneously honoring the time-tested traditions revered by the longtime fans.

"One of the biggest challenges is to include tunes in our performances that cater to the wide range of ages in the stands," said James Hudson, who for the past decade has served as director of athletic bands at ASU. "We'll play songs from the 1940s all the way up to current hits and I feel we integrate it all together well and keep fans engaged."

Before the team heads into Sun Devil Stadium on game day, the Sun Devil Marching Band provides the soundtrack to the "Devil Walk," in which the football team makes its way into Wells Fargo Arena for some face-time with fans before heading to the locker room to suit up for action.

Sun Devil traditions can be found elsewhere within the athletic department. Each school year begins with



Tennis coach Sheila McInerney

decorative Kachina Dolls awarded at an all-department assembly to coaches who have beaten the University of Arizona the previous year to provide an additional point of pride atop the rivalry victory.

"The Kachina Dolls are beautiful pieces of artwork and a good conversation piece when people come into your house or office," said Sheila McInerney, ASU's women's tennis coach since 1985 and the owner of more Kachina Dolls than any colleague. "We coaches take a great deal of pride in beating Arizona and the Kachina Dolls are a great way to symbolize that achievement."

Joe Healey '06 B.I.S. is a freelance sports-writer based in Tempe.





READY TO TAKE ON THE WORLD

**STUDENTS, FACULTY AND ALUMNI
HARNESS SUN DEVIL RESOURCES TO
BETTER THE GLOBAL COMMUNITY**

By Holly Beretto | Photography by Dave Tevis

"Studying abroad was, by far, the best decision I ever made," says Brittany Ferguson '15 B.S., a graduate of ASU's School of Criminal Justice and Criminology who now works in the university's Dean of Students' office. "It gave me independence, and I learned so much about myself and the world."

Testimonials like that underscore the value of myriad Sun Devil international programs for students. In an age where businesses are becoming increasingly global, and industries are demanding diverse and culturally savvy employees, international experience is becoming a necessity – not a choice.

"In a nutshell: we live in a global society," says Adam Henry, director of the ASU Study Abroad Office, which offers hundreds of global options for Sun Devils. "Employers tell us all the time, they need



Left: ASU students take a break in Myanmar during their Semester at Sea program.

Right: Alumna Brittany Ferguson studied the Italian justice system during her Study Abroad semester.



people who've been exposed to people from different cultures, who can effectively communicate across cultures and demonstrate they understand global cultures."

To that end, Henry's office has seen an uptick in interest in the two- to eight-week summer programs held around the world in nearly 45 different countries. More ASU students hold down full- or part-time jobs, now making traditional semester-long study abroad more of a challenge. Thus, the shorter faculty-directed, curriculum-laden treks are a perfect fit. In addition to daily studies, these programs allow for cultural excursions and visits to international companies, exposing participants to what daily life is like in a global context.

Henry notes the university does as much as it can to encourage students to pursue international studies; a student's financial aid package will transfer for any study abroad program held in the semester. Even Sun Devils who are completing their degree through ASU Online are eligible to participate.

"I know when I came back from my own study abroad experience, I came back with a new passion about the world. Here at ASU, we want students to understand, if they want an international experience for academic credit, we will help them make it possible," he said.

Ferguson experienced this willingness to help first hand.



"I never thought I could go abroad, financially," says Ferguson, who grew up in New Jersey and came to Arizona for high school. "I'd never even been out of the country." But the Study Abroad Office worked with the Obama Scholar to help her spend a semester in Italy, where she got an up-close look at the Italian justice system; one of her courses was taught by a lawyer who'd worked on Mafia trials. She also learned about Italian food and culture.

INTRODUCING INTERNATIONAL STUDENTS TO ASU AND THE UNITED STATES

But it's not only students from the United States that head overseas. ASU's commitment to being a leader in global education works the other way, too. Holly (Moninder) Singh heads the International Students and Scholars Center (ISSC) located on the Tempe campus, which helps international students navigate all manner of immigration, U.S. culture and campus life concerns. His office assists with filling out documents for getting student visas, oversees school

compliance with federal regulations and offers programming to be sure international students feel part of the Sun Devil experience.

"I know my own life was transformed when I came to the U.S.," says Singh, who grew up in India. He received both his bachelor's and master's degrees at Valparaiso University and then did international recruiting for the school before coming to ASU last year. "I got to experience two cultures

BECOMING A GLOBAL CITIZEN

The ability to work with people from different backgrounds and cultures is one of the hallmarks to success in a global marketplace. ASU Global Launch, a platform providing academic preparation services, undergirds those aptitudes with training in multilingual communication and professional skills development.

"Everyone needs language training to be a true global citizen," says Julia Rosen, ASU Global Launch's managing director. "But it's not just learning the words. It's having a cultural context to the language, learning what people have in common. We help show program participants how to understand the complexities of different cultures."

Global Launch was formed last year, and Rosen says the organization relies on a number of in-person and online arenas to work with both international

"I KNOW MY OWN LIFE WAS TRANSFORMED WHEN I CAME TO THE U.S."

in real time – my own Indian culture and my new U.S. one."

He says international students have unique needs when they come abroad to the United States. Classroom culture is often different, for example. Some cultures expect students to learn by rote and drill on subjects until they get the answers right, a tradition at odds with American expectations that students participate in classroom discussions and demonstrate critical thinking skills.

The ISSC offers guidance on how to handle the clash of cultures, recognizing that both international and U.S. students benefit from having students from across the globe on campus.

"Students get to see that there isn't just one way to do something," he says. "We have a great mixture of international students here, nearly 10,000 of them from more than 140 countries at both the undergraduate and graduate levels. Our international students teach us that there's value in different cultures, and domestic students learn about the world in a very real way: from interacting with someone different from them."

Top Left: ASU students participate in a Study Abroad program in Costa Rica.
Middle: Holly (Moninder) Singh heads the International Students and Scholars Center at ASU.

Right: Julia Rosen is managing director of ASU Global Launch.



students who want to experience ASU, as well as Sun Devils heading overseas.

“Global Launch has really evolved in a very short time,” says Rosen. “Digital products are important to that growth. It’s not practical for everyone to get on a plane and come to Arizona. But because of our online learning, students in China or India can take classes and experience what it’s like to encounter a U.S. classroom. Likewise, we have international educators who have developed online courses on the Coursera platform, including courses such as Chinese for Spanish speakers.”

Global Launch counts more than 110 international educa-

“IF YOU GET AN APPRECIATION FOR DIFFERENT FACETS OF THE WORLD AND THE PROBLEMS IN IT, YOU GET A FULLER FEEL FOR SOLUTIONS.”

tors on staff. All of them can teach English, and several teach Spanish, Arabic, Chinese, and French, and she estimates that more than 4,000 students already have benefitted from the programming this year.

“Our organization is young and emerging, but we’ve always looking at new ways to add value to the university, which has made international learning a priority” she says.

STUDYING THE WORLD AND ITS CHALLENGES

In addition to training students in the nuances of global business and organizational culture, ASU also focuses its research lenses on problems that have worldwide, systemic roots.

“Understanding big, global processes is a big challenge,” says Cameron Thies, professor and director at ASU’s School of Politics and Global Studies, which offers undergraduate and graduate degrees in global studies, global management and political science. The school places an emphasis on challenges that cross international boundaries, which require input from people of all backgrounds to create effective solutions.

“We’re not just talking about political science study,” he explains. “But looking at the social and economic aspects of things. Global problems need a multidisciplinary approach.”

He says that often problems are reduced to simple sound bites or sentences – “If this president would stand up to this dictator, all the problems would be solved.” – which misses the broader global issues of culture, language, history and how complex the world is.

One of the advantages that ASU has in this area is that the student body has significant levels of diversity, Thies said.

“The student body in our school is actually a microcosm of the university as a whole,” he asserted. “We’re about 40 percent minority and 40 percent female. We’ve got about 1,300 political science majors and maybe 300 global studies majors; 300 students are exclusively online. About a third are involved in the Honors College. These are students who are committed to finding solutions to world issues.”

In addition, the school requires its global studies majors to have an international experience while they are working on their degrees. Thies says it can be study abroad or an international internship: “If you get an appreciation for different facets of the world and the problems in it, you get a fuller feel for solutions.”

Megan Jehn agrees. She’s an associate professor and the graduate program director for the School of Human Evolution and Social Change, which administers undergraduate and graduate degrees in global health.

“Over the last few years, there has been a dramatic increase in the number of academic global health programs,” she says. “At ASU, we’ve really led the way on that. Our program helps students understand the complex relationship between the many factors that influence the health of individuals and communities. If you want to understand contemporary global health problems, you have to know how social, cultural, economic and behavioral factors shape health.”

Jehn says the program attracts passionate students who want to make a difference.

“To me, it’s an incredibly diverse and fascinating group; we have about 10 students at the master’s and Ph.D. level. These are students with excellent research skills who are interested in working in transdisciplinary academic settings or non-academic health settings, such as governmental agencies, NGOs and the private sector.”

Jehn’s own background is as an epidemiologist, which she says has allowed her to appreciate the complexity of health problems – something she says these Sun Devils are seeing as they progress in their coursework.

CONNECTING SUN DEVILS OVERSEAS

International connection groups link alumni, students far from ASU

It’s normal to expect to see fellow ASU alumni in Tempe, or indeed anywhere in the Valley of the Sun. But the native Sun Devil habitat extends far beyond Arizona’s borders, or even the boundaries of the United States.

“We have a large international network of nearly 35,000 international alumni, and with 10,000 current international students, that number will definitely grow,” said Alissa Pierson, vice president of programs and constituent relations for the ASU Alumni Association. “We have 63 international connection groups, which function similar to alumni chapters here in the states.”

Those alumni connections are in places as far flung as China and India and Italy, as well as closer to home in South America and Canada. ASU’s Alumni Association plays a vital role in promoting Sun Devil pride and helping former students feel connected to the school. International alumni serve as global ambassadors in recruiting students to the university, host send-off parties for incoming Sun Devils and provide a network for each other across the globe. They might also host

“You have to understand the connections between health and our social, economic and political systems,” she says. “And be able to work in trans-disciplinary teams. This program gives students that foundation, which makes them able to apply their knowledge and research skills to improve the health of disadvantaged populations worldwide.”

Helping Sun Devils build an international foundation gives them not only a competitive edge in the global workplace, but serves in their own personal development. Ferguson’s experiences prove that. This young alumna, who had never been out of the country before her study abroad experience, is now heading to China in June for a two-year, English-teaching stint.

“ASU really gave me this opportunity, and now I have a greater understanding about what the world is,” she said.

Holly Beretto is a freelance writer based in Houston.

Right: Megan Jehn, director of graduate programs for the School of Human Evolution and Social Change.



game-watching parties for big athletic events and provide speaker series designed to expose fellow Sun Devils and those interested in the school to new ideas, entrepreneurs and other local luminaries.

“Our office offers training for international alumni in terms of how to recruit and interview students, as well as what sorts of events international groups might host,” says Pierson. “They are an essential link between ASU and the world.”



Potential international alumni connection group leaders can learn more by visiting alumni.asu.edu or calling the Alumni Association at 1-800-ALUMNUS.

Alumni groups tour the British Parliament in the United Kingdom (left) and hear from ASU Foundation For A New American University CEO Rick Shangraw during a tour of Hong Kong (above right).



A WORK IN PROGRESS

Phase two of Sun Devil Stadium reinvention emphasizes cultural possibilities

By Joe Healey
Photography by Jennifer Stewart

From the idea's debut in 2012, the reinvention of Sun Devil Stadium has been a test lab for ASU President Michael M. Crow's New American University concept as it applies to a major university landmark. The challenge all along has been: how to reimagine the stadium completely and re-create it to meet the needs of the 21st century, while also augmenting its timeless appeal with alumni and fans?

The reinvention of ASU's sports mecca has been divided into three stages. The first phase, conducted between the 2014 and 2015 football seasons, focused largely on upgrading infrastructure not typically seen on game day. There was a heavy emphasis on improving the student experience, and a two-pronged "Double Inferno" student section was created, with lower bowl seats available for ASU students in both the north and south end zones.

"Our students really enjoyed and I think benefitted from a very upgraded student section experience in phase one," said ASU's Vice President for University Athletics and Athletics Director Ray Anderson. "The feedback

we have received has been extremely positive and the Double Inferno concept was very popular with the students as well as the football team, so it was a success by all measures.”

The first phase of the project laid the foundation for the subsequent steps in the reinvention, and also demonstrated how unique this undertaking was, according to ASU alumnus Ryan Abbott, senior vice president of Sundt Construction. Hunt/Sundt is the stadium’s general contractor.

“As a Sun Devil myself, I am proud to be associated with this project as we all work together to reinvent the stadium and create an unbelievable experience for fans,” said Abbott, who earned his bachelor’s degree from ASU in 2001 and his M.B.A. in 2008. “This reinvention is a complex, multi-stage undertaking – a fantastic challenge.”

The hallmark of stage two, which is taking place on the Tempe campus right now, will be expanding the facility’s primary purpose from a modern sports stadium into a community hub - a place that Sun Devils and friends can visit all year to experience a variety of sports, arts, cultural and community programming.



Above: Athletics Director Ray Anderson called the first phase of stadium reinvention “a success by all measures.”

Left: A new suite deck is one of many coming attractions at the stadium.

Right: Ryan Abbott from Sundt Construction surveys construction progress.

The next step: becoming Sun Devil Central

As the 2015 football season wound down, an exciting new component to the project was introduced when Colleen Jennings-Roggensack, executive director of ASU Gammage and associate vice president of cultural affairs for ASU, was selected by President Crow in November to brainstorm, program and oversee additional events in Sun Devil Stadium. The goal of what is being called the “SDS 365” initiative is to widen the functionality and cultural appeal of the new Sun Devil Stadium, but also to create a community center in the heart of ASU’s Tempe campus.

Project leaders for the reinvention emphasize that phase two will re-engineer this major collegiate athletic venue into not just a place to house a prominent gridiron program that is used six or seven times a year, but into a center that will host a multitude of academic, social and other university events 12 months of the year, earning the future all-purpose facility the unofficial moniker “Sun Devil Central.”

“President Crow felt very strongly that we needed to make sure that building is used for more than just football home games, so it was his strong belief that this becomes a space that is active 365 days a year,” Jennings-Roggensack said. “I think that one of the main reasons he asked me to oversee the project is that I know what it’s like to maximize the potential of university assets.”

Jennings-Roggensack, whose career with the university has spanned nearly a quarter of a century, has turned ASU Gammage into one of America’s premier touring venues. She complements her venue management experience with a steady focus on collaboration and expansive creativity with new opportunities.

“Colleen provides value in terms of being able to get the appropriate people together to determine the variety of uses for this reinvented venue beyond just football games,” Anderson said. “Our plan is to bring together student, alumni, faculty and other academic groups together to host studios, galleries, exhibitions, job fairs and many other events, and she has the ability to bring together the people and processes to work through that thought sequence.”



Structural changes create a better facility; funding facilitates progress

The developmental components of the second phase focus primarily on the facility’s west side, with substantial removal of the previous infrastructure in the lower bowl and field level areas. Also, the upper bowl and concourse level are set to be reconfigured and sized to create the framework of a 360-degree walkable concourse, while improvements in fan sight lines and ADA accommodations also are on the to-do list. By the start of the 2016 season, fans will see the appearance of a connected lower bowl, and will have full access in 2017 to walk around the entire concourse.

Another project launching during phase two is the construction of a state-of-the-art student-athlete facility on the north end of the stadium, which will provide enhanced training, nutrition, and academic support for more than 550 student-athletes. ASU also will relocate the football practice facilities on the north end of Sun Devil Stadium to create one comprehensive training area on campus.

In addition to the labor done between the buttes, Sun Devil Athletics tirelessly remains focused on the task of stadium fundraising, set to cover \$85 million of the overall stadium budget of \$256 million, a goal fully believed to be attainable by the project’s end.

“We are progressing extremely well in terms of fundraising and we have every confidence that the amount we need will be raised significantly ahead of schedule,” Anderson said. “With the final phase set to be delivered in August 2017, we’re well on our way to reaching our goal of \$85 million before then.”



“The future looks pretty exciting”

An updated stadium rendering (drawn from the vantage point of the northeast section of the facility) was released in February, depicting a game-day glimpse of what is projected to be the final product. Compared to previous editions shown to the public, this version is considered the most comprehensive and the most precisely aligned with what will exist after the close of the third phase.

As was the case with the first phase, the second phase is scheduled to run through the summer and be completed in time for the start of the 2016 football season on Sept. 3 against Northern Arizona University. After the season, the third and final phase will launch, with the workload slated to consist primarily of remodeling the stadium’s east side and completing the new student-athlete facility.

In all, the second phase – and the stadium reinvention project as a whole – exemplifies the unmatched innovative spirit of Arizona State and further sets ASU as an example in the marketplace. Though business as usual will be conducted on the football field, the overall versatility of Sun Devil Stadium is expected to be unmatched compared to other college sports facilities.

Above: Colleen Jennings-Roggensack has been tapped to transform the stadium into a year-round ASU community hub.

“We will continue to host incredible home football games every year and continue to stage our traditional events, but the reinvention also allows us to take on more events that create a crossover appeal for our audiences,” Jennings-Roggensack said. “The future looks pretty exciting because we’re charting new territory, so whatever we do, we’re going to be the first to do it.”

Nearly 60 years will have passed between Sun Devil Stadium’s 1958 opening and the unveiling of its complete reinvention in 2017, but the completed and upcoming upgrades will set the stadium’s course firmly toward the future and augment ASU’s ability to lead by example among its intercollegiate peers.

“This stadium creates a huge economic engine and from a long-term standpoint we’re making a lot of decisions that are long-lasting and sustainable for the university,” Abbott said. “Ultimately, the reinvented stadium puts ASU in the elite position of being able to recruit and retain premier student-athletes who are going to go out and do fantastic things and inspire others. It also will serve many uses for the broader community where Sun Devils and friends can enjoy amazing experiences.”

Joe Healey '06 B.I.S is a freelance sportswriter based in Tempe.



INFERNO SALE

Lock in your ASU Alumni Association membership before rates increase on **July 1, 2016**. Learn what these changes mean for you.

Visit asualumni.org to learn more or
>> text SPARKY to 41411 <<

Safe zone

ASU researchers study and promote a safer, more just society

By Eric Swedlund | Photography by Dan Vermillion

ASU challenges conventional assumptions and prevailing ideas about the causes and effects of crime, victimization and patterns of violence, through new avenues of scholarly research, and curricula designed to prepare students to work in an evolving criminal justice system. The university's focus centers on cultural changes that can lead to a safer society. Faculty members study how crime and trauma impact victims, with the ultimate goal to improve the situation for victims and create a strong culture of prevention. Bringing a range of disciplines – including criminology, psychology, social justice and more – to bear on large-scale societal problems, the breadth of ASU's research creates a more comprehensive response for those impacted by crime.

Unraveling cycles of victimhood

Despite common perceptions, the criminal justice system doesn't always easily break down into simple categories of "offender" and "victim." In many cases, scholarly data describes a far more nuanced situation, says

Kate Fox, an associate professor in the School of Criminal Justice and Criminology. Fox's research specializes in cycles of violence and victimization, including domestic violence and victimization of offenders, like gang members.

"Gang members are immersed in this criminal world, so scholars often look at them as causing crime and how to prevent it," Fox says. "I like to look at the flip side of the coin: to what degree are offenders victims? How could that victimization have exacerbated their exposure and involvement in criminal behavior? Throughout the literature, gang members often say 'I joined a gang for protection.' But it's an unfortunate paradox that once they join the gang, they're significantly more likely to be victimized."

Right now, Fox is conducting two research projects, one about how to do research in correctional facilities with correctional populations, and one involving a northern Arizona domestic violence agency. Partnering with Page Regional Domestic Violence Services,

Right: Kate Fox, associate professor, School of Criminal Justice and Criminology.



**The breadth of ASU's
research creates a more
comprehensive response
for those impacted by crime.**

Fox will examine how effective such centers are and how their services can be improved.

"We'll be looking at the agency's records, financial records, the services they offer and conducting interviews with the clients and the staff as well," Fox says. "What help did they feel was essential? Was there any help they didn't get? We'll be taking a comprehensive look at how satisfied the clients are and whether there are any barriers to success."

A different level of justice

Some of the barriers to successful crime prevention can be found in the criminal justice system itself, says Robbin Brooks, lecturer in the School of Criminal Justice and Crim-

inology, who joined ASU in 1999 after 14 years as a Certified Juvenile Probation Officer in Indiana, working with victims, victim advocates, families and court personnel.

"Every courthouse throughout America has Lady Justice as a symbol for the criminal justice system, with the blindfold, but the reality is people see example after example of how Lady Justice is not blind and she often rewards those who come from a community that has resources. That frustrates people who don't fall in those categories," Brooks says.

Communities of color, which experience disproportionate levels of police shootings and who are often impacted by state laws perceived as discriminatory, can become distrustful of the police and courts. This distrust can exacerbate small prob-



lems and contribute to continued cycles of violence, Brooks says.

“People’s perception of the system varies based on where their point of reference is, or what their family’s experience has been,” Brooks said. “What I see is people who come from communities of color are very frustrated because they see examples of people who seem to be given a different level of justice.”

Brooks sees a shift beginning to occur in America, with an increase in the last couple years in police officers facing legal sanctions for behavior judged to be outside of proper police procedure and more police departments requiring

Brooks designs her classes, including courses on juvenile delinquency and race, ethnicity and crime, to be interactive, regularly bringing in guest speakers who are working in the criminal justice field, to show the issues from different angles and provide a deeper understanding of how the system operates in the way it does, and

the differences in opinion about what’s effective and what isn’t.

“My students have responded very positively to this and are very appreciative of the chance to ask questions of someone at the Attorney General’s office, or a law enforcement officer, or the medical examiner, or people who have been in gangs, or someone who

“Regardless of having a badge and a uniform, you have a code of ethics to follow – and when you operate outside that, there should be sanctions.”

officers to wear body cameras.

“What the research shows is it diffuses the situation because the person interacting with the police sees the camera and knows there will be independent evidence of what occurs. From my professional opinion, that’s a good move because it helps balance out the interaction,” Brooks says. “Regardless of having a badge and a uniform, you have a code of ethics to follow – and when you operate outside that, there should be sanctions.”

Left: Robbin Brooks, lecturer, School of Criminal Justice and Criminology.

Right: Alesha Durfee, associate professor, School of Social Transformation.



was wrongfully locked up and (later) exonerated,” says Brooks, who is also the Criminal Justice Internship Director. “We talk about those harsh realities and the flaws that our criminal justice system has.”

Putting testimony on the clothesline

Situations in real life often can be more complex than the system easily can manage, says Alesha Durfee, an associate professor in the School of Social Transformation, whose research and teaching focuses on social policy and domestic violence, including mandatory arrest policies and civil protection orders.

“With a lot of my students, what I see is they know about domestic violence and have a real clear picture in their head about what it is, but real life is always way messier than that,” she says. “That’s starting to be backed in some of the research we’re doing.”

With a two-year National Institute of Justice grant, Durfee is collecting 1,200 case files of protection orders filed in Arizona to track what happens to them as they move through the court. Arizona is the only state in country where victims can go to any court to file for protection orders, which can provide greater insights into the mindset of victims. Her project collaborator is Jill Messing, an associate professor in ASU’s School of Social Work, and the project builds on research Durfee and Messing conducted between 2012 to 2015.

“We want to look at where we see a lot of orders of protection filings, where we see very few,” she says. “Are there things that courts could do to make protection orders more accessible to victims? Anecdotally we’ve heard that a victim might file for order of protection in one court when she’s at a shelter in another area because that keeps her safe.”

Durfee also began working as the faculty contact for the Clothesline Project when she arrived at ASU in 2005. The project began in 1990 to address violence against women, with decorated shirts acting as personal testimony.

“It’s a really good way to start the conversation about domestic violence. Generally, that’s really hard to open the door to those conversations. Nobody wants to think about themselves

as a victim. I’ve noticed that as people make the shirts or walk around looking at the shirts, it becomes easier to talk about it,” Durfee says. “Research shows most people who are victims don’t turn to courts or shelter, they turn to their own informal support network. If you’ve had conversations before about domestic violence, you’re more likely to reach out if it’s happening to you or see it if it happens to a friend.”

Assisting the victims

Kennesha Jackson, an ASU alumna who works for the state as a victims’ rights administrator, says she received the right mix of classroom education and hands-on experience to jump di-

rectly into a career working on behalf of crime victims. Her department, a part of the Arizona Attorney General’s office, directly the administration and monitoring of a \$3.2 million dollar Victims’ Rights Fund, which is distributed to 58 criminal justice agencies statewide.

real-world perspective on advocacy and victims’ rights. “I have always been a hands-on learner and the internship prepared me to better serve crime victims in a number of ways,” she says. “I was able to put to action methods and theories learned in most of my courses while also developing new skills I wouldn’t necessarily learn in a classroom setting.”

One central goal tying together much of ASU’s research in the area of crime and victimization is to use data to challenge assumptions and improve the criminal justice system. Durfee offers an example from her domestic violence research.

“Most of our policies have been

“I have always been a hands-on learner and the internship prepared me to better serve crime victims in a number of ways.”

rectly into a career working on behalf of crime victims. Her department, a part of the Arizona Attorney General’s office, directly the administration and monitoring of a \$3.2 million dollar Victims’ Rights Fund, which is distributed to 58 criminal justice agencies statewide.

Jackson initially studied journalism, earning her bachelor’s degree in it in 2010, but covering crime sparked her interest in working closer in the criminal justice system and she enrolled in the School of Criminology and Criminal Justice graduate program the following semester. She received her master’s degree in criminal justice in 2012.

“One of my first courses examined theory and research concerning victimization and consequences for victims, society, and the justice system as well as effective responses to victims’ post-crime needs,” she says, describing what led her to an internship with the Arizona Attorney General’s Office of Victim Services, where she gained a

separation-based policies, thinking that solves the problem. That assumes the abuser won’t move onto another relationship and another victim. A lot of policies are based on these simple ideas that aren’t the reality that most judges and officers face.”

Fox noted that within the College of Criminology and Criminal Justice, as is the case elsewhere at ASU, faculty members are aggressive in applying for grants and looking at innovative ways to conduct research, in order to provide students with the most accurate and comprehensive information.

“I stay up on the cutting-edge research and infuse that into the classroom so students as they go through their lives can take those tools to really think about the consequences of violence in a broader context,” Fox says.

Eric Swedlund is a freelance writer based in Prescott, Ariz.

— JOIN THE EVOLUTION —



BUY A D-BACKS TICKET PLAN

CHOOSE ANY GAMES THIS SEASON TO CUSTOMIZE YOUR OWN PACKAGE

D-BACKS TRIBAL CAP





SAT, JUNE 11 // 7:10PM
courtesy of Gila River Casinos // 20,000

GOLDSCHMIDT BOBBLEHEAD





SAT, JULY 2 // 7:10PM
courtesy of Gila River Casinos // 20,000

D-BACKS SOMBRERO





SAT, JULY 16 // 5:10PM
20,000

BACK-TO-SCHOOL BACKPACK





SUN, JULY 17 // 1:10PM
courtesy of Smile Generation // 5,000 Kids

D-BACKS BP PULLOVER





SAT, AUG 27 // 5:10PM
courtesy of Sanderson Ford // 20,000

dbacks.com 602.514.8400

Presented by
GILARIVER
CASINOS

History... as it happened

ASU connections strengthen popular “Ballad of Arizona” program

By Oriana Parker



The “Ballad of Arizona” program is the brainchild of Jay Cravath, a two-time alumnus of ASU.

Many ASU alums have lived through a number of significant moments in Arizona history, but far fewer understand their meaning or remember them fully. Two Sun Devils – Jay Cravath ‘90 M.Ed., ‘02 Ph.D. and Dan Shilling ‘87 Ph.D. – have set about rectifying this situation in the past four years, creating the “Ballad of Arizona,” a live multimedia storytelling program that has toured the state.

Similar in format to American Public Media’s radio show “A Prairie Home Companion,” the program employs music, storytelling and live radio-style newscasts to explore stories involving important but often neglected events in the state’s history. Cravath, who is a curriculum manager for the Colorado River Indian Tribes and has served as a music and humanities teacher in Chandler, explains that he and Shilling conceived of the idea for the show during the planning for the 2012 Arizona Centennial celebration.

“Looking over a list of planned events, I noticed there were no programs for the arts and the humanities,” he said. “I contacted Dan and we wrote up a grant proposal that was funded by Arizona Humanities (AH), the Arizona affiliate of the National Endowment for the Humanities.”

Drawing from an inventory of 12 stories, the hour-long “Ballad” program is staged via Arizona Speaks, the AH’s speakers bureau. It shares some of Arizona’s most famous and infamous historical moments, including the state’s association with the Buffalo Soldiers (all-Black U.S. Army regiments who were present at key moments in the settling of the American West), the history of Japanese-American internment camps in the state, and the mafia murder of local reporter Don Bolles, as well as less-



Dan Shilling co-hosts the “Ballad of Arizona,” a program that employs music, storytelling and radio-style news reports to relate Arizona’s history.

er-known stories such as the history of Arizona dude ranches. The performance has deep roots in ASU scholarship. In addition to featuring live performances by Cravath and Shilling (who is a faculty research associate with the Julie Ann Wrigley Global Institute of Sustainability and is a former director of Arizona Humanities), the program also includes taped contributions from ASU Regents Professor Peter Iverson; current Navajo Nation Poet Laureate and ASU Professor of English Laura Tohe; and alumna Christine Marin ’74 B.A., ’82 M.A., ’05 Ph.D, an archivist/historian and ASU professor emerita.

Here are a few of the “stanzas” from this well-received ballad, which takes its audience from the creation of the world to very close to the present day.

The Pima Song of the World

One of the oldest stories shared in the “Ballad of Arizona” is a creation story from the Pima Indian tribe.

“It’s important to realize that in preliterate cultures all knowledge was passed down through musical ceremonies,” Cravath noted. “The great hero legends, migrations, and even moral stories were told in song and dance cycles that could last up to 16 days.”

According to the Pima, in the beginning there was only darkness ... darkness and water. Until one day there came forth a man. This man wandered in the darkness until he began to think.

Then he knew he was there for some purpose.

The man placed his hand upon his heart and drew forth a large stick. He used the stick to guide him through the darkness and when he was weary he rested upon it. Then he drew forth from his body little ants, as he had drawn the stick from his heart. The stick was of greasewood and he placed the ants on it. These ants made a ball of the greasewood stick’s gum.

The man placed the ball under his foot and rolled it to make it round all the while singing “Go forth and make

the world, go forth and make the world.” (*Chuh-wuh tuh na-ka-I, chuh-wuh tuh nato*) Then he threw this new earth out into the universe and sang faster: “Now it is done, now it is done.” (*Himalo, himalo/Himalo himacho*)

Vandals bring victory to Miami

A 20th century story that is an audience favorite celebrates the 1951 victory of the Miami High School Vandals, a team of mostly Mexican-American boys who were the sons of men who worked in the town’s copper mines. Thanks to Ernest Kivisto, a Finnish-American coach who believed in their talent and possibility, the Vandals went on a winning spree throughout Arizona during the 1951 season. The Vandals beat teams in Clifton, Globe, Superior, Duncan, and Nogales. In the playoffs, the team overcame the Phoenix Union High School Coyotes and the Monarchs from Phoenix’s all-Black Carver High School for the state championship.

Marin, who tells this story in the program, says that the sports victory helped the boys’ families to realize their dreams of equality for their children. Some members of the 1951 team were able to attend college on athletic scholarships, expanding their career options beyond the working-class lives their parents had lived.

“A history professor taught me that there are people who should be remembered for what happened to them. And there are others who are remembered for what they did,” she said. “As an archivist/



Professor emerita Christine Marin is an archivist/historian who shares the story of the 1951 Miami High School Vandals basketball team in the “Ballad of Arizona.”

historian, I have the duty to write the history of the people so that it won't be ignored or forgotten, and the responsibility to preserve their histories and keep them safe."

Don Bolles and the price of the truth

One of the most gripping stories in the "Ballad of Arizona" presentation is that of Arizona reporter Don Bolles, who was killed by a car bomb in 1976 in retaliation for his award-winning investigative journalism work.

Told in a news-program style, the story discusses Bolles' investigation of the mafia's influence on dog and horse racing in Arizona, as well as a conflict-of-interest scandal involving two state legislators. Bolles and another reporter created a list of almost 200 known mafia members allegedly operating in the state and named them in a story.

It was this kind of fearless writing that earned Bolles being named as Arizona Newsmen of 1974. Those exposed by his reporting were not pleased. On June 2, 1976, Bolles drove to the Hotel Clarendon in central Phoenix to meet an informant who didn't show up for the appointment. Returning to his car, Bolles only drove a few feet before a bomb, placed under his car and detonated by remote control, shattered his lower body. His last words included, "They finally got me ... the mafia."

Brenda Thomson, executive director of Arizona Humanities, reports that, "'The Ballad of Arizona' is one of our most popular programs. Jay Cravath, Dan Shilling and the other contributors introduce residents and visitors to the diverse



Brenda Thomson, executive director of Arizona Humanities.

people and places that make up Arizona's unique history in an exciting manner."

As for Cravath, he has his own take on why the program has such great resonance with state residents.

In a 2015 article in the Mohave Daily News, he said the focus on bringing the past into the present helps the audience feel connected to what is being shared.

"Reporting history as if it is a current event allows people to enter the event more intimately," stresses Cravath.

For a schedule of upcoming "Ballad of Arizona" presentation events, visit www.azhumanities.org.

Oriana Parker is a freelance arts writer based in Phoenix.

GENEROSITY LETS ME REACH FOR THE STARS

"When I was twelve, I saw the movie *Apollo 13* and fell in love with space exploration. Now, because of scholarships at ASU, I will be developing aircraft at a summer internship. Thank you for letting me explore the mysteries of the universe."

— JANET NEVAREZ, aerospace engineering,
ASU School for Engineering of Matter, Transport, and Energy



Learn how you can make a difference. ASU.EDU/GIVE

ASU Foundation
for A NEW AMERICAN UNIVERSITY

ARIZONA STATE UNIVERSITY

2010s

Kathleen Deakin '03 M.Ed., '10 Ph.D.; Laura A. (Walsh) Brown '95 B.A.E.S.E., '10 Ph.D.; and **James B. Blasingame, professor of English,** announced the release by Rowman and Littlefield of their book, "John Green: Teen Whisperer," that investigates the work of this popular teen author.

2000s

Louise H. Kreuzer '07 B.A.E., a third grade teacher of newly arrived refugee and immigrant students in Denver, Colo., announced the release by Rowman and Littlefield of her book, "The Newcomer Student: An Educator's Guide to Ease Transition."

Kristen Hunt '06 B.S. announced the release by Spark Press of her book, "Blonde Eskimo." This fantasy novel for young girls draws from the stories of Hunt's Aleuts Indian heritage.

Jennie Gilbert '05 B.Mus., COO of Retailer Web Services (RWS) in Scottsdale, Ariz., announced the release of her book with Jim Kane, Jr., "Re:THiNK: 11 Surprising Things You Should Do Now to Win Retail Customers in the Digital Age." The work, published by RWS, offers practical advice based on the way today's consumers shop.

♦ **Jacob Gold '02 B.I.S.,** president and CEO of Jacob Gold & Associates, announced the release by Wiley of his book, "Money Mindset: Formulating a Wealth Strategy in the 21st Century."

Surendra Shakya '02 M.A. announced the release of his first Kindle book, "The Tea Run: A True Story of Charitable Children from Nepal," about a group of children who cared for three homeless adults for 16 months. Proceeds from the book will support the education program in which these children participate. The publication is available on Amazon.com.

Shawn E. Klein '01 M.A., '10 Ph.D., an instructor in philosophy in the School of Historical, Philosophical and Religious Studies, announced the release by Open Court Publishing Company of his book, "Steve Jobs and Philosophy: For Those Who Think Different." The work is available on Amazon.

1990s

Peter B. Doran '99 B.A., '99 B.A., director of research at the Center for European Policy Analysis in Washington, D. C., announced the release by Viking of his nonfiction book "Breaking Rockefeller: The Incredible Story of the Ambitious Rivals Who Topped an Oil Empire." The work details the undoing of Standard Oil's monopoly by Royal Dutch Shell early in the 20th Century.

Corey Seemiller '95 B.A. announced the release by Josey-Bass of her book with Meghan Grace, "Generation Z Goes to College." The work discusses characteristics and perspectives of the generation born from 1995 through 2010.

H. Lee Barnes '92 M.F.A., an English and creative writing teacher at the College of Southern Nevada, announced the release by the University of Nevada Press of his novel, "The Gambler's Apprentice," that tells the story of a teenage boy growing up in Texas during difficult times.

♦ **Stephanie de Lusé '91 B.S., '95 M.A., '99 Ph.D.,** a principal honors faculty fellow in Barrett, The Honors College at ASU, announced the release by Arcadia Publishing of her book, "Legendary Locals of Tempe." The work investigates the history of innovative citizens who worked together to chart the early course of the city.

1980s

Amy Fellner Dominy '87 B.S., '04 M.F.A. announced the release by Ember of her young adult novel, "A Matter of Heart," about a young athlete whose life is redefined by a surprising diagnosis.

Tobi Lopez Taylor '86 B.A., '99 M.A. announced the release by The History Press of her new book, "Orzel: Scottsdale's Legendary Arabian Stallion," the true story of a record-breaking racehorse, known as the "Arabian Secretariat," and his legacy.

Barbara L. Fleming '82 M.B.A., announced the release on Kindle Direct Publishing of the third and final book in her "Sailing ¡Qué Bárbara!" series. The work is titled "Sailing to OZ: Head-Ons and Headhunters – ¡Qué Bárbara!" and completes the humorous accounts of the author's and her husband's sailing adventures in the Caribbean, through the Panama Canal and across the Pacific Ocean to Australia.

1970s

♦ **Carol Simon '77 B.S.,** a hotel general manager, announced the release by Apple Academic Press of her book with Vincent P. Magnini, "A Hotel Manager's Handbook: 189 Techniques for Achieving Exceptional Guest Satisfaction." The book is available on Amazon.

Brian Thiem '76 B.S., a 25-year veteran of the Oakland Police Department, announced the release by Crooked Lane Books of his debut novel, "Red Line: A Matt Sinclair Mystery." The book is available on Amazon and at additional booksellers.

Pattie Leo Krohn '75 B.A. announced the release by CreateSpace of her third novel, "I Love You David Foster Wallace." Her work is available on Amazon.

Tom Jacobs '72 J.D., a retired judge, announced the release by Free Spirit Publishing of his book with Natalie Jacobs, "Every Vote Matters: The Power of Your Voice from School Elections to the Supreme Court," that encourages teens to understand the importance of voting to the democratic process.

1960s

♦ **Sonja White David '63 B.A.E.** announced the release by The History Press of her book, "Apache Sunrise: Memories from San Carlos," about a family's five-year experience of living and forming lasting friendships on the San Carlos Apache Reservation in Arizona.

Kinga Szakats Nijinsky Gaspers '69 B.Mus., '93 M.A., granddaughter of famed dancer Vaslav Nijinsky, announced the release by Biblio Publishing of her nonfiction book, "Nijinsky in America: The American Tour of the Ballet Russe, 1916-1917," that draws from the personal journal of the dancer.

Faculty and Staff

Laurie Mook, assistant professor in the School of Community Resources and Development, announced the release by University of Toronto Press of her book, "Understanding the Social Economy of the United States." The work is co-authored by John Whitman, Jack Quarter and Ann Armstrong.

Chad Noreuil, clinical professor of law in the Sandra Day O'Connor College of Law, announced the release by Carolina Academic Press of his book, "Law 101: What Law School's Really Like," that offers advice to students in law school.

Matthew T. Prior, assistant professor of English, announced the release by Multilingual Matters of his book, "Emotion and Discourse in L2 Narrative Research," that discusses the interactional management of emotionality in second language autobiographical interview research.

Awards and Recognitions

Vedran Husic '13 M.F.A., a doctoral student and instructor in creative writing at the University of Missouri, was selected for a National Endowment for the Arts Creative Writing Fellowship for 2016. The \$25,000 award is designed to give writers the time and space to create, revise, conduct research and connect with readers.

Christoph Weber '10 B.A. is among the winners of the Writers of the Future contest, an international contest for writers of science fiction and fantasy. The award includes a cash prize, participation in a focused workshop, and publication in the annual anthology, "L. Ron Hubbard Presents Writers of the Future."

Iliana Rocha '08 M.F.A., a doctoral candidate at Western Michigan University, announced the release by the University of Pittsburgh Press of her poetry collection, "Karankawa," that explores ways in which personal histories are constructed. The book received the 2014 Donald Hall Prize for Poetry that is sponsored by the Association of Writers and Writing Programs.

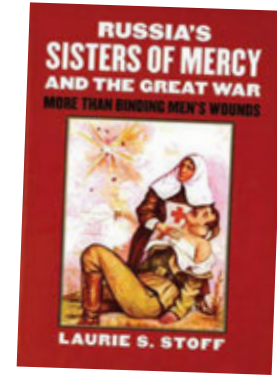
Kevin Haworth '07 M.F.A., director of the MFA Program in Creative Writing at Carlow University, was selected for a National Endowment for the Arts Creative Writing Fellowship for 2016. The \$25,000 award is designed to give writers the time and space to create, revise, conduct research and connect with readers.

Brent Michael Davids '92 M.M., composer and founder and owner of Blue Butterfly Group in St. Paul, Minn., announced the airing of his complete opera, "Purchase of Manhattan," on WCNY-FM's "Fresh Ink" program on Nov. 22, 2015. The work, which was commissioned by The Lenape Center, corrects historical accounts concerning the "purchase" of Manhattan Island in New York City from its original, Native American occupants.

Lois Roma-Deeley '84 B.A., '88 M.F.A. received an artist research and development grant for 2016 from the Arizona Commission on the Arts. The grant will support her development of a book-length series of linked narrative poems titled "Voices from the Desert: Witnesses and Outsiders."

Richard C. Collins '63 B.S., retired rancher, animal scientist and researcher, received the 2015 New Mexico-Arizona Book Award for Best Political Book for his nonfiction work, "Riding Behind the Padre: Horseback Views from Both Sides of the Border." This book records his horseback trip with a group of Mexican riders along the pathways followed by Eusebio Francisco Kino, and it investigates the roots of current conflicts and complexities along the Arizona-Sonora border.

Al Bates '52 B.A. received Westerners International's 2014 Coke Wood Award for Historical Monographs or Published Articles for his monograph, "Prescott Begins."



Russia's Sisters of Mercy and the Great War: More than Binding Men's Wounds

By Laurie S. Stoff, Lawrence, KS: University of Kansas Press, 2015

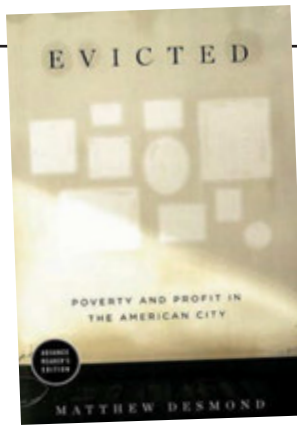
History is replete with stories not told; there is simply too much history to tell all. Some omissions are particularly significant, though, in their power to illuminate the history of large numbers of people or new options for groups' contribution to communal efforts. The story of Russian nurses in World War I is one such tale that was painstakingly researched and recorded by Laurie S. Stoff, senior lecturer in Barrett, the Honors College at ASU. This work is a detailed look at the impact on the options available to women in Russia based on factors such as socioeconomic status, prevalent assumptions about women's and men's "natural inclinations," the societal implications of war and uncommon opportunity as these options evolved across the years of the Great War. Additionally, the book demonstrates the many contributions made and hazards faced by nurses who serve the military during wartime. It shows clearly that these nurses, female and male, worked under conditions that were as dangerous and demanding as those faced by troops on the front lines.

The effect of the nurses' service was to create new ways of viewing women in the world. This book draws from personal diaries, contemporary periodicals, and eyewitness reports to tell this previously untold story and the more individual accounts of specific women who served. It is a contribution to the history of women, the history of nursing and a more complete understanding of the far-reaching effects of the First World War.

Attention Sun Devil authors:

ASU Magazine seeks news of books published within the past two years by degreed alumni, students, and faculty/staff members of Arizona State University for our Just Published section. Include the author's full name, class year(s)/degree(s), email address and phone number. Email notices to alumni@asu.edu.

The magazine also reviews a select number of books each year in its Shelf Improvement section. Self-published books will not be considered for review. To be considered for inclusion, mail a complimentary copy of the book (which should have been published in the past 24 months) to Book Review Editor, ASU Alumni Association, Old Main, 400 E. Tyler Mall, 2nd Floor, Tempe, AZ 85281.



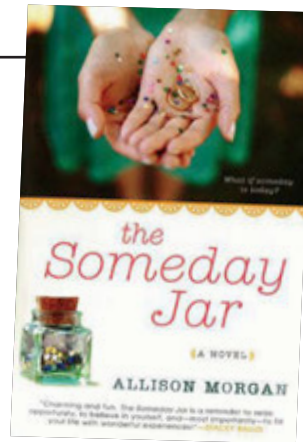
Evicted: Poverty and Profit in the American City

By Matthew Desmond '02 B.S., '02 B.S., New York: Crown Publishers, 2016

With "Evicted," Matthew Desmond, associate professor of sociology and social science at Harvard University and co-director of the Justice and Poverty Project, presents an impassioned, documented and illustrated plea for the United States to look closely at what we have become as a result of widespread indifference to actively oppressive, denigrating housing policies. As demonstrated in this nonfiction work, current laws, policies and practices not only trap families in a downward spiral of increasing poverty but also help to create that poverty. The book details the experiences of eight families who are caught in a seemingly endless cycle of evictions and homelessness as they strive for stability and minimal financial security in the not really low-rent areas of Milwaukee.

In order to comprehend the complexities of these families' situations, Desmond joined them for a year and a half, lived where they lived, moved when evictions were imminent. He learned alongside these families what was required to keep a roof (however temporary) over one's head and still keep on living as part of humanity. To verify both his understandings and the extent of this oppression, Desmond consulted existing statistics. Where those were absent, he conducted separate and extensive survey research of his own.

"Evicted" is grounded in stringent, well-designed, imbedded ethnography supported by external facts. It educates readers and calls them to action. Not for the faint of heart, the book is narrative nonfiction as it should be written, with living characters and intertwining plots. It engages, informs and motivates.



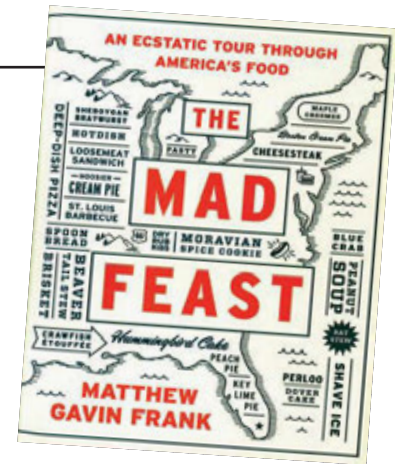
The Someday Jar

By Allison Morgan '93 B.A., | New York: Berkley Books, 2015

Born with a lively, adventure-seeking spirit but raised to seek security and the protection of marriage to just the right man, Lanie Howard is engaged to well-to-do real estate broker, Evan Carter. Her mother is delighted. Evan is planning their perfectly correct, elaborate wedding and inviting his most highly valued (read that rich and well-placed) clients. Lanie needs only to keep doing her job at Evan Carter Realty and select a wedding dress. Both present some challenges, but even with help from her best friend, a wedding planner and her mother, Lanie simply cannot focus on finding the dress. Time is getting short when she comes across the final gift given her by her long-absent father—a small glass jar with cork stopper.

Dubbed "the Someday Jar," it contains fortunes from the wall of their favorite Chinese restaurant. On the back of each one is written something that Lanie hopes to accomplish someday. Before he left Lanie and her mother in pursuit of his own adventure, her father made Lanie promise to achieve each of the aspirations in the jar before she married. With the support of her best friend and against the resistance of her mother and fiancé, Lanie sets out to accomplish each of the tasks that have rested in the jar since her childhood, plus a few recent additions. In the process, she uncovers much about herself, her past and her true wishes for the future.

With this debut novel, Allison Morgan presents an engaging story with enough twists and surprises to keep readers eager for more and guessing what may come next. There are some laugh-aloud scenes and some frustrating, can't-you-see-what's-happening situations. This work is easy reading with a serious reminder to consider your dreams and take charge of your own life.



The Mad Feast: An Ecstatic Tour Through America's Food

By Matthew Gavin Frank '06 M.F.A., New York, N.Y.: Liveright Publishing, 2015

Be forewarned, fans of all things foodie – Matthew Gavin Frank's book "The Mad Feast" is neither a cookbook of American regional cuisine nor is it a picture-filled appetite accelerant. Instead, Frank has created a literary dish far more complex and nuanced than the foods about which he's writing. He has selected one dish for each state and used it as a jumping-off point to explore what makes that place unique. It's creative nonfiction, to be sure, but many of his essays are truly poetic meditations on the ingredients and the preparation methods, as well as the history, culture and traditions of the state itself.

Some of the selections are what you'd expect – Florida is represented by Key Lime Pie, for example. However, some are more surprising: in the chapter about Kansas we learn about bierocks (an Eastern European stuffed meat dish much like a calzone or an empanada), and Wyoming's contribution to Frank's edible lectionary is something called "Milk Can Supper," a sort of sausage soup. Readers who love food's role in shaping our culture, and the history that bursts from each bite, will devour this book. It is a rhapsody of Americana, with each chapter's "serving" nourishing with careful writing and impeccable imagery.



Innovation and tradition

Recent alumni activities blend the best of old and new

By Liz Massey

Thousands of Sun Devils paid tribute to ASU football hero Pat Tillman at the 12th annual Pat's Run.

It's hard to escape the word "innovation" at ASU – as the standard-bearer for the New American University, the institution often doesn't do things the way "they've always been done." The results of all this educational invention have been positive, so much so that U.S. News and World Report placed ASU at the top of its list of Most Innovative Schools in 2015.

And yet, even the most paradigm-breaking innovation is built on what preceded it. At Arizona State, faculty, staff and students all draw upon the university's strong traditions to lay the foundation for creating new ways to learn, connect and solve the world's most pressing challenges.

The ASU Alumni Association also participates in this dynamic, launching new events, programs and activities, while maintaining the university's most revered traditions. Here's a quick recap events held over the past few months by the ASU Alumni Association.

Signature events celebrate entrepreneurship, Tillman's legacy, and Golden Grads

The Alumni Association inaugurated a new tradition on April 27 when it hosted the Sun Devil 100 Awards for the first time. The event, formerly known as Sun Devil Select, included Tempe campus tours, and an award ceremony that honored Sun Devil-owned and Sun Devil-led businesses. Nearly 200 faculty, staff, alumni and community members participated in this celebration of ASU's entrepreneurial spirit.

A few days before that, on April 23, ASU alum-

ni both in the Valley of the Sun and across the nation, paid tribute to ASU football legend Pat Tillman by participating in the 12th annual Pat's Run, a fundraiser for the Pat Tillman Foundation. The Alumni Association's network of geographic chapters hosted many of the 32 Pat's Run "shadow runs" held across the country in conjunction with the race in Tempe; a total of about 3,200 runners and walkers were involved in these events.

Finally, the association welcomed back the



The Class of 1966 participated in Spring Commencement during their Golden Reunion.

Class of 1966 to its Golden Reunion, held during Spring Commencement week on May 9 and 10. Participants had the opportunity to tour campus facilities, participate in the Undergraduate Commencement ceremony, and socialize with each other during several catered meals. Nearly 100 graduates and guests enjoyed the reunion.

Career events amplify alumni professional development plans

The ASU Alumni Career Services program had a busy late winter and early spring. Alumni under age 35 were invited to a Young Alumni Career Night at the Tempe Center for the Arts, which featured expert advice on topics ranging from the nuts-and-bolts of resume writing and interviews to perfecting one's LinkedIn profile. The program also continued its popular online networking series, with events that featured virtual chat sessions with other alums related to working in India and other international locations, achieving work-life balance, and working for Amazon.com.

Career-minded Sun Devils also had the chance to participate in the Sun Devil Career Mastery™ Challenge, an email learning experience that offered participants a series of career mastery tips delivered over the course of four weeks. May Busch, an ASU Executive in Residence who is also an executive coach, speaker and author, presented the program, which was extremely popular with ASU alumni.

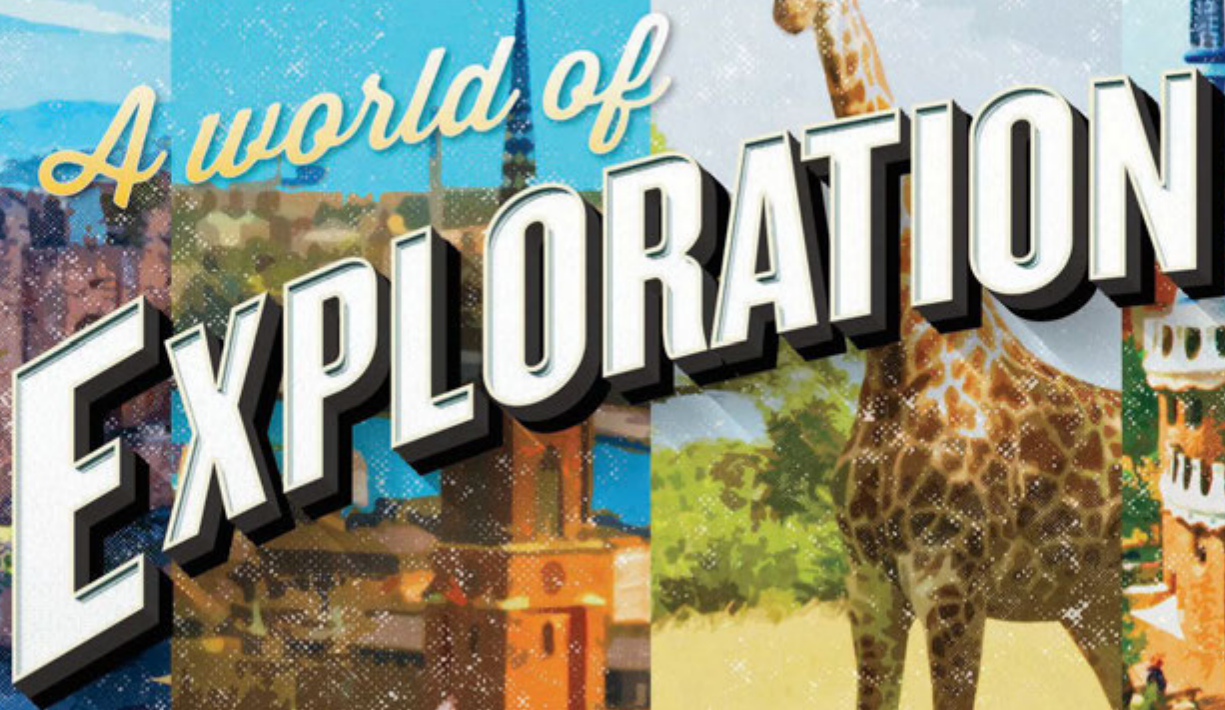


More than 30 student teams competed for dirty glory in the Oozeball mud volleyball tournament on April 2.

Fun and fellowship for the young – and young at heart

The Student Alumni Association (SAA) hosted its Oozeball mud volleyball tournament on April 2, and 32 student teams rolled in the mud for Sun Devil glory. This year was the 32nd annual edition for the event.

The Young Alumni chapter of the association held several events recently, including a "Paint and Pitchforks" night at The Brush Bar in Scottsdale on Feb. 24, during which young alums were able to receive a painting lesson while socializing over adult beverages. The chapter also hosted a Night at the Phoenix Suns on Feb. 19, during which 200 Sun Devils watched former ASU basketball great James Harden as his Houston Rockets took on the Suns.



A world of EXPLORATION

ASU Travel & Tours offers global options for Sun Devil adventurers

As the ASU Alumni Association's premiere travel service, ASU Travel & Tours handles the all the details, while you enjoy the experience of a lifetime.

- ASU alumni travel together throughout the year, overseas and within the United States.
- This year's trips include Antarctica, Australia, Africa, Asia, Scandinavia, Maine, Alaska, the Mediterranean, the Holy Lands and more.
- For more information about ASU Travel & Tours, visit alumni.asu.edu/travel or call 1-800-ALUMNUS.
- Sun Devils can find exclusive Phoenix-area hotel deals on the Alumni Association's Travel Portal at alumni.asu.edu/services/travel/travel-arizona.

1 - Arizona's Official State Historian Marshall Trimble '61 B.A.E., '63 M.A.E. explored Celtic Lands with help from the experts: "Besides David Eisenhower, there were several other speakers, including university professors. We had some great discussions."

2 - In Germany with ASU Alumni Association President Dr. Christine Wilkinson, on a Grand Tour of Europe by train, riverboat and more!

3 - Onboard ship in the Greek Isles with Alumni Association Executive Director of Operations Martha Byrd — experiencing luxury, style and adventure.

4 - At the Colosseum in Rome on the 16-day Europe Graduation Tour of four countries with recent grad Abby Koier '15 B.S.: "This was my first trip to Europe, and what a trip it was ... laughter, good times and unique experiences!"

5 - ASU Travel & Tours was among the first U.S. groups to visit Cuba after travel restrictions were lifted. Traveler Pat Healy '68 B.S., '69 M.A. asserted: "A trip with ASU Travel & Tours is unique, because it gives you an opportunity to travel with fellow Sun Devils, and that's what made Cuba special for me."

6 - Artists Judith and Steve Puthuff '63 B.S.E. found plenty of imaginative material on their trip to Africa, and enthused, "ASU Travel is the epitome of quality. The locations, fellow travelers, camaraderie, education value, uniqueness and total value are unsurpassed. The trips feed our love of lifelong learning."

7 - Travelers on the Alumni Association's Africa trip enjoyed a safari experience when they got up close and personal with the natural setting and abundant wildlife there.



1



3



2



4



5



6



7

Reports from the Sun Devil Nation

Austin

In January, we had a family fun night to watch the Texas Stars hockey team, followed by our annual Pac-12 trivia night in February. In March, we hosted a Pac-12 Puppy Pub Crawl for our annual ASU Cares service project. We enjoyed gorgeous weather, furry friends, and great company as we promoted a wonderful cause. This year our contributions from the event went to the Austin Humane Society.

In early April, we held our annual golf tournament at Teravista Golf Club. All the money raised went toward our local scholarship program. At our Pat's Run shadow run we had about 50 participants who ran 4.2 miles around Lady Bird Lake and finished off with local Torchy's breakfast tacos waiting at the finish line. This was a great event for everyone and brought pride to our Sun Devil alumni group.

Stay posted for details on our annual wine tour and a Round Rock Express baseball game. To mark the beginning of the football season, we will again participate in the annual Pac-12 tailgate, our last chance to be friendly with our local conference alumni before the season starts. We definitely will be going down the road to the University of Texas – San Antonio game at the Alamodome on Sept. 17. Let's make our presence known! Forks up Sun Devils!

Chicago

Our chapter has been busy so far in 2016. Our chapter bowling league featured two teams: Sparky's Strikers and Sun Devil Gold, who finished strong against other Pac-12 alumni teams. We celebrated ASU Cares month in March by volunteering at the Lakeview Pantry. We kicked-off April with a successful Pat's Run shadow run; we are so glad to continue to see the growth for this event each year.

Don't forget to join us this summer for ASU Night at Wrigley, as we watch the Cubs vs. Diamondbacks. Stay tuned for a welcome-back student event, and of course our Sun Devil Send-Off, which introduces incoming students to ASU.

College of Nursing and Health Innovation

May at the college has focused on congratulating our new graduates and the Class of 1966! A reception celebrating our "Golden Grads" 50th anniversary was held May 11.

Our academic affiliate will be hosting our second annual overnight Camp CONHI ex-

perience in Prescott Aug. 13-14. Last year, almost 200 students participated. This student engagement initiative is designed to connect first-year students through activities and intentional programming. Students get to meet their peers, receive tips of the trade from upperclassmen, engage with faculty and alumni, and interact with college leadership.

This fall, we will host our second annual Health Careers Exhibition, an event focused on supporting future professionals in the nursing and health industry. We encourage our alumni to participate and share your experiences to provide students with career advice and guidance. If you would like to participate as a mentor for Camp CONHI, as a professional with our Health Careers Exhibition, or would like to be engaged in other ways, email conhi.alumni@asu.edu or call 602-496-7431.

Dallas/Ft. Worth

Our chapter would like to thank those who were able to join us for another great Pat's Run shadow run and our ASU Cares project this spring. Your participation creates our local Sun Devil experience!

As we look forward to the summer, we'll be hosting our annual Sun Devil



Happy nursing students participate in the 2015 Camp CONHI.

Send-Off and other exciting opportunities to gather with Sun Devils in the Dallas/ Ft. Worth area. To stay up to date on all the latest ASU alumni happenings in the DFW Metroplex, follow us on Facebook at dfwsundevils.

Ira A. Fulton Schools of Engineering

Our academic affiliate supported the Order of the Engineer ceremony on March 31, where engineering students and alumni make a lifelong commitment to uphold the integrity, honesty and values all engineers should possess to better our society.

We also encourage our alums to participate and connect at ASU affinity luncheons hosted by companies in Phoenix who employ our engineering alums. A representative will be there at these events to answer questions about getting involved with the chapter and reconnecting with the engineering schools.

Mark your calendar for Sept. 6 for our affiliate meeting held at the Brickyard Building on Mill Ave. This will be a great chance to get involved with what we are doing!

Flagstaff

Our club enjoyed a fun and spirited spring, hosting alumni gatherings, a Pints for Pat fundraiser for the Pat Tillman Foundation, and an alumni-owned bar crawl. We also created a local team that made the trip “down the hill” to participate in Pat’s Run in Tempe.

We are excited as we move into the summer and northern Arizona Sun Devils should look for future communications about an upcoming Sun Devil Send-Off and our fall events! Go Sun Devils!

Georgia

Our chapter kicked off 2016 in a way that only sweet-tea-drinking, barbecue-eating, peach-state loving enthusiasts could dream of a few years ago. This spring we held monthly “Foodie Tuesday” outings to explore Atlanta’s bustling food scene; held our St. Baldrick’s charity event to help raise money to fight childhood cancer as our ASU Cares service event; hosted monthly Saturday coffee chats in the northern suburbs, in conjunction



Dallas/Ft. Worth alums and friends celebrate a successful Pat's Run shadow run.



The Georgia chapter celebrates Sun Devil pride with some sweet tea and barbecue.



The Idaho Chapter shows their pride with some social media style.

with ASU’s educational partner, Starbucks; and hosted a Pat’s Run shadow run in April, which has grown into the South’s largest 4.2 mile run.

You can be a part of our activities, too! Look us up on social media or visit our web page to sign up for our email list.



Las Vegas alumni congratulate men's basketball coach Bobby Hurley (second from right) after a spring victory.

Idaho

Idaho Sun Devils love our beautiful state and love our alma mater! Whether we are watching football in Meridian or hiking the Boise foothills in the fall, we always are ready to share our maroon and gold pride.

We had a very successful spring as we volunteered at the Idaho Botanical Gardens for ASU Cares, and hosted a Pat's Run shadow run along the Boise River in Eagle, Idaho. If you would like to learn more about our chapter, or if you are new to the area, please reach out to us. We would love to have you join in all the fun that Sun Devil nation has to offer in the beautiful state of Idaho.

Iranian-American Alumni

Our alumni club held its food drive and scholarship award banquet at the Memorial Union Terrace Hall on March 26. The event was held in participation with ASU Cares month to collect food and nonperishable items for the New Leaf Domestic Violence Shelter for women and children in Mesa, Ariz. We also chose to award the winners for our scholarship program during this event to encourage our future students to become involved with volunteering programs supporting their community. Funds for these scholarships were raised by generous ASU alumni and community members during a successful fundraising event held earlier in the spring.

Las Vegas

In the spring we cheered on ASU men's basketball to victory when they traveled to Las Vegas. We even had the opportunity to congratulate the team and head coach Bobby Hurley after the game. We also hosted a successful Pat's Run shadow run. We love that this event attracts both locals and visitors.

Keep a look out this summer for our Sun Devil Send-Off event! We'll also start planning for our fall football game-watching events. Last fall, we were able to raise \$400 for our student scholarship fund at an "Eat Wings, Raise Money" event at Buffalo Wild Wings, and we also enjoyed a visit from Clifton Alapa, a member of ASU's legendary undefeated 1975 team, at another game watch. This year should have similar levels of excitement and engagement!

Leadership Scholarship Program

Our chapter hosted its annual professional alumni mixer on Feb. 2, where current ASU LSP students from diverse educational backgrounds met to talk about professional life after college. This event continues to be a success; students come with questions, and alumni come to share, mentor and provide some insight into different post-graduate opportunities. We had some excellent breakout sessions on graduate school programs, study abroad/ the Fulbright Scholars program, networking, and entrepreneurship.

Alumni who attended the mixer hailed from a range of fields including medicine, law, nursing, event management, higher education, and entrepreneurship. After the mixer, current students and alumni spent time enjoying dinner and networking regarding future goals. Students were able also to learn more about the Dr. Christine Wilkinson Scholarship award. Thank you for all the alumni who attended. We look forward to building our networking reach even further next year!

Los Angeles

It's been a busy winter and spring in Los Angeles. We hosted our second annual Pac-12 pub crawl, an ASU Cares volunteer event at the Ronald McDonald House, our eighth annual Pat's Run shadow run in Hermosa Beach, and events supporting the baseball team in Long Beach and Westwood.

This summer looks to be equally busy and fun, with our annual trip to Dodger Stadium, wine tasting, LA Stories 'Alumni in Media and Entertainment events, a night at the Hollywood Bowl and Sun Devil Send-Offs dotting the calendar. Mark your calendars now for Sparky's Touchdown Tailgate for the ASU at USC football game on Oct. 1 at the Coliseum! We look forward to seeing you at any of our upcoming events.

Michigan

Our group hopes to build on momentum gained in 2015 through new events and alumni connections that have been enhancing our profile and building engagement.

For example, our Cactus Bowl party held at the beginning of this year led to a growing relationship with Detroit-area alumni

of the Thunderbird School of Global Management, which is now part of ASU. This is something we are enthusiastic about as we look to leverage the networks of both of our groups to further engagement for future events and membership growth.

We're growing the Sun Devil nation in the Detroit area through hosting or participating in early 2016 events such as Destination ASU, a networking event for prospective Sun Devils; our ASU Cares event supporting the Liberty Riders therapeutic horseback riding program; hosting our second annual Pat's Run shadow run; and holding a Sun Devil Send-Off to welcome new Sun Devils to the ASU family.

With the renewed enthusiasm we have seen at these events in addition to an improved social media presence, we are optimistic that efforts to build the Detroit area network of Sun Devils are creating an exciting 2016 for our group!

National Capital

Our chapter has been busy over the last several months with involvement in social events, volunteering and local sports activities. In mid-December we were fortunate to be a part of the Wreaths Across America Ceremony in Arlington National Cemetery. Over the winter, we also formed a bowling team, "Sparky's Revenge," comprised of nine members who bowled every Tuesday for six weeks at Downtown DC's Lucky Strike. We finished ninth, but enjoyed the league's slogan of "bowl, socialize, be merry" in a Sun Devil way.

For ASU Cares, we worked with the local community assisting Hart Middle School. Our project helped beautify the campus over the course of a weekend. In April, we began our softball season in the local Capital Alumni League, which consists of roughly 75 alumni chapters in the DC area, including a number from the Pac-12 Conference. The team experienced some early-season success, building on last year's historic run of 12-2.

In May, we held our signature event, a local crab feast featuring Maryland blue crab, at Arlington's Quarterdeck. The event was topped off with a drawing that saw several DC Devils going home with unique ASU-themed items.

New England

Our chapter was proud to support the ASU men's ice hockey team this winter. During their inaugural season with NCAA Division I status, the team traveled to Connecticut to face the University of Connecticut and to Massachusetts to compete against the University of Massachusetts at Lowell and Merrimack College. We were excited when head coach Greg Powers and assistant coach Alex Hicks joined us for the pre-game party and shared their excitement about the team.

We look forward to the Sun Devils returning to the northeast next year to compete against Boston College, the University of New Hampshire, Quinnipiac University and Northeastern University. Go Devils!

Northern Colorado

With community service being one of the pillars of our club's ability to spread the Sun Devil way, our alumni club took part in both ASU Colorado's ASU Cares Day in Lakewood and our own.



The Michigan alumni club continues to grow and build on its momentum.



The National Capital chapter's alumni softball team hoped to duplicate last year's success in the Capital Alumni League.



The New England chapter cheered for the new Division I ASU men's ice hockey team when they visited Connecticut and Massachusetts this winter.

If you're looking to get involved in volunteering, then join us in November, as we'll be contributing to the Children's Miracle Network Hospital during the extra-life.org donation drive.

Planning on camping this summer? Join other Sun Devils as we head up Poudre Canyon to Jack's Gulch campground for our signature Northern Colorado camping weekend, Aug. 12-14.

San Diego

In February, our chapter held a professional development night, featuring two guest speakers and networking opportunities for alumni. ASU also was represented well by our alumni at the southern California filming of the Price is Right's college edition. In March, Sun Devils along with their families ate a delicious brunch to raise funds as part of our ASU Cares project, with proceeds going to the Pajama Project. This year's Pat's Run shadow run attendance was an all-time high, and we cheered on the San Diego Padres at our signature event of the year. As we move into summer, look for dates for our hike and brunch, outdoor movie night and more!

School of Sustainability

This year marks the 10th anniversary of the School of Sustainability (SOS), and we have been celebrating those who made this milestone possible! The campus festival began on April 14 with a Wrigley Lecture by Michael Pollan. The event took place on Old Main Lawn with more than 20 departments/organizations on campus showcasing their sustainability efforts. Thanks to all who made it out for the events and to those whom contributed to the 10th Anniversary fund that benefits SOS students.

We welcomed more than 100 new alumni to our group this year. We are looking forward to seeing everyone at our future events! Our in-state and out-of-state mixers have had great success as well. This spring our alumni hosted more than 30 students for job shadowing activities.

Be sure to attend our monthly garden volunteer day the second Saturday of every month at Escalante Community Garden in Tempe.

Seattle

Our chapter is excited about our full slate of summer events. You can help us welcome future Sun Devils here in Washington during the Seattle-area Sun Devil Send-Off, then join us for our annual cruise around the Puget Sound waters on Saturday, Aug. 13 as part of our "Sunset Sail" event. Reserve your spot today!

This spring, we had a successful ASU Cares event at Northwest Harvest, and a great Pat's Run shadow run in Tacoma. We had incredible participation from alumni, sponsors, the military community and fans of Pat Tillman. We couldn't do any of it without them!

Twin Cities

Twin Cities Sun Devils kicked off 2016 with a trip to St. Cloud, Minn., on Jan. 2 to cheer on the Sun Devil hockey team. About 20 alumni gathered for a social hour prior to heading to the game at Herb Brooks National Hockey Center. Later that month, alumni from Yale University joined us at Runyons for some friendly



With sunny days and a mild climate year-round, there is never a shortage of alumni activities in San Diego.



The School of Sustainability celebrates the 10th anniversary of its founding in 2016.



Seattle Sun Devils volunteered at Northwest Harvest as part of their ASU Cares service project.

competition as our hockey teams battled. Runyons also helped us host a couple men's basketball game-watchings.

In early March, we hosted one of our most popular annual events – the Fork and Bottle Wine Tasting at Spasso in Minnetonka. We hosted our annual Pat's Run shadow run at Lake Calhoun on April 23.

We're always looking for new types of alumni events to put on, and this year, we were excited to field our first ever Fear the Fork bowling team. We had a lot of fun competing against other alumni groups for six weeks at Memory Lanes.

Our signature summer boat cruise on Lake Minnetonka isn't far away, so sign up soon. Be sure to check us out on Facebook (Twin Cities Sun Devils) and Twitter (@SunDevils_MN).

Utah Club

Our alumni club gathered at Players Sports Grille in Midvale for a networking event in February, followed by cheering on the men's basketball team as they took on cross-state rivals Arizona. In March, as part of our participation in the ASU Cares service initiative, we continued to support the Utah Food Bank our time. In April, we hosted a Pints for Pat fundraiser that benefitted the Pat Tillman Foundation.

Mark your calendars for our annual Sun Devil Send-Off in July. We will be hosting a barbeque with fun, fellowship and food. We're excited to award our first scholarship to a Utah student attending ASU in the fall 2016!

White Mountain

Our chapter has been very busy planning our popular Steak Fry and Golf Tournament. The event will be held June 24-25 at Pinetop (Ariz.) Lakes Golf and Country Club. If you want to participate in this great event visit our chapter website and sign up!

You'll be joined at this event by legendary past and present ASU coaches, athletic administrators and past players. Attendees will also get an update on the Sun Devil Stadium reinvention. Come and join in the fun with your fellow alumni and ASU friends. This event raises scholarship funds for ASU students from the White Mountain region. We also donate funds to the Sun Devil Club to help support our athletic programs. Don't miss this epic getaway in the cool pines of Arizona!

W. P. Carey School of Business

To kick off our spring events, our school's alumni joined together and packed boxes for those in need at Feed My Starving Children in Mesa. We were able to send enough food to feed 91 Filipino children for an entire year! Our second annual W. P. Carey Talks event brought in hundreds of local alumni and friends to the Orpheum Theatre in Phoenix for an intimate conversation with a broad range of dynamic and fascinating speakers.

Our academic affiliate ended the Spring 2016 semester by fielding a running team for the 12th Annual Pat's Run in Tempe, hosting our new grad mixer in May, and sponsoring alumni networking opportunities in several cities across the United States. Our affiliate invites all business alumni to attend our upcoming networking receptions, events and professional development seminars, which are listed under the alumni section of the Carey



The Utah alumni club used its ASU Cares service project to support the work of the Utah Food Bank.



W. P. Carey School of Business alumni participate in a service project at Feed My Starving Children in Mesa.

Want to get involved?

See a chapter or club that represents your geographic area, your academic program, or a special interest? Find contact information, social media links, and more photos and information on upcoming activities for all ASU Alumni Association alumni chapters, clubs, connections and affiliates by visiting alumni.asu.edu/groups.

A Hint of success

Kara Goldin '89 B.A.

Despite growing up in Phoenix, where hydration is practically a way of life, Kara Goldin didn't drink much water. In fact, the 1989 ASU grad was downing as many as 10 Diet Cokes a day when it dawned on her: the mother of four needed to ax sugar and artificial sweeteners from her diet and drink more water, for her health's sake.

But "drinking plain water is boring," admitted Goldin who started jazzing up her daily H2O intake with raspberries, blackberries and other fruits when she realized there weren't very many sugar-free products on the market at that time.

"I immediately saw a gap in a very large, competitive industry dominated by men," said Goldin, the founder and CEO of HINT, a San Francisco-based company with a staff of about 40. "But thanks to my time at ASU I learned that if you want something, you have to be a fighter."

Goldin was no stranger to going after her dreams. After graduation, Goldin took a job at Fortune Magazine's New York circulation department and worked her way up the corporate ladder. Once she set her sights on improving what people drink, she developed the flavored water without any artificial sweeteners, calories or preservatives and took it to market in 2004.

Today, HINT is the fastest growing flavored water company in the United States and valued at \$30 million. HINT is distributed nationwide in specialty and mainstream stores including Whole Foods, Starbucks, and Safeway, on college campuses and at Silicon Valley corporate juggernauts like Google and Facebook, both early adopters of the healthful beverage. Goldin recently launched a subscription service and all HINT products, including flavors such



as blackberry, watermelon, kiwi, and blood orange, are sold online, a rarity among beverage companies. There's even a carbonated version called HINT fizz.

Goldin says solving her own addiction to sweeteners and all her hard work building her business has led to a laudable mini-revolution: "We are helping hundreds of thousands of people live a healthier lifestyle."

By Molly Blake, a freelance writer based in Palo Alto, Calif.

Getting to the finish line

Ken Landreaux '14 B.L.S.

Ken Landreaux was a great baseball player at Arizona State University – so much so that in 1977 he was inducted into the ASU Baseball Hall of Fame.

He went on to a 10-year career in the major leagues, playing for the California Angels, Minnesota Twins and his hometown Los Angeles Dodgers. But there was one thing he didn't do.

Finish his degree.

Then, using ASU's online degree-completion option, he achieved that milestone with a bachelor's degree in liberal studies in 2014.

"I'm the type of person, when I start something, there's always something about me getting to the finish line," Landreaux, who played for the Sun Devils from 1973 to 1976, said. "Once you commit to a contract you've got to finish it."

He knows about contracts, after all. Landreaux, 61, wound up at ASU through what he calls "divine intervention." A recruiter had come to the California state championship game looking at a player on the other team; yet, as soon as the game ended, Landreaux had his letter of intent.

"I could have gone to (the University of Southern California)," he said. "There was a choice there. But with a little influence from my parents, they just felt like Arizona State was the place for me to go. That was outstanding."

Landreaux lives in Covina, Calif., now and works with the Dodgers, as well as with Major League Baseball's Urban Youth Academy. Working with kids is a good fit for someone bitten by the baseball bug early.

"From the time the Dodgers came here from Brooklyn over to Los Angeles and I went to my first Dodger game in the coliseum, the game intrigued me," he said. "There was just something, as a small kid, going, I just want to play baseball as long as I can."

Now he helps others try to reach their goals. And he does it with a degree from ASU. He could have completed his degree elsewhere, of course. But really, that wasn't an option.

"My years at Arizona State were so much fun," Landreaux said. "I was fortunate enough to have such an impact on their baseball program. I'm a Sun Devil."

By Bill Goodykoonz, a freelance writer based in Chandler



2010s

Linda Austin '13 M.Ed. taught journalism as a Fulbright Scholar in Burma from May to September 2015. She is a former professor of practice and executive director of the Donald W. Reynolds National Center for Business Journalism at ASU's Walter Cronkite School of Journalism and Mass Communication.



Nicole Herden '13 M.A., formerly curatorial assistant of American and Western American art at the Phoenix Art Museum and curatorial assistant of contemporary art at ASU, accepted a position as curator of art at the Boise Art Museum.

Alexandra Ncube '12 B.A., a star in the musical "The Book of Mormon," conducted a master class for ASU theater students when the touring show was in Tempe last November.

Brendan Corrigan '11 B.S. is the director of surrogate scheduling for Hillary Clinton's presidential campaign.

Stephanie Martinez '11 B.A. stars in a comedy web series called "House Arrest" that follows three unlikely roommates who have all been sentenced to house arrest together.

Jacob Meders '11 M.F.A., an instructor in ASU's School of Humanities, Arts, and Cultural Studies, served on the 2016 Artist Research and Development Grant Review Panel for the Arizona Commission on the Arts.

Katelyn O'Shaughnessy '11 B.A., founder and CEO of TripScope, was

named among Forbes' 30 Under 30 in consumer tech for the 2016 class. TripScope is a travel app that delivers itineraries to clients' smartphones.

Ryan Skinnell '11 Ph.D., assistant professor of rhetoric and composition in the Department of English at San José State University, initiated research into ways in which bureaucracy structures human knowledge. The work draws from rare books and archives collections at the University of North Texas and uses these materials in physical and online exhibits of research findings.



Monica Medrano '10 B.S. founded and serves as director of Abel's House, Inc., a nonprofit organization that provides shelter and other support to people who are restarting their lives following homelessness, drug addiction and release from incarceration.

Opal Tometi '10 M.A., executive director of Black Alliance for Just Immigration, was named among the Chronicle of Philanthropy's first 40 Under 40 listing, which recognizes nonprofit leaders, fundraisers, foundation officials, donors and social entrepreneurs in the United States.

2000s

Ashley Gleckler '09 B.S. joined the national law firm Polsinelli as an associate in its Phoenix office. Her practice is in corporate and transactional law.

Marissa (Henning) Abdo '08 B.S.N., a certified aesthetic nurse specialist, was promoted to senior injection specialist and clinical administrator at the Santa Monica, Calif., location of Skin by Lovely™. Additionally, she was certified to train physicians and other aesthetic healthcare practitioners in the use of new industry products.

Angie O'Neal '07 Ph.D., associate professor of English and chair of the Department of English, Modern Languages and Liberal Arts at Shorter University, was named the university's inaugural Joan Alden Speidel Chair in English. This endowed professorship is awarded by the university every five years to an academician of national distinction.

Shawn Sheehan '07 B.A., who teaches special education and algebra classes in Norman, Okla., is the 2016 Oklahoma Teacher of the Year. He was named among the four finalists for the 2016 National Teacher of the Year Award.

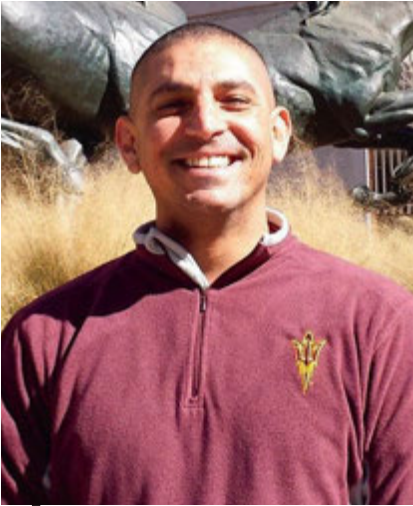
Brooke Todare '07 B.A., '09 M.Np.S., formerly vice president for Pursuant Sports, accepted a position as vice president of community relations and engagement for the Phoenix Local Organizing Committee, which is collaborating with the NCAA to host the men's basketball Final Four games in 2017 in the Valley of the Sun. A former student-athlete, Todare was a four-time letter winner and Pac-10 champion on the ASU golf team.

♦ **Antonia Franco '06 M.Ed., '12 Ed.D.**, executive director of the Society for



Advancing Chicanos and Native Americans in Science, joined the board of Digital Nest, a California-based, educational technology nonprofit organization that delivers technology to underserved rural student populations.

Casandra Hernandez '06 B.A., '09 M.A., formerly artist programs and career services coordinator for the Arizona Commission on the Arts, accepted a position as curator of CALA Initiatives at the ASU Art Museum.



◆ **Saif Al-Alawi '05 B.A.** accepted a position as academic success specialist in the Department of Economics within ASU's College of Liberal Arts and Sciences.



Jeremy Alberts '04 B.S. was elected to the partnership of Weinberg

Wheeler Hudgins Gunn & Dial, a law firm in Atlanta, Ga. His litigation practice focuses on appeals, catastrophic injury, transportation, premises liability, and professional liability.



Ashley (Grovert) Kasarjian '04 B.S., '04 B.A., an attorney at Snell & Wilmer, was named the 2015 ATHENA Young Professional by the Greater Phoenix Chamber of Commerce in recognition of her excellence in business and leadership, exemplary community service, and support and mentorship of other women. Kasarjian serves as vice chair of the board of directors of the Maricopa Community Colleges Foundation, chair of the editorial board of Arizona Attorney Magazine, and writes a legal blog entitled Employment and the Law.

Jay Leo '04 M.B.A. was promoted to chief operating officer for The Springs Living, a senior housing company headquartered in McMinnville, Ore.

Gabriela Muñoz '04 B.A., '12 M.F.A., an interdisciplinary artist, arts educator and arts administrator, accepted a position as artist programs manager with The Arizona Commission on the Arts.

◆ **Khala Stanfield '04 B.S.**, co-president of ASU's Black Alumni chapter, accepted a position as management assistant for the city of Goodyear (Ariz.) finance director.

◆ **Alexander Benezra '03 B.S.**, managing partner and criminal defense attorney with Alexander S. Benezra, PLLC, was elected to serve a two-year term on the State Bar of Arizona's Criminal Justice Section Executive Committee.

Paul Fuhr '03 M.A. is now a vice president of operations manager for JPMorgan Chase in the knowledge management department.

Ellen Yeziarski '03 Ph.D. was promoted to the rank of professor of chemistry at Miami University in Oxford, Ohio, and was recognized with the University Distinguished Teaching Award.



Cristóbal Martínez '02 B.A., '02 B.F.A., '11 M.A., '15 Ph.D., a digital media artist; **Carla Keaton '09 B.F.A.**, a visual artist; and **M. Jenea Sanchez '07 B.F.A., '11 M.F.A.**, a digital media artist, are recipients of artist research and development grants of 2016 by the Arizona Commission on the Arts. This year, 10 of 102 applicants received an award of as much as \$5,000 in funding.



◆ **Frank Healy '01 B.S., Eric Flottmann '01 B.A. and Adam Carlson '07 B.S.E.** are co-owners of Higher Ed Growth. The company was named one of the Valley's Best Places to Work by the Phoenix Business Journal and was included on Inc. magazine's Inc. 5000 list for the second consecutive year.



◆ **Marc Ruzicka '00 Ph.D.** accepted a position as senior manager in strategic sourcing and procurement at Walmart GEC in San Bruno, Calif. In 2015, he became a "White Suiter" with the Tournament of Roses Association in Pasadena, Calif.

◆ **Nichol Luoma '00 B.S.,** formerly ASU's chief procurement officer, accepted an appointment as associate vice president for University Business Services and University Sustainability Operations officer, a position that she had held previously on an interim basis.

1990s

Beth Collins-Burgard '99 M.Ed., a shareholder in Brownstein Hyatt Farber Schreck's Santa Barbara, Calif., office, joined the board of directors for the Goleta Valley Chamber of Commerce.

◆ **Nathan Perry '99 B.S., '08 M.B.A.** accepted a position as vice president of sales and marketing for Athalonz, a sports science and technology enterprise based in Mesa, Ariz., that develops consumer products in collaboration with major league coaches and players.

◆ **Jason Farrell '98 B.A., '10 M.B.A.** accepted a media relations manager position with the Global Communications Group (GCG) at Intel Corporation. His responsibilities include developing and executing communication programs that support Intel's activities in perceptual computing, the "Maker" movement and other innovation-related programs.



Alan Bayless Feldman '98 J.D. was elected partner at Steptoe & Johnson LLP. He practices labor relations and employment law in the firm's Phoenix office.



◆ **Julie Maurer '98 M.P.A.,** an attorney with Jennings, Strouss and Salmon's commercial litigation group in Phoenix, received the Award of Professional Distinction from Missouri University of Science and Technology in recognition of her professional accomplishments. Maurer was appointed judge pro tempore for the Arizona Superior Court in Maricopa County in 2015.

Michael D. Hoerber '98 B.Mus., '00 M.M., a captain in the U.S. Air Force and commander of the USAF Heritage of America Band and USAF Heartland of America Band, discovered that fellow Sun Devil **Robert J. Coats '15 M.M.,** a lieutenant in the U. S. Navy and commander/director of the USN Fleet Forces Band, is stationed only 20 minutes away from him. Hoerber is stationed in Hampton, Va., and Coats is based in Norfolk, Va. Both alums studied under ASU's current director of bands, Professor Gary W. Hill.

Jennifer Russo '98 B.A. is general manager of communications for Rio Tinto, Copper & Coal, Americas, a Financial Times Stock Exchange 100 company.

Mary Denigan-Macauley '97 Ph.D., assistant director at the Government Accountability Office in Washington, D.C., received a Distinguished Alumni Award from the University of Delaware's College of Agriculture and Natural Resources in recognition of her career accomplishments, service and leadership to the profession, and her commitment to community service and to the University of Delaware.



Cindy Parnell '97 B.A.E. was promoted to executive director of ASU Career Services.

Eddie Coleman '95 B.S. announced his retirement as a major from the Army after 25 years of service. He received his commission as an officer from the Sun Devil Battalion.

Steve Strickbine '94 B.S., CEO of Times Media Group, announced that his company acquired the East Valley Tribune and Ahwatukee Foothills News. Strickbine oversees day-to-day operations of both publications.



◆ **Kristina Fredericksen '93 B.S., '10 M.P.A.** accepted a position as deputy director for the Arizona Medical Board and Arizona Regulatory Board of Physician Assistants.

Rick Noguchi '93 M.F.A. accepted a position as vice president of external relations for the Japanese American National Museum. He will manage the fundraising and development unit, oversee museum special events and oversee the marketing and communications unit for the museum.

Scott Sumners '93 B.S.P., '99 M.P.A. was promoted to principal at Rider Levett Bucknall's North American headquarters in Phoenix.

Tarence Wheeler '91 B.S., a former Sun Devil men's basketball player with experience in community relations and philanthropic activities, received the 2015 Director's Community Leadership Award from the FBI field office in Detroit for his efforts to help disadvantaged residents of that community through mentoring, outreach and philanthropy. He was recognized also at a ceremony in Washington, D.C.

1980s

◆ **Erik Maitland '88 B.S.** is chief meteorologist at KWQC-TV, the NBC affiliate in Davenport, Iowa.

◆ **Tom Awai '85 B.S.D., '93 M.E.P.** accepted a position as director of business development in the Los Angeles offices of RBB Architects Inc., a firm that specializes in healthcare architecture.

Nathan Kipnis '85 M.Arch., principal of Kipnis Architecture + Planning in Evanston, Ill., was elevated to fellow of the American Institute of Architects. His architectural firm specializes in High Design/Low Carbon™ projects, and Kipnis serves on both the Chicago and National AIA's 2030 Commitment Working Groups, whose goal is to have architects design carbon neutral buildings by 2030.



Timothy Salem '85 B.S. and Wendy Salem '86 B.A.E. moved to Pittsburgh, Pa., where Timothy will coach tight ends for the University of Pittsburgh football team. This year will mark 30 years of coaching NCAA Division I college football for Timothy.



◆ **Bonnie Gannon Ball '84 B.S.** was quoted in the dedication of the Gannon Stage at David Crockett Elementary School in Balsz School District in Phoenix. The stage was dedicated in memory of her parents, **John Gannon '55 B.A.E., '65 M.A.E.** and **Joan Gannon '65 B.A.E., '70 M.A.E.**, who were long-time educators in the area and who initiated three generations of ASU graduates.

◆ **Howard Sukenic '84 B.S.** was appointed judge on the Maricopa County Superior Court in Arizona by Gov. Doug Ducey on Sept. 29. He is assigned to the family court.



◆ **Todd Bankofier '82 B.S.**, formerly a principal in Fairmont Capital Group, accepted a position as chief executive officer of AudioEye.

Brenda Brown '82 B.A., City of Chandler cultural affairs director, was awarded the Arizona Library Association's (AzLA) Newton and Betty Rosenzweig Distinguished Service Award on Nov. 19, 2015, at the organization's annual conference. She received the award in recognition of her more than 25 years of passion and commitment to public service on behalf of Arizona libraries.

Tatiana Walsh '82 B.S., '01 M.B.A. accepted the position of governance, risk and compliance analyst at Western Alliance Bank. She recently obtained her doctorate in educational leadership from the University of Phoenix. An educator and corporate leader for more than 30 years, Walsh is a faculty member in the College of Information Systems and Technology and School of Business at the University of Phoenix. She serves also as adjunct faculty for the Department of Business and Administration at Northern Arizona University.



Rick Goodstein '81 M.M., '84 Ph.D., dean of the College of Architecture, Arts and Humanities at Clemson University and former director of the Clemson bands, met fellow Sun Devils **Mark Greer '81 B. Mus.** and Robert (Coach) Fleming, legendary director the Sun Devil Marching Band, at a Clemson band rehearsal before the 2015 National Football Championship game. Goodstein and Greer are former graduate assistants with the Sun Devil bands. Fleming was their mentor.



1970s

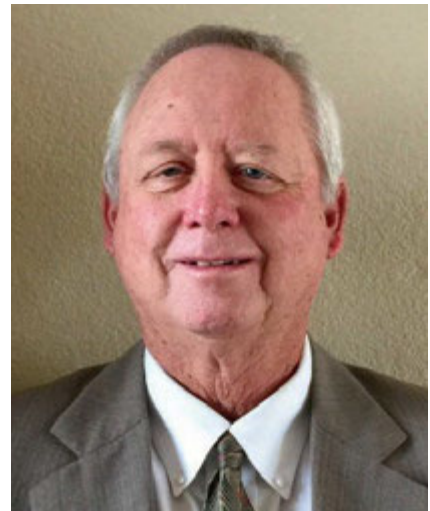
Bill Lavidge '78 B.S., '81 M.B.A. received the Spirit of Enterprise National Founder of the Year Award from the W. P. Carey School of Business in recognition of his efforts to positively impact the economy ethically and with energy and excellence in entrepreneurship.

◆ **Dennis Kavanaugh '78 J.D.**, the longest serving Mesa City Council member in the city's history, was named Mesa's 2015 Man of the Year. He has served four terms on the council.

Bill Moss '78 B.S., a certified public accountant and personal financial specialist, and Moss Booth Wealth Advisors joined TCI Wealth Advisors, Inc. in their Scottsdale, Ariz., office.

Nancy Riley '76 B.S. announced her retirement from Waddell & Reed Financial Advisors in Phoenix, where she served as administrative assistant to the regional vice president for 10 years. She is a U.S. Air Force veteran and a life member of Mortar Board.

David Mann '74 B.S. is the booker/promoter of the "Leave it to Beaver" Reunion Tour in 2016 that will play on many major college campuses. Original cast members Jerry Mathers (The Beaver), Tony Dow (Wally) and Ken Osmond (Eddie Haskell) will be featured in a Q&A, screen classic clips and sign autographs.



◆ **Paul McGinnis '74 B.S.**, who was inducted into the Arizona Golf Hall of Fame in 2004, received the Distinguished Service Award from the Golf Course Superintendents Association of America at their annual meeting in San Diego in February 2016.

Patricia Donahue '72 B.A.E., '77 M.S. retired as a legal office specialist from the Department of Economic and Social Services, Children's Services Division.

1960s



◆ **Rossi Ralenkotter '69 B.S.** is the president/CEO of the Las Vegas Convention and Visitors Authority. His successful efforts in marketing and branding of Las Vegas and Southern Nevada have received local and national awards.



Harvey Beller '60 B.A.E., president of Running Masters, was inducted into the Arizona Runners Hall of Fame on Nov. 1. He has been the executive race director of the Phoenix 10K since 1980.



◆ **Marshall Trimble '61 B.A.E., '63 M.A.E.** was selected by Gov. Doug Ducey for the Arizona State Historical Society board of directors and was then elected president by the board.

◆ Active, dues-paying member of the ASU Alumni Association

Submitting a class note to ASU Magazine

ASU Magazine welcomes Class Notes about significant milestones in the lives of ASU alumni. Here are a few guidelines for submission.

1. Class Notes should be submitted by the alumnus/a himself or herself, or an official representative of an organization with which the alumnus/a is associated.
2. Class Notes submitted by a private third-party (such as family member) will be verified with the alumnus/a before publication.
3. Photos submitted for inclusion in Class Notes must be 500 KB to 1 MB in file size and a JPG or TIFF file.
4. All Class Notes will run in all platforms for ASU Magazine – including the print magazine and our online/mobile applications.
5. If submitting a Class Note via the U.S. Post Office, please do not send the originals of any materials you include.

How to submit a Class Note

Email: alumni@asu.edu

Mail: ASU Alumni Association,
Attn: Class Notes,
P.O. Box 873702,
Tempe, AZ 85287-3702.



Designing the future

Lawrence "Larry" Enyart '72 B.Arch., '77 M.Arch.

Lawrence Enyart has dedicated his long architectural career to designing the future.

From his distinguished 35-year military career (retiring as a U.S. Air Force brigadier general), to mitigating damage left by Hurricane Georges in Mississippi in 1998, to serving as a pioneer in shaping the future of sustainable development, Enyart finds art in design.

It's that inherent skill that led Enyart to design more than 400 buildings throughout his career. Along the way, he built upon experiences from his military service and worked to make his structures more energy efficient. His firm, LEA Architects, LLC, is a recent American Institute of Architects (AIA) AZ Sustainable Firm of the Year.

"The fabric of my life is built on architecture and helping people," said Enyart, who graduated from Arizona State University with a bachelor's degree in architecture in 1972 and received a master's degree in the same program, with a special focus

sun devil births



Jonathan Krystof Niemann was born to Petra (Kalinske) Niemann '12 B.S. and Robert John Niemann on May 16, 2015.



Avery Noelle Haslag was born to Alicia Santiago-Haslag '11 B.A., '11 B.A. and Peter Haslag '10 B.S. on Dec. 28, 2015, in St. Louis, Mo.



Elena Nicole Velasquez was born to Nicholas Velasquez '08 B.I.S. and Mary Ann Velasquez in Gilbert, Ariz., on Dec. 31, 2015.



Hunter Elan Schiffman was born to ♦ Laurence Schiffman '06 B.S. and Stephanie Schiffman on Oct. 1, 2015 in Denver.



Sadie Faye Johnson was born to ♦ Shelly (Spencer) Johnson '04 B.S.D. and Tyler Johnson on July 25, 2015, in Charlotte, N.C.



Samuel Robert Bellows was born to Tiffany (Cawthron) Bellows '02 B.S., '06 M.B.A. and Ronald Bellows on Nov. 23, 2015.



Mason Allen Gervin was born to ♦ Matt Gervin '01 B.S. and ♦ Christine Gervin '05 B.S. on Nov. 25, 2015.

in solar technology, in 1977. “Architecture is the melding of art and science. When you’re sketching a building, you have to figure out what this building wants and needs to be.”

He continued, “When I entered grad school at ASU in the mid-70s, the ASU College of Architecture was clearly on the cutting edge with solar energy and thermal physics research, which was important to fuse those core design technologies and sustainable architecture.”

Enyart’s innovative touch has come to fruition time and again, earning him accolades in building design and energy. He received the AIA Western Mountain Region’s highest award, the Silver Medal, in 2011.

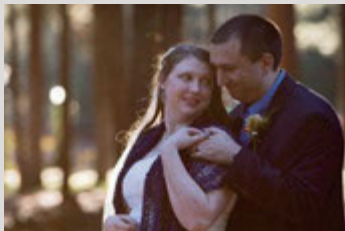
While the architect’s award-winning buildings can be seen throughout Arizona and the rest of the United States, it’s Sedona Fire District’s Station 6 – with a 9/11 memorial, angular roof, red masonry and solar panels – that holds special meaning for him. It received recognition from Arizona Forward with Crescordia Environmental Design awards and the Governor’s Award for Energy and Innovation in 2014.

After more than 40 years in the business, Enyart continues to see every future project as a way to seamlessly merge art with sustainable design. Perhaps that’s why when asked to choose his favorite building that he’s designed, Enyart responds: “The next one.”

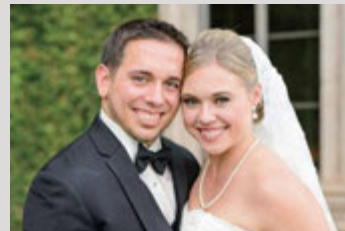
Nathan Gonzalez is a freelance writer based in Phoenix.



sun devil marriages



◆ **Abigail (Howman) Kirkland '14 B.A., '14 B.S., '14 B.S.** and **John Kirkland '05 B.A.** were married on Oct. 31, 2015, in Pinetop, Ariz.



◆ **Amanda Oppenheim '11 B.S.** and **Tanner Tegtmeier '12 B.S.** were married on Oct. 10, 2015 at Villa Siena in Gilbert, AZ.

◆ **Raegen Siegfried '09 M.B.A.** and ◆ **Amy (Buchan) Siegfried '03 B.A.** were married on Oct. 17, 2015, in Santa Barbara, Calif.

Jennifer Tolman '06 B.A. and **Jason Hurst** were married on Nov. 28, 2015, in the Pacific Palisades of Los Angeles.



Developing ASU's image

It's often an exaggeration to say one person has "seen it all" at a university, but it's likely that if "it" happened at Arizona State between 1954 and 1990, Charles "Chuck" Conley (pictured above, in a photo dated 1957) not only saw whatever it was, he took a photograph of it.

Conley was trained during his World War II-era military service as an aerial photographer and a pilot. He worked on staff as the official photographer from 1954 until 1960, when he opened his own photography studio. He continued to take photos on a regular basis for the university as a contractor; all told, more than 23,000 of Conley's photographs reside in the Charles Conley Photograph Collection at University Archives. Sun Devil Athletics houses additional photos of Conley's depicting sports events.

Conley's photos present many slices of life for Arizona State, which became a university during his time behind the lens. Everything from Sun Devil cheerleaders and chemistry awards to dances at the Memorial Union and candidates for Employee of the Year are chronicled in his collection.

To learn more about the Charles Conley Photograph Collection, visit <http://www.azarchivesonline.org>.

Photos courtesy of University Archives, Arizona State University Libraries.

The official currency of ASU®

Congratulations Sun Devil® fans! In only four years, you've helped generate more than \$1 million to support the university with the use of your MidFirst Bank ASU® Debit and Credit Cards!



Proud to be the exclusive banking partner of ASU.

602-801-5000 • midfirst.com/asumag

Member FDIC



ASU ALUMNI

ARIZONA STATE UNIVERSITY

PO Box 873702, Tempe, AZ 85287-3702



**you +
generosity
= impact**

You give. Lives change.

asu.edu/give

ASU Foundation
for A NEW AMERICAN UNIVERSITY

ARIZONA STATE UNIVERSITY